

Parts book

Product type
DLD-30 Serie 1



Den Hoek 10
5845 EL St. Anthonis
the Netherlands
Telephone +31 (0)485 442300
Fax +31 (0)485 442120

info@demarec.com
www.demarec.com



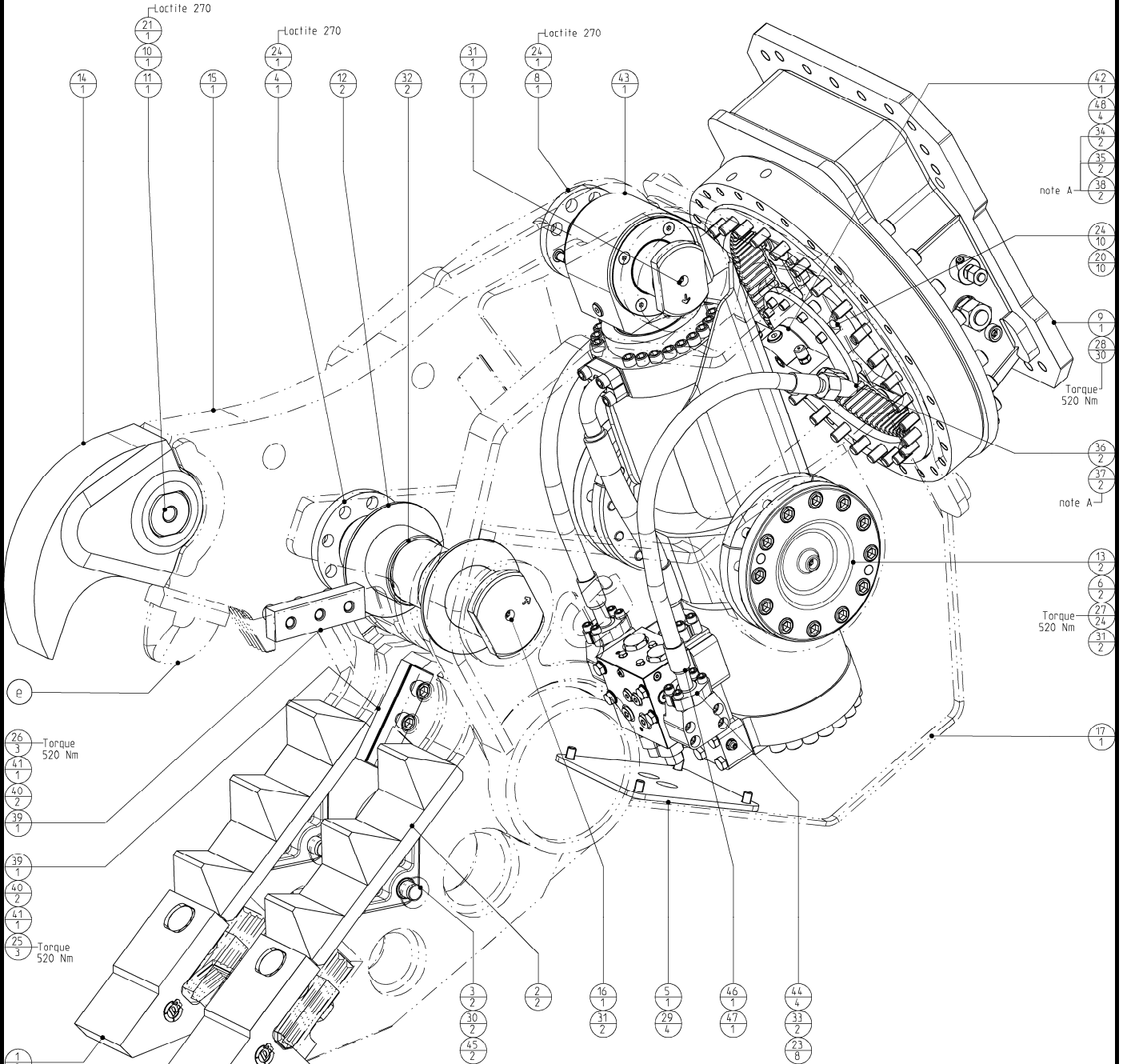
*Copyright Demolition and Recycling Equipment BV
All rights strictly reserved.
Reproductions to third parties in any form whatever is not permitted
without written authority from the proprietor*

Partsbook_404380-02.doc

Rotatable Demolition Shear

Housing GP

Page	1	of	17
Date	June 2010		
Product type	DLD-30		
Number	DLD30L075AAA5 404380-02		



Parts marked with a letter in column "Set" can be ordered as a set with Itemnumber

Set	Wearpartset	Itemnumber
a	Tripod shroud set	402820
b	Cuttingedges set	403654
c	Scraper teeth set	402818
d	Ripper-tooth set (excl. pin)	402842
e	Crusherblade (welded)	740058062

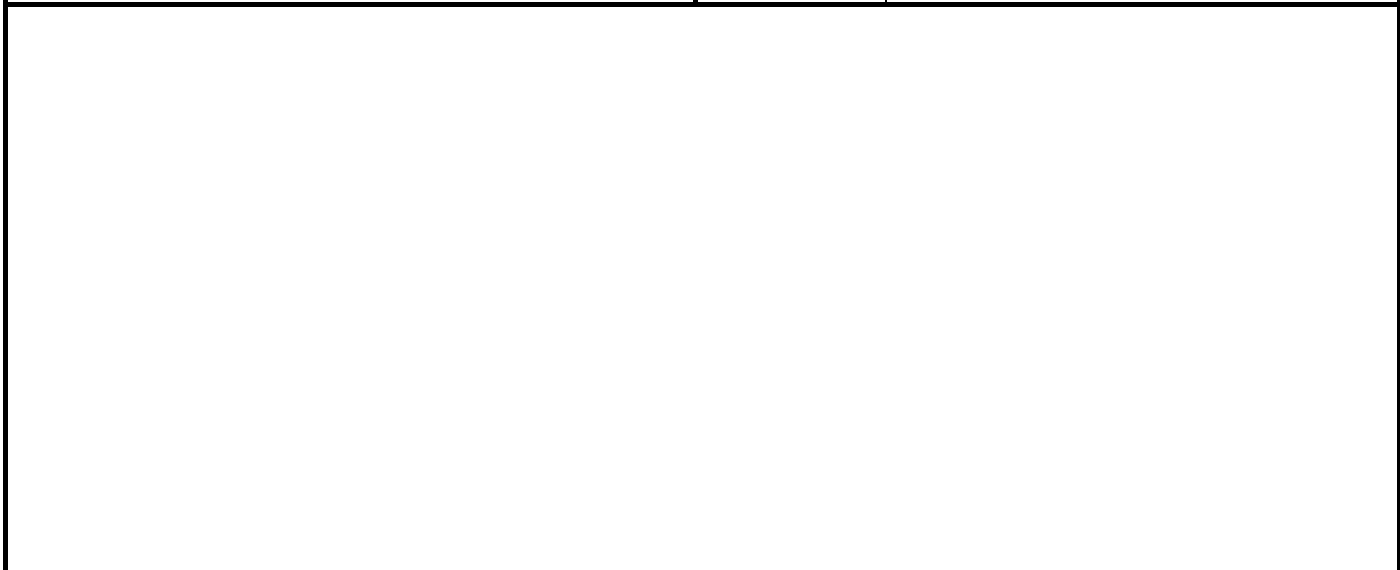
note A

- # Degrease threads with brake cleaner.
- # Rub in- and outside threads in with Cyberbound TT62 by using a brush.
- # Clean seal from plug during screwing in.
- # A drying time from the glue of at least 1 hour needs to be respected before if has any contact with oil.

Rotatable Demolition Shear

Housing GP

<i>Page</i>	2	<i>of</i>	17
<i>Date</i>	June 2010		
<i>Product type</i>	DLD-30		
<i>Number</i>	DLD30L075AAA5 404380-02		

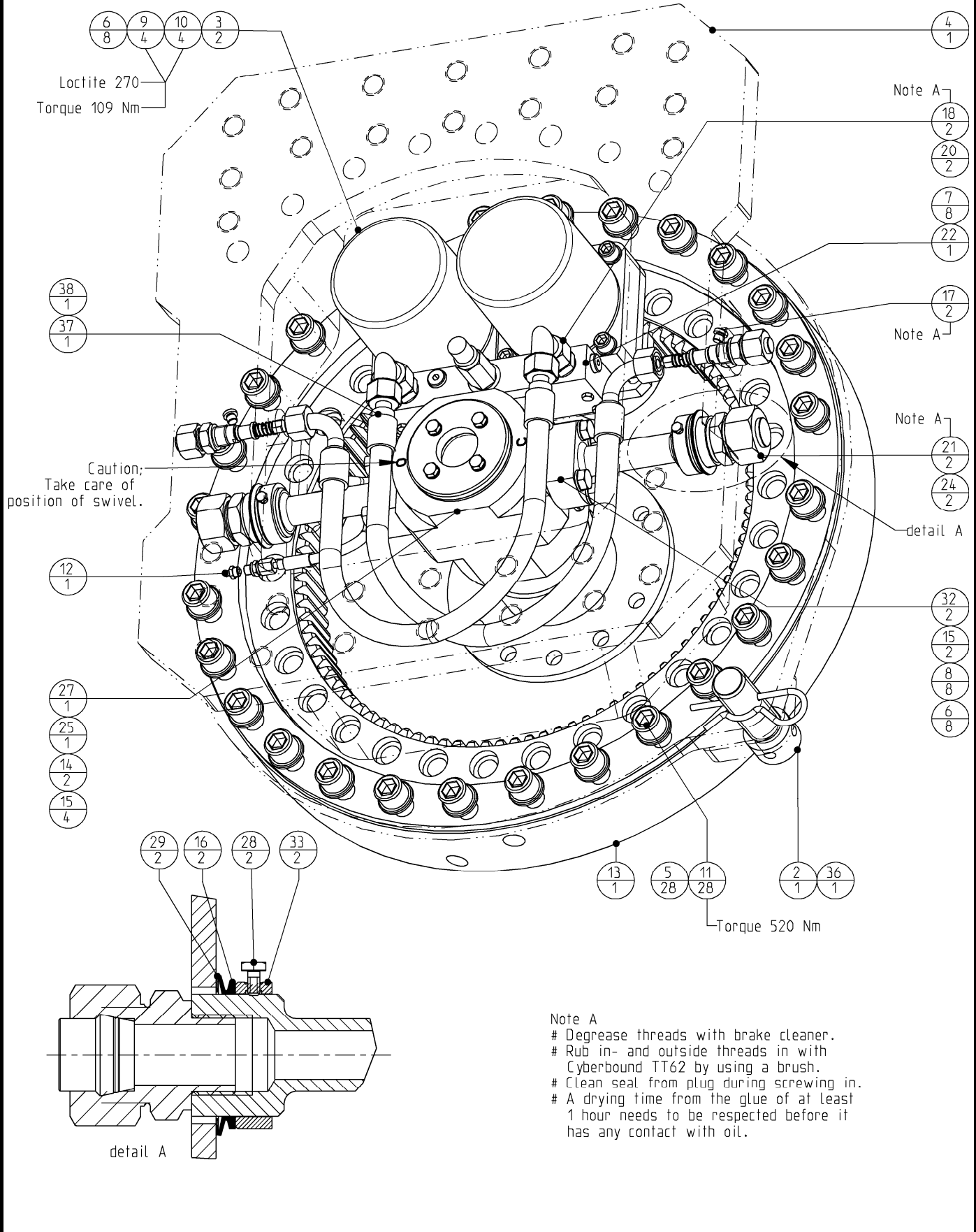


					b	25	500270	Hex. socket head cap screw	3
						24	500258	Hex. socket head cap screw	12
	48	506021	Hex. socket head cap screw	4		23	500250	Hex. socket head cap screw	8
	47	505044_VG08	Hydr. hose asm. 3/4" SAE 100R10	1	c	22	500201	Bolts Hexagon	2
	46	505044_VG07	Hydr. hose asm. 3/4" SAE 100R10	1	d	21	500144	Bolts Hexagon	1
a	45	504053	O-ring	2		20	500069	Washer spring	10
	44	503503	SAE split - flange	4	c	19	500058	Washer HV	2
	43	502705	Hydraulic Cylinder & Valve GP	1	c	18	500009	Nut Hexagon	2
	42	501035	Swivel - flange	1		17	404351	Housing asm. machined	1
h	41	500952	Shim - straight	2		16	404348	Pin	1
b	40	500951	Shim - straight	4		15	403815	Jaw - upper asm.	1
b	39	500950	Shear - blade straight	2	d	14	402922	Ripper - tooth	1
	38	500740	Test-point	2		13	402916	Bearing housing	2
	37	500695	Male stud coupling	2		12	402481	Spacer	2
	36	500675	Adjustable male stud elbow	2		11	402163	Lock - pin	1
	35	500653	Blanking end	2	d	10	401965	Lock - cover	1
	34	500652	Blanking end	2		9	401766	Rotatorhead GP	1
	33	500601	O-ring	2		8	401441	Locknut	1
	32	500572	Bushing	2		7	401440	Pin	1
	31	500560	Grease - nipple	5		6	401437	Ring	2
a	30	500559	Tension bush - outside	2		5	401416	Cover	1
	29	500358	Flat countersunk head cap screws	4		4	401313	Locknut	1
	28	500302	Hex. socket head cap screw	30	a	3	401311	Lock - pin	2
	27	500275	Hex. socket head cap screw	24	a	2	401194	Shroud - tripod	2
b	26	500272	Hex. socket head cap screw	3	c	1	401193	Tooth - scraper	2
					SET	POS	PARTNUMBER	PARTNAME	QT

Rotatable Demolition Shear

Page	3	of	17
Date	June 2010		
Product type	DLD-30		
Number	401766-10		

Rotatorhead GP



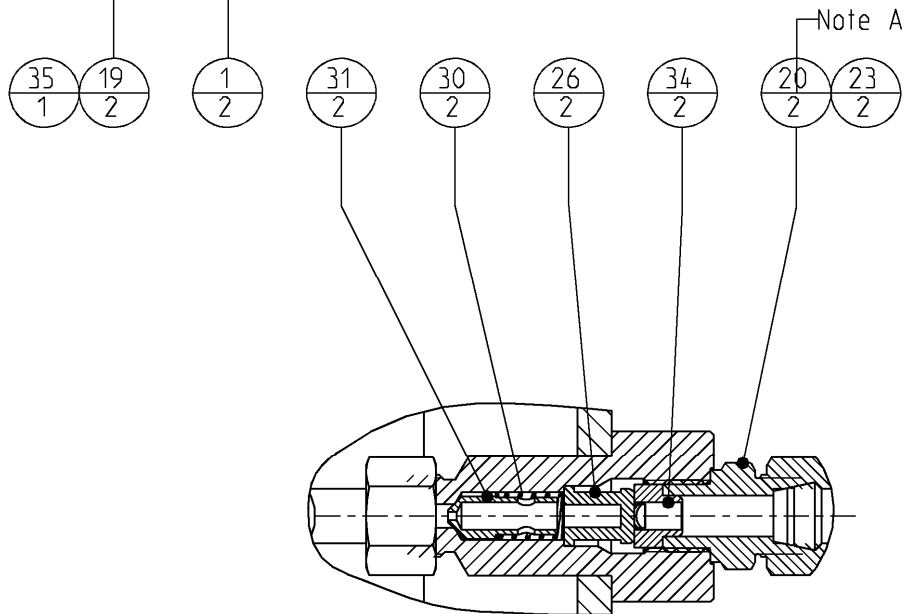
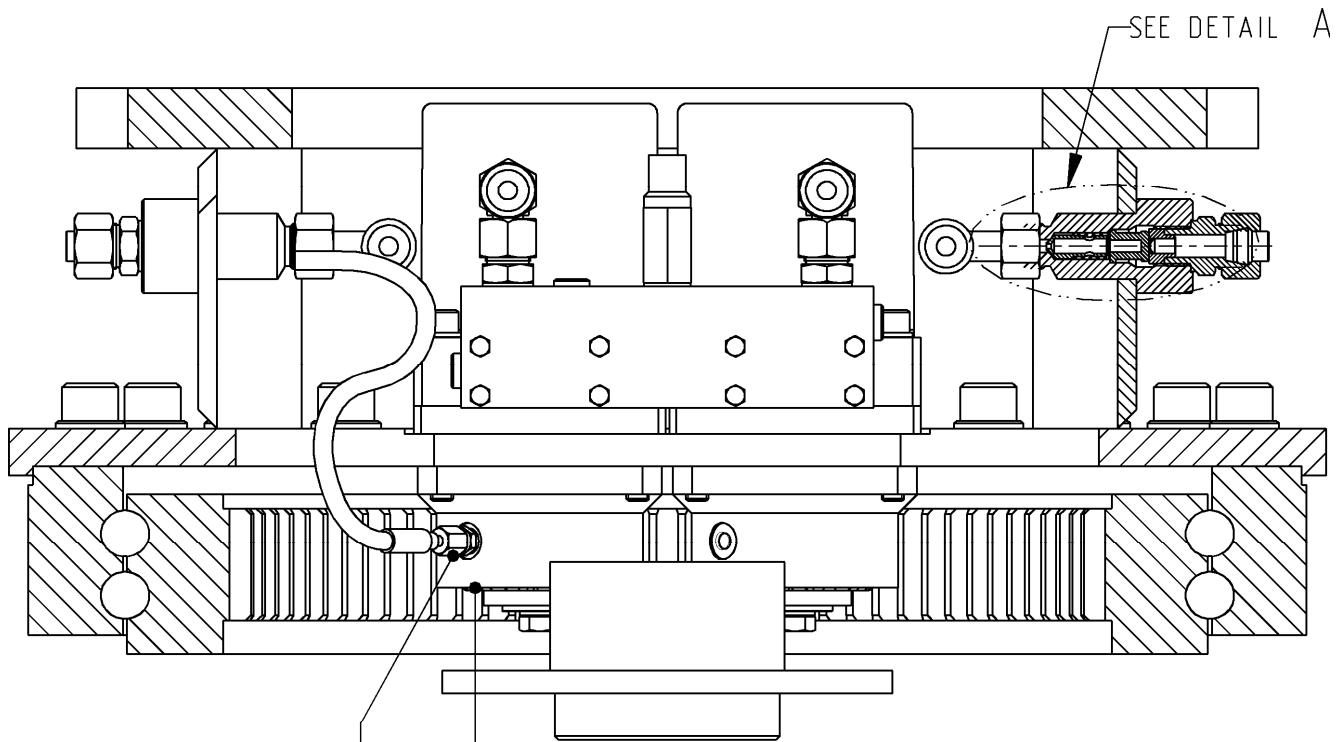
Note A

- # Degrease threads with brake cleaner.
- # Rub in- and outside threads in with Cyberbound TT62 by using a brush.
- # Clean seal from plug during screwing in.
- # A drying time from the glue of at least 1 hour needs to be respected before it has any contact with oil.

Rotatable Demolition Shear

Page	4	of	17
Date	June 2010		
Product type	DLD-30		
Number	401766-10		

Rotatorhead GP



DETAIL A

Note A

- # Degrease threads with brake cleaner.
- # Rub in- and outside threads in with Cyberbound TT62 by using a brush.
- # Clean seal from plug during screwing in.
- # A drying time from the glue of at least 1 hour needs to be respected before it has any contact with oil.

Rotatable Demolition Shear	Page	5	of	17
	Date	June 2010		
	Product type	DLD-30		
Rotatorhead GP	Number	401766-10		

--	--	--	--

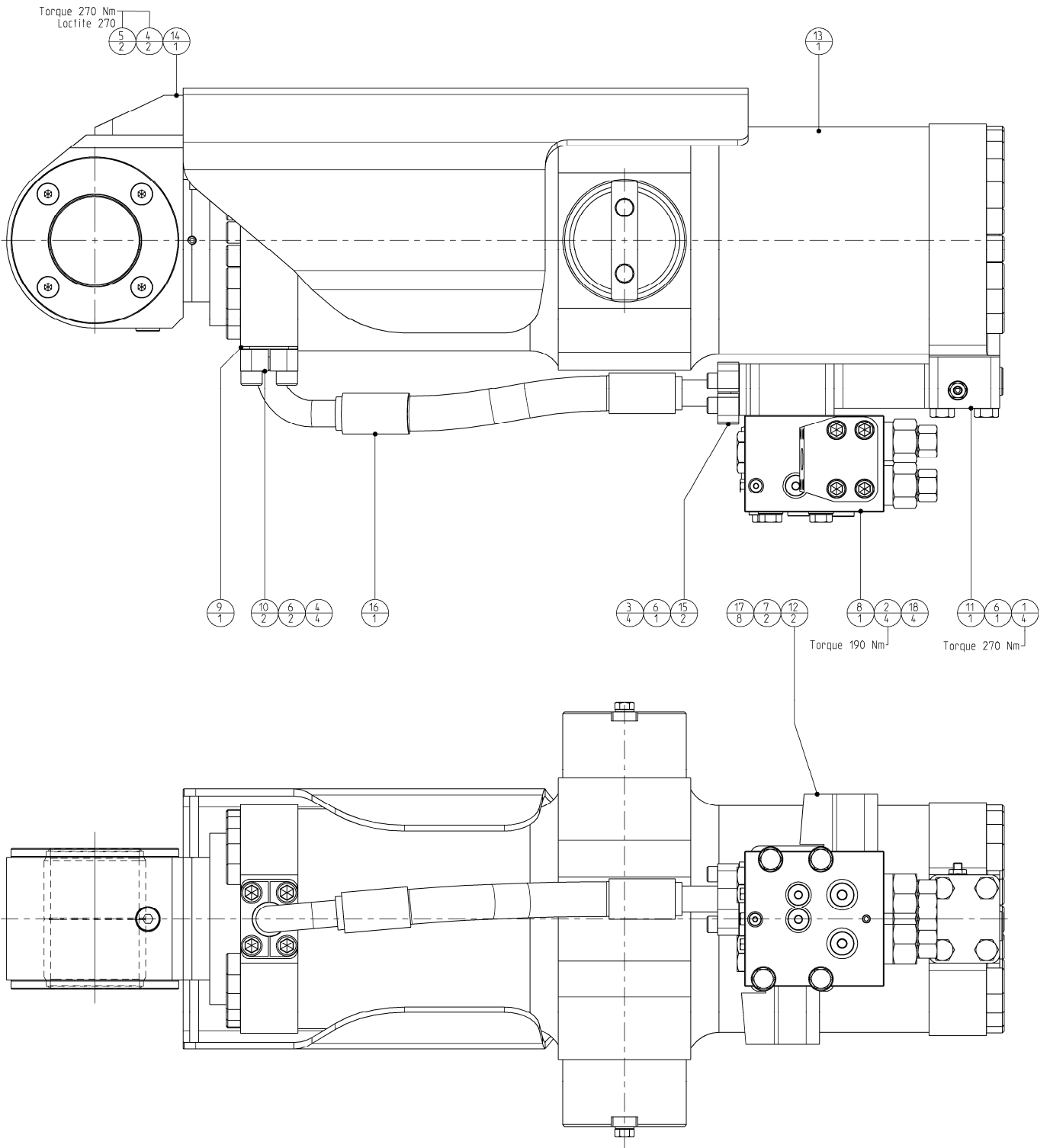
38	500840_VG02	Hydr. hose asm. 1/2" SAE 100 R2AT	1	19	500690	Male stud coupling	2
37	500840_VG01	Hydr. hose asm. 1/2" SAE 100 R2AT	1	18	500673	Adjustable male stud elbow	2
36	500504-3	Locking pin (hair-pin)	1	17	500649	Blanking end	2
35	296012429_VG01	Hydr. hose asm. 3/16" SAE 100R1AT	1	16	500621	Seal	2
34	773058645	Drossel - ring	2	15	500601	O-ring	6
33	773057512	Ring - adjusting	2	14	500600	O-ring	2
32	773056990	Hydraulic flange - pipe	2	13	500591	Stewing Ring; Internal Gear	1
31	273058601	Cone - valve + restriction	2	12	500560	Grease - nipple	1
30	165050749	Spring	2	11	500302	Hex. socket head cap screw	28
29	122010270	Ring - shim	2	10	500255	Hex. socket head cap screw	4
28	120014016	Bolts Hexagon	2	9	500253	Hex. socket head cap screw	4
27	502286	Swivel GP	1	8	500135	Bolts Hexagon	8
26	502000	Filter	2	7	500099	Bolts Hexagon	8
25	501074	Swivel - Flange Intermed.	1	6	500068	Washer spring	16
24	500948	Blanking plug	2	5	500055	Washer HV	28
23	500945	Blanking plug	2	4	401356	Rotatorhead asm. machined	1
22	500758	Valve GP	1	3	401201	Motor GP	2
21	500698	Male stud coupling	2	2	400066	Lock - pin	1
20	500693	Male stud coupling	4	1	400063	Cap - Pinion	2

POS	PARTNUMBER	PARTNAME	QT
-----	------------	----------	----

Rotatable Demolition Shear

Page	6	of	17
Date	June 2010		
Product type	DLD-30		
Number	502705-00		

Cylinder & Valve GP



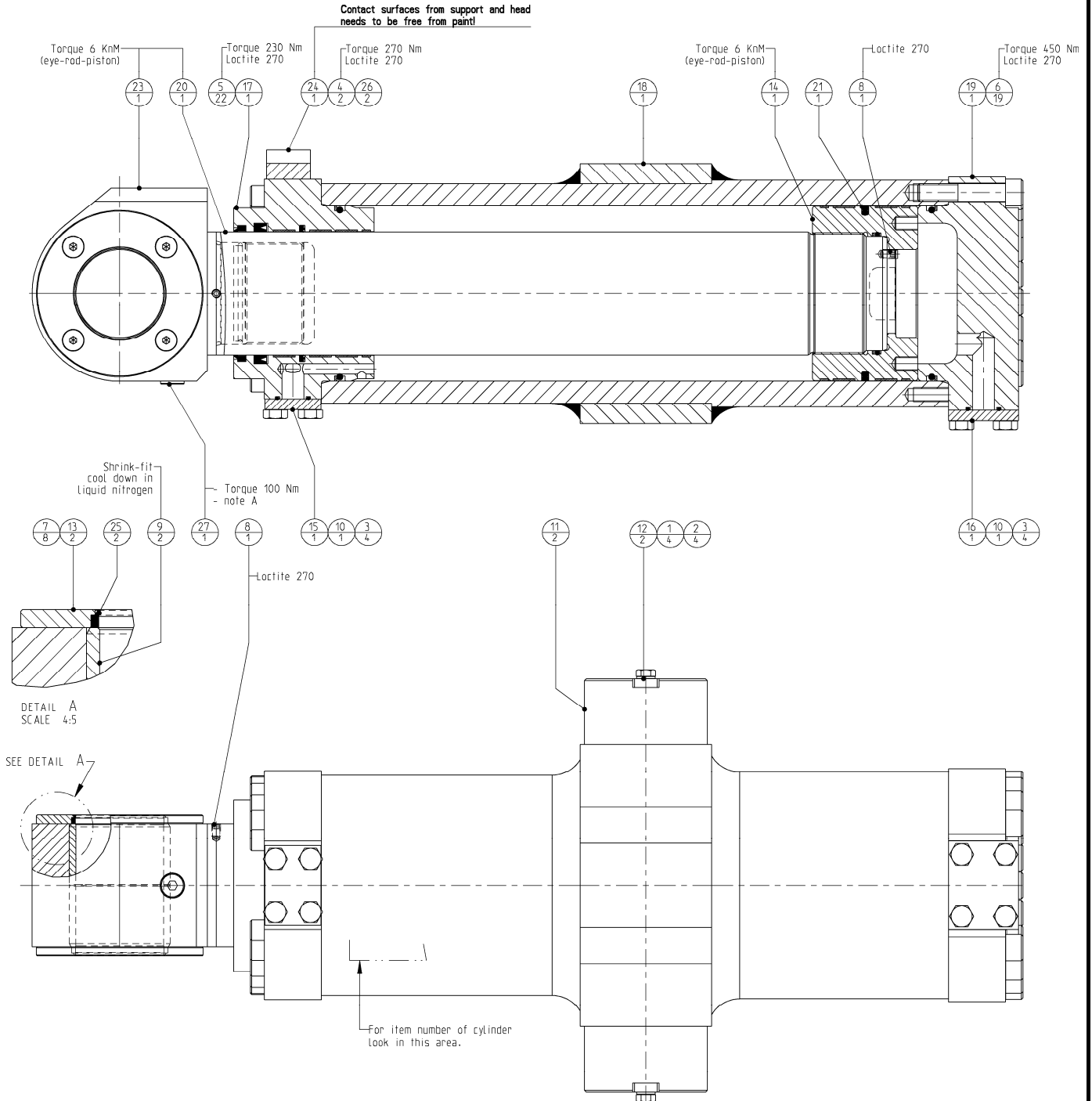
Rotatable Demolition Shear	<i>Page</i>	7	<i>of</i>	17
	<i>Date</i>	June 2010		
	<i>Product type</i>	DLD-30		
Cylinder & Valve GP	<i>Number</i>	502705-00		

18	122000163	Washer normal	4
17	120060526	Hex. socket head cap screw	8
16	505083_RM502705	Hydr. hose asm. 1" SAE 100R13	1
15	503503	SAE split - flange	2
14	502708	Protection cap asm.	1
13	502706	Hydraulic Cylinder GP	1
12	502561	Flange 95°	2
11	502559	Flange - bottom GP	1
10	502497	Split - flange spec.	2
9	502496	Flange - intermed.	1
8	500755	Overcentre valve	1
7	500603	O-ring	2
6	500601	O-ring	4
5	500265	Hex. socket head cap screw	2
4	500262	Hex. socket head cap screw	6
3	500250	Hex. socket head cap screw	4
2	500200	Bolts Hexagon	4
1	500149	Bolts Hexagon	4
POS	PARTNUMBER	PARTNAME	QT

Rotatable Demolition Shear

Cylinder GP

Page	8	of	17
Date	June 2010		
Product type	DLD-30		
Number	502706-00		



note A

- # Degrease threads with brake cleaner.
- # Rub in- and outside threads in with Cyberbound TT62 by using a brush.
- # Clean seal from plug during screwing in.
- # A drying time from the glue of at least 1 hour needs to be respected before if has any contact with oil.

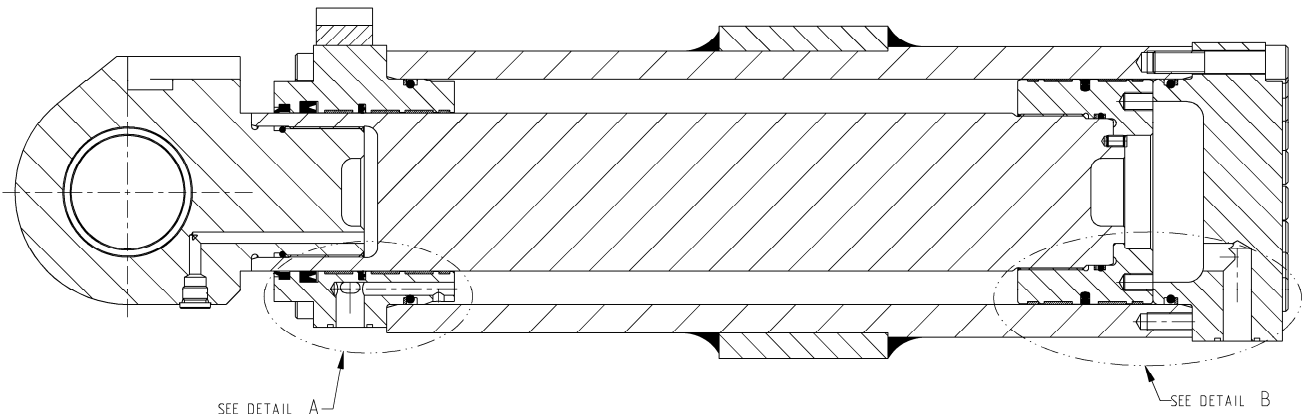
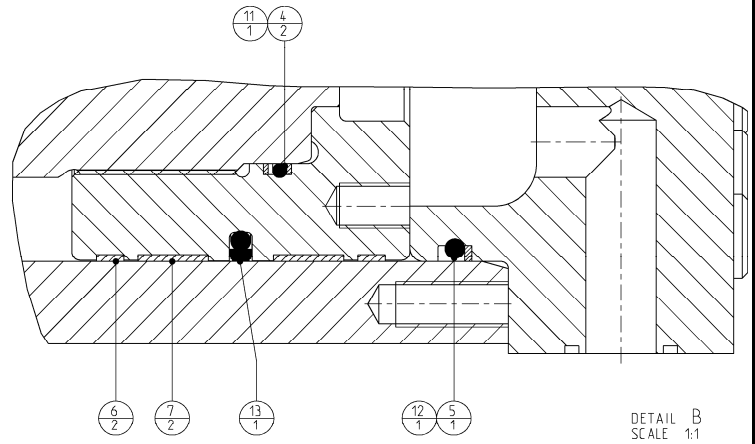
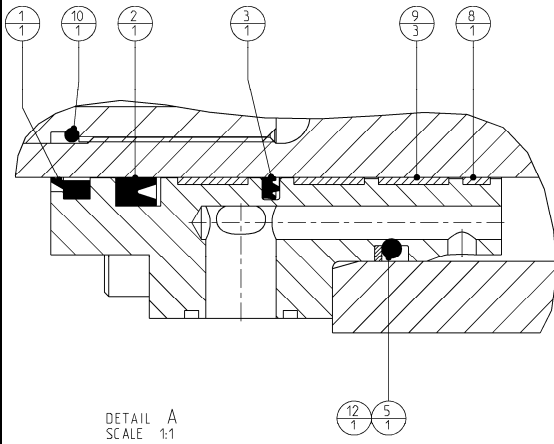
Rotatable Demolition Shear	<i>Page</i>	9	<i>of</i>	17
	<i>Date</i>	June 2010		
	<i>Product type</i>	DLD-30		
Cylinder GP	<i>Number</i>	502706-00		

27	290058184	Blanking end ISO 6149	1
26	506033	Lockwasher - Schnorr	2
25	504021	Scraper	2
24	502713	Support - protection cap	1
23	502707	Rod - eye	1
22	502706	Hydraulic Cylinder GP	1
21	502565_RM_502706	Seal - set	1
20	502556	Rod	1
19	502554	Cylinder - bottom	1
18	502552	Cylinder - house asm.	1
17	502333	Cylinder - head	1
16	502259	Blanking cover	1
15	502251	Blanking cover	1
14	502213	Piston	1
13	502127	Spacer	2
12	502050	Lockplate	2
11	502049	Bearing	2
10	500601	O-ring	2
9	500571	Bushing	2
8	500417	Hex. socket set screw	2
7	500347	Flat countersunk head cap screws	8
6	500277	Hex. socket head cap screw	19
5	500267	Hex. socket head cap screw	22
4	500260	Hex. socket head cap screw	2
3	500144	Bolts Hexagon	8
2	500133	Bolts Hexagon	4
1	500068	Washer spring	4
POS	PARTNUMBER	PARTNAME	QT

Rotatable Demolition Shear

Sealset

Page	10	Of	17
Date	June 2010		
Product type	DLD-30		
Number	502565-00		



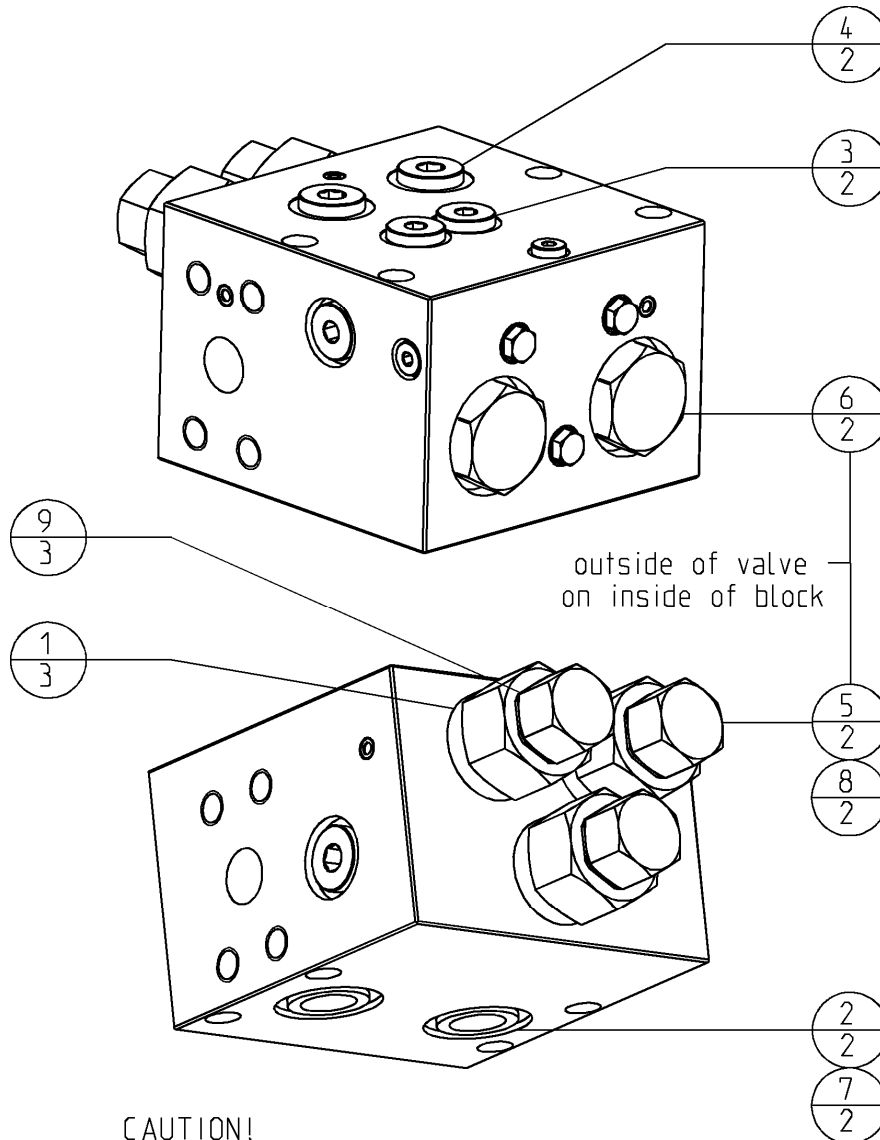
Rotatable Demolition Shear	<i>Page</i>	11	<i>of</i>	17
	<i>Date</i>	June 2010		
	<i>Product type</i>	DLD-30		
Sealset	<i>Number</i>	502565-00		

27	290058184	Blanking end ISO 6149	1
26	506033	Lockwasher - Schnorr	2
25	504021	Scraper	2
24	502713	Support - protection cap	1
23	502707	Rod - eye	1
22	502706	Hydraulic Cylinder GP	1
21	502565_RM_502706	Seal - set	1
20	502556	Rod	1
19	502554	Cylinder - bottom	1
18	502552	Cylinder - house asm.	1
17	502333	Cylinder - head	1
16	502259	Blanking cover	1
15	502251	Blanking cover	1
14	502213	Piston	1
13	502127	Spacer	2
12	502050	Lockplate	2
11	502049	Bearing	2
10	500601	O-ring	2
9	500571	Bushing	2
8	500417	Hex. socket set screw	2
7	500347	Flat countersunk head cap screws	8
6	500277	Hex. socket head cap screw	19
5	500267	Hex. socket head cap screw	22
4	500260	Hex. socket head cap screw	2
3	500144	Bolts Hexagon	8
2	500133	Bolts Hexagon	4
1	500068	Washer spring	4
POS	PARTNUMBER	PARTNAME	QT

Rotatable Demolition Shear

Page	12	of	17
Date	June 2010		
Product type	DLD-30		
Number	500755-03		

Overcentre valve



CAUTION!

Valve is equipped with high quality seals.
All valves and blanking ends are mounted according special instructions.

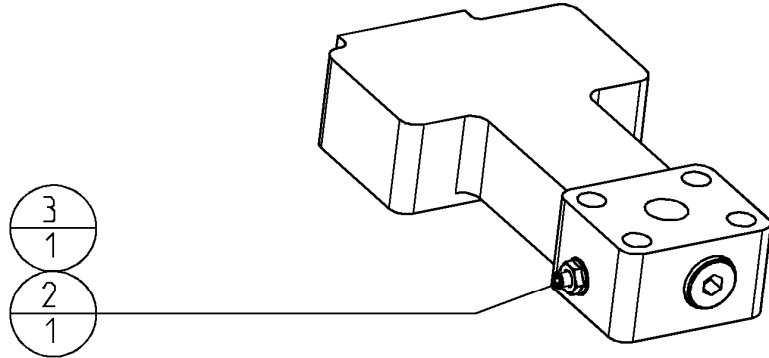
For further information contact your dealer.

9	504034	Bonded seal	3
8	n.a.	Back-up ring	2
7	504026	Back-up ring	2
6	n.a.	O-ring	2
5	n.a.	O-ring	2
4	504083	O-ring	2
3	504082	O-ring	2
2	504017	O-ring	2
1	500601	O-ring	3
POS	PARTNUMBER	PARTNAME	QT
sealset 504080-01			

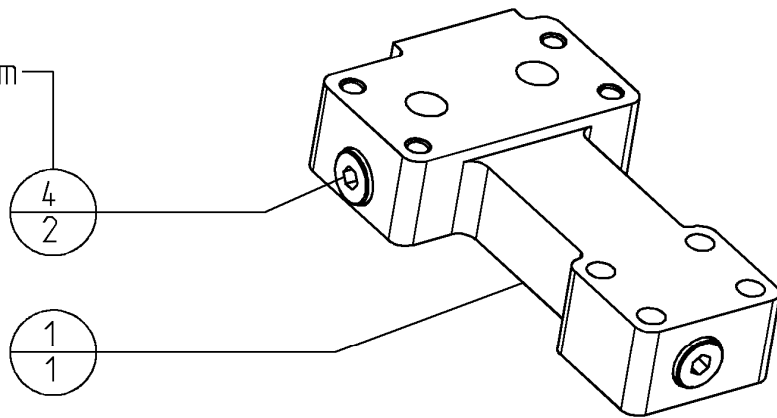
Rotatable Demolition Shear

Page	13	of	17
Date	June 2010		
Product type	DLD-30		
Number	502559-00		

Flange GP bottom



- Torque 150 Nm
- note A



note A

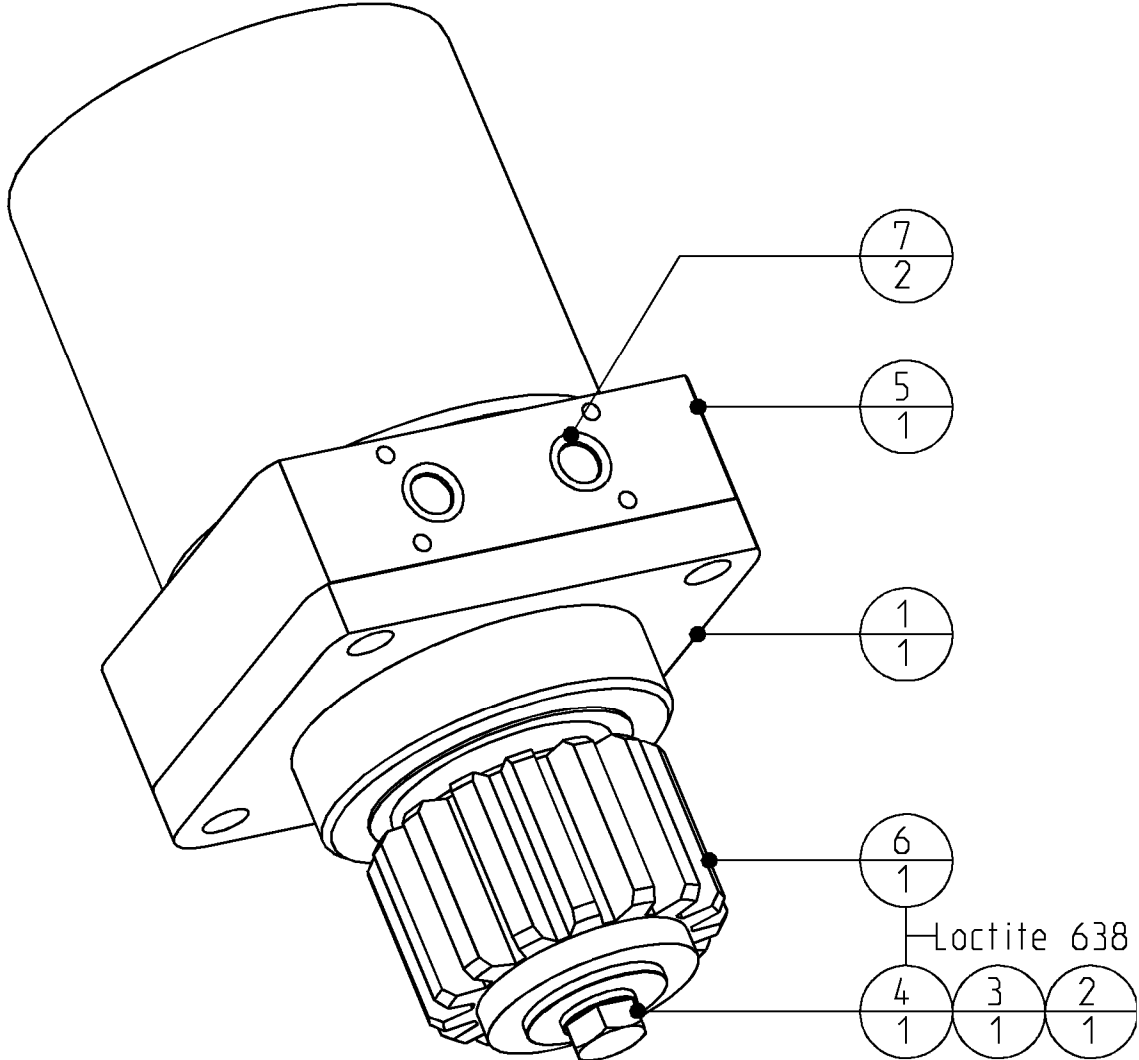
- # Degrease threads with brake cleaner.
- # Rub in- and outside threads in with Cyberbound TT62 by using a brush.
- # Clean seal from plug during screwing in.
- # A drying time from the glue of at least 1 hour needs to be respected before it has any contact with oil.

4	290058185	Blanking end ISO 6149	2
3	121060762	Nut Hexagon sealing	1
2	502562	Bleeding screw	1
1	502560	Flange - bottom	1
POS	PARTNUMBER	PARTNAME	QT

Rotatable Demolition Shear

Page	14	of	17
Date	June 2010		
Product type	DLD-30		
Number	401201-00		

Hydraulic motor GP



7	504070	O-ring	2
6	500851	Pinion	1
5	500763	Hydro-motor	1
4	500131	Bolts Hexagon	1
3	500068	Washer spring	1
2	500062	Washer car	1
1	400593	Motor-flange	1
POS	PARTNUMBER	PARTNAME	QT

Rotatable Demolition Shear

Page

15

of

17

Date

June 2010

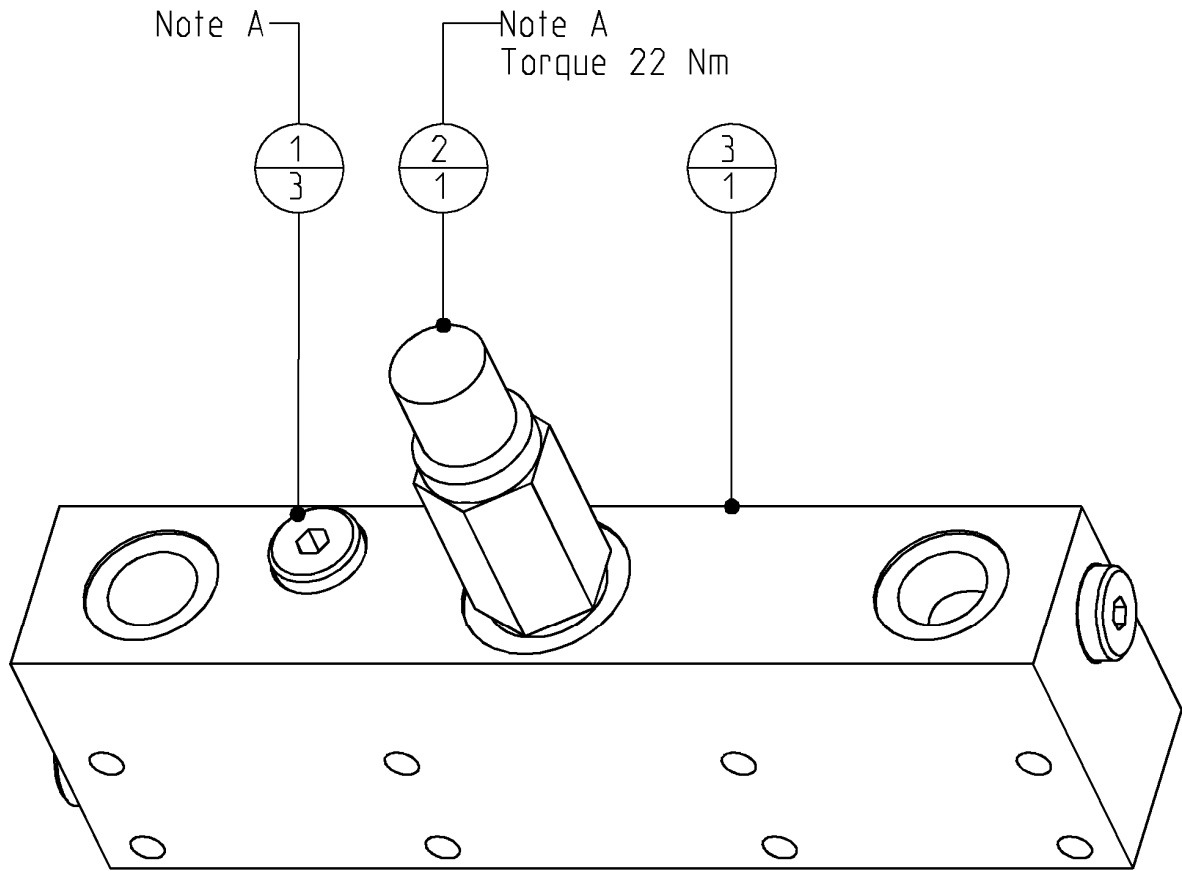
Product type

DLD-30

Valve GP

Number

500758-03



Note A

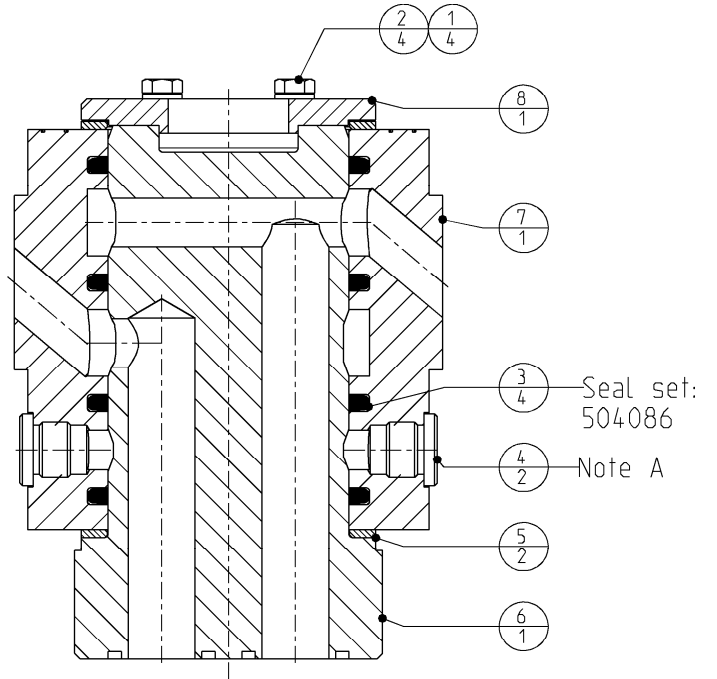
- # Degrease threads with brake cleaner.
- # Rub in- and outside threads in with Cyberbound TT62 by using a brush.
- # Clean seal from plug during screwing in.
- # A drying time from the glue of at least 1 hour needs to be respected before it has any contact with oil.

3	500759	Baseplate	1
2	500757	cross-over relieve valve	1
1	500650	Blanking end	3
POS	PARTNUMBER	PARTNAME	QT

Rotatable Demolition Shear

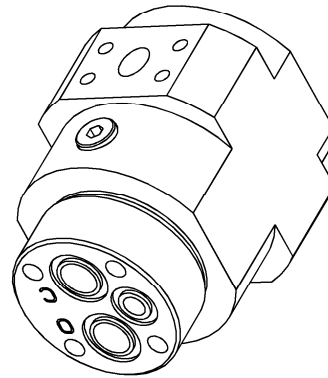
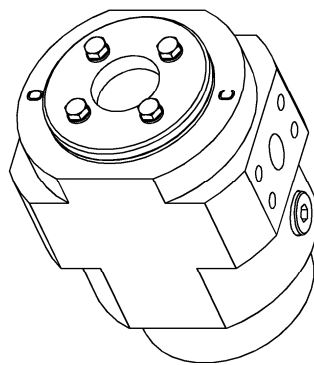
Page	16	of	17
Date	June 2010		
Product type	DLD-30		
Number	502286-02		

Swivel GP



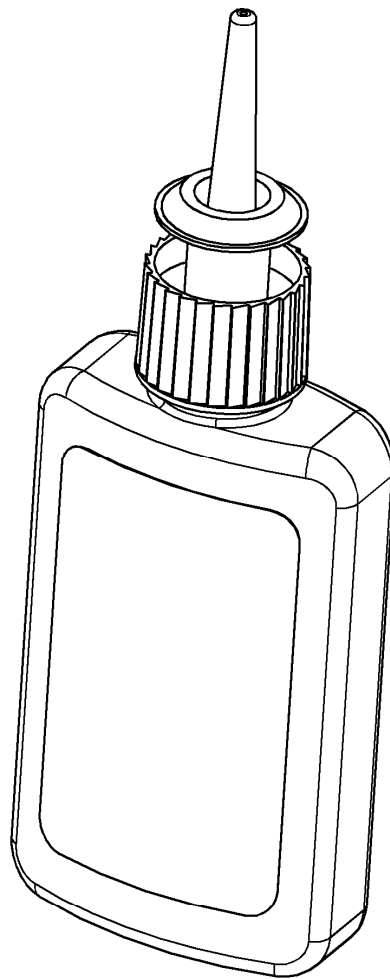
note A

- # Degrease threads with brake cleaner.
- # Rub in- and outside threads in with Cyberbound TT62 by using a brush.
- # Clean seal from plug during screwing in.
- # A drying time from the glue of at least 1 hour needs to be respected before if has any contact with oil.



8	502289	Cover	1
7	502288	Housing	1
6	502287	Stator	1
5	500832	Axial ring	2
4	500652	Blanking end	2
3	500630	Seal	4
2	500105	Bolts Hexagon	4
1	500066	Washer spring	4
POS	PARTNUMBER	PARTNAME	QT

Rotatable Demolition Shear	<i>Page</i>	17	<i>of</i>	17
	<i>Date</i>	June 2010		
	<i>Product type</i>	DLD-30		
Chemical lock	<i>Number</i>	n.a.		



195050158	Cyberbond TT62 Pumpgel	1
506017	Loctite 638 Flacon 50 ml	1
506016	Loctite 270 Flacon 50 ml	1
PARTNUMBER	PARTNAME	QT