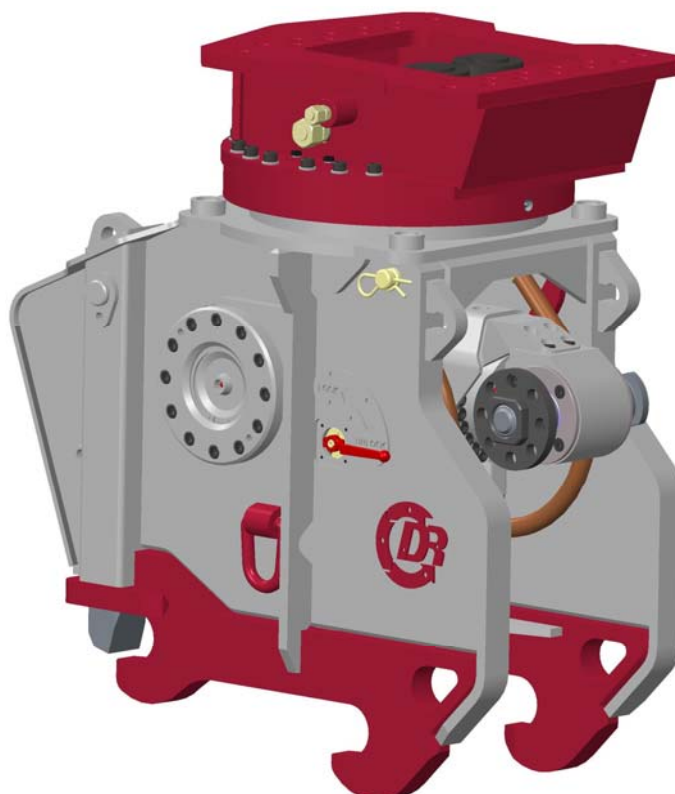




Partsbook
for
Multi Quick Processor
MQP-25-Y

Product	Part Number	Ref.
MQP-25-Y Serie 3	MQP25H000DAA5	



Partsbook_mqp25h000daa5-a.docx

August 2014

Demarec Demolition and Recycling Equipment BV

Den Hoek 10, 5845 EL St. Anthonis, Netherlands

TEL.
FAX

+31 (0) 485 442300
+31 (0) 485 442120

INTERNET
E-MAIL

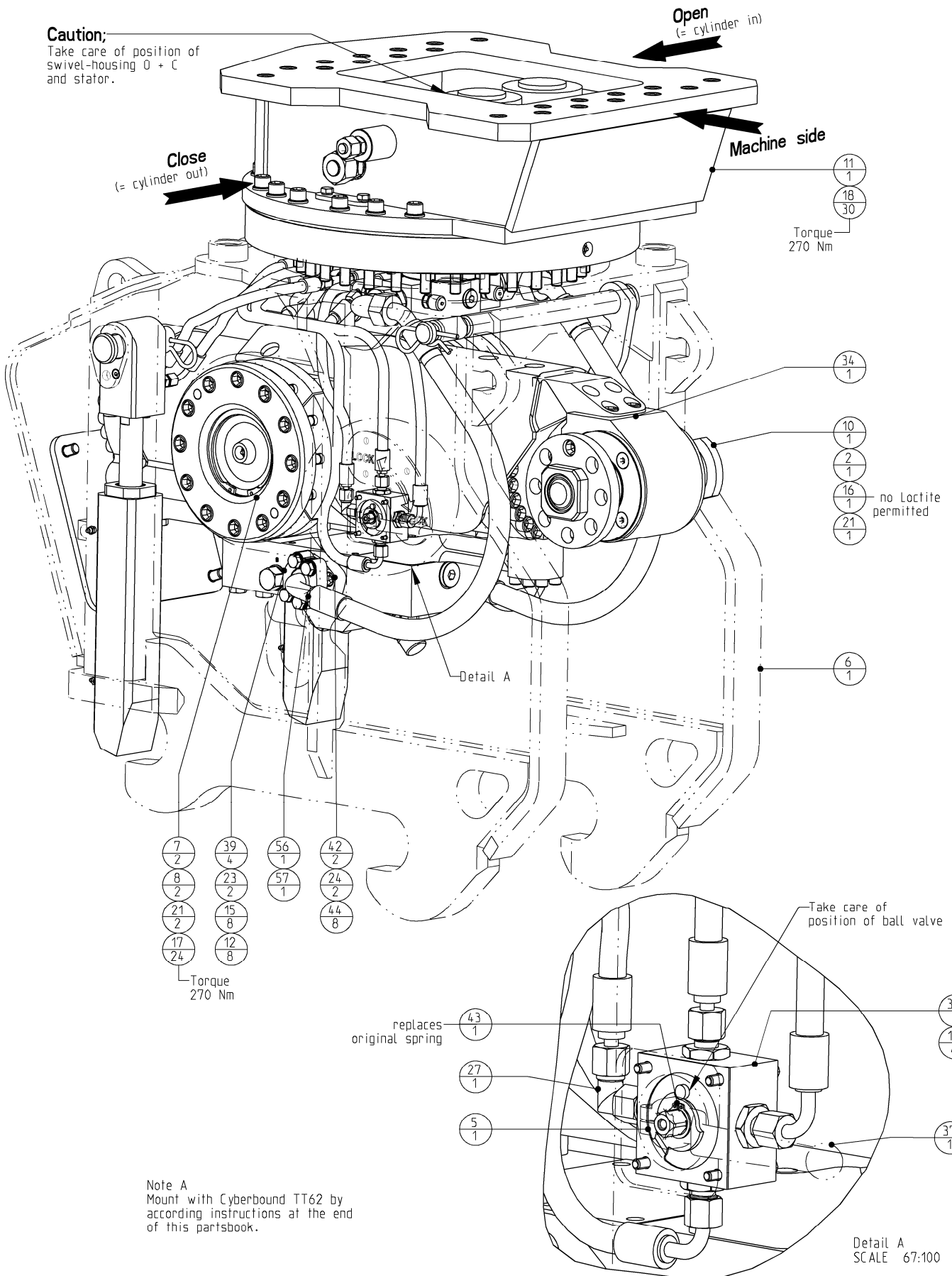
www.demarec.com
info@demarec.com

Multi Quick Processor

Page	1	of	25
Date	August 2014		
Product type	MQP-25-Y		
Number	MQP25H000DAA5-A		

Housing GP

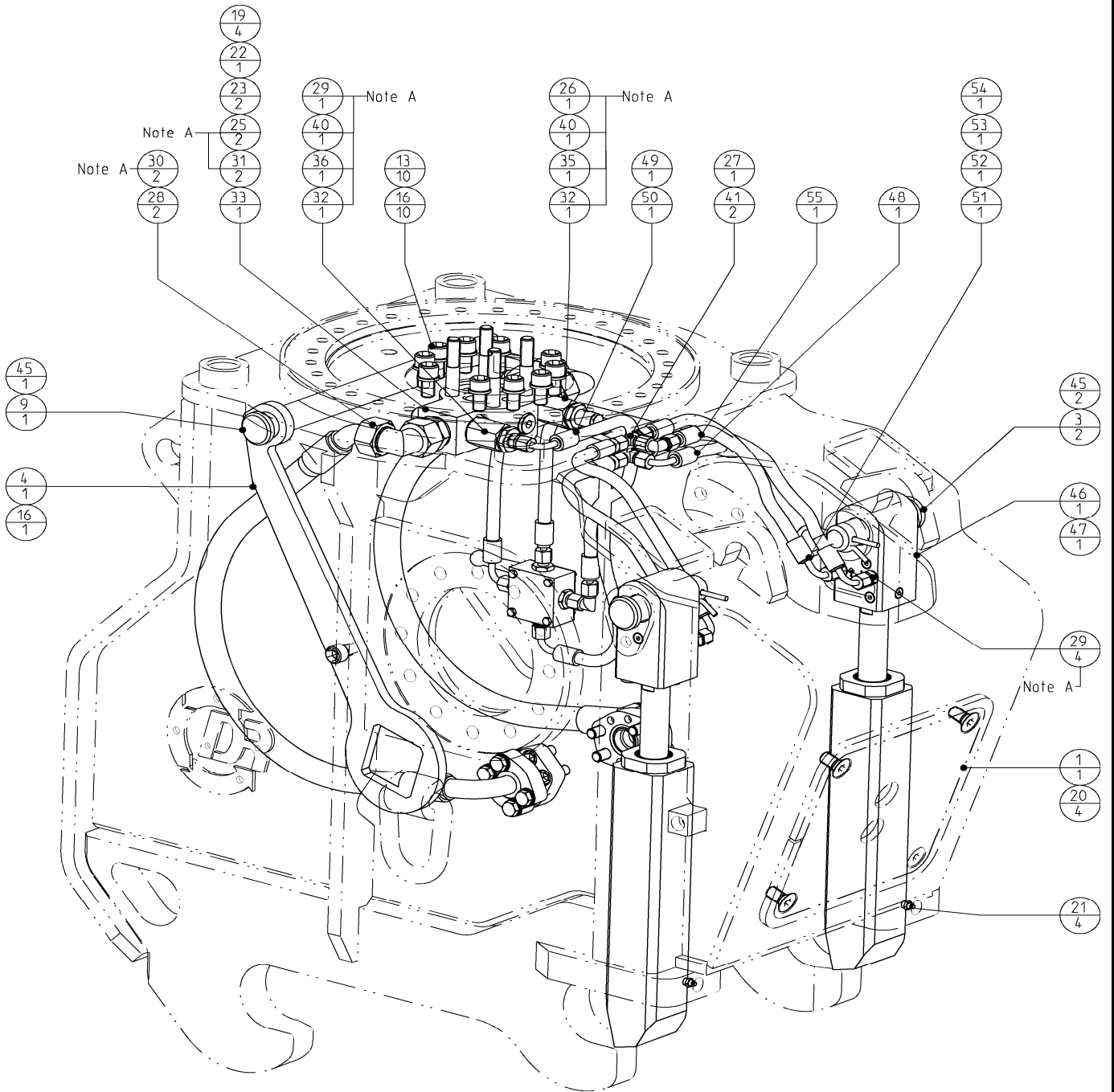
Caution;
Take care of position of swivel-housing O + C and stator.



Multi Quick Processor

Page	2	of	25
Date	August 2014		
Product type	MQP-25-Y		
Number	MQP25H000DAA5-A		

Housing GP



Multi Quick Processor	<i>Page</i>	3	<i>of</i>	25
	<i>Date</i>	August 2014		
	<i>Product type</i>	MQP-25-Y		
Housing GP	<i>Number</i>	MQP25H000DAA5-A		

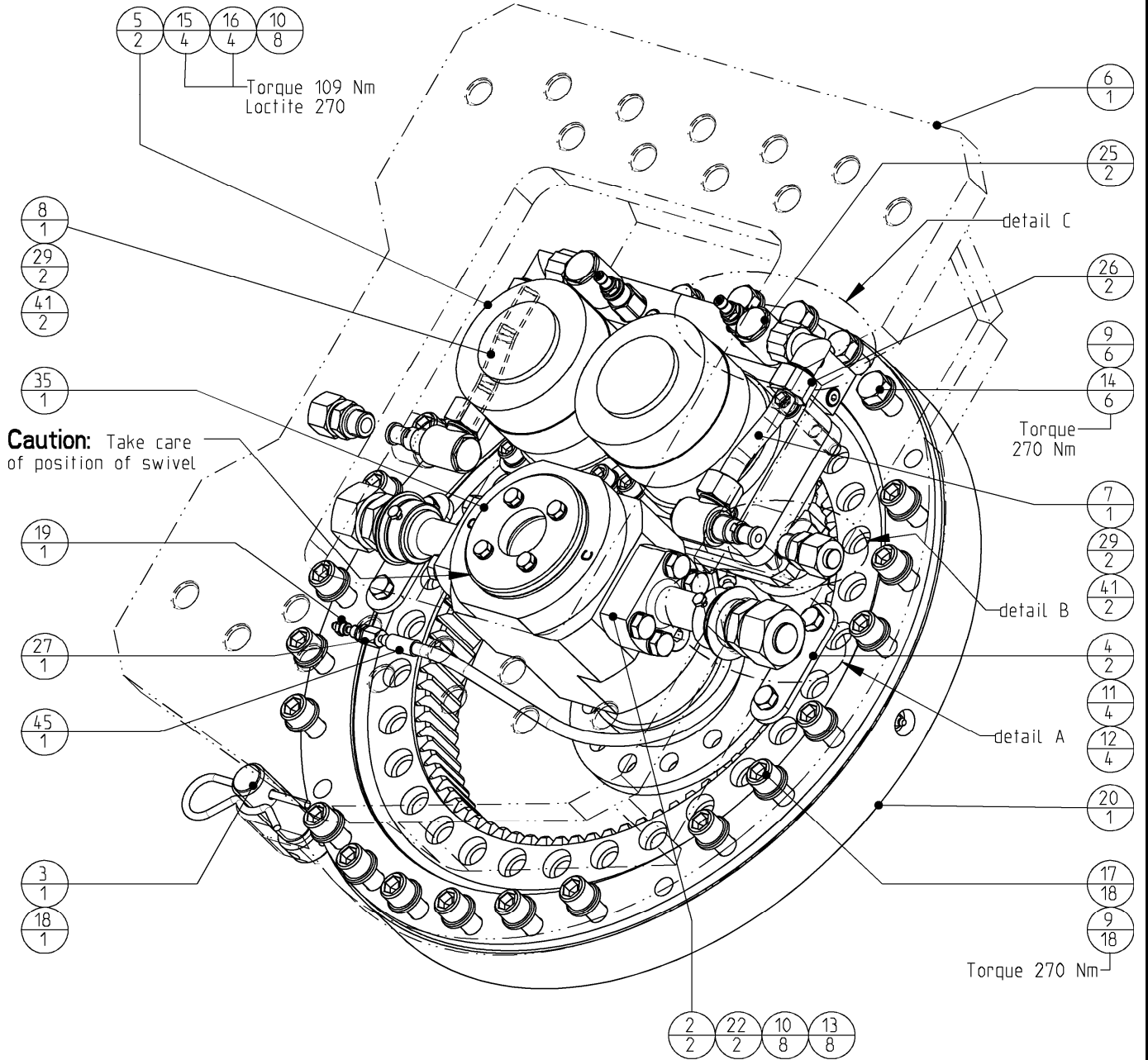
--	--	--	--	--	--	--	--	--	--

					30	500695	Male stud coupling		2
					29	500691	Male stud coupling		5
					28	500675	Adjustable male stud elbow		2
57	505151_RH_RM-MQP25	Hydr. hose RH asm. 3/4" SAE 100R10	1		27	500671	Adjustable male stud elbow		2
56	505151_LH_RM-MQP25	Hydr. hose RH asm. 3/4" SAE 100R10	1		26	500661	Banjo Coupling		1
55	505040_RM405280-1	Hydr. hose asm. 1/4" SAE 100R2AT	1		25	500652	Blanking end		2
54	505038_RM405280-4	Hydr. hose asm. 1/4" SAE 100R2AT	1		24	500603	O-ring		2
53	505038_RM405280-3	Hydr. hose asm. 1/4" SAE 100R2AT	1		23	500601	O-ring		4
52	505038_RM405280-2	Hydr. hose asm. 1/4" SAE 100R2AT	1		22	500600	O-ring		1
51	505038_RM405280-1	Hydr. hose asm. 1/4" SAE 100R2AT	1		21	500560	Grease - nipple		7
50	505012_RM405280-2	Hydr. hose asm. 1/4" SAE 100R2AT	1		20	500358	Flat countersunk head cap screws		4
49	505012_RM405280-1	Hydr. hose asm. 1/4" SAE 100R2AT	1		19	500268	Hex. socket head cap screw		4
48	505007_RM405280-1	Hydr. hose asm. 1/4" SAE 100R2AT	1		18	500266	Hex. socket head cap screw		30
47	502755_RH	Cylinder GP	1		17	500265	Hex. socket head cap screw		24
46	502755_LH	Cylinder GP	1		16	500258	Hex. socket head cap screw		12
45	500504-2	Locking pin (hair-pin)	3		15	500134	Bolts Hexagon		8
44	506051	Hex. socket head cap screw	8		14	500099	Bolts Hexagon		4
43	506020	Retainingring	1		13	500069	Washer spring		10
42	503649	SAE Reducer flange	2		12	500053	Washer HV		8
41	503556	Equal tee coupling	2		11	405155	Rotatorhead GP (DDL-MQP)		1
40	503510	Reducing adapter BSPP	2		10	402967	Pin		1
39	503503	SAE split - flange	4		9	402966	Lock - pin		1
38	502191	Ball - valve	1		8	402965	Ring		2
37	502136	Handle - bend	1		7	402962	Bearing - housing GP		2
36	502122	Non-return valve	1		6	402944	Housing asm. machined		1
35	502118	Non-return valve	1		5	402016	Lockplate		1
34	501270	Hydraulic Cylinder & Valve GP	1		4	401983	Key 80 square + eye		1
33	501073	Swivel - flange	1		3	401726	Pin		2
32	500741	Sleeve	2		2	401441	Locknut		1
31	500740	Test-point	2		1	401416	Cover		1
					POS	PARTNUMBER	PARTNAME		QT

Multi Quick Processor

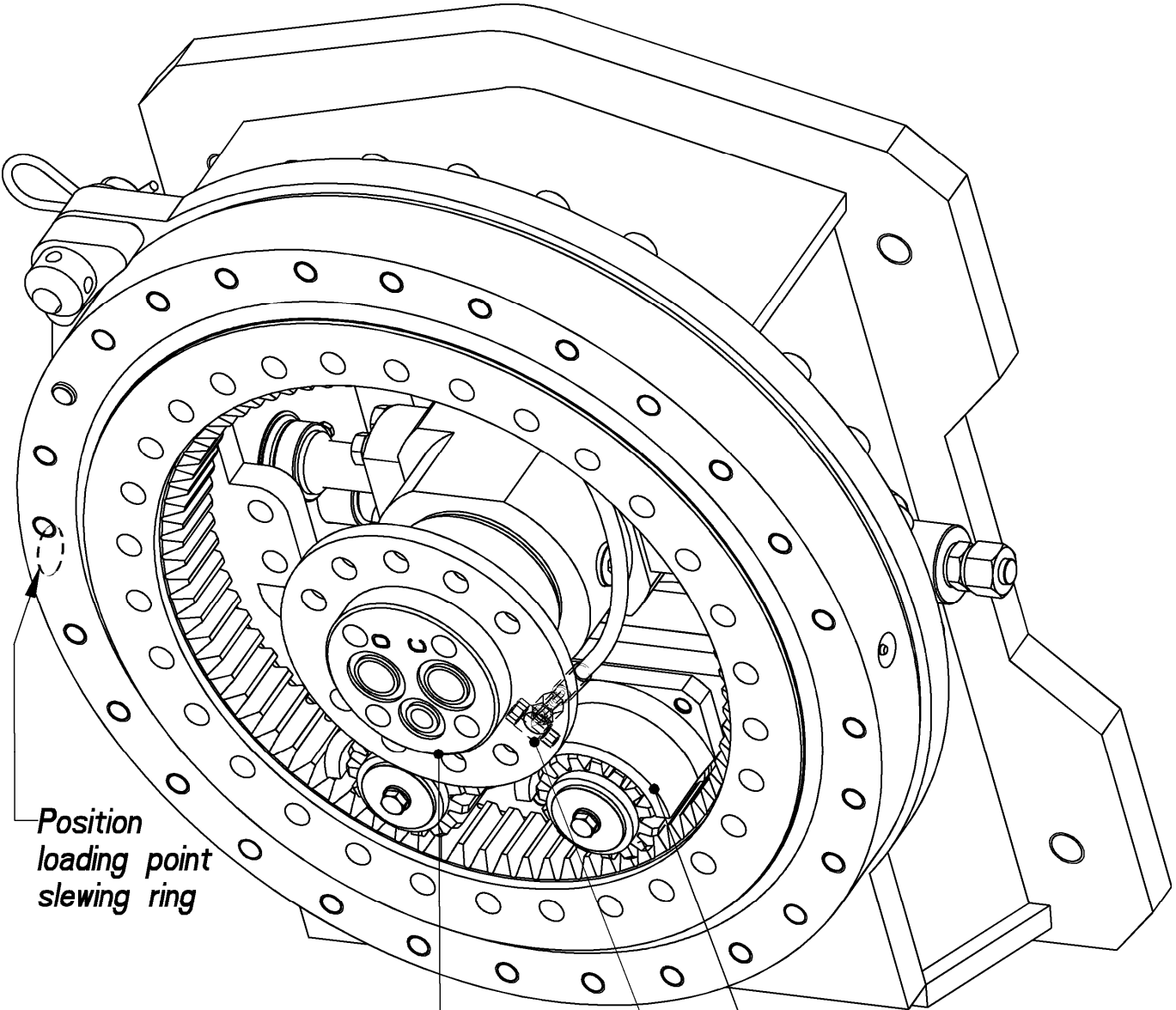
Page	4	of	25
Date	August 2014		
Product type	MQP-25-Y		
Number	405155-00		

Rotatorhead GP



Note A
 Mount with Cyberbound TT62
 according instructions at the end
 of this partsbook.

Multi Quick Processor	Page	5	of	25
	Date	August 2014		
	Product type	MQP-25-Y		
Rotatorhead GP	Number	405155-00		



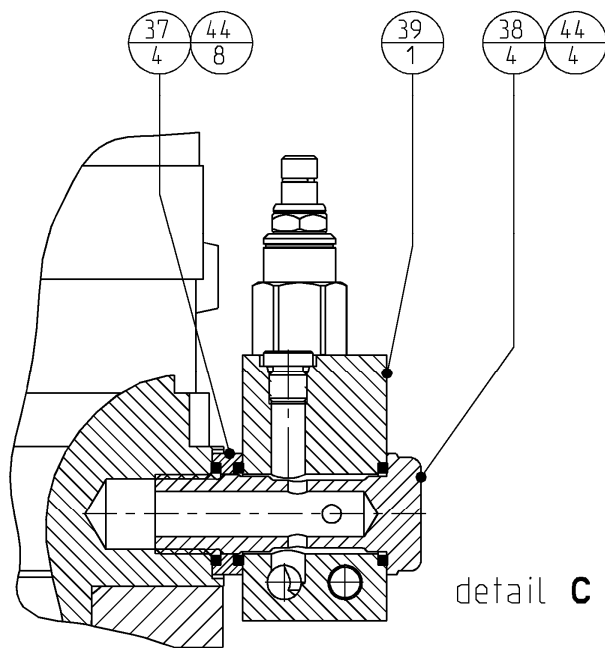
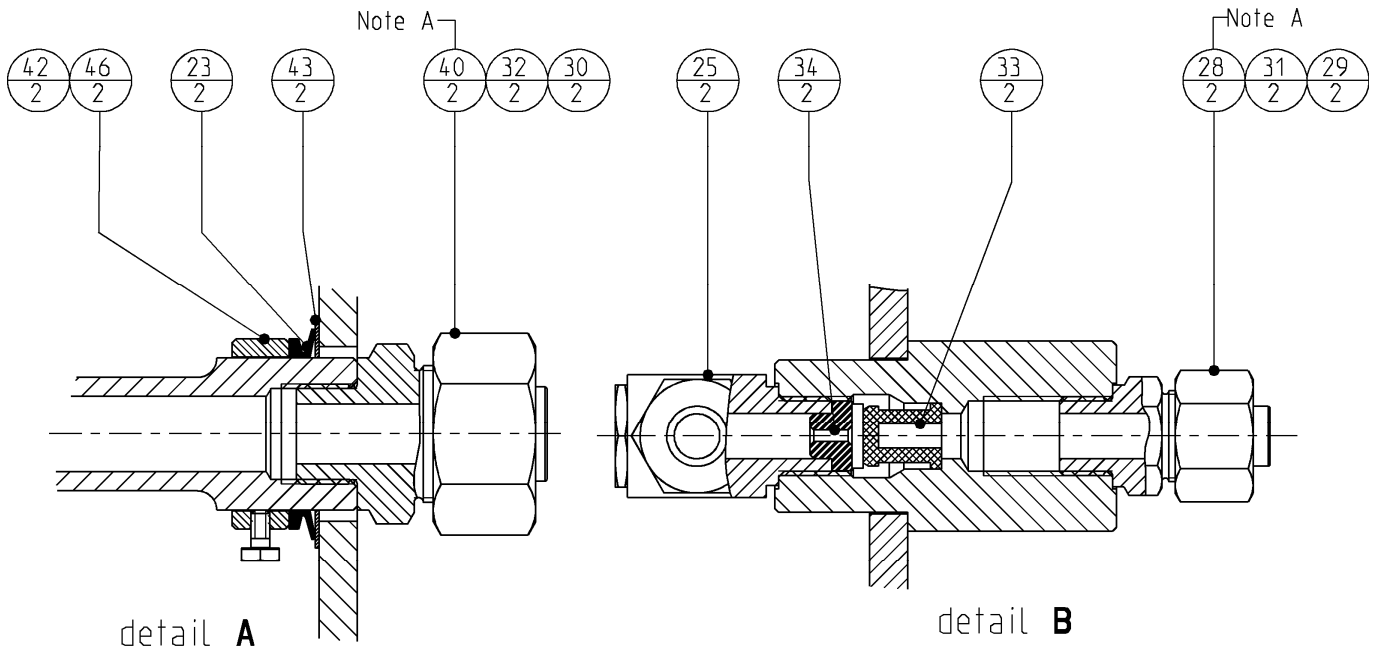
Position
loading point
slewing ring

- 36
1
- 21
1
- 22
2
- 24
1
- 1
2

Multi Quick Processor

Page	6	of	25
Date	August 2014		
Product type	MQP-25-Y		
Number	405155-00		

Rotatorhead GP



Multi Quick Processor	Page	7	of	25
	Date	August 2014		
	Product type	MQP-25-Y		
Rotatorhead GP	Number	405155-00		

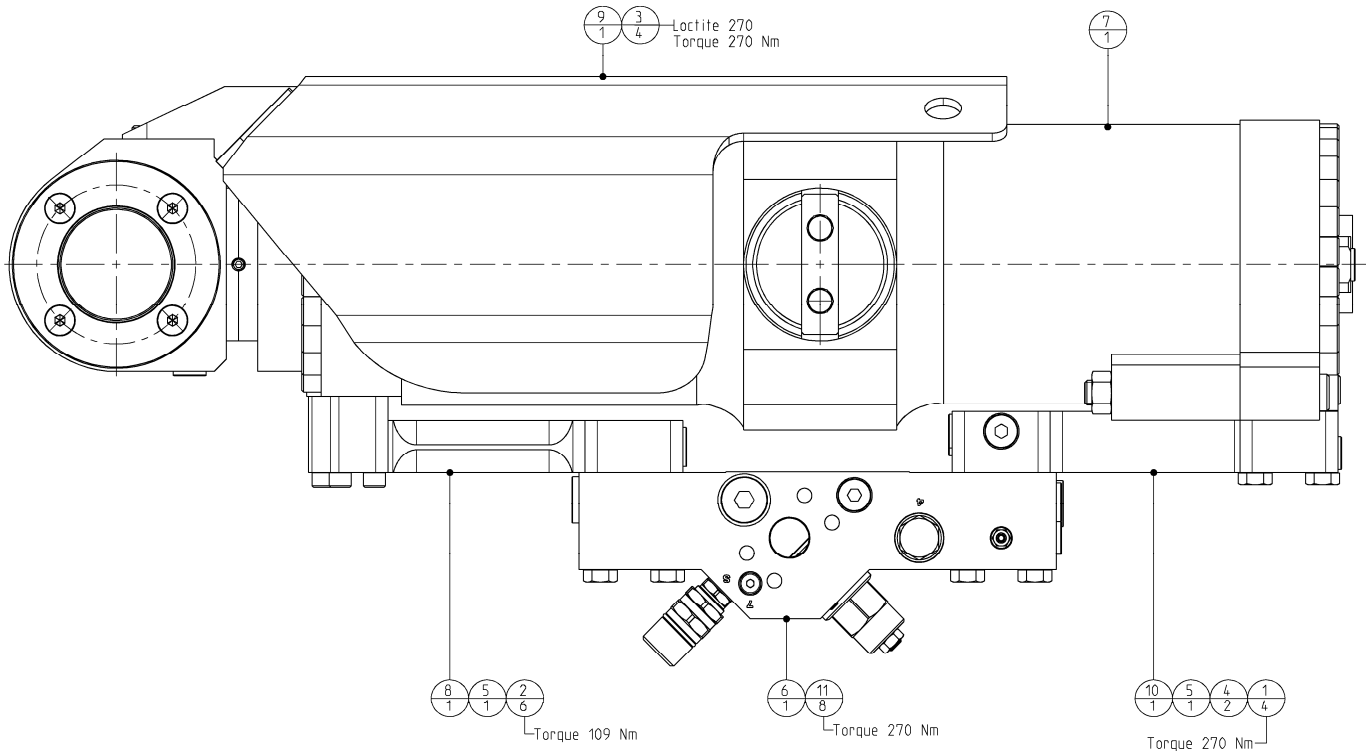
--	--	--	--	--

POS	PARTNUMBER	PARTNAME	QTY
25	500663	Banjo Coupling	4
24	500660	Banjo Coupling	1
23	500620	Seal	2
22	500601	Seal - flange	4
21	500600	Seal - flange	1
20	500590	Slewing Ring; Internal Gear	1
19	500560	Grease - nipple	1
18	500504-2	Locking pin (hair-pin)	1
17	500266	Hex. socket head cap screw	18
16	500255	Hex. socket head cap screw	4
15	500253	Hex. socket head cap screw	4
14	500150	Bolts Hexagon	6
13	500135	Bolts Hexagon	8
12	500116	Bolts Hexagon	4
11	500076	Washer spring	4
10	500068	Washer spring	16
9	500054	Washer HV	24
8	405166	Hydraulic tube RH	1
7	405165	Hydraulic tube LH	1
6	405156	Rotatorhead asm. machined	1
5	404727	Motor GP	2
4	402980	Cover	2
3	400217	Lock-pin	1
2	400214	Hydraulic flange - pipe	2
1	400063	Cap - Pinion	2
46	773058356	Ring - adjusting	2
45	296012594_VG04	Hydr. hose asm. 3/16" SAE 100R1AT	1
44	257066194	Kantseal	12
43	170058298	Ring - shim	2
42	120014016	Bolts Hexagon	2
41	503576	Ring - profile	4
40	503536	Male stud coupling	2
39	502910	Valve GP	1
38	502907	Banjo bolt	4
37	502903	Spacer	4
36	502330	Flange	1
35	502286	Swivel GP	1
34	502001	Drossel - ring	2
33	502000	Filter	2
32	500947	Blanking plug	2
31	500945	Blanking plug	2
30	500942	Nut coupling	2
29	500940	Nut coupling	6
28	500693	Male stud coupling	2
27	500690	Male stud coupling	1
26	500673	Adjustable male stud elbow	2

Multi Quick Processor

Page	8	of	25
Date	August 2014		
Product type	MQP-25-Y		
Number	501270-00		

Cylinder & Valve GP

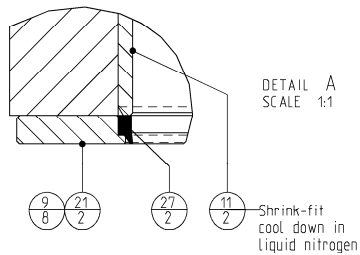
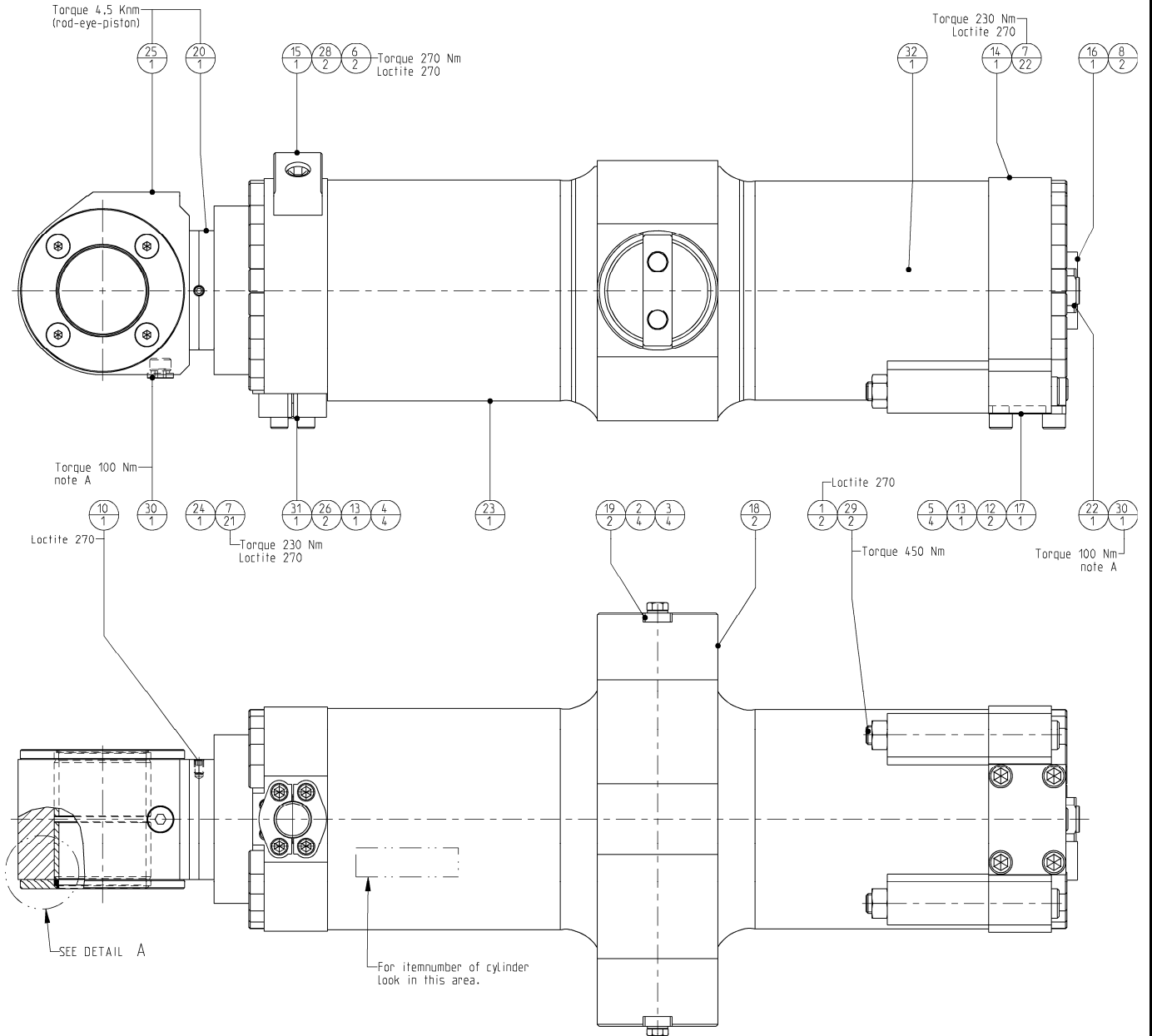


11	120013886	Bolts Hexagon	8
10	502686	Flange - bottom GP	1
9	501279	Protection cap asm.	1
8	501276	Flange - rod GP	1
7	501271	Hydraulic Cylinder GP	1
6	501240	Valve GP	1
5	500601	O-ring	2
4	500600	O-ring	2
3	500261	Hex. socket head cap screw	4
2	500254	Hex. socket head cap screw	6
1	500149	Bolts Hexagon	4
POS	PARTNUMBER	PARTNAME	QT

Multi Quick Processor

Page	9	of	25
Date	August 2014		
Product type	MQP-25-Y		
Number	501271-00		

Cylinder GP



note A
Mount with Cyberbound TT62
according instructions at the end
of this partsbook.

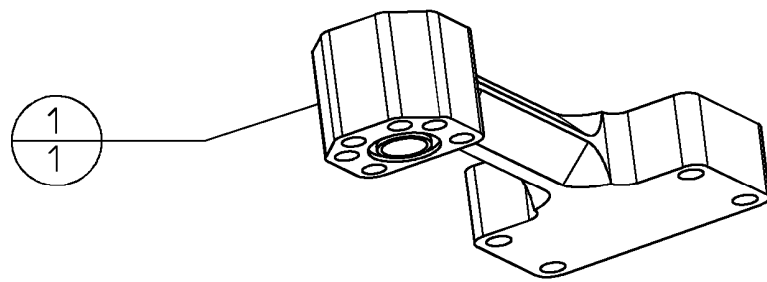
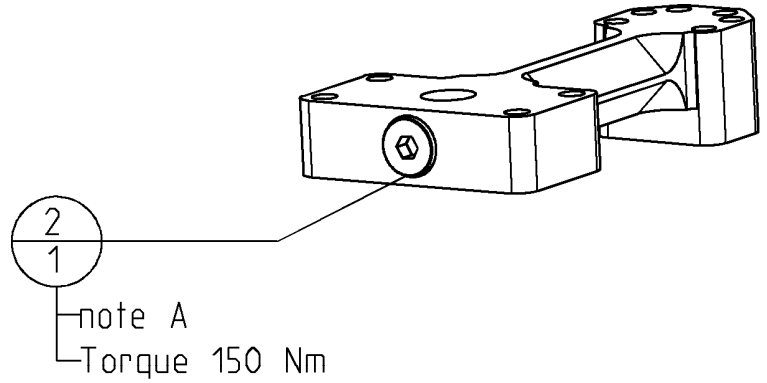
Multi Quick Processor	Page	10	of	25
	Date	August 2014		
	Product type	MQP-25-Y		
Cylinder GP	Number	501271-00		

32	502344_RM501270	Seal - set	1
31	291057570	SAE stop	1
30	290058184	Blanking end ISO 6149	2
29	506048	Hex. socket head cap screw	2
28	506033	Lockwasher - Schnorr	2
27	504069	Scraper	2
26	503503	SAE split - flange	2
25	502474	Rod - eye	1
24	502430	Cylinder - head	1
23	502426	Cylinder - house asm.	1
22	502424	Bolt - banjo asm.	1
21	502308	Spacer	2
20	502298	Rod-tube	1
19	502295	Lockplate	2
18	502294	Bearing	2
17	502258	Blanking cover	1
16	502112	Lockplate	1
15	501278	Support - protection cap	1
14	501272	Bottom asm.	1
13	500601	O-ring	2
12	500600	O-ring	2
11	500570	Bushing	2
10	500417	Hex. socket set screw	2
9	500347	Flat countersunk head cap screws	8
8	500333	Flat countersunk head cap screws	2
7	500267	Hex. socket head cap screw	43
6	500260	Hex. socket head cap screw	2
5	500258	Hex. socket head cap screw	4
4	500250	Hex. socket head cap screw	4
3	500133	Bolts Hexagon	4
2	500068	Washer spring	4
1	500006	Nut Hexagon	2
POS	PARTNUMBER	PARTNAME	QT

Multi Quick Processor

Page	11	of	25
Date	August 2014		
Product type	MQP-25-Y		
Number	501276-00		

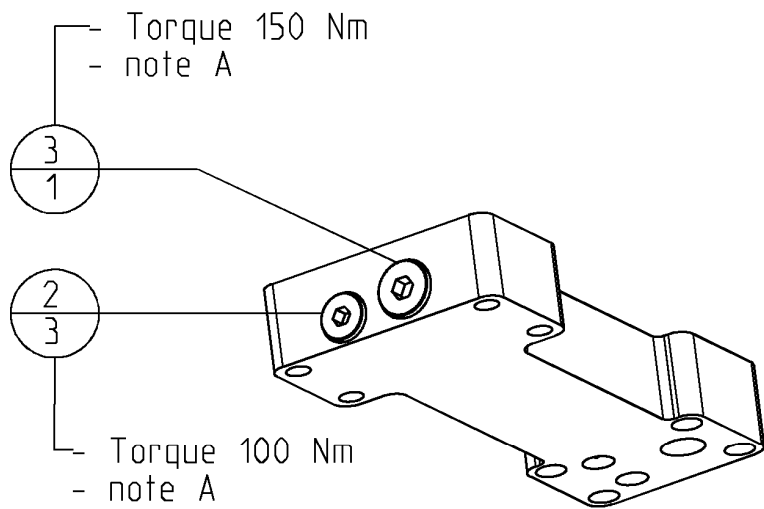
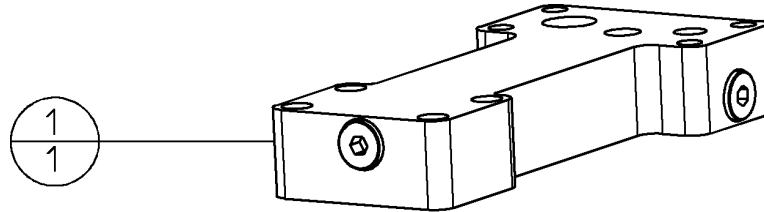
Flange GP rod



note A
Mount with Cyberbound TT62
according intructions at the end
of this partsbook.

2	290058185	Blanking end ISO 6149	1
1	501277	Flange - rod	1
POS	PARTNUMBER	PARTNAME	QT

Multi Quick Processor	Page	12	of	25
	Date	August 2014		
	Product type	MQP-25-Y		
Flange GP bottom	Number	502686-01		



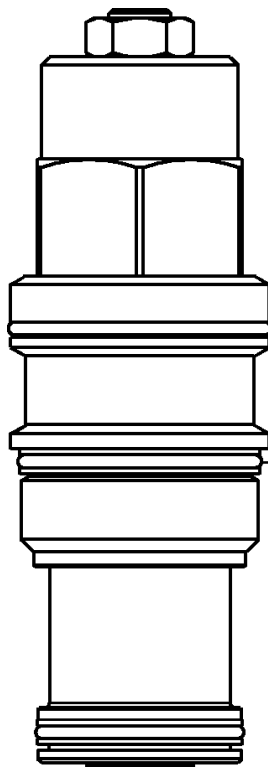
note A
 Mount with Cyberbound TT62
 according intructions at the end
 of this partsbook.

3	290058185	Blanking end ISO 6149	1
2	290058184	Blanking end ISO 6149	3
1	502687	Flange - bottom	1
POS	PARTNUMBER	PARTNAME	QT

Multi Quick Processor	<i>Page</i>	14	<i>of</i>	25
	<i>Date</i>	August 2014		
	<i>Product type</i>	MQP-25-Y		
Valve GP	<i>Number</i>	501240-00		

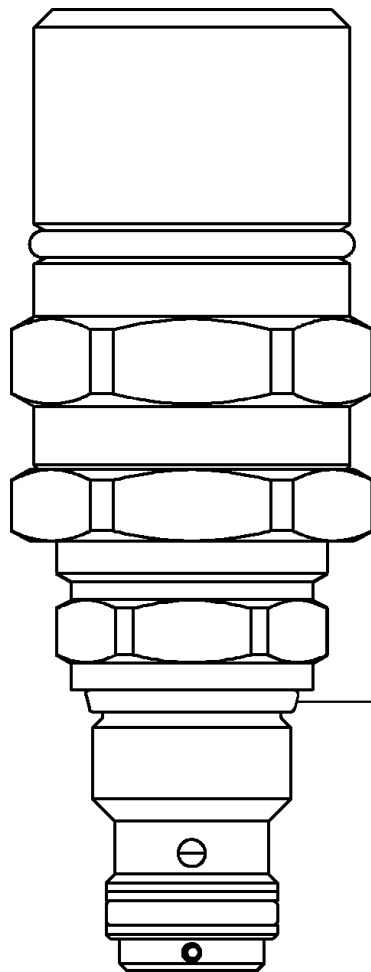
19	290058186	Blanking end ISO 6149	3
18	290058185	Blanking end ISO 6149	1
17	290058184	Blanking end ISO 6149	2
16	121067231	Nut Hexagon sealing	2
15	504009	Quad-ring	2
14	502117	Valve - check	1
13	501378	Valve - check	1
12	501377	Valve - check	1
11	501376	Valve - overload protection	1
10	501246	Blanking end	1
9	501245	Blanking plug	7
8	501244	Bleeding screw	1
7	501243	Orifice Ø0,5	2
6	501242	Valve - check	2
5	501241	Housing	1
4	501235	Valve - counter balance	1
3	500601	Seal - flange	1
2	500600	Seal - flange	1
1	500412	Hex. socket set screw	1
POS	PARTNUMBER	PARTNAME	QT

Multi Quick Processor	<i>Page</i>	15	<i>of</i>	25
	<i>Date</i>	August 2014		
	<i>Product type</i>	MQP-25-Y		
Counter balance valve	<i>Number</i>	501235-00		



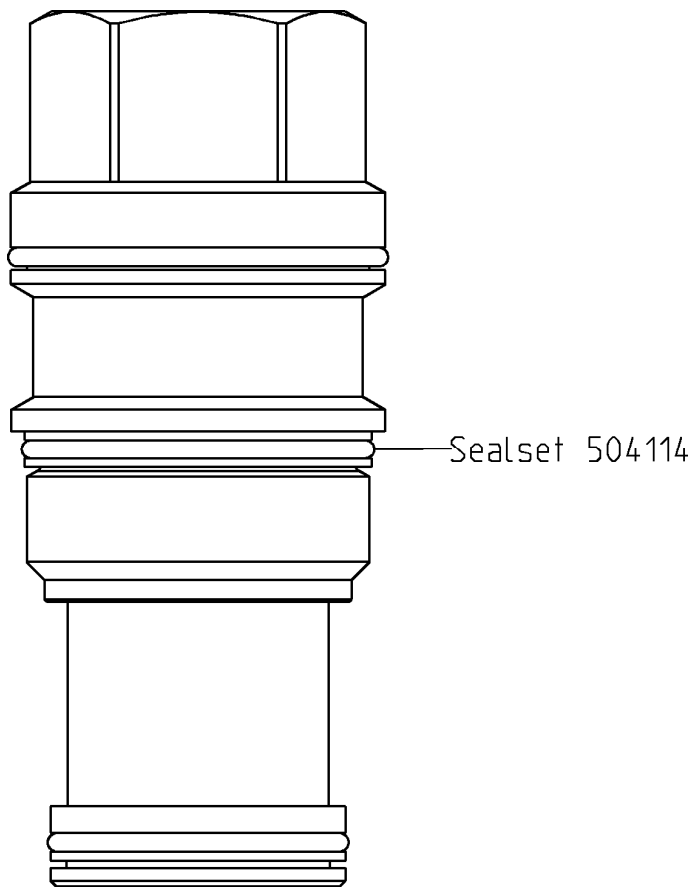
Sealset 504114

Multi Quick Processor	Page	16	of	25
	Date	August 2014		
	Product type	MQP-25-Y		
Overload protection valve	Number	501376-00		

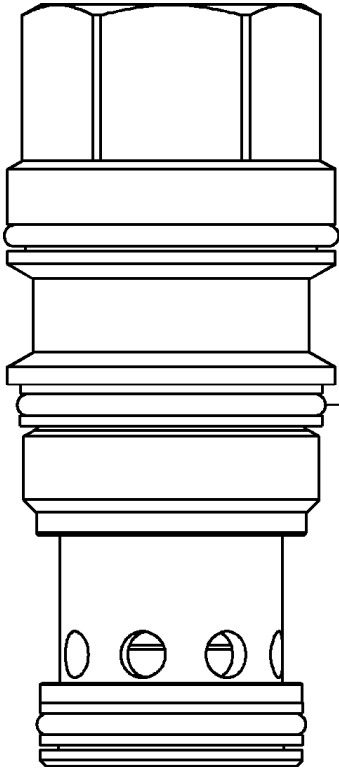


Sealset 504119

Multi Quick Processor	Page	17	of	25
	Date	August 2014		
	Product type	MQP-25-Y		
Check valve	Number	501377-00		

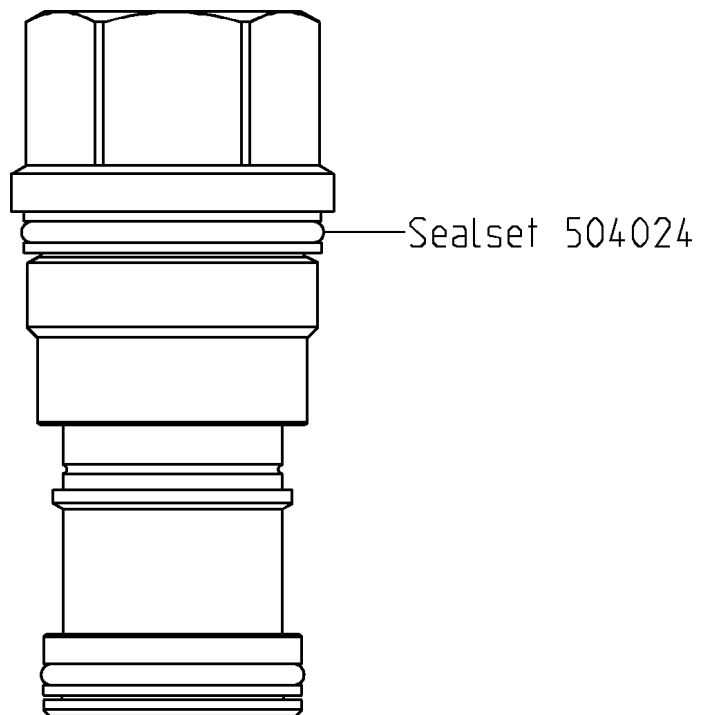


Multi Quick Processor	Page	18	of	25
	Date	August 2014		
	Product type	MQP-25-Y		
Check valve	Number	501378-00		



Sealset 504057

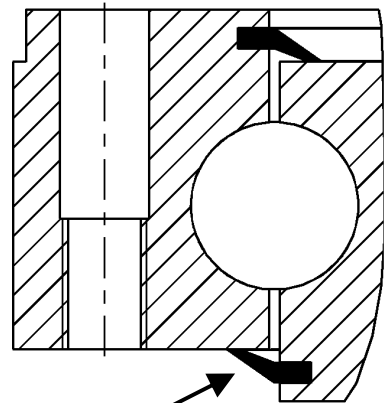
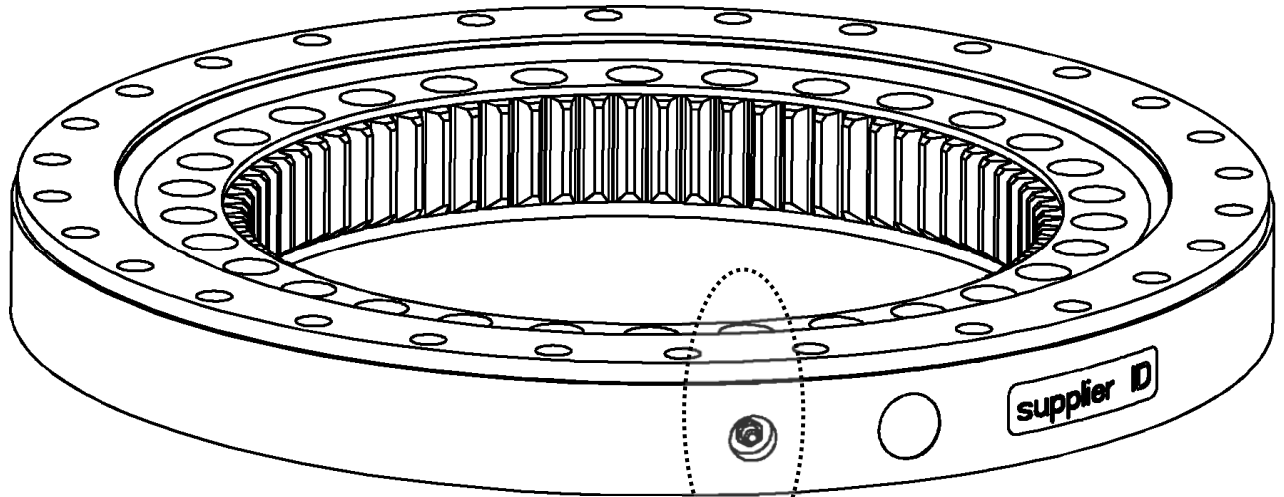
Multi Quick Processor	<i>Page</i>	19	<i>of</i>	25
	<i>Date</i>	August 2014		
	<i>Product type</i>	MQP-25-Y		
Check valve	<i>Number</i>	502117-01		



Multi Quick Processor

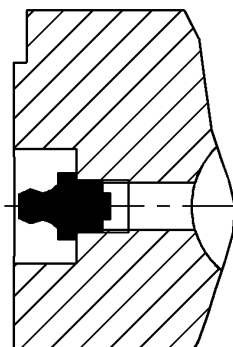
Page	20	of	25
Date	August 2014		
Product type	MQP-25-Y		
Number	500590-03		

Slewing ring

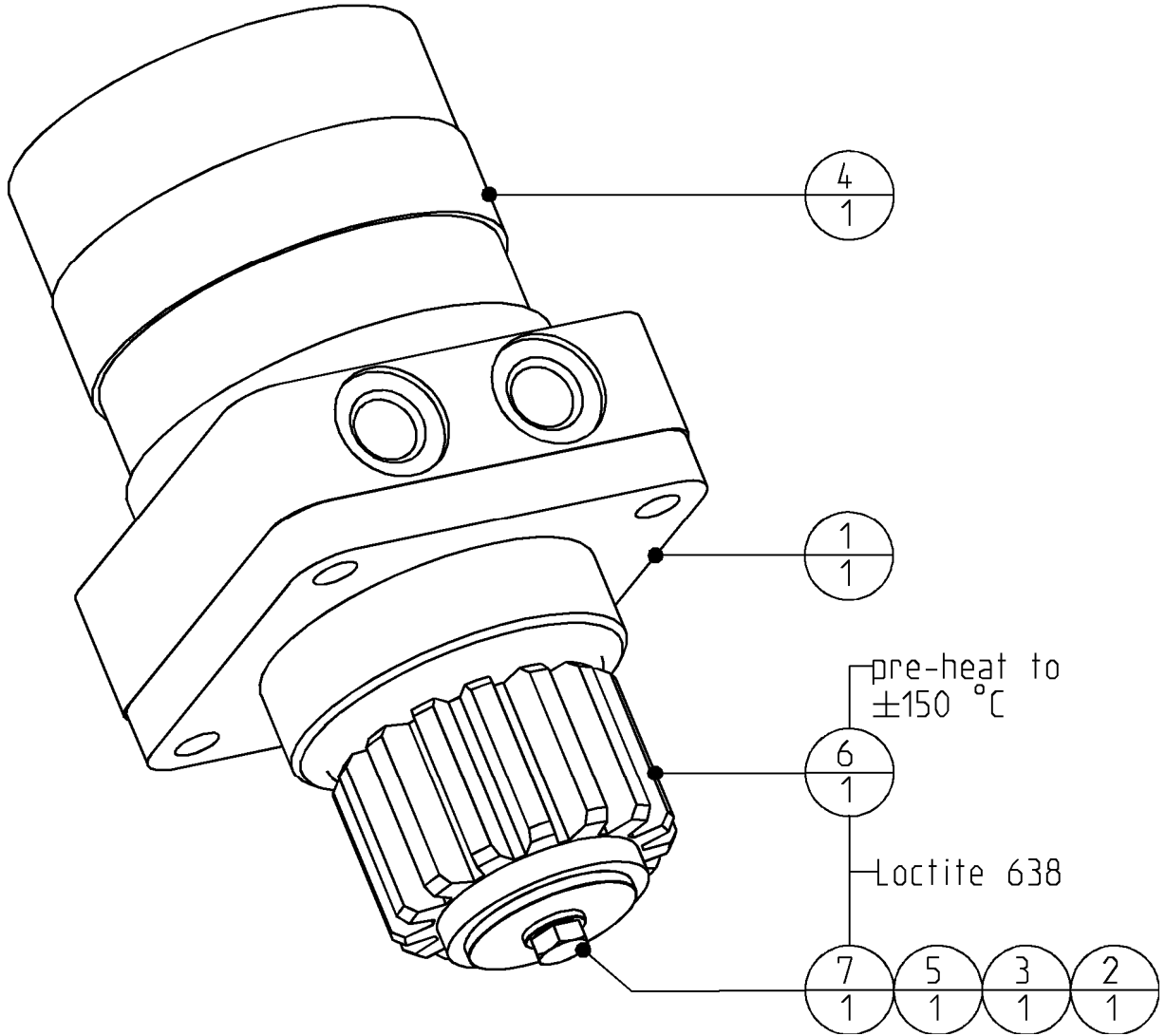


**2x seal 256060894
mount with Loctite 480**

**2x grease nipple
500560**



Multi Quick Processor	Page	21	of	25
	Date	August 2014		
	Product type	MQP-25-Y		
Hydraulic motor GP	Number	404727-02		

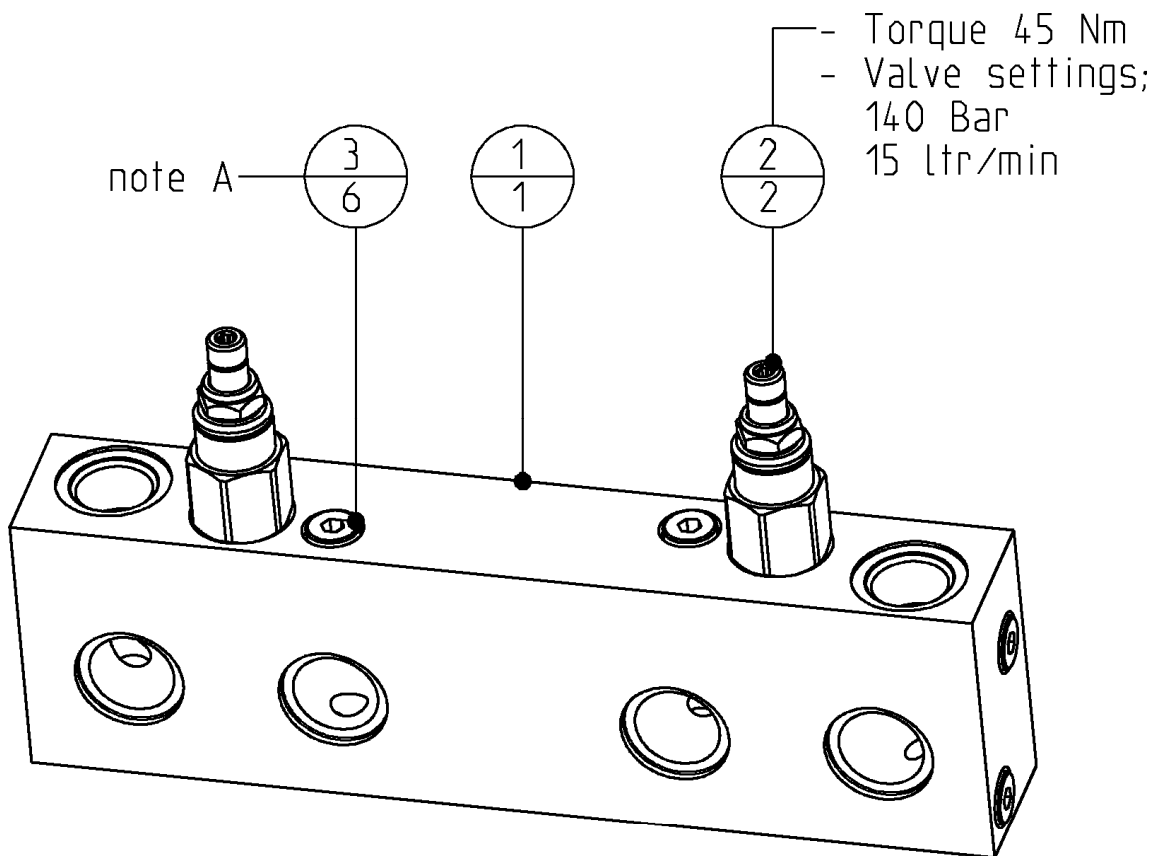


7	120050416	Bolts Hexagon	1
6	508079	Pinion	1
5	506044	Key - parallel	1
4	501090	Hydraulic motor	1
3	500067	Washer spring	1
2	404729	Washer	1
1	404728	Motorflange	1
POS	PARTNUMBER	PARTNAME	QT

Multi Quick Processor

Page	22	of	25
Date	August 2014		
Product type	MQP-25-Y		
Number	502910-02		

Valve GP



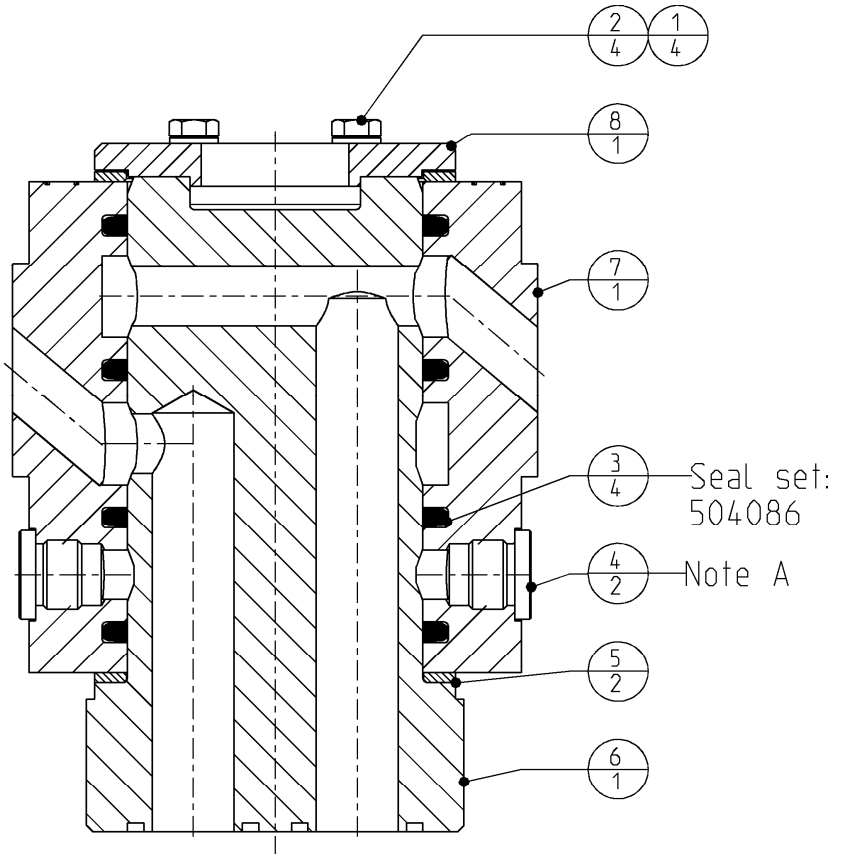
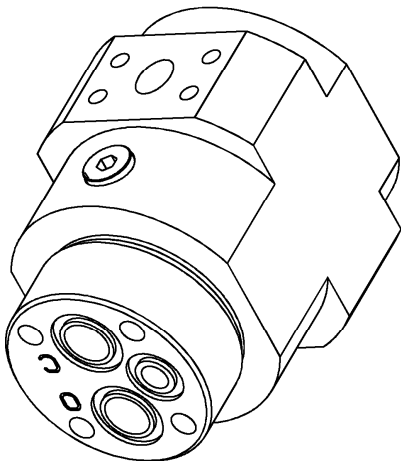
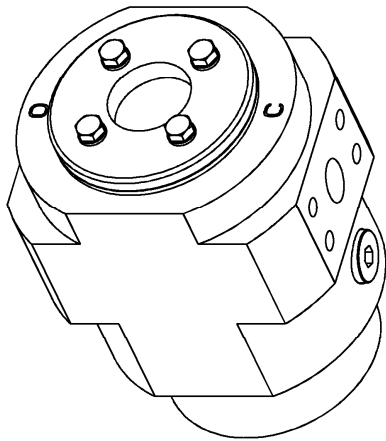
Note A
Mount with Cyberbound TT62
according instructions at the end
of this partsbook.

3	290066544	Blanking end ISO 6149	6
2	271060533	Cartridge relief	2
1	502911	Baseplate	1
POS	PARTNUMBER	PARTNAME	QT

Multi Quick Processor

Page	23	of	25
Date	August 2014		
Product type	MQP-25-Y		
Number	502286-05		

Swivel GP



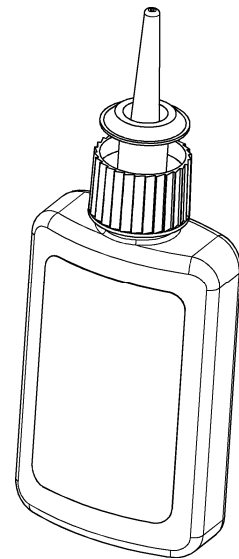
note A
Mount with Cyberbound TT62
according instructions at the end
of this partsbook.

8	502289	Cover	1
7	502288	Housing	1
6	502287	Stator	1
5	500832	Axial ring	2
4	500652	Blanking end	2
3	500630	Seal - Roto Glyd Ring	4
2	500105	Bolts Hexagon	4
1	500066	Washer spring	4
POS	PARTNUMBER	PARTNAME	QT

Multi Quick Processor	<i>Page</i>	24	<i>of</i>	25
	<i>Date</i>	August 2014		
	<i>Product type</i>	MQP-25-Y		
Additional parts	<i>Number</i>	n.a.		

Chemical lock

195050158	Cyberbond TT62 Pumpgel	1
506018	Loctite 480 Flacon 20 gr	1
506017	Loctite 638 Flacon 50 ml	1
506016	Loctite 270 Flacon 50 ml	1
PARTNUMBER	PARTNAME	QT



Multi Quick Processor	Page	25	of	25
	Date	August 2014		
	Product type	MQP-25-Y		
Instructions	Number	n.a.		

Mounting instructions for Cyberbound TT 62

This instruction shall guarantee that all hydraulic fittings and cartridges will be mounted and glued in correctly.

Procedure:

Clean and degrease thoroughly all components with a special cleaner for anaerobic adhesives (e.g. Loctite cleaner 7063) or acetone.

Apply on the outside thread only a bead of Cyberbond TT62 pump gel to approx. 2/3 of the girth of the second thread for fittings up to a diameter of 20mm or to the entire girth for fittings with a diameter larger than 20mm.



Cyberbound
TT 62



Clean from adhesive residues pressed out from the bore hole after fitting.

ATTENTION. The sealings shall be free of adhesive residues!

Tighten fittings with given fastening torques.

Standard torque values for bolts (when not indicated)

Thread size	Torque (Nm) for quality		
	8.8	10.9	12.9
M8	22,5	32,4	38,7
M10	45,0	63,0	75,6
M12	77,4	109,0	131,0
M16	194,0	270,0	324,0
M20	369,0	522,0	630,0
M24	639,0	900,0	1080,0
M27	945,0	1305,0	1575,0
M30	1260,0	1800,0	2160,0



DEMAREC AND KINSHOFER WORLDWIDE

Netherlands:

Demarec

Demolition and Recycling Equipment BV

Den Hoek 10

5845 EL St. Anthonis

Netherlands

TEL. +31 (0) 485 442300

FAX +31 (0) 485 442120

Email:

info@demarec.com

United Kingdom:

Kinshofer UK Ltd.

4 Milton Industrial Court,

Horsfield Way, Bredbury

Stockport, Cheshire, SK6 2TA

United Kingdom

TEL. +44 (0) 161 - 406 7046

FAX +44 (0) 161 - 406 7014

Email:

sales@kinshofer.co.uk

France:

Kinshofer France S.A.R.L.

B.P. 20100

67213 Obernai Cedex

France

TEL. +33 (0) 388 39 55 00

FAX +33 (0) 388 79 06 75

Email:

info@kinshofer.fr

Czech Republic:

Kinshofer CZ s.r.o.

Cs. Legji 568

37810 Ceske Velenice

Czech Republic

TEL. +420 384 – 795 110

FAX +420 384 – 795 120

Headquarters:

Germany:

Kinshofer GmbH

Hauptstrasse 76

83666 Waakirchen

Germany

TEL. +49 (0) 8021 – 88 99 0

FAX +49 (0) 8021 – 88 99 37

Email:

info@kinshofer.com

North America:

Kinshofer North America

5040 Mainway Drive, Unit 11

Burlington, ON L7L 7G5

Canada

TEL. +1 (905) 335 2856

FAX +1 (905) 335 4529

Toll Free in Canada and USA:

TEL. 1-800-268-9525

Email:

sales-northamerica@kinshofer.com

Finland:

Kinshofer Aponox Oy

Terminaalitie 10

13430 Hämeenlinna

Finland

TEL. +358 (0)75 7540 200

FAX +358 (0)75 7540 210

Beijing:

Darda Kinshofer

Construction Machinery Co. Ltd.

Unit #306, Landmark Tower 2

8 Dongsanhuan Road

Beijing 100004

China

TEL. +86 (10) 6590 6422

FAX +86 (10) 6590 6423

Email:

info@darda.com.cn