

# Parts book

Product type
DLD-45 Serie 1



Den Hoek 10  
5845 EL St. Anthonis  
the Netherlands  
Telephone +31 (0)485 442300  
Fax +31 (0)485 442120

[info@demarec.com](mailto:info@demarec.com)  
[www.demarec.com](http://www.demarec.com)



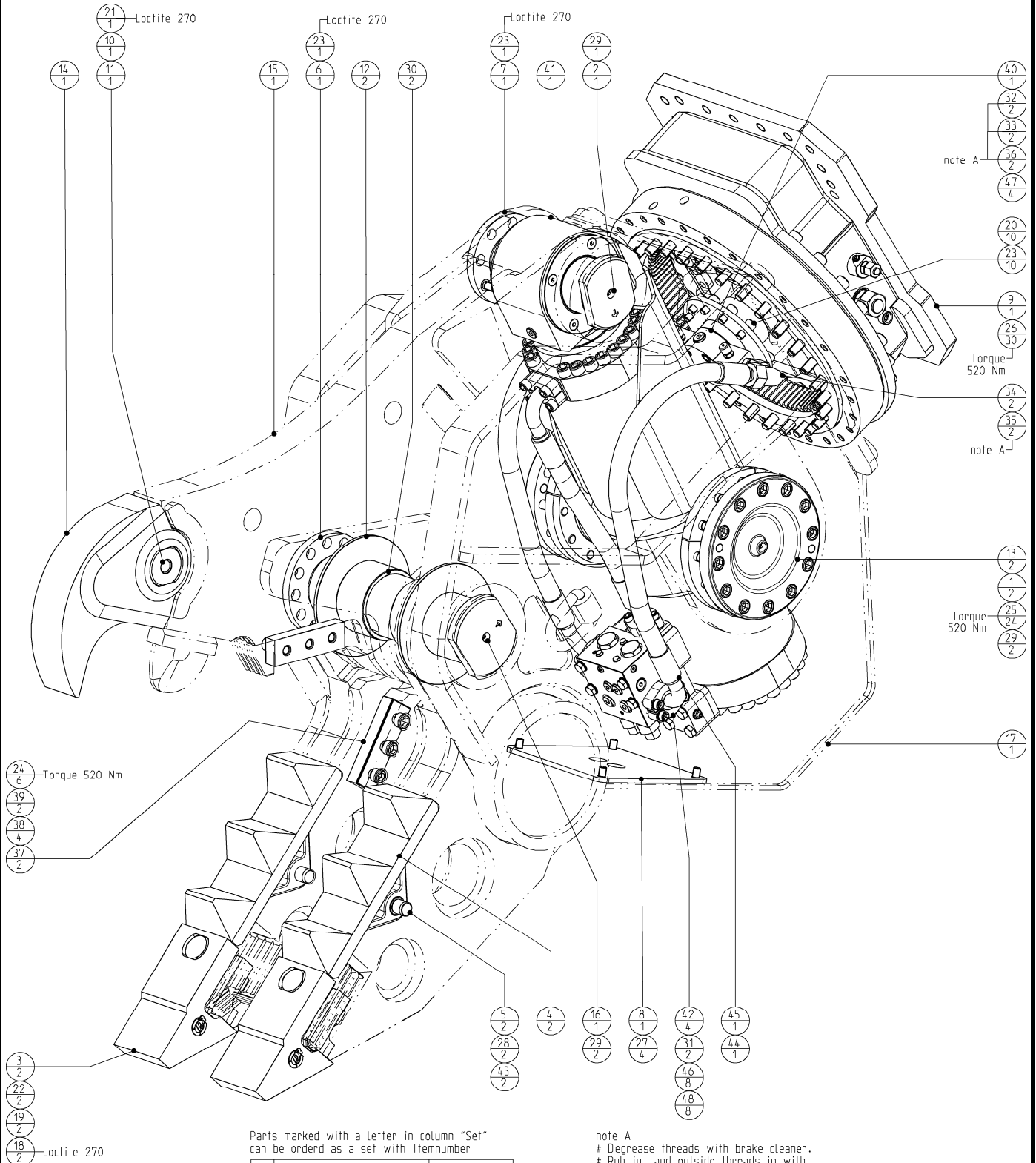
*Copyright Demolition and Recycling Equipment BV  
All rights strictly reserved.  
Reproductions to third parties in any form whatever is not permitted  
without written authority from the proprietor*

*Partsbook\_404585-01.doc*

# Rotatable Demolition Shear

## Housing GP

Page	1	of	17
Date	August 2010		
Product type	DLD-45		
Number	DLD45L095AAA5 404585-01		



Parts marked with a letter in column "Set" can be ordered as a set with Itemnumber

Set	Wearpartset	Itemnumber
a	Tripod shroud set	402820
b	Cuttingedges set	402821
c	Scraper teeth set	402818
d	Rippertooth set (excl. pin)	402842

note A

- # Degrease threads with brake cleaner.
- # Rub in- and outside threads in with Cyberbound TT62 by using a brush.
- # Clean seal from plug during screwing in.
- # A drying time from the glue of at least 1 hour needs to be respected before if has any contact with oil.

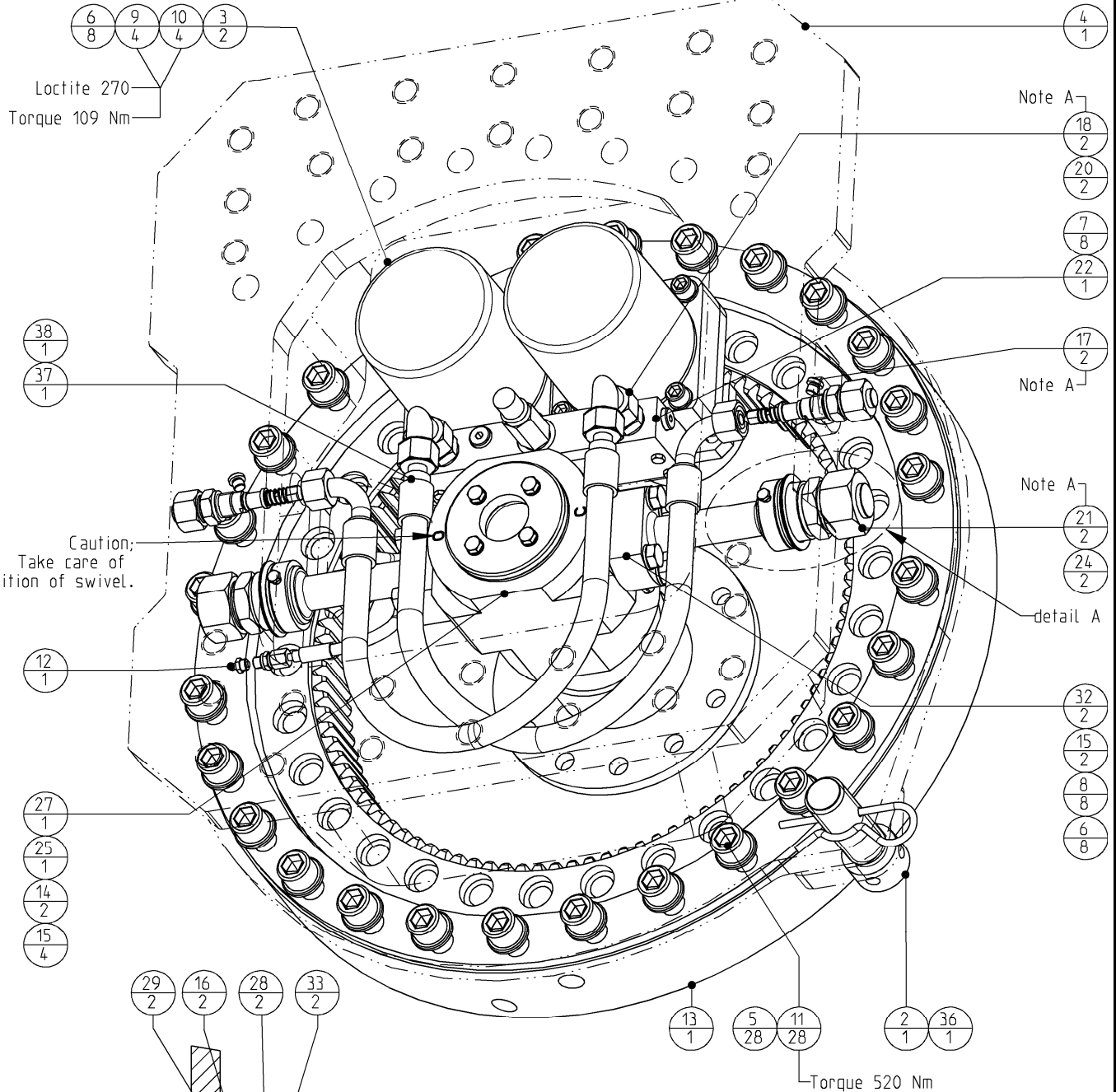
<b>Rotatable Demolition Shear</b>	Page	<b>2</b>	of	<b>17</b>
	Date	<b>August 2010</b>		
	Product type	<b>DLD-45</b>		
<b>Housing GP</b>	Number	<b>DLD45L095AAA5 404585-01</b>		

						25	500276	Hex. socket head cap screw	24
					b	24	500271	Hex. socket head cap screw	6
	48	122012249	Washer hex.sckt head	8		23	500258	Hex. socket head cap screw	12
	47	506021	Hex. socket head cap screw	4	c	22	500201	Bolts Hexagon	2
	46	506005	Hex. socket head cap screw	8	d	21	500144	Bolts Hexagon	1
	45	505005_RH_VG11	Hydr. hose asm. 1" SAE 100R13	1		20	500069	Washer spring	10
	44	505005_LH_VG11	Hydr. hose asm. 1" SAE 100R13	1	c	19	500058	Washer HV	2
a	43	504053	O-ring	2	c	18	500009	Nut Hexagon	2
	42	503504	SAE split-flange	4		17	404592	Housing asm. machined	1
	41	502720	Hydraulic Cylinder & Valve GP	1		16	404584	Pin	1
	40	501035	Swivel - flange	1		15	403825	Jaw - upper asm.	1
b	39	500952	Shim - straight	2	d	14	402922	Ripper - tooth	1
b	38	500951	Shim - straight	4		13	402918	Bearing housing	2
b	37	500950	Shear - blade straight	2		12	402482	Spacer	2
	36	500740	Test-point	2		11	402163	Lock - pin	1
	35	500698	Male stud coupling	2	d	10	401965	Lock - cover	1
	34	500676	Adjustable male stud elbow	2		9	401766	Rotatorhead GP	1
	33	500653	Blanking end	2		8	401723	Cover	1
	32	500652	Blanking end	2		7	401313	Locknut	1
	31	500603	O-ring	2		6	401312	Locknut M100x4	1
	30	500573	Bushing	2	a	5	401311	Lock - pin	2
	29	500560	Grease - nipple	5	a	4	401194	Shroud - tripod	2
a	28	500559	Tension bush - outside	2	c	3	401193	Tooth - scraper	2
	27	500358	Flat countersunk head cap screws	4		2	400726	Pin	1
	26	500302	Hex. socket head cap screw	30		1	400722	Ring	2
					<b>Set</b>	<b>POS</b>	<b>PARTNUMBER</b>	<b>PARTNAME</b>	<b>QT</b>

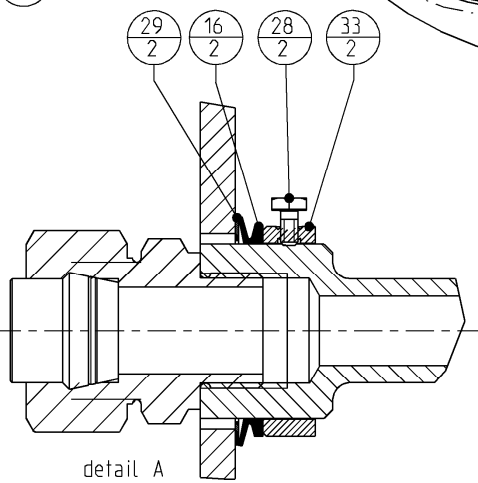
# Rotatable Demolition Shear

Page	<b>3</b>	of	<b>17</b>
Date	<b>August 2010</b>		
Product type	<b>DLD-45</b>		
Number	<b>401766-10</b>		

## Rotatorhead GP



Caution;  
Take care of  
position of swivel.

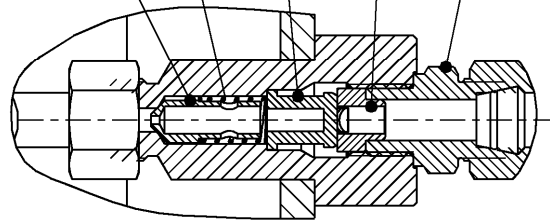
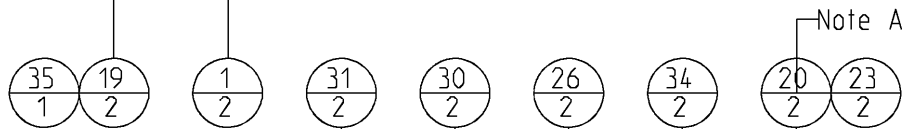
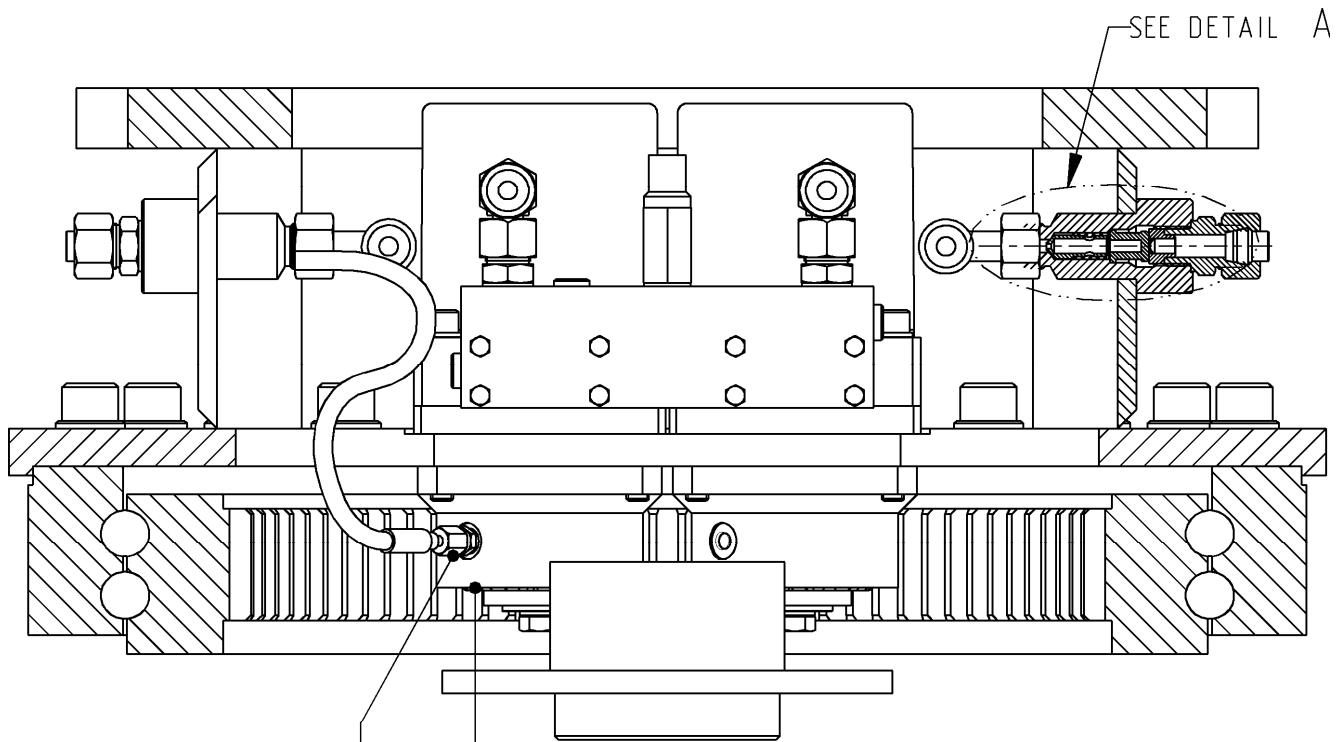


Note A  
 # Degrease threads with brake cleaner.  
 # Rub in- and outside threads in with Cyberbound TT62 by using a brush.  
 # Clean seal from plug during screwing in.  
 # A drying time from the glue of at least 1 hour needs to be respected before it has any contact with oil.

# Rotatable Demolition Shear

Page	<b>4</b>	of	<b>17</b>
Date	<b>August 2010</b>		
Product type	<b>DLD-45</b>		
Number	<b>401766-10</b>		

## Rotatorhead GP



**DETAIL A**

**Note A**

- # Degrease threads with brake cleaner.
- # Rub in- and outside threads in with Cyberbound TT62 by using a brush.
- # Clean seal from plug during screwing in.
- # A drying time from the glue of at least 1 hour needs to be respected before it has any contact with oil.

<b>Rotatable Demolition Shear</b>	<i>Page</i>	<b>5</b>	<i>of</i>	<b>17</b>
	<i>Date</i>	<b>August 2010</b>		
	<i>Product type</i>	<b>DLD-45</b>		
<b>Rotatorhead GP</b>	<i>Number</i>	<b>401766-10</b>		

--	--	--	--	--	--	--	--

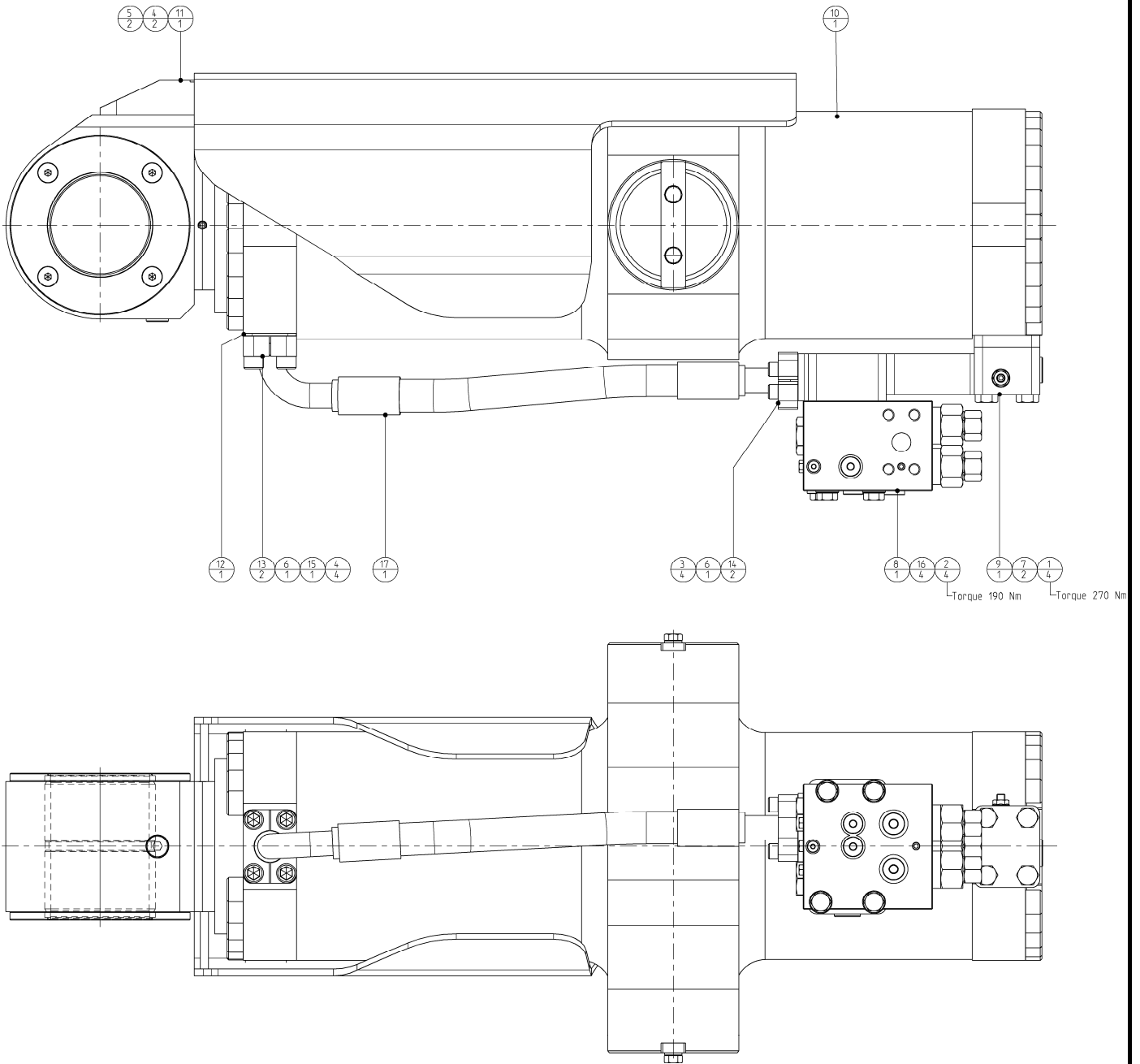
38	500840_VG02	Hydr. hose asm. 1/2" SAE 100 R2AT	1	19	500690	Male stud coupling	2
37	500840_VG01	Hydr. hose asm. 1/2" SAE 100 R2AT	1	18	500673	Adjustable male stud elbow	2
36	500504-3	Locking pin (hair-pin)	1	17	500649	Blanking end	2
35	296012429_VG01	Hydr. hose asm. 3/16" SAE 100R1AT	1	16	500621	Seal	2
34	773058645	Drossel - ring	2	15	500601	O-ring	6
33	773057512	Ring - adjusting	2	14	500600	O-ring	2
32	773056990	Hydraulic flange - pipe	2	13	500591	Stewing Ring; Internal Gear	1
31	273058601	Cone - valve + restriction	2	12	500560	Grease - nipple	1
30	165050749	Spring	2	11	500302	Hex. socket head cap screw	28
29	122010270	Ring - shim	2	10	500255	Hex. socket head cap screw	4
28	120014016	Bolts Hexagon	2	9	500253	Hex. socket head cap screw	4
27	502286	Swivel GP	1	8	500135	Bolts Hexagon	8
26	502000	Filter	2	7	500099	Bolts Hexagon	8
25	501074	Swivel - Flange Intermed.	1	6	500068	Washer spring	16
24	500948	Blanking plug	2	5	500055	Washer HV	28
23	500945	Blanking plug	2	4	401356	Rotatorhead asm. machined	1
22	500758	Valve GP	1	3	401201	Motor GP	2
21	500698	Male stud coupling	2	2	400066	Lock - pin	1
20	500693	Male stud coupling	4	1	400063	Cap - Pinion	2

POS	PARTNUMBER	PARTNAME	QT
-----	------------	----------	----

# Rotatable Demolition Shear

Page	<b>6</b>	of	<b>17</b>
Date	<b>August 2010</b>		
Product type	<b>DLD-45</b>		
Number	<b>502720-00</b>		

## Cylinder & Valve GP



<b>Rotatable Demolition Shear</b>	<i>Page</i>	<b>7</b>	<i>of</i>	<b>17</b>
	<i>Date</i>	<b>August 2010</b>		
	<i>Product type</i>	<b>DLD-45</b>		
<b>Cylinder &amp; Valve GP</b>	<i>Number</i>	<b>502720-00</b>		

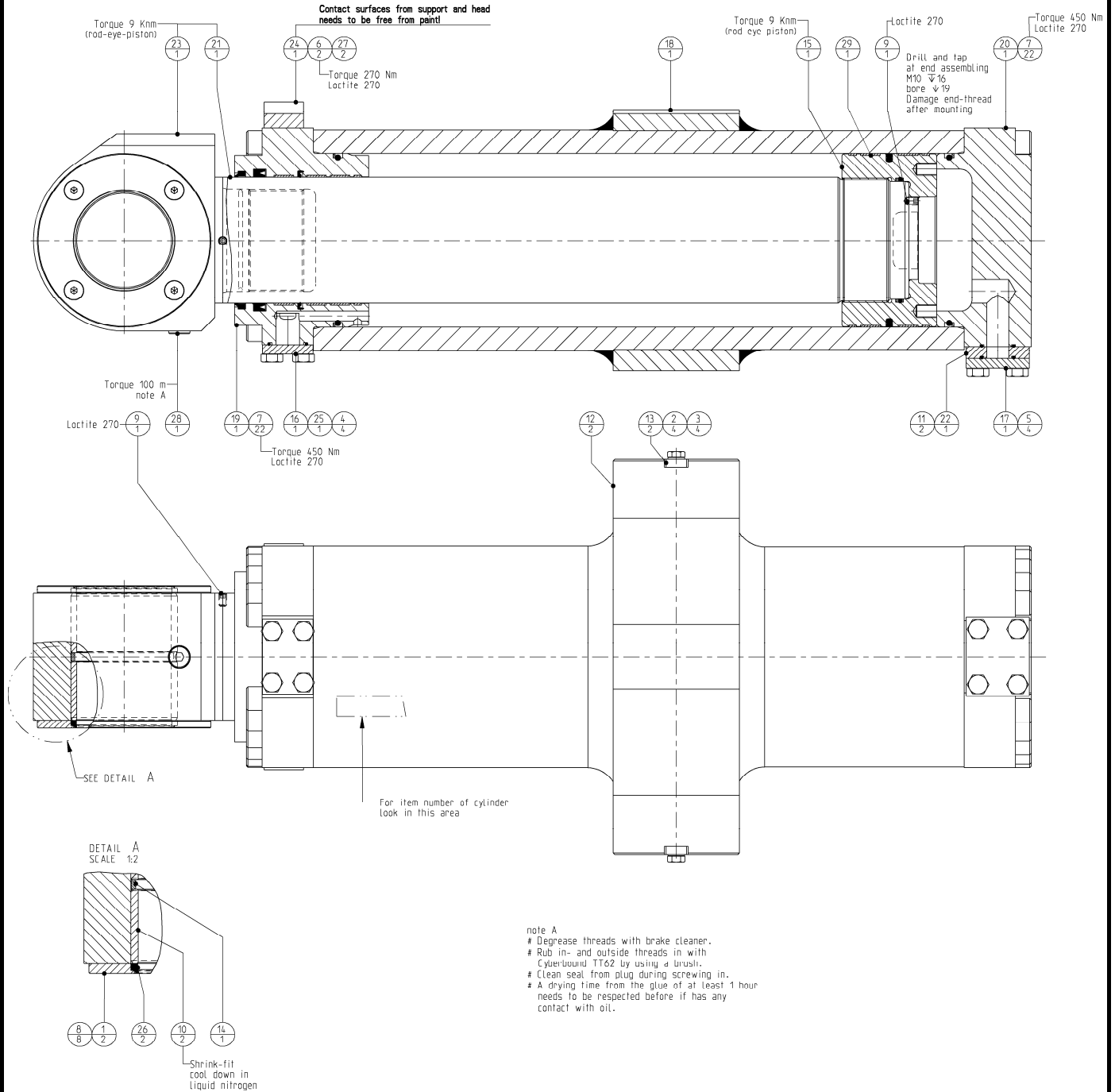
17	505090_RM502720	Hydr. hose asm. 1" SAE 100R13	1
16	122000163	Washer normal	4
15	504009	O-ring	1
14	503503	SAE split - flange	2
13	502730	Split - flange spec.	2
12	502729	Flange - intermed.	1
11	502723	Protection cap asm.	1
10	502721	Hydraulic cylinder GP	1
9	502559	Flange - bottom GP	1
8	500755	Overcentre valve	1
7	500603	O-ring	2
6	500601	O-ring	2
5	500265	Hex. socket head cap screw	2
4	500262	Hex. socket head cap screw	6
3	500250	Hex. socket head cap screw	4
2	500200	Bolts Hexagon	4
1	500151	Bolts Hexagon	4
<b>POS</b>	<b>PARTNUMBER</b>	<b>PARTNAME</b>	<b>QT</b>



# Rotatable Demolition Shear

## Cylinder GP

Page	8	of	17
Date	August 2010		
Product type	DL D-45		
Number	502721-00		



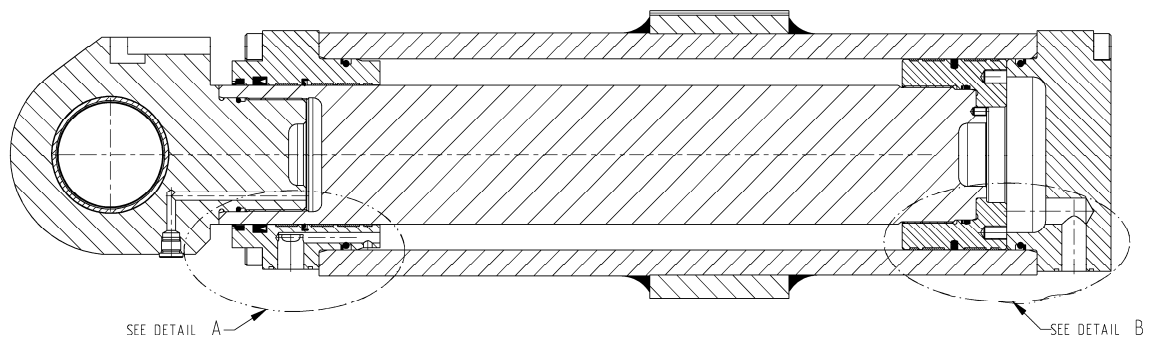
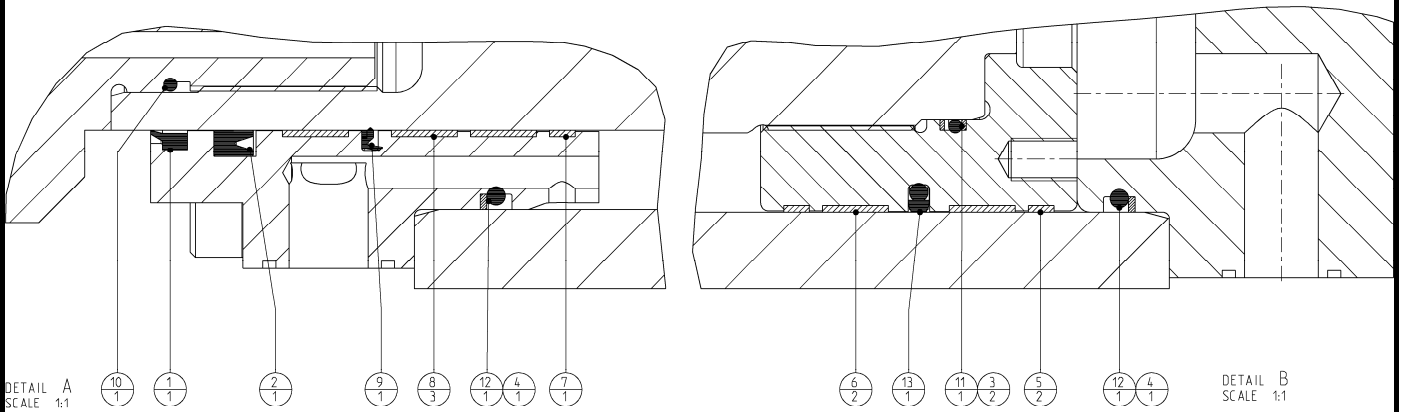
<b>Rotatable Demolition Shear</b>	<i>Page</i>	<b>9</b>	<i>Of</i>	<b>17</b>
	<i>Date</i>	<b>August 2010</b>		
	<i>Product type</i>	<b>DLD-45</b>		
<b>Cylinder GP</b>	<i>Number</i>	<b>502721-00</b>		

29	502576_RM502721	Seal - set	1
28	290058184	Blanking end ISO 6149	1
27	506033	Lockwasher - Schnorr	2
26	504020	Scraper	2
25	504009	O-ring	1
24	502728	Support - protection cap	1
23	502722	Rod - eye	1
22	502575	Flange - intermediate	1
21	502573	Rod	1
20	502572	Cylinder - bottom	1
19	502399	Cylinder - head	1
18	502392	Cylinder - house asm.	1
17	502259	Blanking cover	1
16	502253	Blanking cover	1
15	502200	Piston	1
14	501021	Spacer	1
13	501016	Lockplate	2
12	501015	Bearing	2
11	500603	O-ring	2
10	500572	Bushing	2
9	500417	Hex. socket set screw	2
8	500347	Flat countersunk head cap screws	8
7	500277	Hex. socket head cap screw	44
6	500260	Hex. socket head cap screw	2
5	500146	Bolts Hexagon	4
4	500144	Bolts Hexagon	4
3	500133	Bolts Hexagon	4
2	500068	Washer spring	4
1	401725	Spacer	2
<b>POS</b>	<b>PARTNUMBER</b>	<b>PARTNAME</b>	<b>QT</b>

# Rotatable Demolition Shear

## Sealset

Page	<b>10</b>	Of	<b>17</b>
Date	<b>August 2010</b>		
Product type	<b>DLD-45</b>		
Number	<b>502576-00</b>		



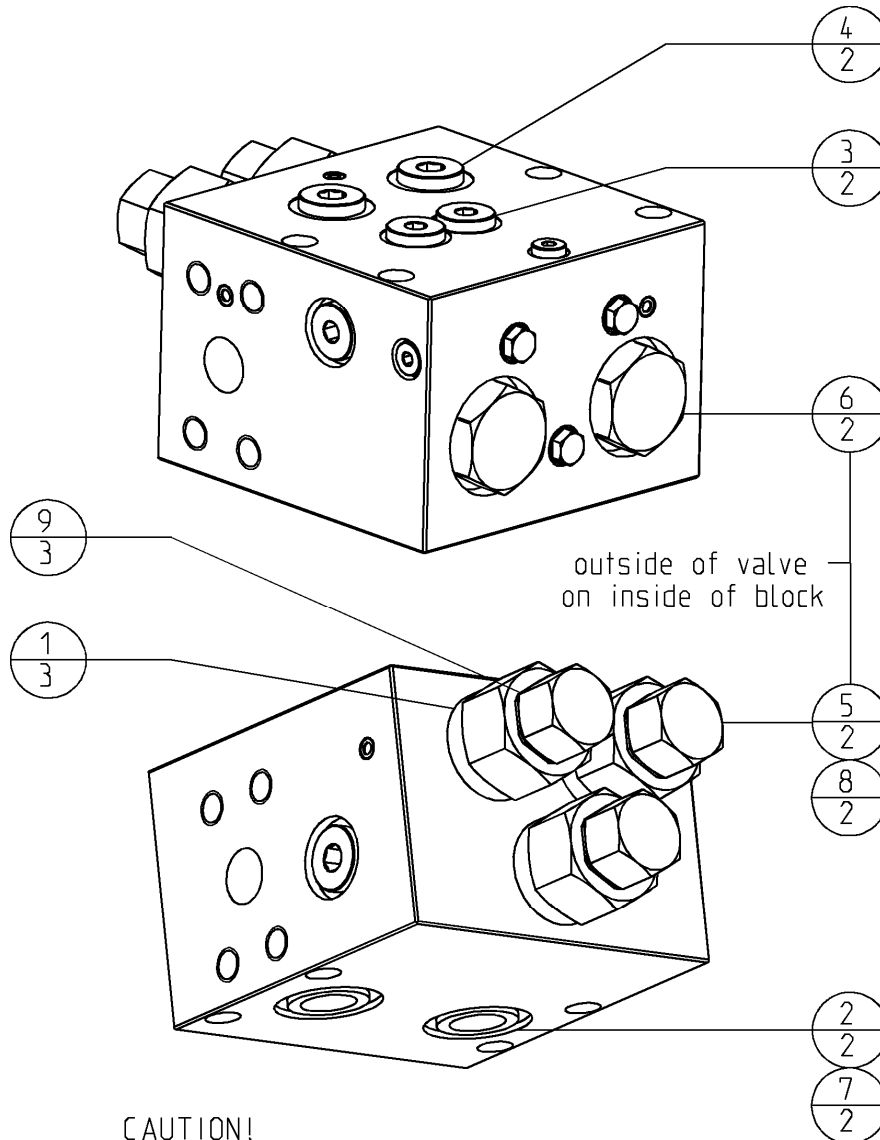
<b>Rotatable Demolition Shear</b>	<i>Page</i>	<b>11</b>	<i>of</i>	<b>17</b>
	<i>Date</i>	<b>August 2010</b>		
	<i>Product type</i>	<b>DLD-45</b>		
<b>Sealset</b>	<i>Number</i>	<b>502576-00</b>		

<b>Partslist sealset 502576-00</b>			
13	PT0402200	Turcon Glydring T	1
12	ORAR00445	O-ring	2
11	OR5015000	O-ring	1
10	OR5012000	O-ring	1
9	IBF160	Rod seal GP	1
8	GR7501600	Bearing Luytex	3
7	GR6901600	Bearing Turcite	1
6	GP7502200	Bearing Luytex	2
5	GP6902200	Bearing Turcite	2
4	BU5802084	Back-up ring	2
3	BU4001500	Back-up ring	2
2	B3G080P6000	U-Cup	1
1	504061	Scraper	1
<b>POS</b>	<b>PARTNUMBER</b>	<b>PARTNAME</b>	<b>QT</b>

# Rotatable Demolition Shear

Page	<b>12</b>	of	<b>17</b>
Date	<b>August 2010</b>		
Product type	<b>DLD-45</b>		
Number	<b>500755-03</b>		

## Overcentre valve



### CAUTION!

Valve is equipped with high quality seals.  
All valves and blanking ends are mounted according special instructions.

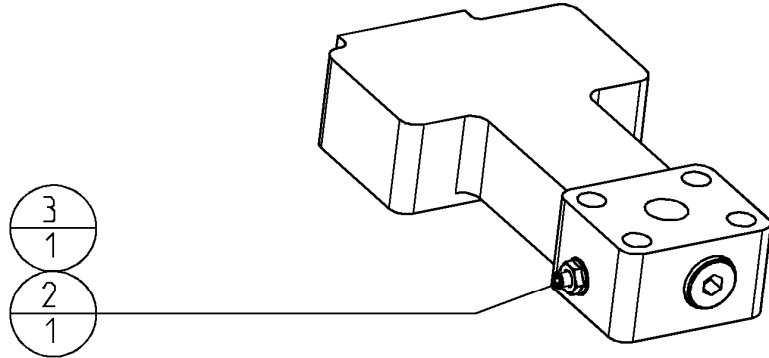
For further information contact your dealer.

9	504034	Bonded seal	3
8	n.a.	Back-up ring	2
7	504026	Back-up ring	2
6	n.a.	O-ring	2
5	n.a.	O-ring	2
4	504083	O-ring	2
3	504082	O-ring	2
2	504017	O-ring	2
1	500601	O-ring	3
<b>POS</b>	<b>PARTNUMBER</b>	<b>PARTNAME</b>	<b>QT</b>
<b>sealset 504080-01</b>			

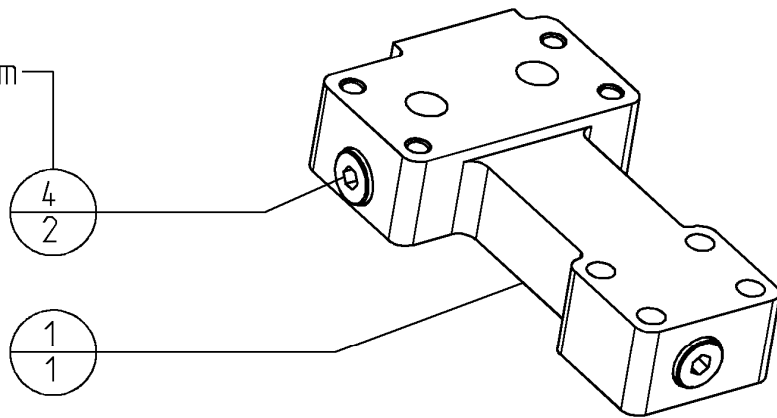
# Rotatable Demolition Shear

Page	13	of	17
Date	August 2010		
Product type	DLD-45		
Number	502559-00		

## Flange GP bottom



- Torque 150 Nm  
- note A



### note A

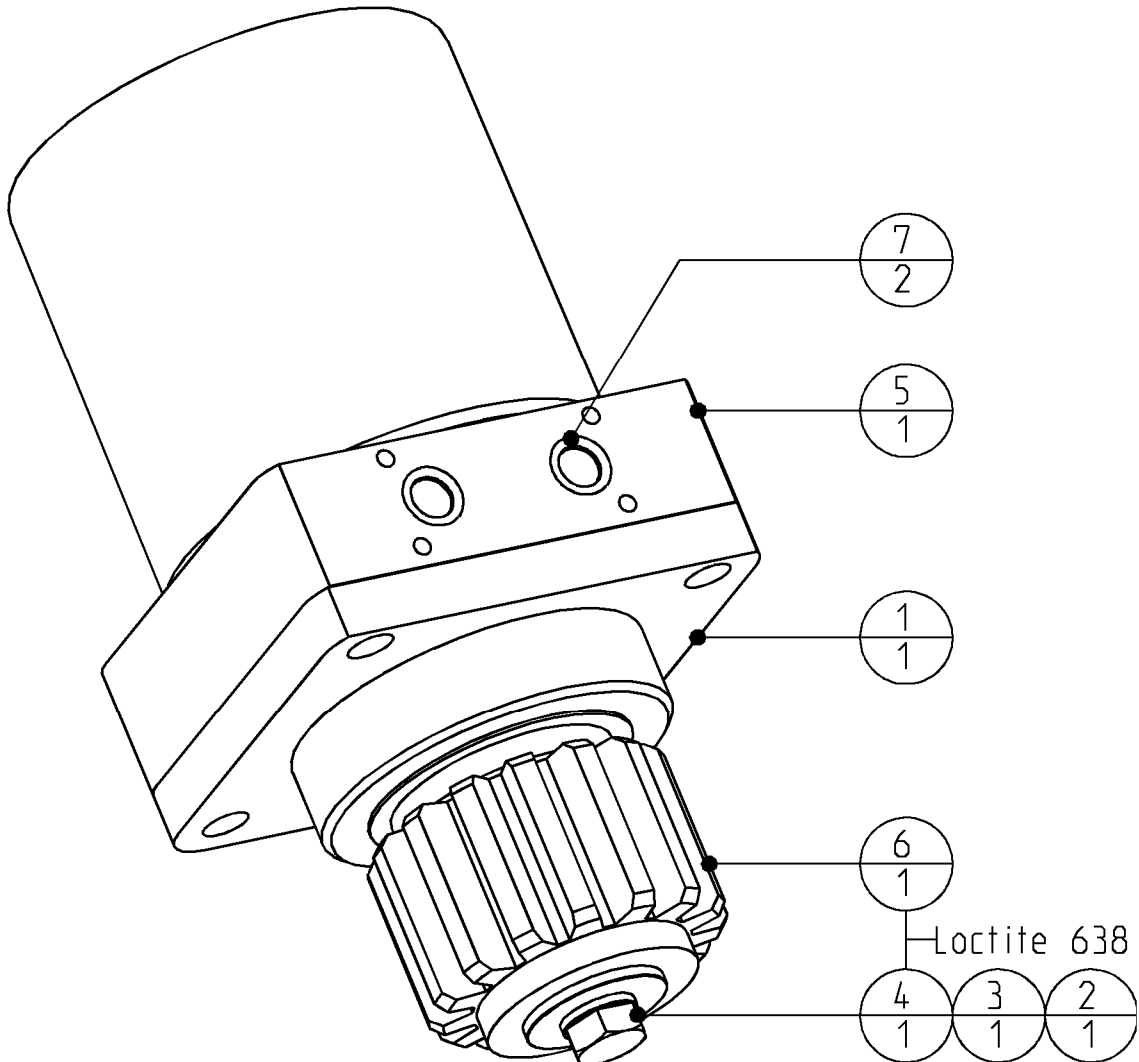
- # Degrease threads with brake cleaner.
- # Rub in- and outside threads in with Cyberbound TT62 by using a brush.
- # Clean seal from plug during screwing in.
- # A drying time from the glue of at least 1 hour needs to be respected before it has any contact with oil.

4	290058185	Blanking end ISO 6149	2
3	121060762	Nut Hexagon sealing	1
2	502562	Bleeding screw	1
1	502560	Flange - bottom	1
<b>POS</b>	<b>PARTNUMBER</b>	<b>PARTNAME</b>	<b>QT</b>

# Multi Quick Processor

Page	<b>14</b>	of	<b>17</b>
Date	<b>October 2009</b>		
Product type	<b>DLD-45</b>		
Number	<b>401201-00</b>		

## Hydraulic motor GP

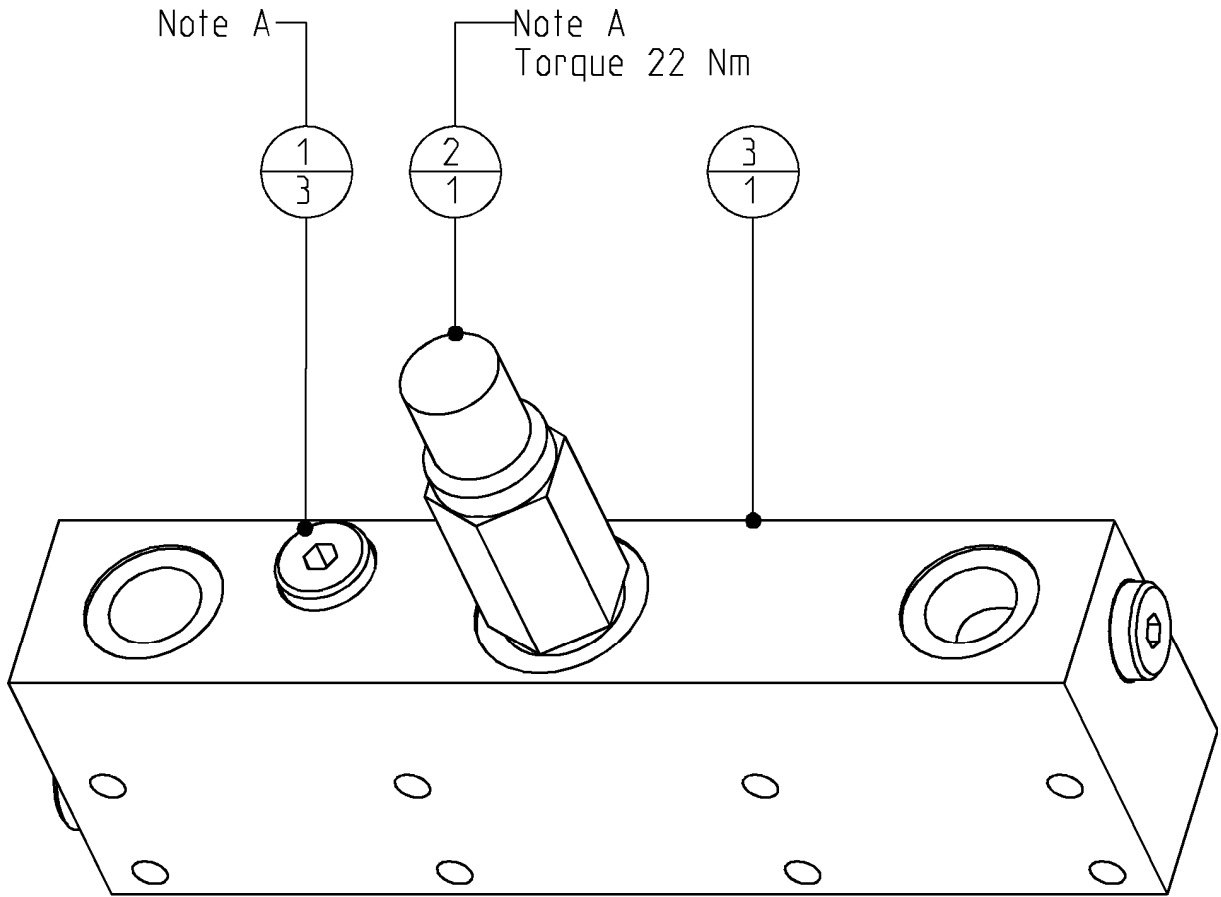


7	504070	O-ring	2
6	500851	Pinion	1
5	500763	Hydro-motor	1
4	500131	Bolts Hexagon	1
3	500068	Washer spring	1
2	500062	Washer car	1
1	400593	Motor-flange	1
<b>POS</b>	<b>PARTNUMBER</b>	<b>PARTNAME</b>	<b>QT</b>

# Rotatable Demolition Shear

Page	<b>15</b>	of	<b>17</b>
Date	<b>August 2010</b>		
Product type	<b>DLD-45</b>		
Number	<b>500758-03</b>		

## Valve GP



### Note A

- # Degrease threads with brake cleaner.
- # Rub in- and outside threads in with Cyberbound TT62 by using a brush.
- # Clean seal from plug during screwing in.
- # A drying time from the glue of at least 1 hour needs to be respected before it has any contact with oil.

3	500759	Baseplate	1
2	500757	cross-over relieve valve	1
1	500650	Blanking end	3
<b>POS</b>	<b>PARTNUMBER</b>	<b>PARTNAME</b>	<b>QT</b>



# Rotatable Demolition Shear

Page **16** of **17**

Date **August 2010**

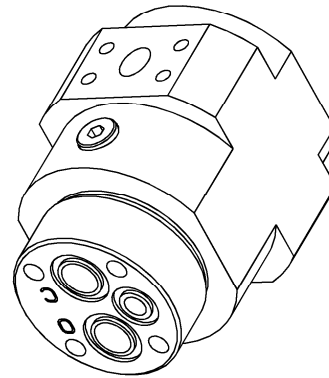
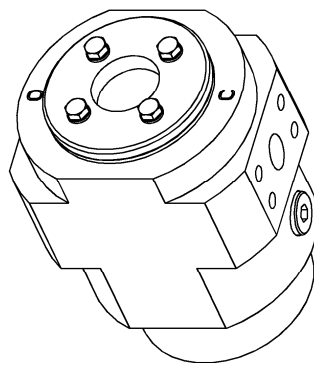
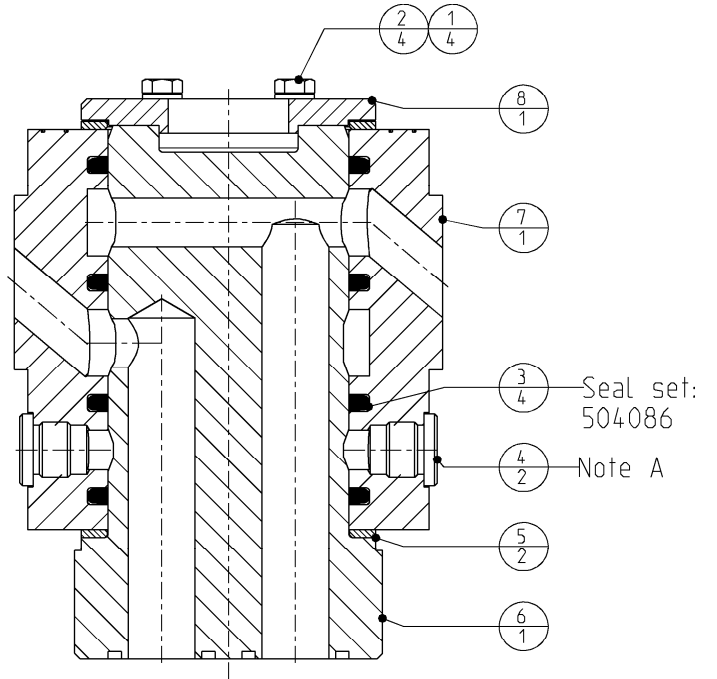
Product type **DLD-45**

## Swivel GP

Number **502286-02**

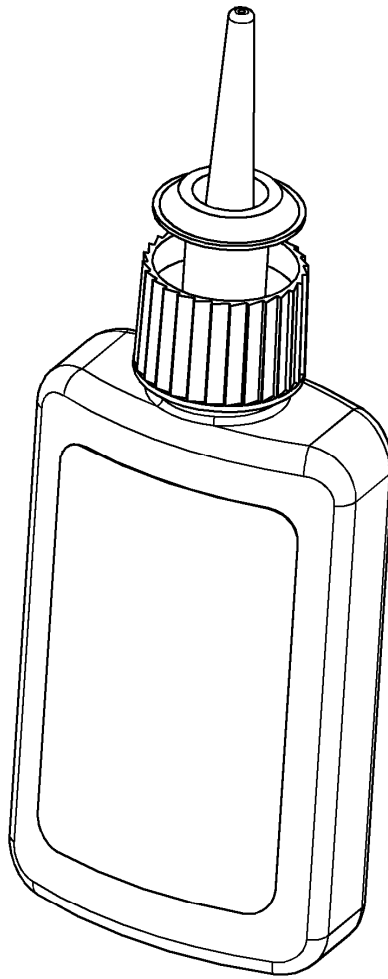
**note A**

- # Degrease threads with brake cleaner.
- # Rub in- and outside threads in with Cyberbound TT62 by using a brush.
- # Clean seal from plug during screwing in.
- # A drying time from the glue of at least 1 hour needs to be respected before if has any contact with oil.



8	502289	Cover	1
7	502288	Housing	1
6	502287	Stator	1
5	500832	Axial ring	2
4	500652	Blanking end	2
3	500630	Seal	4
2	500105	Bolts Hexagon	4
1	500066	Washer spring	4
<b>POS</b>	<b>PARTNUMBER</b>	<b>PARTNAME</b>	<b>QT</b>

<b>Rotatable Demolition Shear</b>	<i>Page</i>	<b>17</b>	<i>of</i>	<b>17</b>
	<i>Date</i>	<b>August 2010</b>		
	<i>Product type</i>	<b>DLD-45</b>		
<b>Chemical lock</b>	<i>Number</i>	<b>n.a.</b>		



195050158	Cyberbond TT62 Pumpgel	1
506017	Loctite 638 Flacon 50 ml	1
506016	Loctite 270 Flacon 50 ml	1
<b>PARTNUMBER</b>	<b>PARTNAME</b>	<b>QT</b>