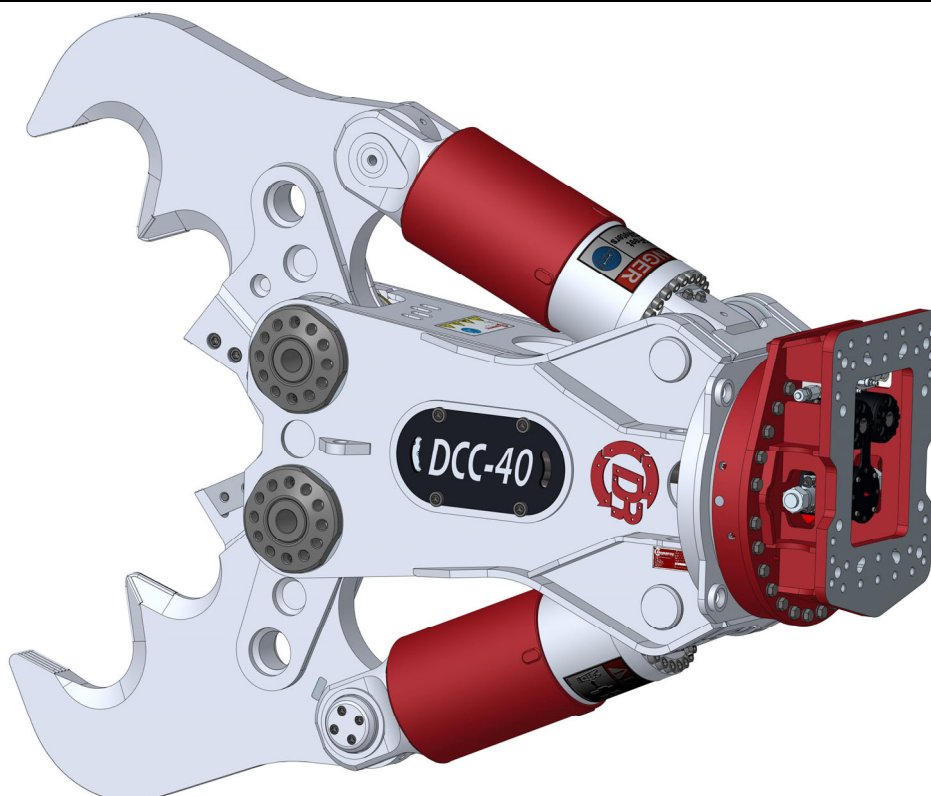




**Partsbook**  
for  
**Concrete Crusher**  
**DCC-40-A**

Product	Part Number	Ref.
DCC-40-A Serie 1	DCC040A135AAB6	



Partsbook\_dcc040a135aab6-d\_2021-03-25.docx

March 2021

**Demarec** Demolition and Recycling Equipment BV

De Hork 32, 5431 NS Cuijk, Netherlands

TEL.  
FAX

+31 (0) 485 442300  
+31 (0) 485 442120

INTERNET  
E-MAIL

[www.demarec.com](http://www.demarec.com)  
[info@demarec.com](mailto:info@demarec.com)

# Concrete Crusher

Page

1

of

36

Date

March 2021

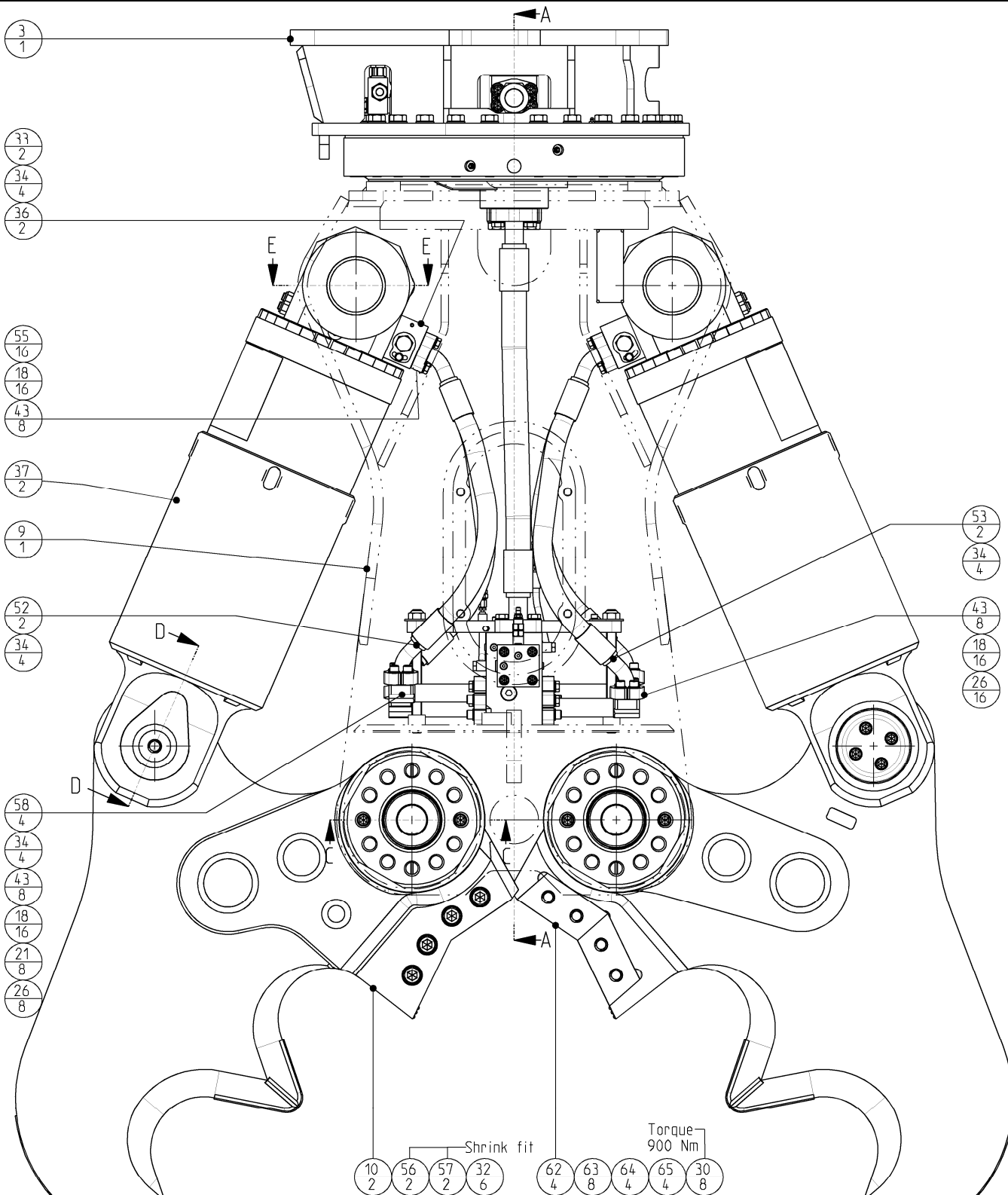
Product type

DCC-40-A

## Housing GP

Number

DCC040A135AAB6-D



Parts marked with a letter in column "Set" can be ordered as a set with Itemnumber

Set	Description	Itemnumber
a	Shearblade set	407989
-	Service kit	408658
-	Tip (repair)	408665
-	Connection kit open/close 38S	408496
-	N.A, fitting kit (JIC)	406403

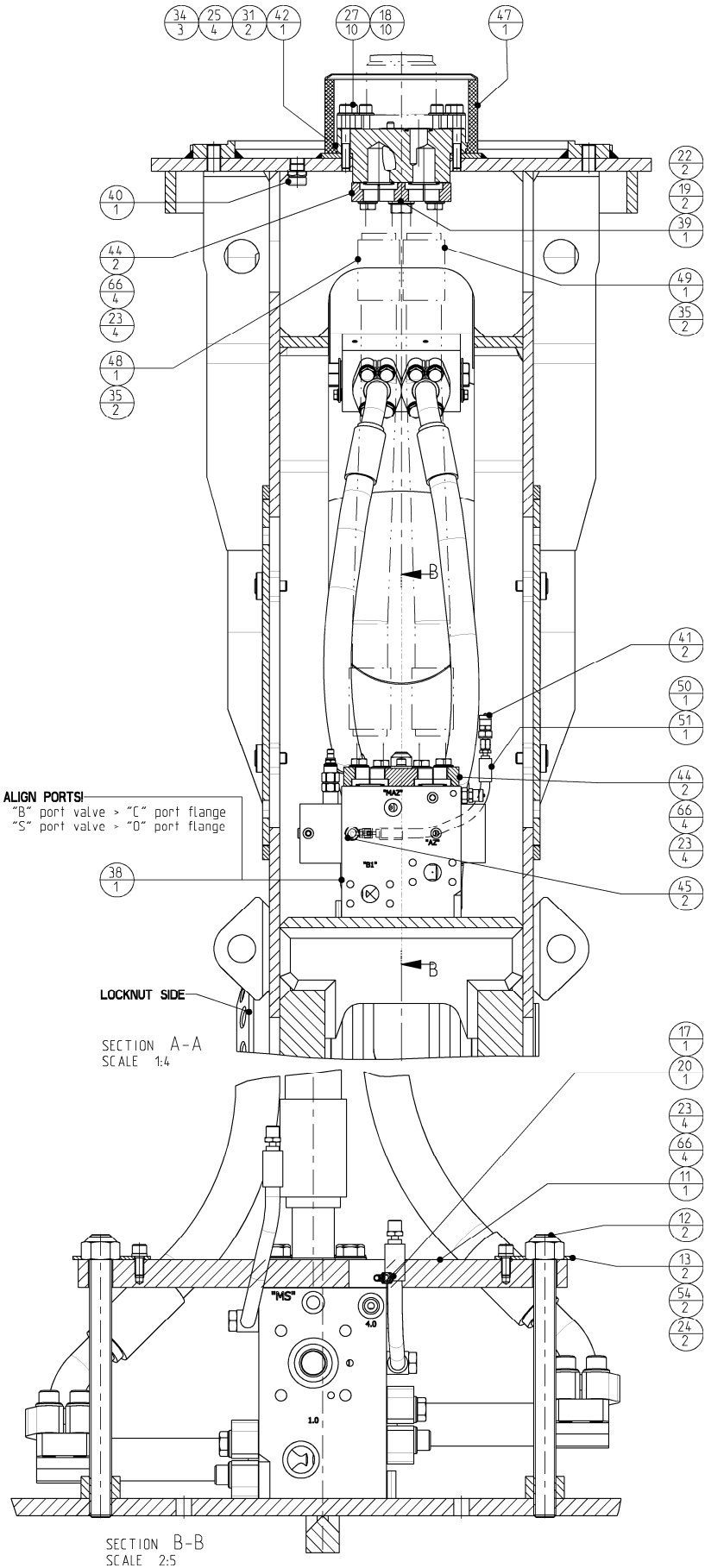
### Remark:

For the order of (dis)assembling and adjusting jaw and blades see user manual.

# Concrete Crusher

Page	<b>2</b>	of	<b>36</b>
Date	<b>March 2021</b>		
Product type	<b>DCC-40-A</b>		
Number	<b>DCC040A135AAB6-D</b>		

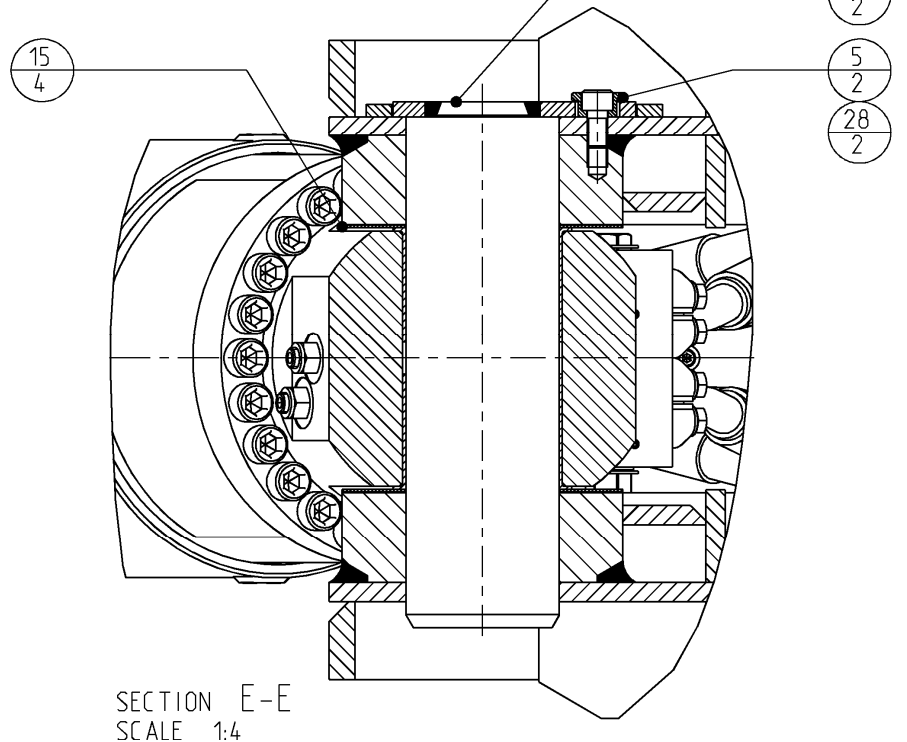
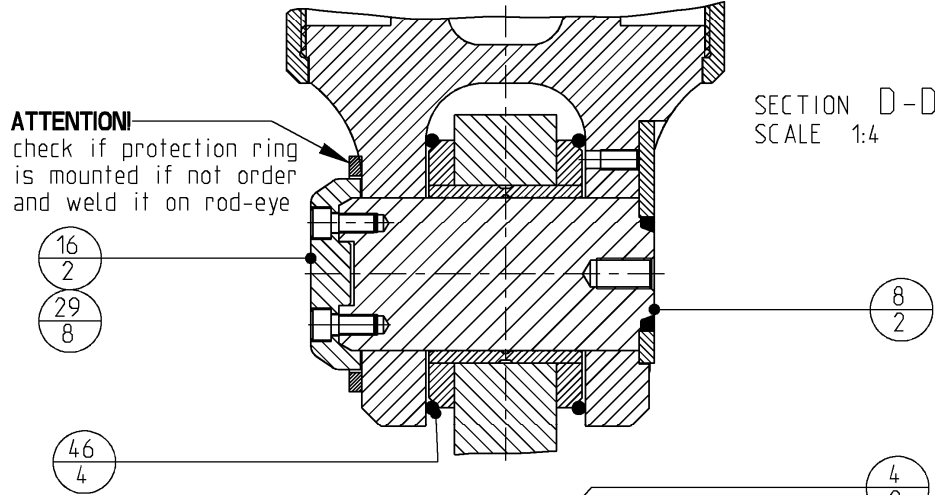
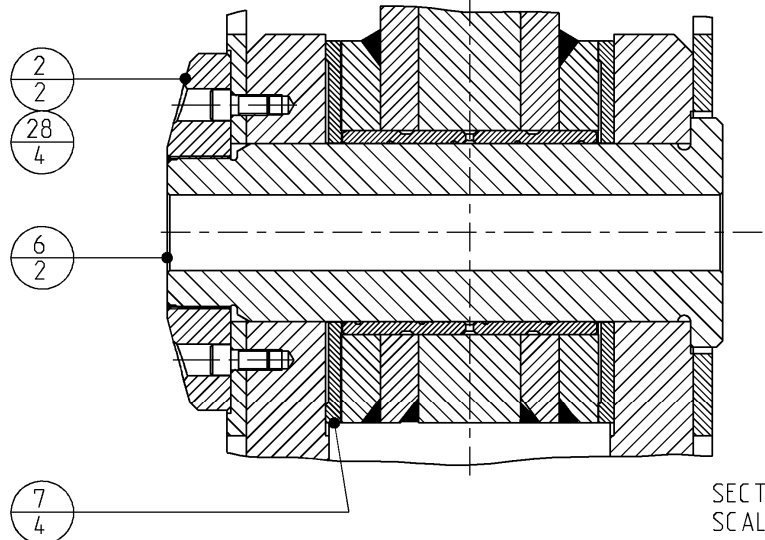
## Housing GP



# Concrete Crusher

Page	3	of	36
Date	March 2021		
Product type	DCC-40-A		
Number	DCC040A135AAB6-D		

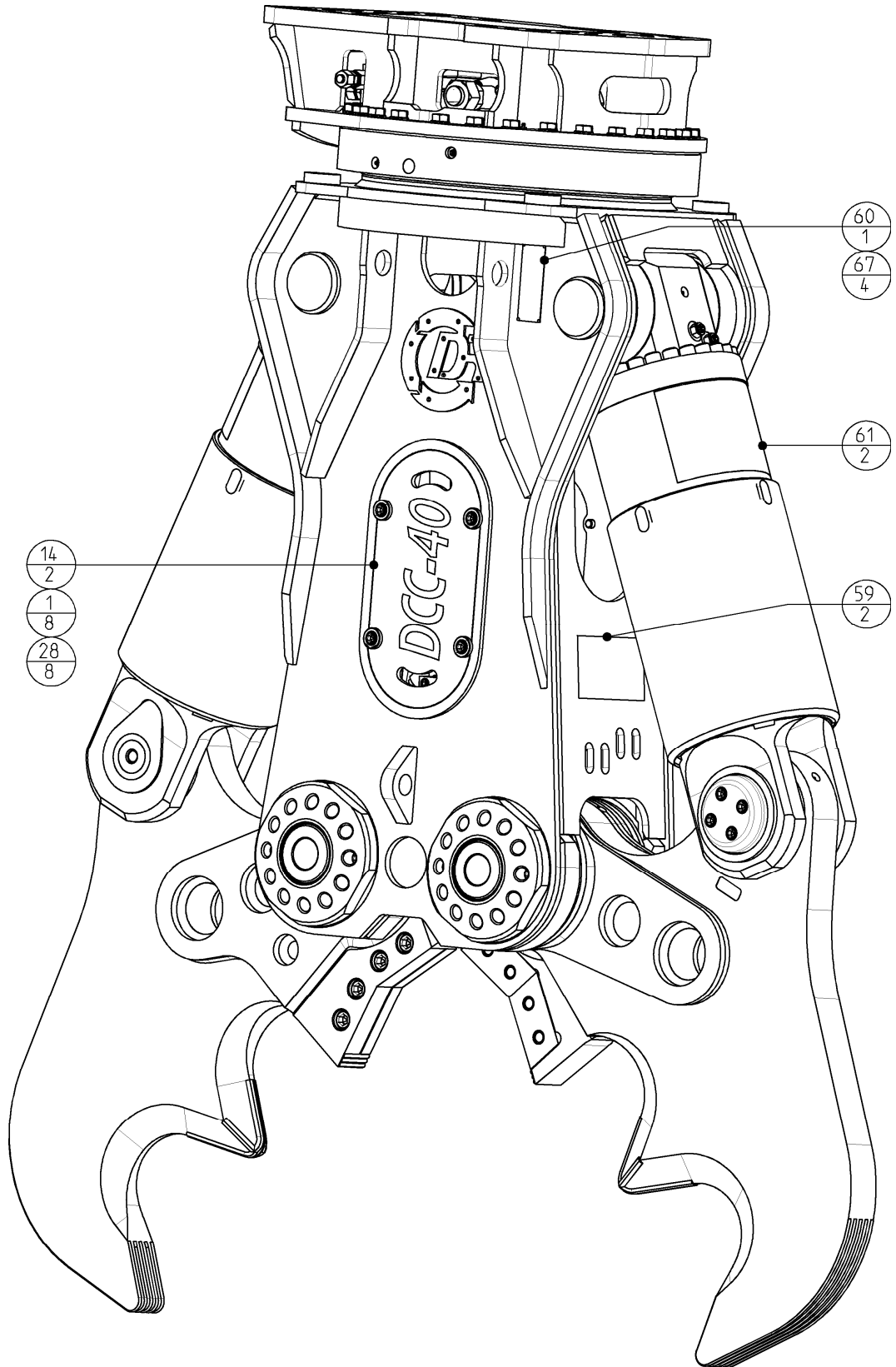
## Housing GP



# Concrete Crusher

Page	<b>4</b>	of	<b>36</b>
Date	<b>March 2021</b>		
Product type	<b>DCC-40-A</b>		
Number	<b>DCC040A135AAB6-D</b>		

## Housing GP



<b>Concrete Crusher</b>	Page	<b>5</b>	of	<b>36</b>
	Date	<b>March 2021</b>		
	Product type	<b>DCC-40-A</b>		
<b>Housing GP</b>	Number	<b>DCC040A135AAB6-D</b>		

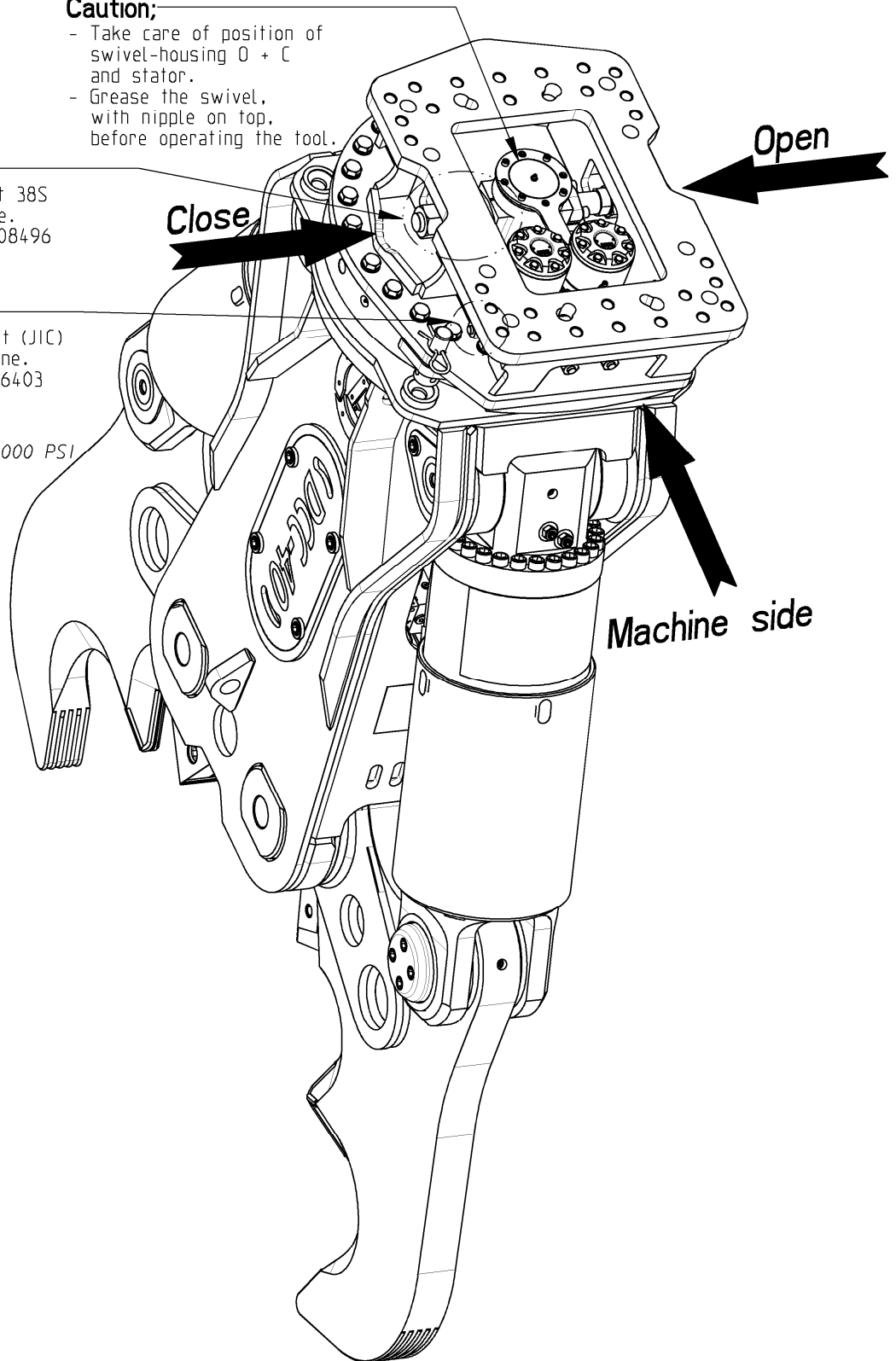
**Caution;**

- Take care of position of swivel-housing O + C and stator.
- Grease the swivel, with nipple on top, before operating the tool.

**Optional;**  
 Connection kit 38S  
 for open/close.  
 Fitting kit: 408496

**Optional;**  
 N.A. fitting kit (JIC)  
 for rotation line.  
 Fitting kit: 406403

**Open/Close**  
 - SAE 1-1/4" 6000 PSI  
 - Both sides



<b>Concrete Crusher</b>	Page	<b>6</b>	of	<b>36</b>
	Date	<b>March 2021</b>		
	Product type	<b>DCC-40-A</b>		
<b>Housing GP</b>	Number	<b>DCC040A135AAB6-D</b>		

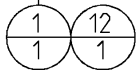
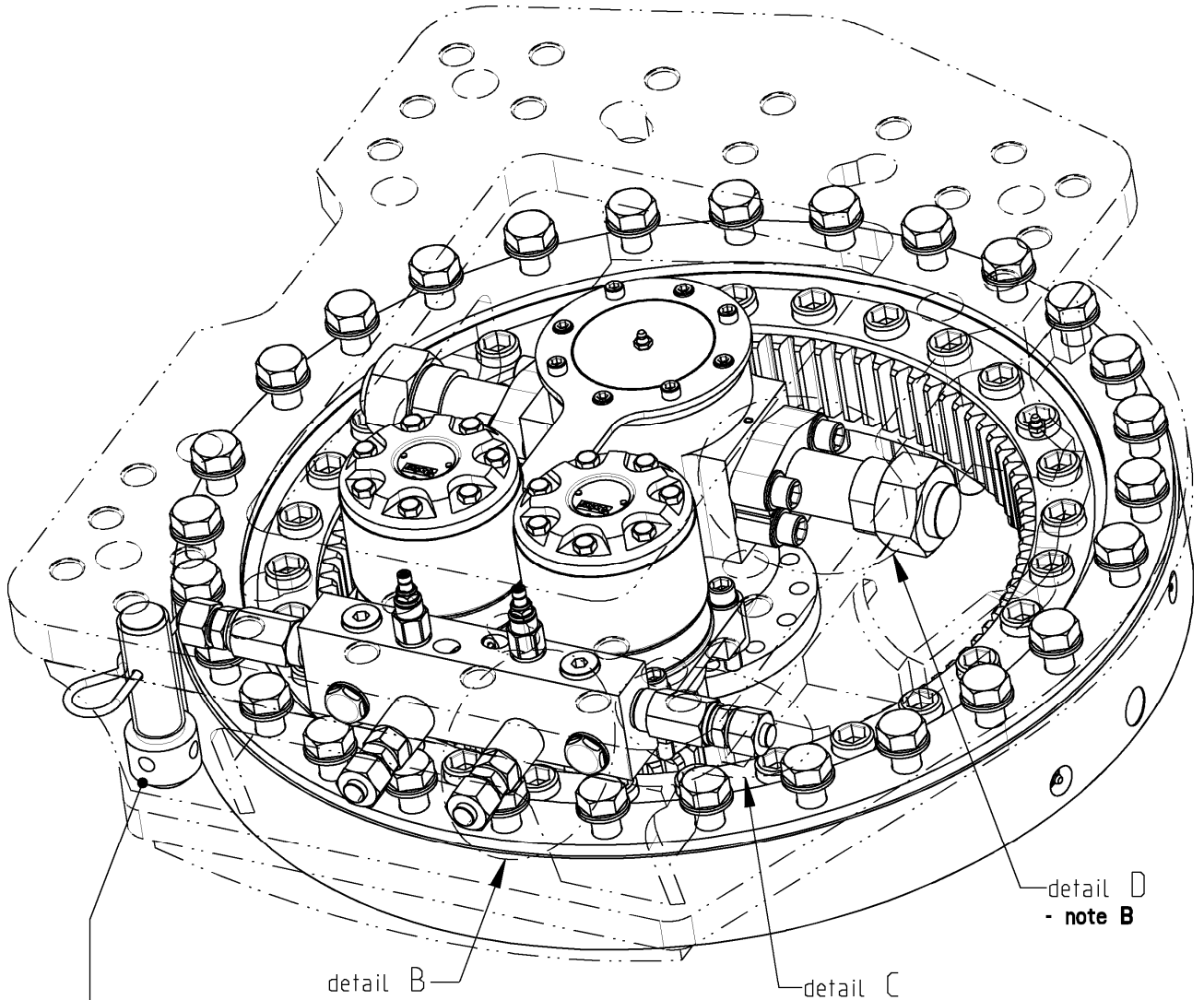
--	--	--	--	--	--	--	--	--

	67	130059276	Screw - drive	4		33	500600	Seal - flange	2
	66	122000163	Washer normal	12		32	500560	Grease - nipple	6
a	65	508205	Shim - diamond	4		31	500540	Springtype straight pin	2
a	64	508204	Shim - diamond	4	a	30	500281	Hex. socket head cap screw	8
a	63	508203	Shim - diamond	8		29	500259	Hex. socket head cap screw	8
a	62	508202	Shearblade - diamond	4		28	500258	Hex. socket head cap screw	14
	61	508162_R160	Sticker	2		27	500254	Hex. socket head cap screw	10
	60	508115	Type plate	1		26	500250	Hex. socket head cap screw	24
	59	508113	Sticker	2		25	500224	Hex. socket head cap screw	4
	58	507481	Flange pipe 1" 6000 PSI	4		24	500222	Hex. socket head cap screw	2
	57	507052	Bushing	2		23	500205	Bolts Hexagon	12
	56	507010	Bushing	2		22	500160	Bolts Hexagon	2
	55	506084	Bolts Hexagon	16		21	500134	Bolts Hexagon	8
	54	506073	Lockwasher - Nordlock	2		20	500097	Bolts Hexagon	1
	53	505285_RM_DCC40	Hydr.Hose asm. 1" SAE 100R15	2		19	500055	Washer HV	2
	52	505284_RM_DCC40	Hydr.Hose asm. 1" SAE 100R15	2		18	500053	Washer HV	58
	51	505236_DCC40-2	Hydr. hose asm. 1/4" SAE 100R2AT	1		17	500001	Nut Hexagon	1
	50	505236_DCC40-1	Hydr. hose asm. 3/16" SAE 100R2AT	1		16	409672	Endcap - pin Ø120 spec.	2
	49	505220_RM_DCC40-2	Hydr.hose asm. 1 1/4" SAE100R15	1		15	408702	Shim	4
	48	505220_RM_DCC40-1	Hydr.hose asm. 1 1/4" SAE100R15	1		14	408670	Cover Small DCC	2
	47	504216	Tube + V-ring	1		13	408483	Lockplate	2
	46	504186	O-ring	4		12	408481	Bolt asm.	2
	45	503612	Banjo Coupling	2		11	408480	Lockplate - valve	1
	44	503504	SAE split flange	4		10	407980	Jaw machined	2
	43	503503	SAE split flange	24		9	407960	Housing machined	1
	42	501997	Base flange - DCC/DXS	1		8	407819	Pin asm.	2
	41	501936	Test-point	2		7	407798	Spacer	4
	40	501935	Plug - breather	1		6	407792	Pin	2
	39	501927	SAE split flange - double	1		5	407787	Lock bushing	2
	38	501890	Speed valve GP	1		4	407777	Pin asm.	2
	37	501860	Hydraulic Cylinder GP	2		3	407650	Rotatorhead GP	1
	36	501795	Valve GP	2		2	405244	Locknut	2
	35	500603	Seal - flange	4		1	405104	Lock bushing	8
	34	500601	Seal - flange	19	<b>Set</b>	<b>POS</b>	<b>PARTNUMBER</b>	<b>PARTNAME</b>	<b>QT</b>

# Concrete Crusher

Page	<b>7</b>	of	<b>36</b>
Date	<b>March 2021</b>		
Product type	<b>DCC-40-A</b>		
Number	<b>407650-03</b>		

## Rotatorhead GP



**Note A**  
Mount with Cyberbound TT62 according instruction at the end of this partsbook.

**Note B**  
Optional 38S kit, for open/close.  
Fitting kit: 408496

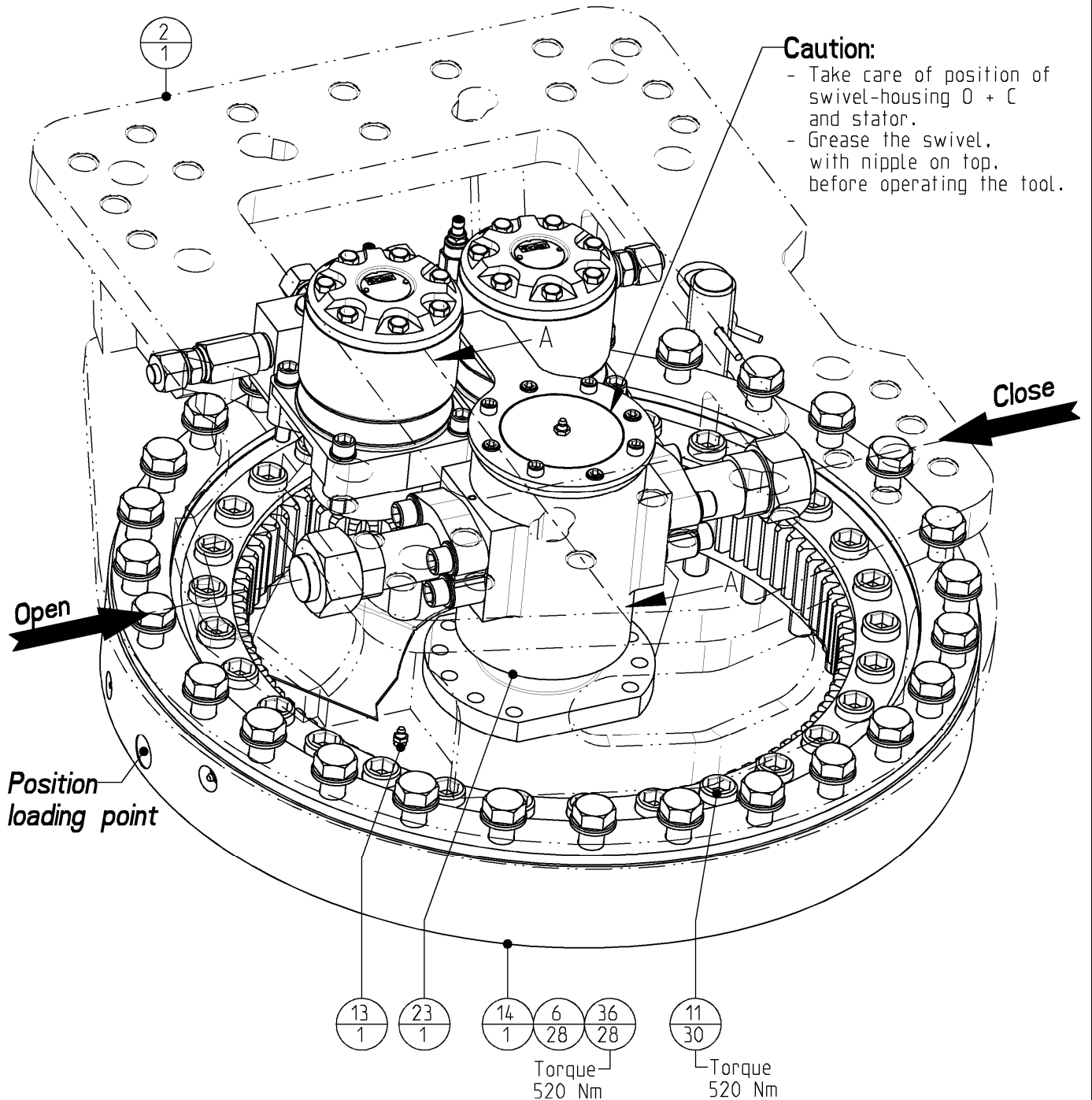
**Note C**  
Optional N.A. fitting kit (JIC)  
Fitting kit: 406403



# Concrete Crusher

Page	8	of	36
Date	March 2021		
Product type	DCC-40-A		
Number	407650-03		

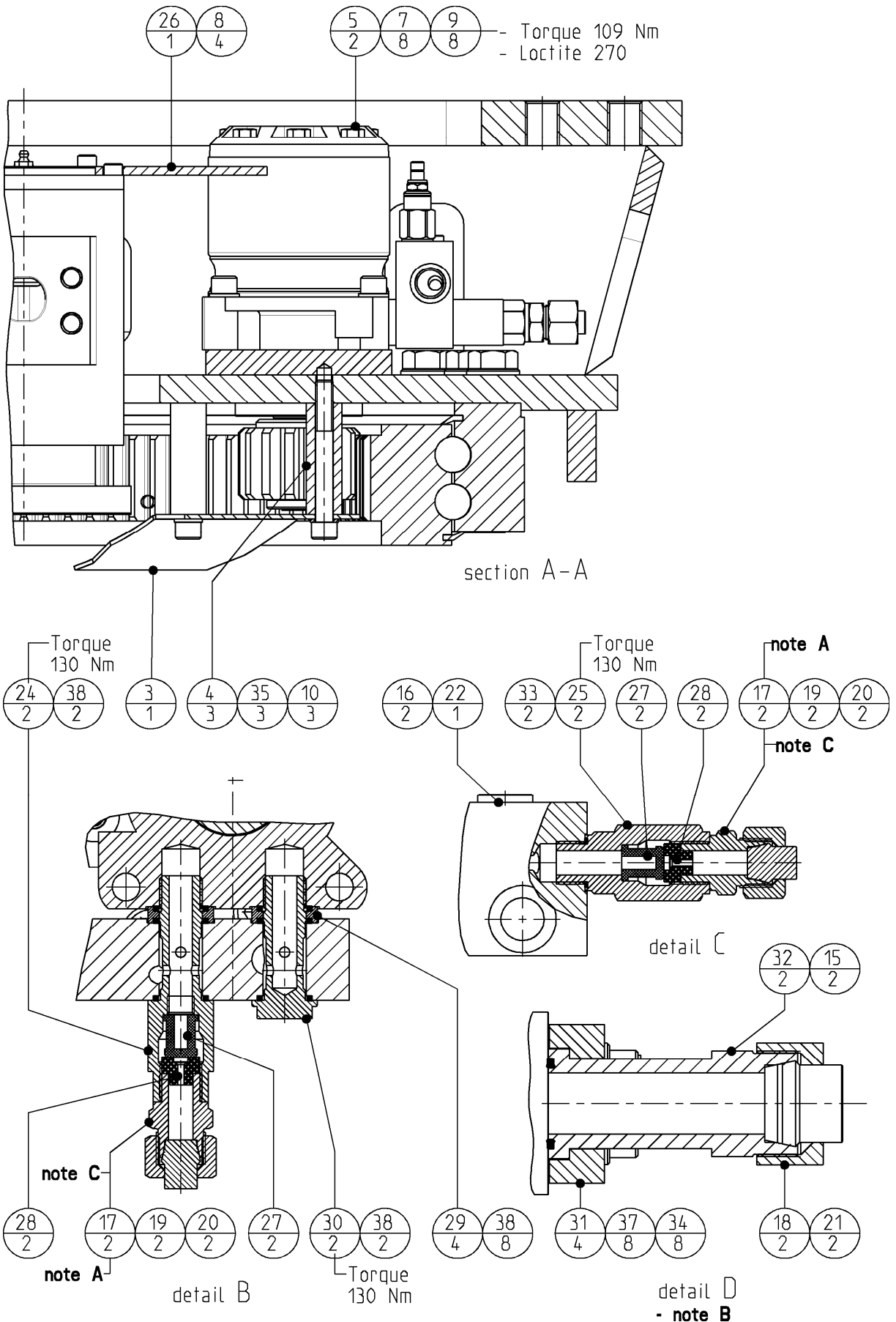
## Rotatorhead GP



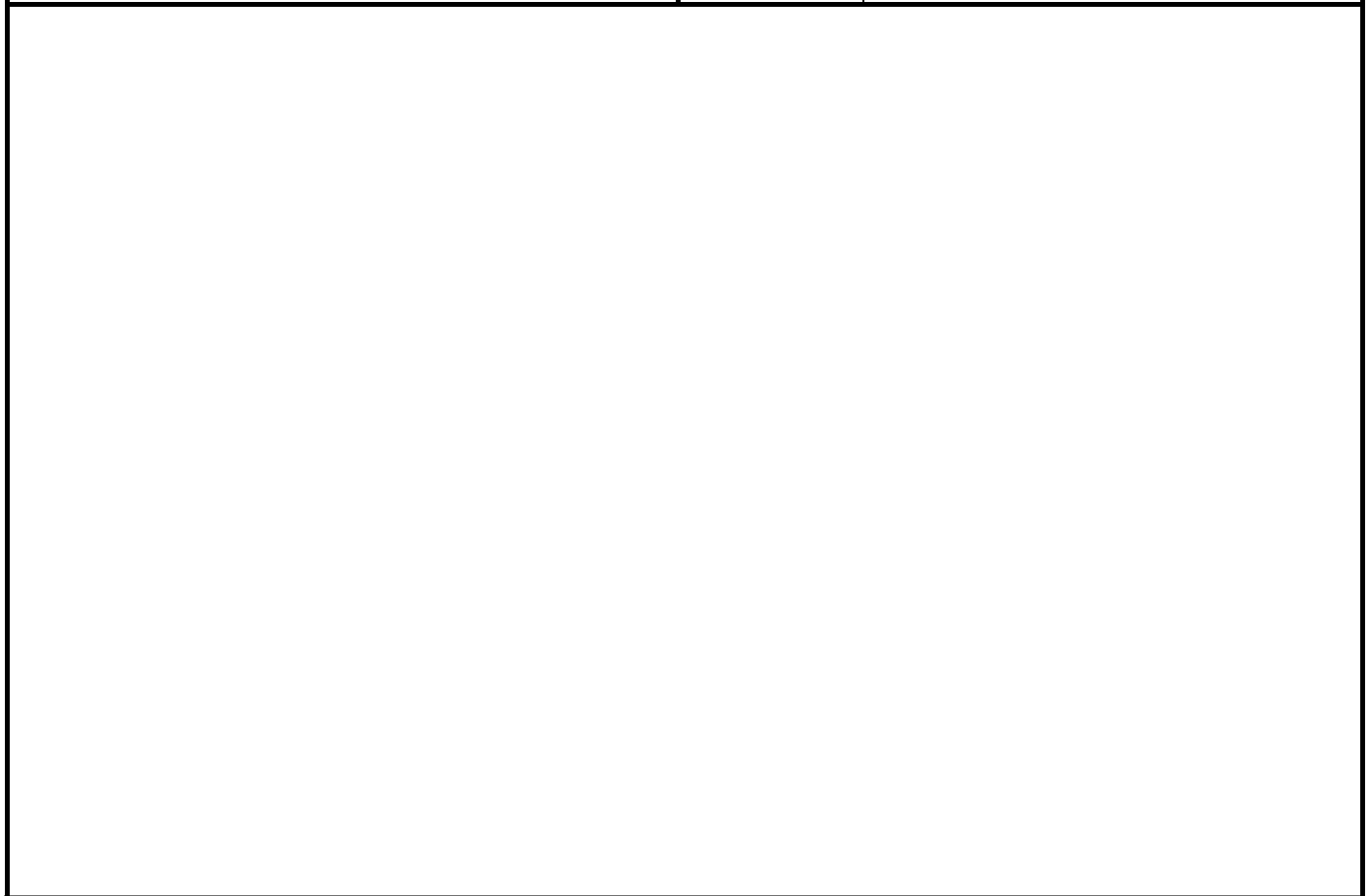
# Concrete Crusher

Page	<b>9</b>	of	<b>36</b>
Date	<b>March 2021</b>		
Product type	<b>DCC-40-A</b>		
Number	<b>407650-03</b>		

## Rotatorhead GP



<b>Concrete Crusher</b>	Page	<b>10</b>	of	<b>36</b>
	Date	<b>March 2021</b>		
	Product type	<b>DCC-40-A</b>		
<b>Rotatorhead GP</b>	Number	<b>407650-03</b>		

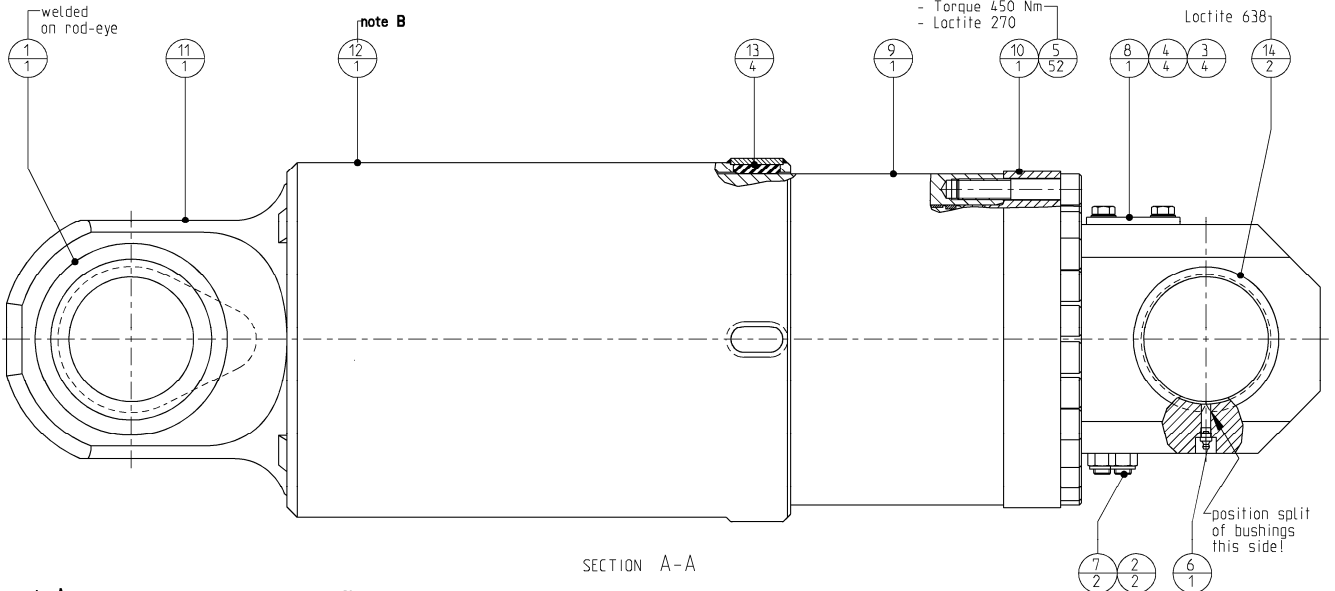
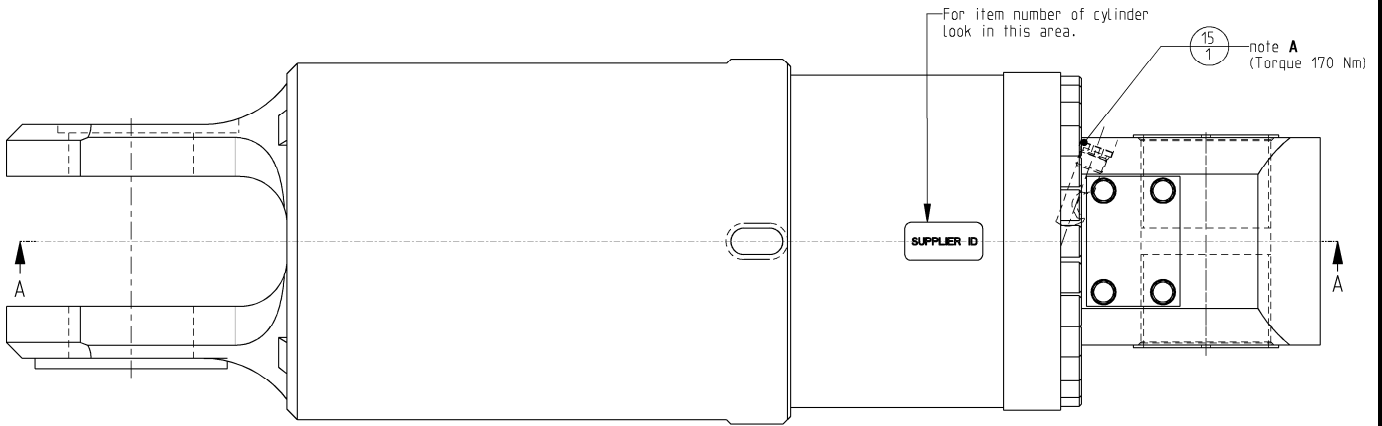


POS	PARTNUMBER	PARTNAME	QT
20	500945	Blanking plug	4
19	500940	Nut coupling	4
18	500930	Nut coupling	2
17	500693	Male stud coupling	4
16	500652	Blanking end	2
15	500603	Seal - flange	2
14	500591	Slewing Ring; Internal Gear	1
13	500560	Grease - nipple	1
12	500504-2	Locking pin (hair-pin)	1
11	500302	Hex. socket head cap screw	30
10	500256	Hex. socket head cap screw	3
9	500252	Hex. socket head cap screw	8
8	500224	Hex. socket head cap screw	4
7	500068	Washer spring	8
6	500055	Washer HV	28
5	407855	Motor GP	2
4	407666	Spacer sleeve	3
3	407665	Blade - greasing	1
2	407651	Rotatorhead asm. machined	1
1	400066	Lock - pin	1
38	257066194	Kantseal	12
37	122000163	Washer normal	8
36	120064293	Bolts Hexagon	28
35	506055	Lockwasher - Nordlock	3
34	506005	Hex. socket head cap screw	8
33	504038	Seal G1/2"	2
32	503912	SAE flange adapter XLong	2
31	503504	SAE split flange	4
30	502907	Banjo bolt	2
29	502903	Spacer	4
28	502001	Drossel - ring	4
27	502000	Filter	4
26	501938	Lock key - swivel	1
25	501923	Sleeve G1/2"-G1/2" + Filter	2
24	501922	Banjo bolt - filter	2
23	501900	Swivel GP	1
22	501733	Valve GP	1
21	500949	Blanking plug	2

# Concrete Crusher

Page	<b>11</b>	of	<b>36</b>
Date	<b>March 2021</b>		
Product type	<b>DCC-40-A</b>		
Number	<b>501860-08</b>		

## Cylinder GP



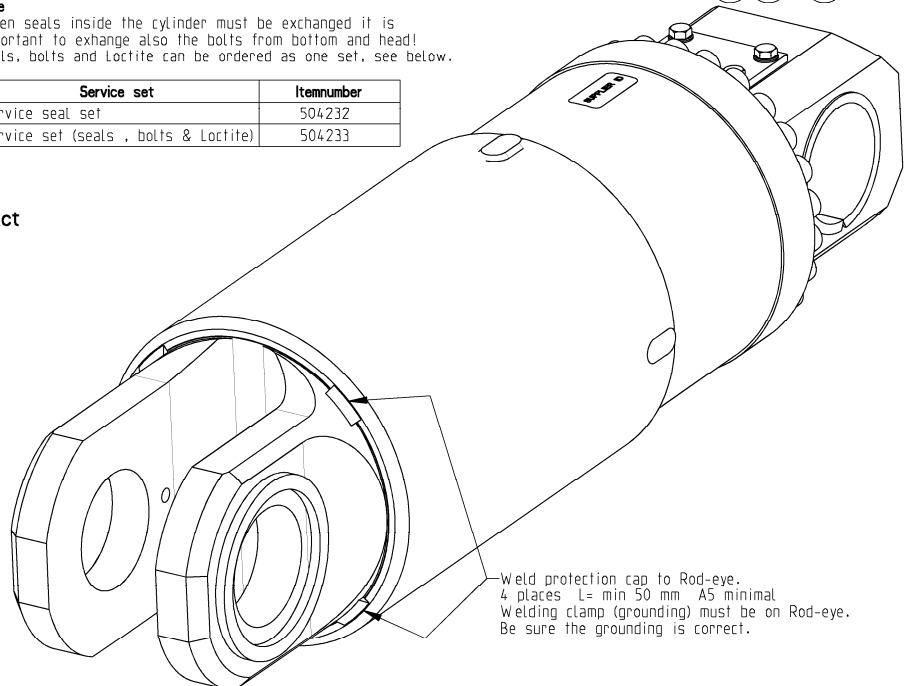
**note A:**  
Mount with cyberbound TT62 according instructions at the end of this partsbook.

**note B:**  
mounting order protection cap:  
- Lubricate thread with Loctite LB 8150  
- turn cap on the head of cylinder fully to the end, use cams to tighten  
- Drill and tap M12 hole 2x  
- Mount hex. socket set screw 2x

**Note**  
When seals inside the cylinder must be exchanged it is important to exchange also the bolts from bottom and head!  
Seals, bolts and Loctite can be ordered as one set, see below.

Service set	Itemnumber
Service seal set	504232
Service set (seals , bolts & Loctite)	504233

**For more detailed information contact your local dealer or Demarec.**



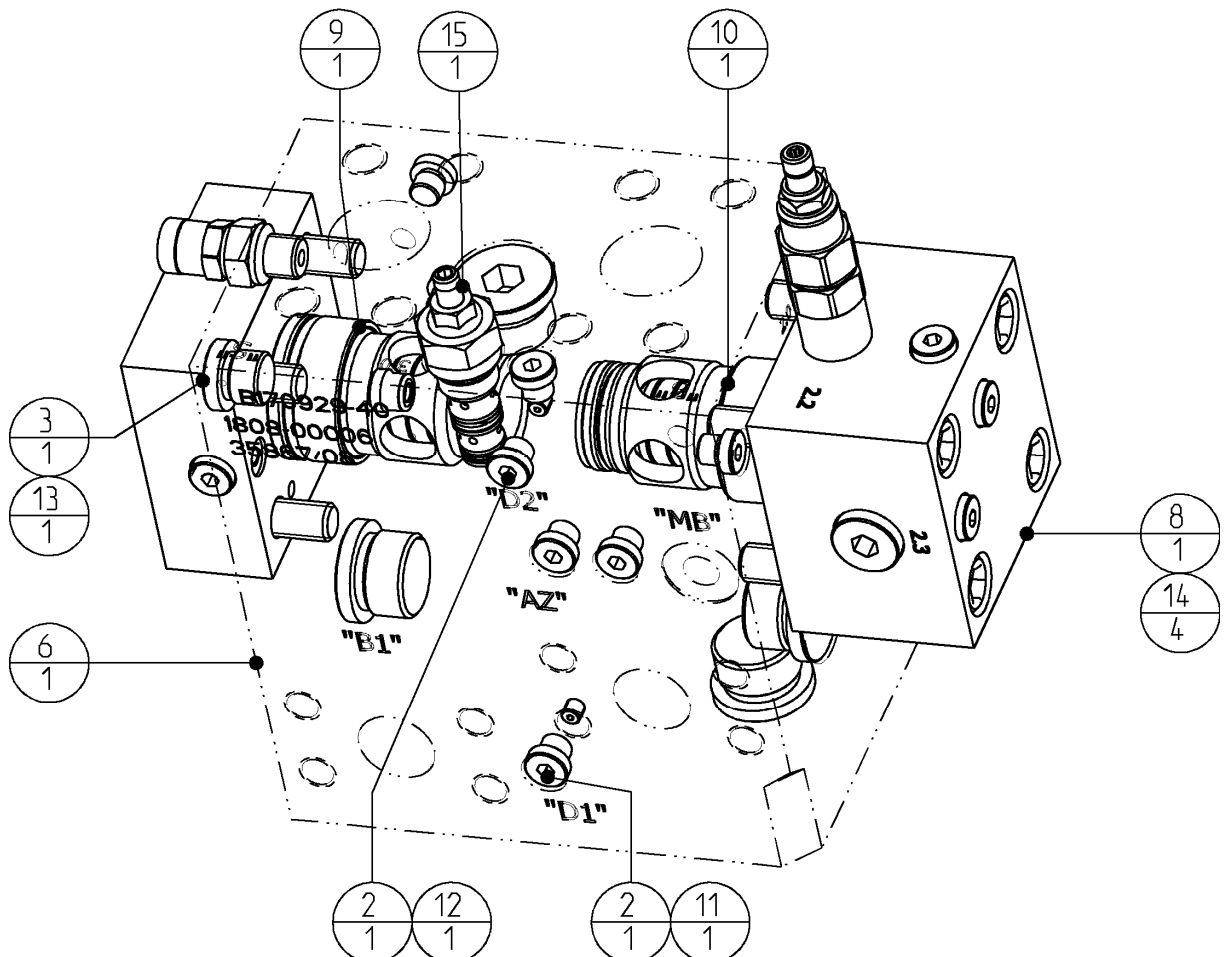
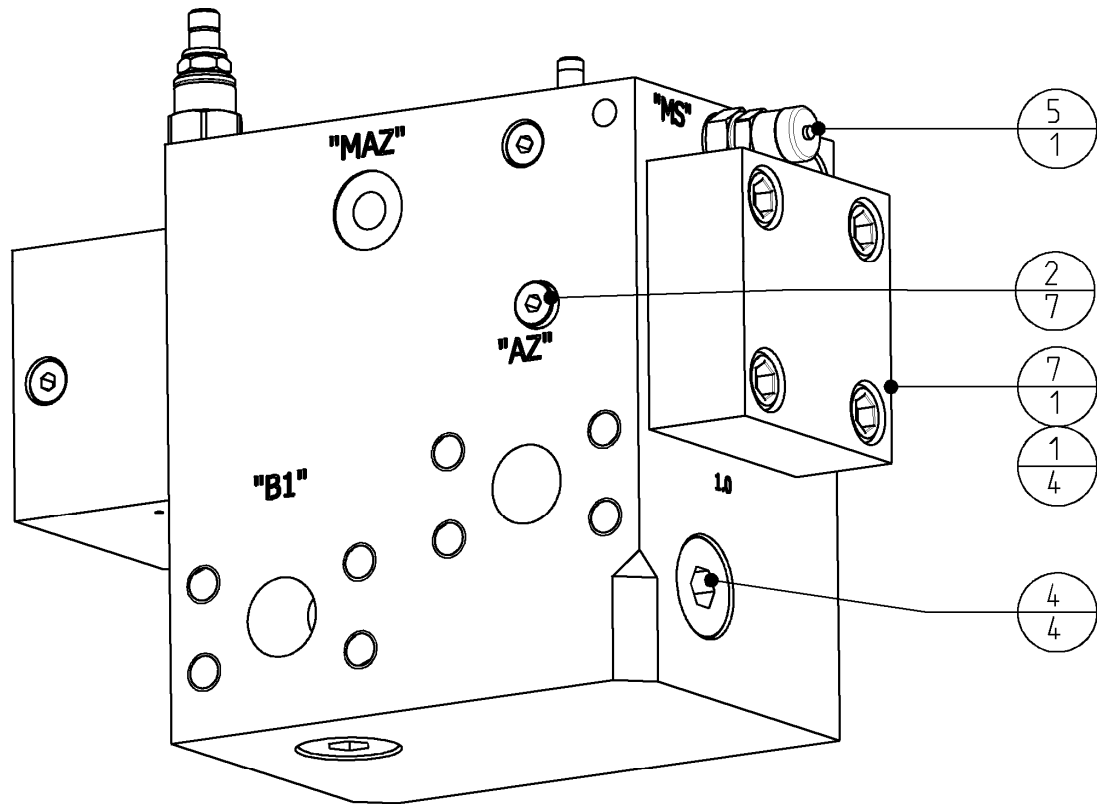
<b>Concrete Crusher</b>	<i>Page</i>	<b>12</b>	<i>of</i>	<b>36</b>
	<i>Date</i>	<b>March 2021</b>		
	<i>Product type</i>	<b>DCC-40-A</b>		
<b>Cylinder GP</b>	<i>Number</i>	<b>501860-08</b>		

15	290058185	Blanking end ISO 6149	1
14	507051	Bushing - collar	2
13	504224	Slide pad	4
12	501872	Protecion Cap asm.	1
11	501863	Rod GP	1
10	501862	Cylinder - bottom	1
9	501861	Tube - housing	1
8	501844	Blanking cover	1
7	501408	Bleeding screw GP	2
6	500560	Grease - nipple	1
5	500277	Hex. socket head cap screw	52
4	500131	Bolts Hexagon	4
3	500043	Washer normal	4
2	500031	Nut Hexagon self-locking	2
1	409664	Ring - protection	1
<b>POS</b>	<b>PARTNUMBER</b>	<b>PARTNAME</b>	<b>QT</b>

# Concrete Crusher

Page	13	of	36
Date	March 2021		
Product type	DCC-40-A		
Number	501890-02		

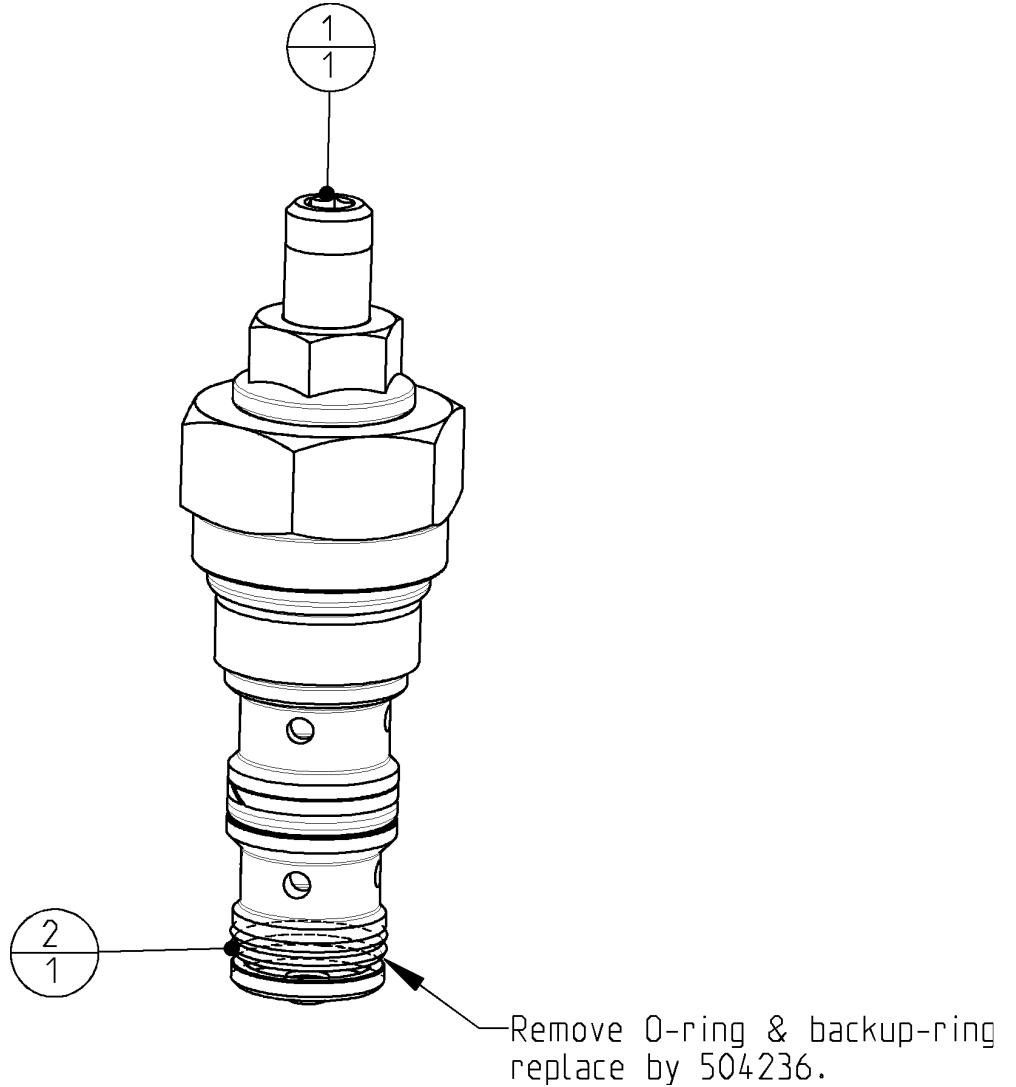
## Valve GP



<b>Concrete Crusher</b>	<i>Page</i>	<b>14</b>	<i>of</i>	<b>36</b>
	<i>Date</i>	<b>March 2021</b>		
	<i>Product type</i>	<b>DCC-40-A</b>		
<b>Valve GP</b>	<i>Number</i>	<b>501890-02</b>		

15	507391	Priority cartridge valve	1
14	506090	Hex. socket head cap screw	4
13	501934	Valve - non return	1
12	501929	Restrictor - plug	1
11	501928	Restrictor - plug	1
10	501897	Cartridge slip-in NG25	1
9	501896	Cartridge slip-in NG25	1
8	501894	Cover GP	1
7	501892	Cover GP	1
6	501891	Valve - housing	1
5	500740	Test-point	1
4	500653	Blanking end	4
3	500651	Blanking end	1
2	500649	Blanking end	9
1	500249	Hex. socket head cap screw	4
<b>POS</b>	<b>PARTNUMBER</b>	<b>PARTNAME</b>	<b>QT</b>

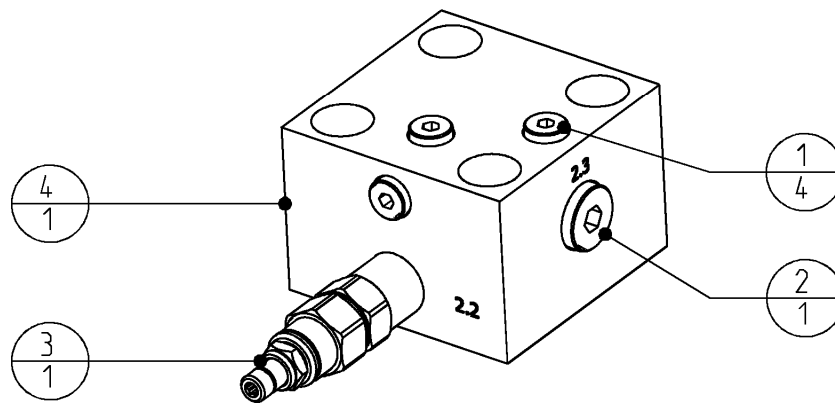
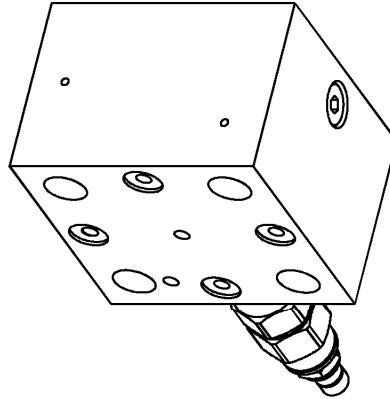
<b>Concrete Crusher</b>	Page	<b>15</b>	of	<b>36</b>
	Date	<b>March 2021</b>		
	Product type	<b>DCC-40-A</b>		
<b>Cartridge – priority valve</b>	Number	<b>507391-00</b>		



2	504236	Static seal	1
1	501538_REBUILD	Priority cartridge valve	1
<b>POS</b>	<b>PARTNUMBER</b>	<b>PARTNAME</b>	<b>QT</b>

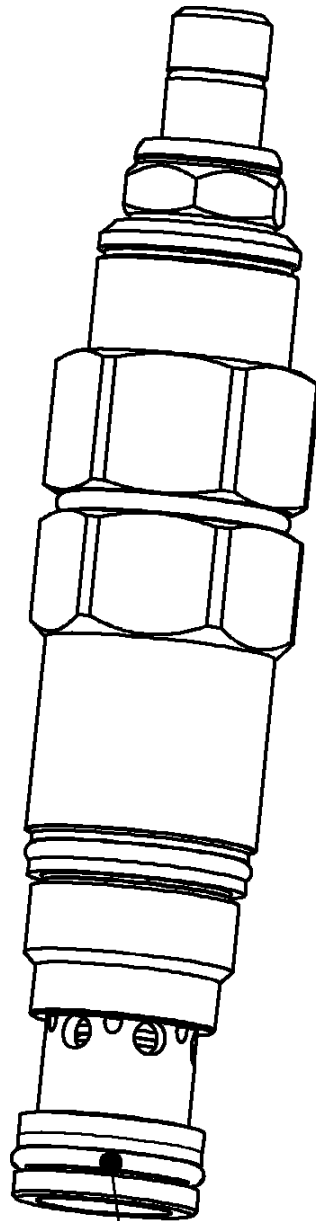


<b>Concrete Crusher</b>	Page	<b>16</b>	of	<b>36</b>
	Date	<b>March 2021</b>		
	Product type	<b>DCC-40-A</b>		
<b>Cover GP</b>	Number	<b>501894-00</b>		



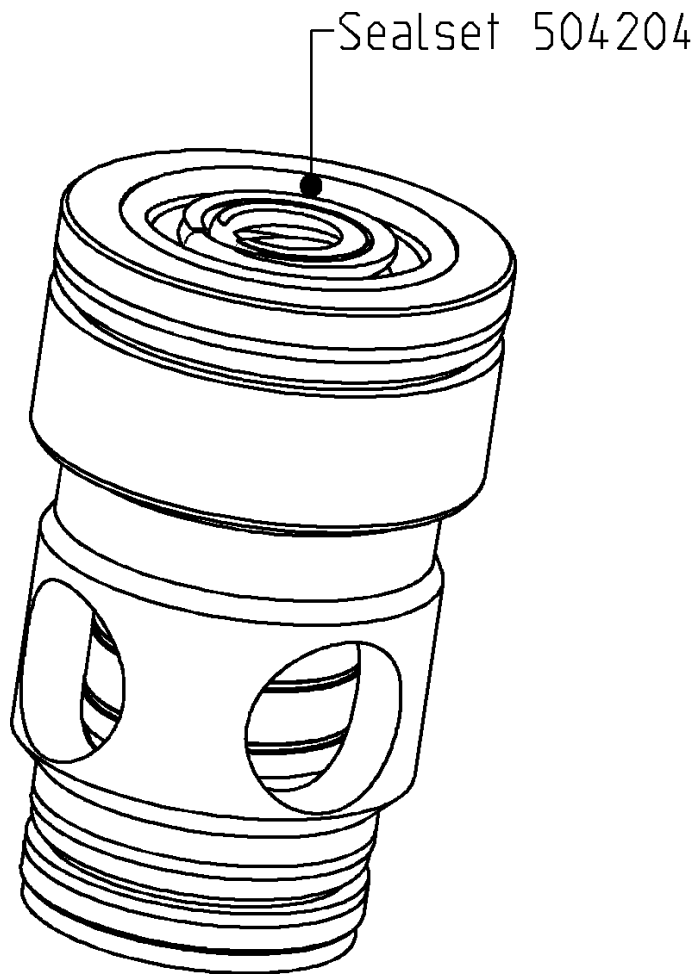
4	501895	Cover	1
3	501537	Cartridge - sequence valve	1
2	500651	Blanking end	1
1	500649	Blanking end	4
<b>POS</b>	<b>PARTNUMBER</b>	<b>PARTNAME</b>	<b>QT</b>

<b>Concrete Crusher</b>	<i>Page</i>	<b>17</b>	<i>of</i>	<b>36</b>
	<i>Date</i>	<b>March 2021</b>		
	<i>Product type</i>	<b>DCC-40-A</b>		
<b>Cartridge - sequence valve</b>	<i>Number</i>	<b>501537-00</b>		

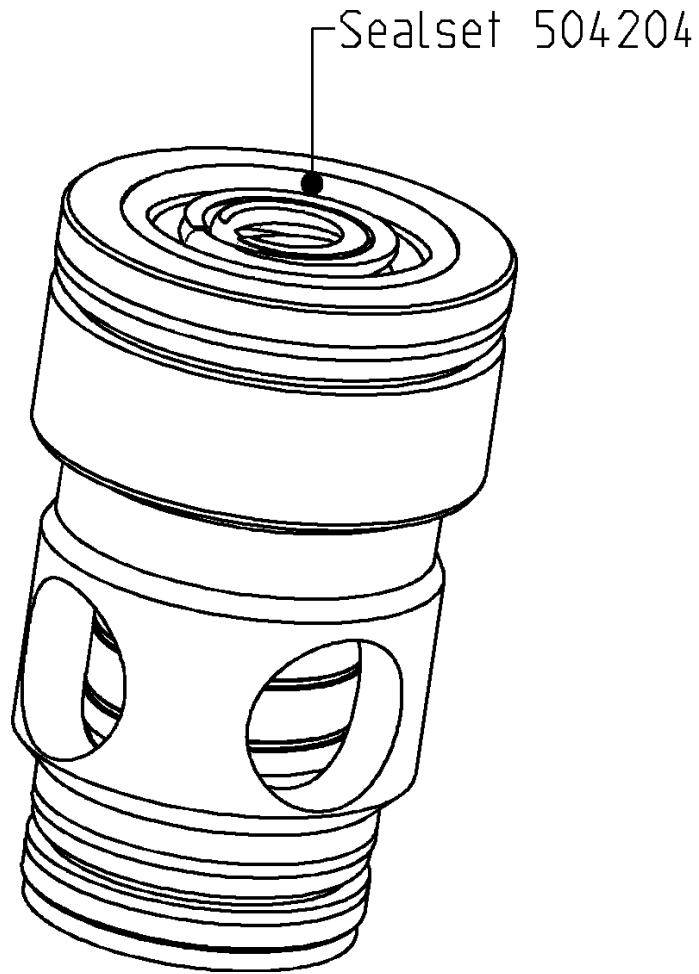


— Sealset 504203

<b>Concrete Crusher</b>	<i>Page</i>	<b>18</b>	<i>of</i>	<b>36</b>
	<i>Date</i>	<b>March 2021</b>		
	<i>Product type</i>	<b>DCC-40-A</b>		
<b>Cartridge - slip-in valve</b>	<i>Number</i>	<b>501896-00</b>		



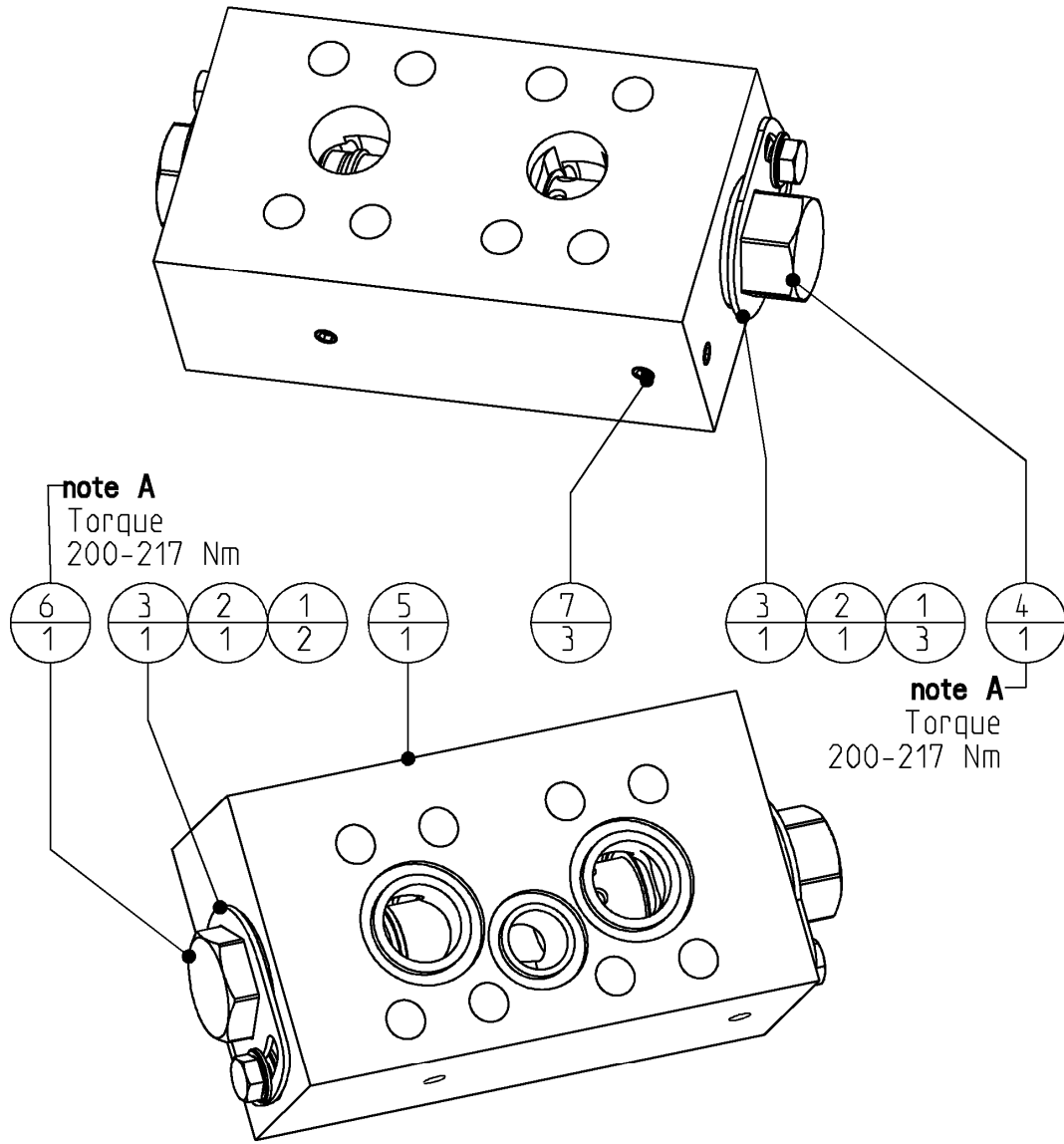
<b>Concrete Crusher</b>	<i>Page</i>	<b>19</b>	<i>of</i>	<b>36</b>
	<i>Date</i>	<b>March 2021</b>		
	<i>Product type</i>	<b>DCC-40-A</b>		
<b>Cartridge - slip-in valve</b>	<i>Number</i>	<b>501897-00</b>		



# Concrete Crusher

Page	<b>20</b>	of	<b>36</b>
Date	<b>March 2021</b>		
Product type	<b>DCC-40-A</b>		
Number	<b>501795-01</b>		

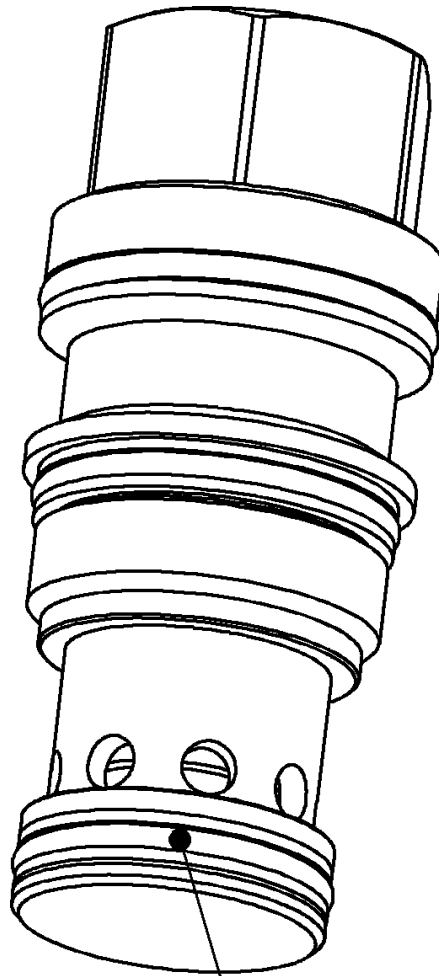
## DemaPower valve GP



**note A:**  
Mount with cyberbound TT62 according instruction at the end of the partsbook.

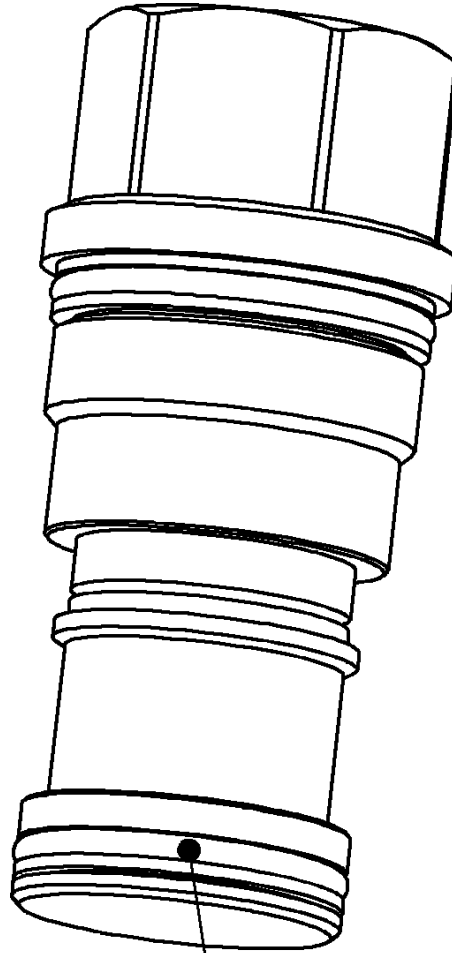
7	502132	Hex.socket plug-tapered	3
6	502117	Cartridge - check valve	1
5	501796	Valve - housing	1
4	501378	Cartridge - check valve	1
3	501347	Lockplate Key 32	2
2	500103	Bolts Hexagon	2
1	500041	Washer normal	5
<b>POS</b>	<b>PARTNUMBER</b>	<b>PARTNAME</b>	<b>QT</b>

<b>Concrete Crusher</b>	<i>Page</i>	<b>21</b>	<i>of</i>	<b>36</b>
	<i>Date</i>	<b>March 2021</b>		
	<i>Product type</i>	<b>DCC-40-A</b>		
<b>Cartridge – check valve</b>	<i>Number</i>	<b>501378-02</b>		



Sealset 504024

<b>Concrete Crusher</b>	<i>Page</i>	<b>22</b>	<i>of</i>	<b>36</b>
	<i>Date</i>	<b>March 2021</b>		
	<i>Product type</i>	<b>DCC-40-A</b>		
<b>Cartridge – check valve</b>	<i>Number</i>	<b>502117-02</b>		

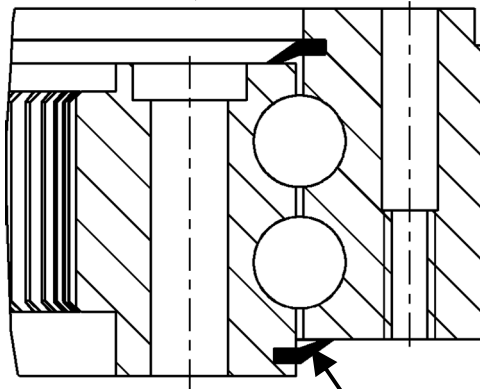
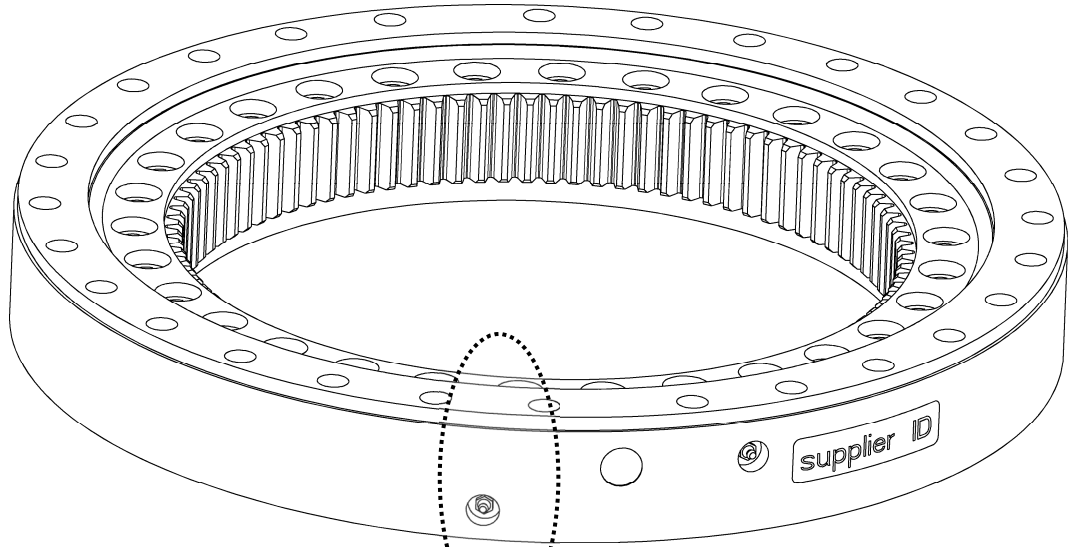


Sealset 504024

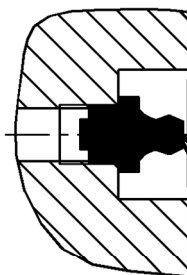
# Concrete Crusher

Page	<b>23</b>	of	<b>36</b>
Date	<b>March 2021</b>		
Product type	<b>DCC-40-A</b>		
Number	<b>500591-01</b>		

## Slewing ring



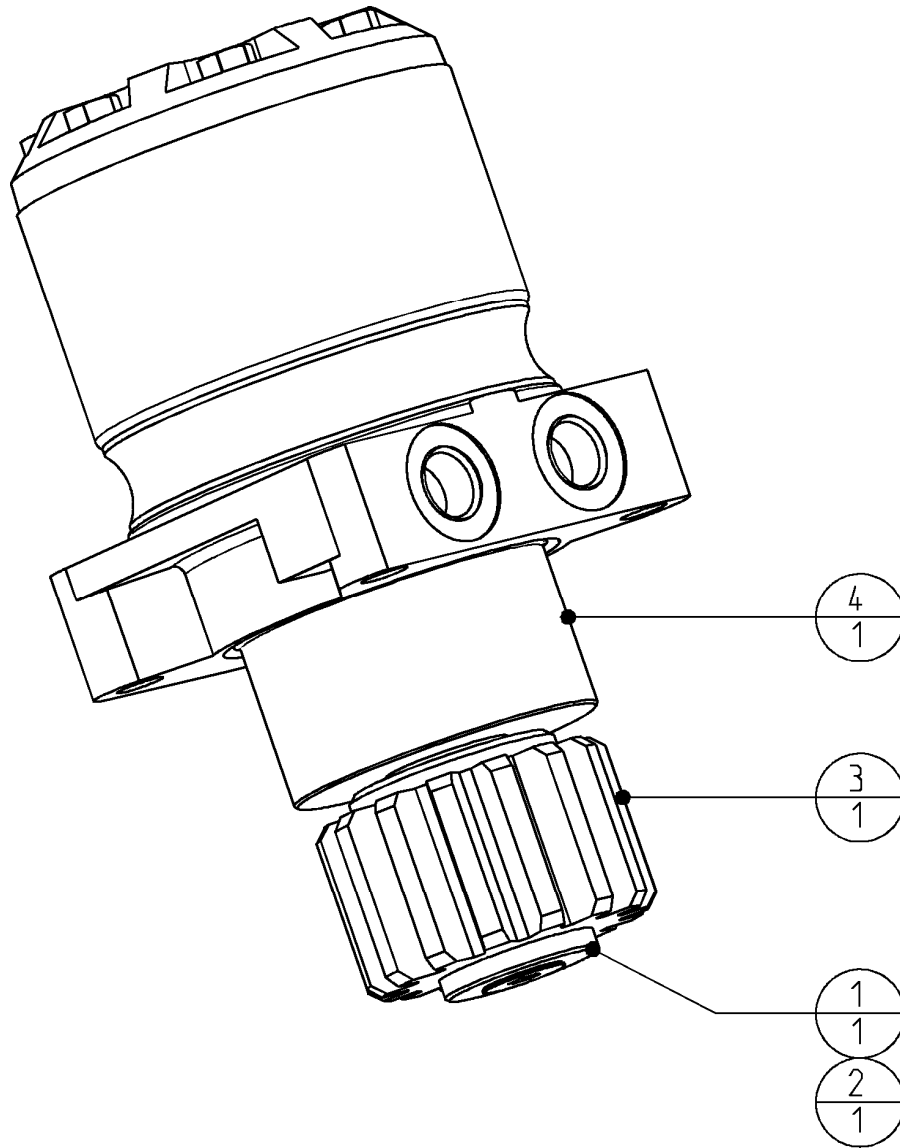
**2x seal 256060900  
mount with Loctite 480**



**2x grease nipple  
500560**



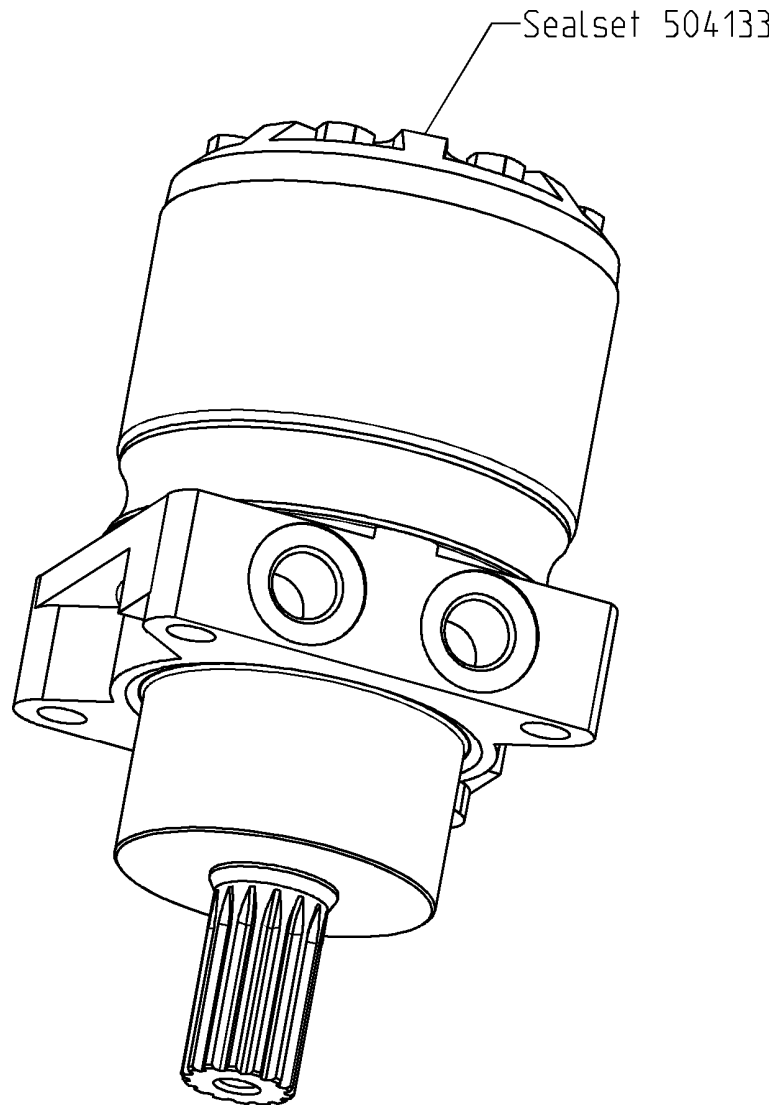
<b>Concrete Crusher</b>	Page	<b>24</b>	of	<b>36</b>
	Date	<b>March 2021</b>		
	Product type	<b>DCC-40-A</b>		
<b>Hydraulic motor GP</b>	Number	<b>407855-02</b>		



Loctite 638

4	501801	Hydraulic motor	1
3	501099	Pinion	1
2	500347	Flat countersunk head cap screws	1
1	407692	Washer	1
<b>POS</b>	<b>PARTNUMBER</b>	<b>PARTNAME</b>	<b>QT</b>

<b>Concrete Crusher</b>	<i>Page</i>	<b>25</b>	<i>of</i>	<b>36</b>
	<i>Date</i>	<b>March 2021</b>		
	<i>Product type</i>	<b>DCC-40-A</b>		
<b>Hydraulic motor</b>	<i>Number</i>	<b>501801-00</b>		



# Concrete Crusher

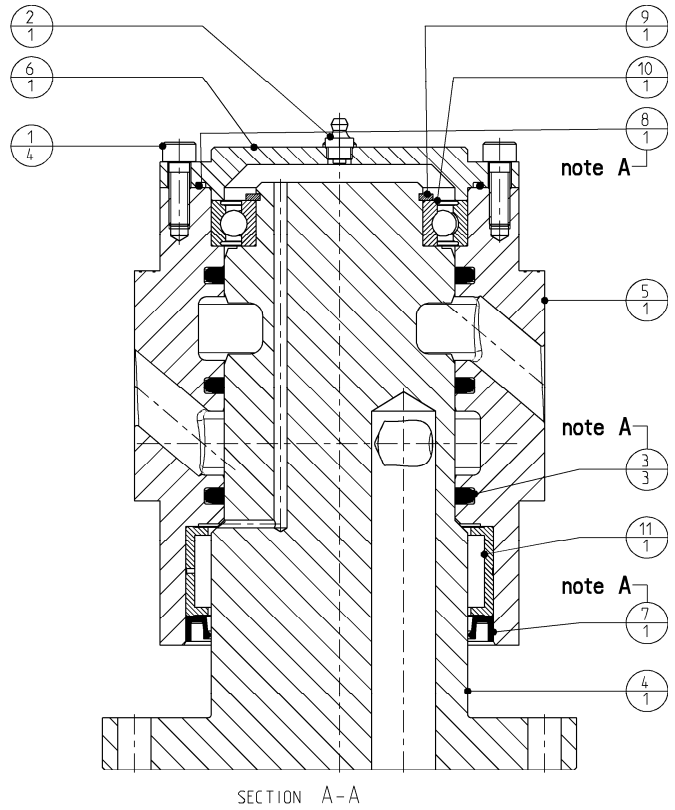
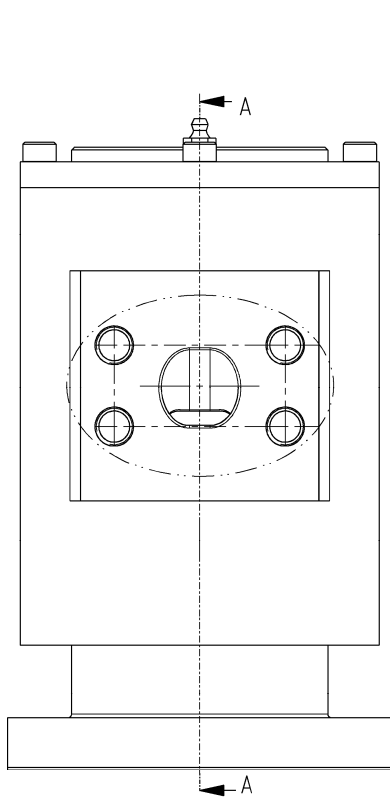
Page **26** of **36**

Date **March 2021**

Product type **DCC-40-A**

## Swivel GP

Number **501900-02**

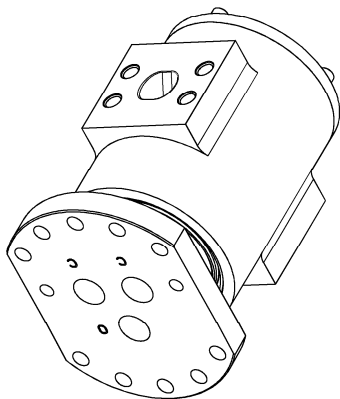
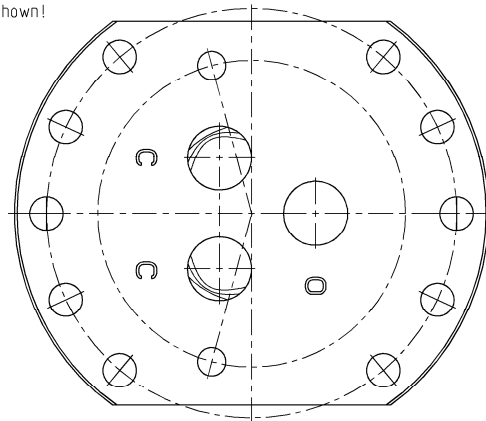
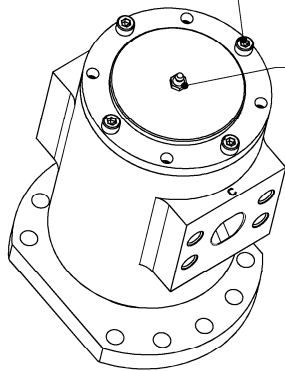


**Note A:**

Part of sealset 504199

Mount bolts on positions as shown!

Grease complete swivel after assembling!

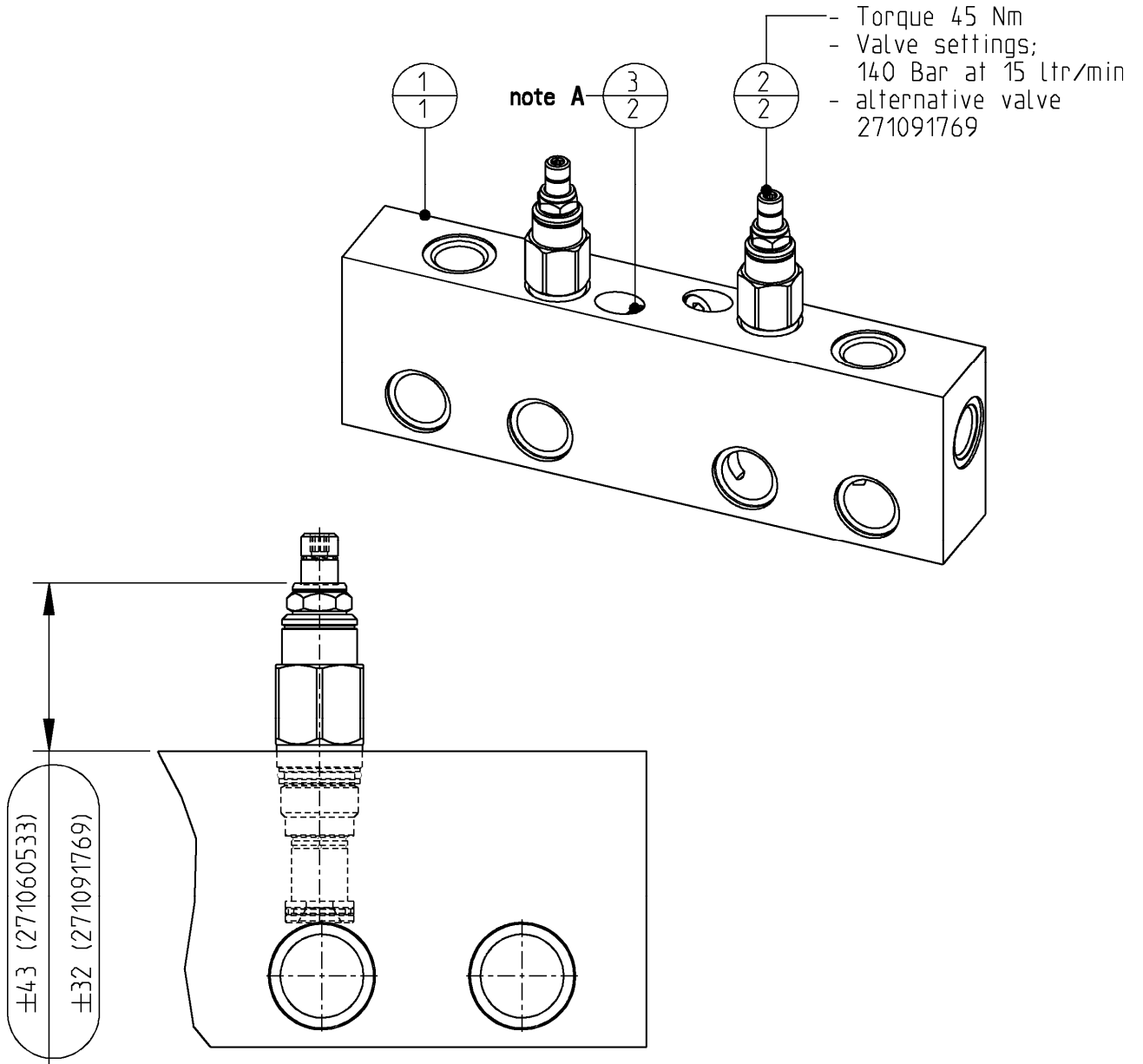


11	507055	Bearing needle	1
10	507054	Ball bearing	1
9	506085	Retainingring	1
8	504192	O-ring	1
7	504191	Radial Oil Seal	1
6	501903	Cover	1
5	501902	Housing	1
4	501901	Stator	1
3	500630	Roto seal $\varnothing 90 \times \varnothing 105,5 \times 6,3$	3
2	500560	Grease - nipple	1
1	500223	Hex. socket head cap screw	4
<b>POS</b>	<b>PARTNUMBER</b>	<b>PARTNAME</b>	<b>QT</b>

# Concrete Crusher

Page	<b>27</b>	of	<b>36</b>
Date	<b>March 2021</b>		
Product type	<b>DCC-40-A</b>		
Number	<b>501733-01</b>		

## Valve GP

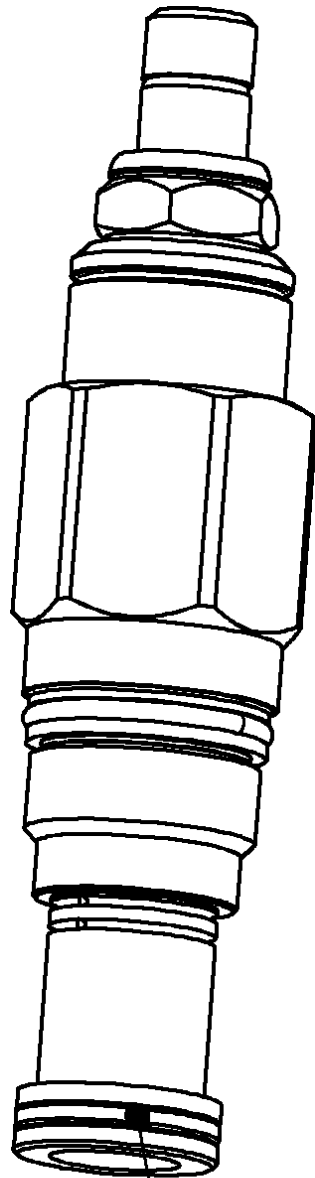


### Note A:

Mount with Cyberbound TT62 according instructions at the end of this partsbook.

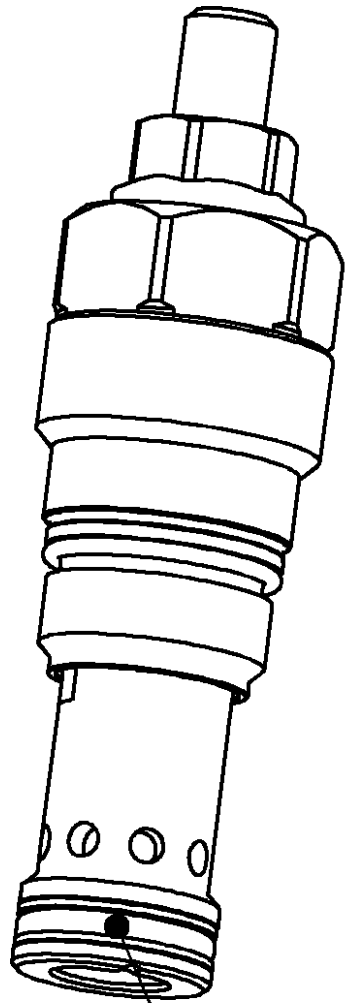
3	290066544	Blanking end ISO 6149	2
2	271060533	Cartridge- relief valve	2
1	501734	Baseplate	1
<b>POS</b>	<b>PARTNUMBER</b>	<b>PARTNAME</b>	<b>QT</b>

<b>Concrete Crusher</b>	<i>Page</i>	<b>28</b>	<i>of</i>	<b>36</b>
	<i>Date</i>	<b>March 2021</b>		
	<i>Product type</i>	<b>DCC-40-A</b>		
<b>Cartridge – relief valve</b>	<i>Number</i>	<b>271060533-C</b>		



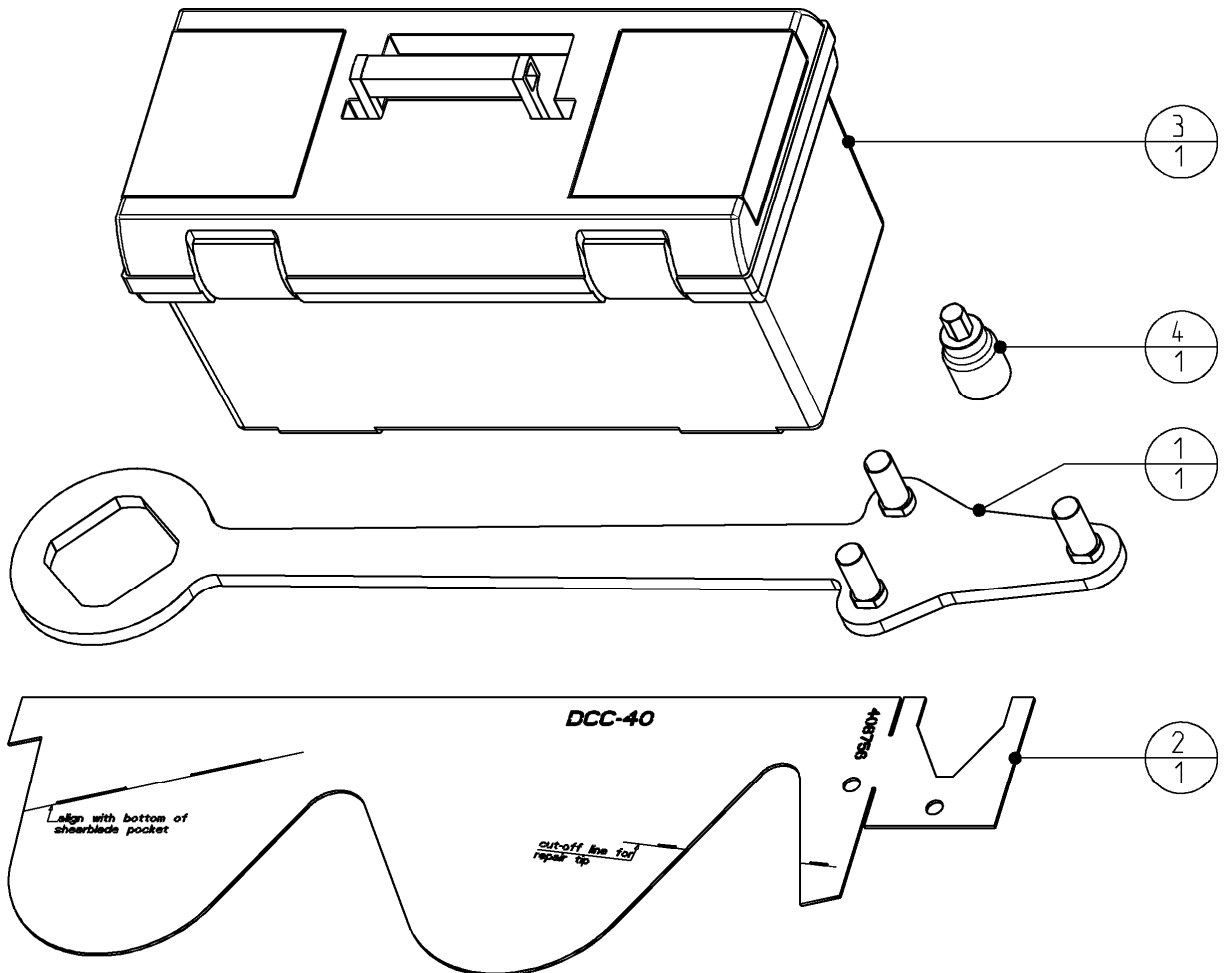
Sealset 504203

<b>Concrete Crusher</b>	<i>Page</i>	<b>29</b>	<i>of</i>	<b>36</b>
	<i>Date</i>	<b>March 2021</b>		
	<i>Product type</i>	<b>DCC-40-A</b>		
<b>Cartridge – relief valve</b>	<i>Number</i>	<b>271091769-A</b>		



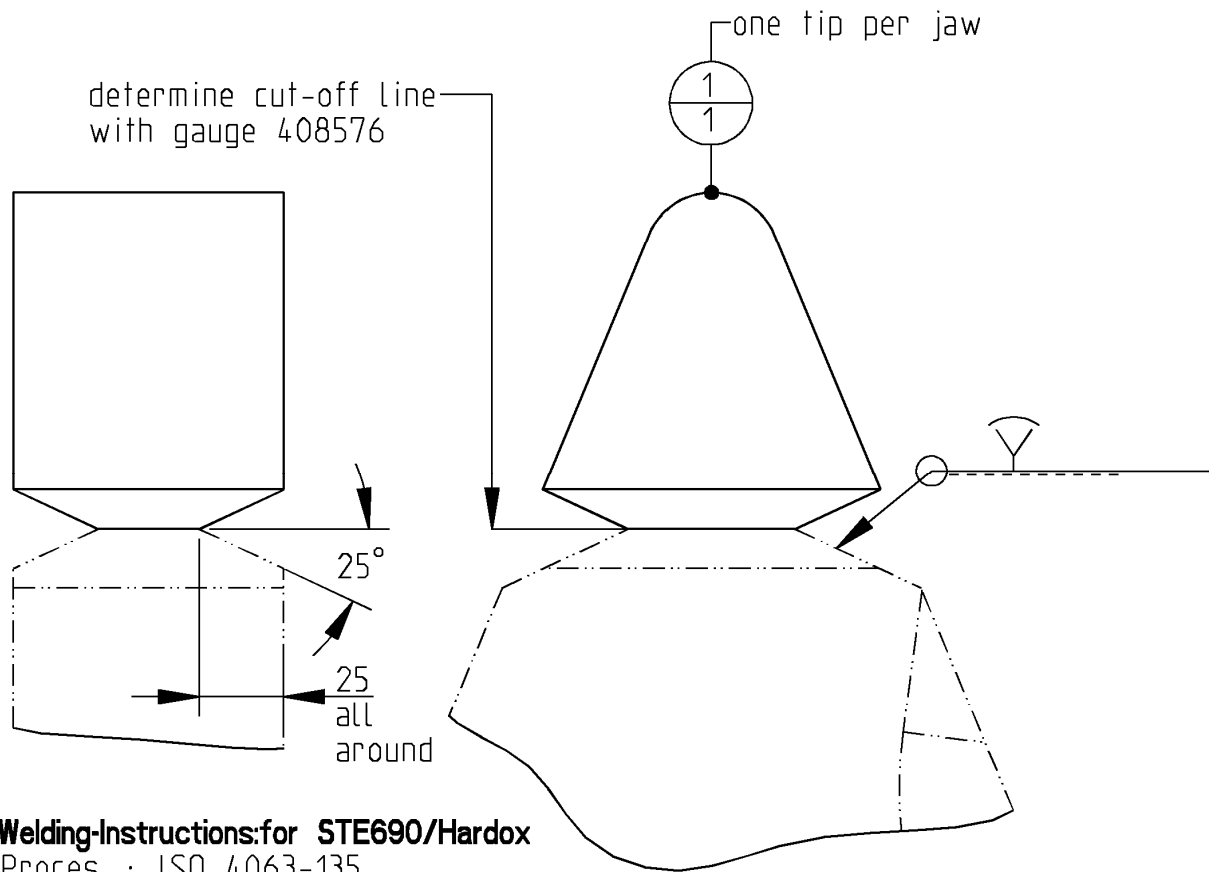
Sealset 504213

<b>Concrete Crusher</b>	Page	<b>30</b>	of	<b>36</b>
	Date	<b>March 2021</b>		
	Product type	<b>DCC-40-A</b>		
<b>Service kit (optional)</b>	Number	<b>408658-00</b>		



4	192072798	Screwdriver bit socket	1
3	508136	Toolbox GP	1
2	408576	Gauge DCC-40 jaw	1
1	404982	Key GP	1
<b>POS</b>	<b>PARTNUMBER</b>	<b>PARTNAME</b>	<b>QT</b>

<b>Concrete Crusher</b>	Page	<b>31</b>	of	<b>36</b>
	Date	<b>March 2021</b>		
	Product type	<b>DCC-40-A</b>		
<b>Tip repair (optional)</b>	Number	<b>408665-00</b>		



**Welding-Instructions:for STE690/Hardox**

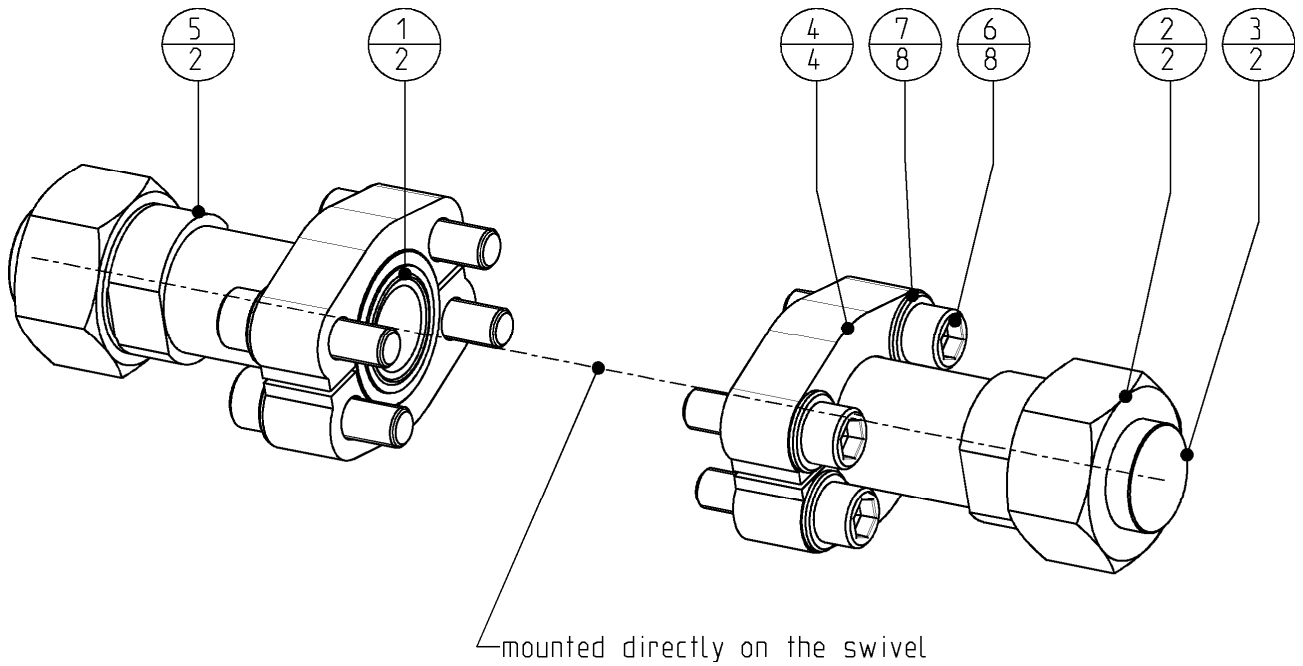
Proces...: ISO 4063-135  
 Quality.: ISO 5817-C  
 Position: ISO 6947-PA/PB  
 Material: Lastek 10015  
 AWS A5.28: ER100 S-1

- Pre-heat welding seams 100-150°C
- All welds not specified: a6
- After welding, gradually cooling down

1	408665	DCC-40 tip-repair	1
<b>POS</b>	<b>PARTNUMBER</b>	<b>PARTNAME</b>	<b>QT</b>

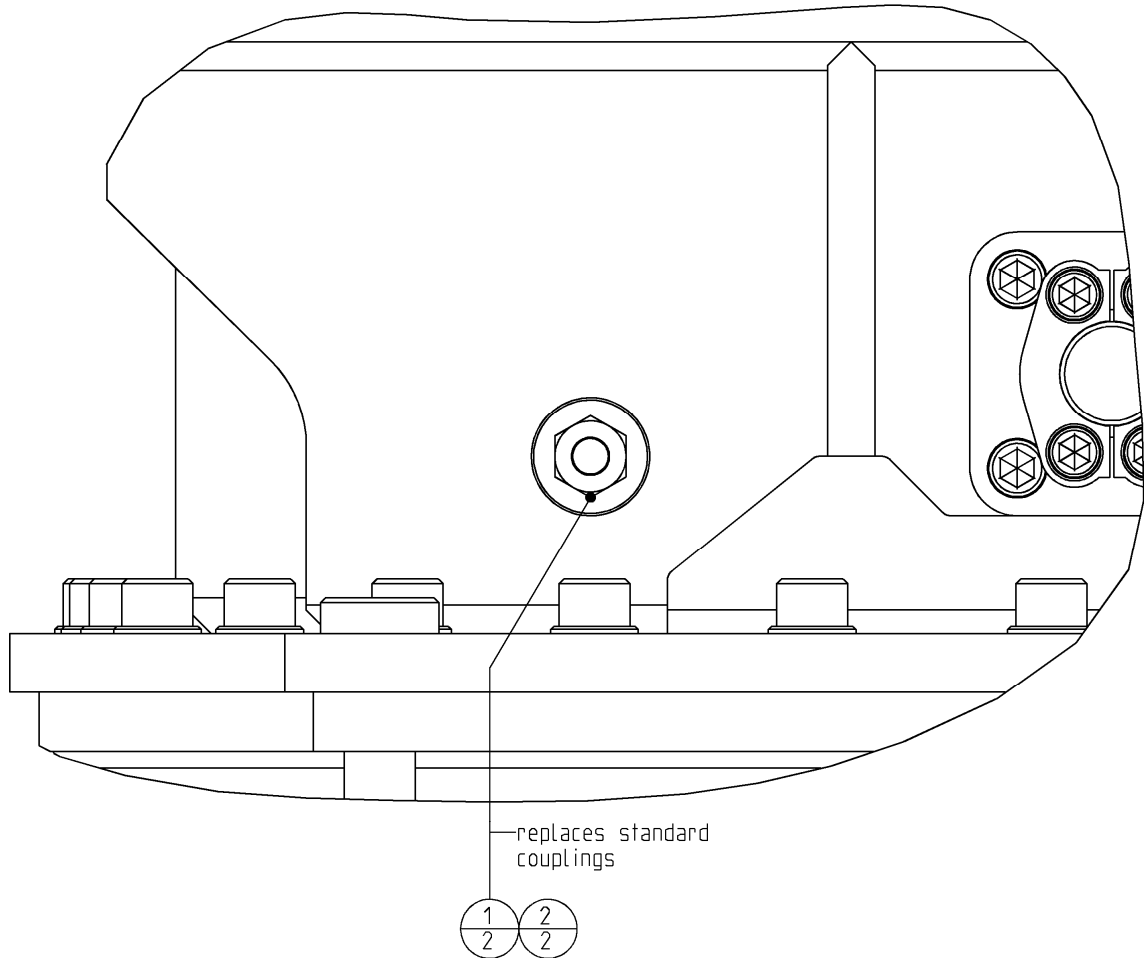


<b>Concrete Crusher</b>	Page	<b>32</b>	of	<b>36</b>
	Date	<b>March 2021</b>		
	Product type	<b>DCC-40-A</b>		
<b>Fitting kit 38S (optional)</b>	Number	<b>408496-01</b>		



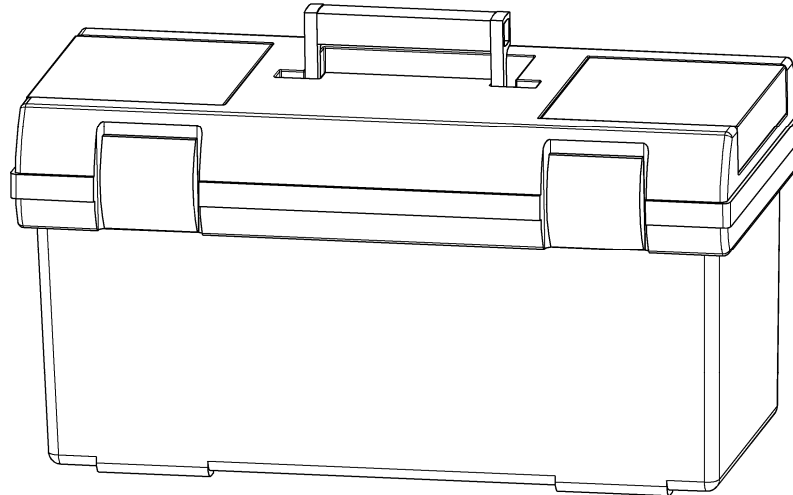
7	122000163	Washer normal	8
6	506005	Hex. socket head cap screw	8
5	503912	SAE flange adapter XLong	2
4	503504	SAE split flange	4
3	500949	Blanking plug	2
2	500930	Nut coupling	2
1	500603	Seal - flange	2
<b>POS</b>	<b>PARTNUMBER</b>	<b>PARTNAME</b>	<b>QT</b>

<b>Concrete Crusher</b>	Page	<b>33</b>	of	<b>36</b>
	Date	<b>March 2021</b>		
	Product type	<b>DCC-40-A</b>		
<b>Fitting kit JIC (optional)</b>	Number	<b>406403-00</b>		



2	503662	Blanking cap	2
1	503650	Male stud coupling	2
<b>POS</b>	<b>PARTNUMBER</b>	<b>PARTNAME</b>	<b>QT</b>

<b>Concrete Crusher</b>	Page	<b>34</b>	of	<b>36</b>
	Date	<b>March 2021</b>		
	Product type	<b>DCC-40-A</b>		
<b>Toolbox</b>	Number	<b>508136-02</b>		



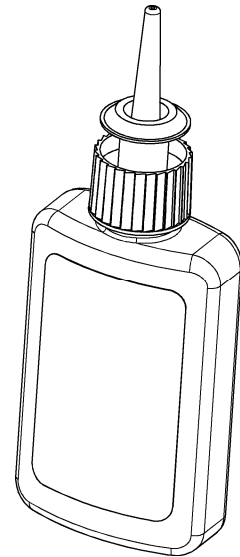
**Content of toolbox,  
completed with shims, partsbook and manual of the shear**

				25	257013302	Kantseal 15,54 x 2,51	2
				24	121060762	Locknut M10 SEAL LOCK	2
				16	504009	O-ring 44,04x 3,53	3
				17	504017	O-ring 36,09x 3,53	2
				18	504048	O-ring 25,3 x 2,4	3
				19	504047	O-ring 20,3 x 2,4	3
				20	504046	O-ring 16,3 x 2,4	3
				21	504070	O-ring 12,37x 2,62	3
				22	504045	O-ring 12,0 x 2,0	3
				23	504043	O-ring 6,0 x 1,5	3
				15	504041	Seal 1-1/4" 38,8x45,8x2	2
				14	504040	Seal 1" 29,7x35,7x2	2
				13	504039	Seal 3/4" 23,9x29,2x1,5	2
				12	504036	Seal 1/4" 11,6x16,5x1,5	2
				11	504038	Seal 1/2" 18,5x23,9x1,5	2
				10	504097	Seal Flange 1-1/2"	3
				9	500603	Seal Flange 1-1/4"	3
				8	500601	Seal Flange 1"	3
				7	500600	Seal Flange 3/4"	3
				6	189069365	Sticker "Free to tank"	2
				5	508152	Sticker "Maintenance"	4
				4	508113	Sticker "Safety"	4
				3	503638	Testpoint 7/16"UNF	2
				2	500740	Testpoint G1/4"	2
				1	508137	Toolbox 580x290x300	1
				<b>POS</b>	<b>PARTNUMBER</b>	<b>PARTNAME</b>	<b>QT</b>
45	251065237	Back-up ring 50,0x 44,6x1,4	2				
44	504026	Back-up ring 44,5x42,5x2,9	2				
43	290058186	Blanking end M33x2 OR	1				
42	290058185	Blanking end M27x2 OR	1				
41	290058184	Blanking end M22x1,5 OR	1				
40	290066544	Blanking end M10x1,0 OR	1				
39	500654	Blanking end 1" -WD	1				
38	500653	Blanking end 3/4"-WD	1				
37	500652	Blanking end 1/2"-WD	1				
36	500651	Blanking end 3/8"-WD	1				
35	500650	Blanking end 1/4"-WD	1				
34	500649	Blanking end 1/8"-WD	1				
33	502562	Bleedingscrew M10 L=58,5	2				
32	120075770	Blanking screw M8x1,0	4				
31	502000	Filter line built-in	2				
30	506046	Glue Loctite 2701 5ml	1				
29	195050158	Glue TT62 pump gel	1				
28	508139	Grease cartridge	1				
27	508138	Grease pistol	1				
26	500560	Grease-nipple, straight M10x1	10				

<b>Concrete Crusher</b>	Page	<b>35</b>	of	<b>36</b>
	Date	<b>March 2021</b>		
	Product type	<b>DCC-40-A</b>		
<b>Additional parts</b>	Number	<b>n.a.</b>		

## Chemical lock

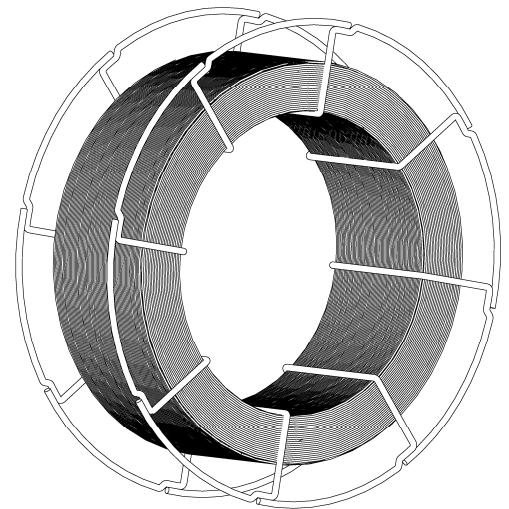
195050158	Cyberbond TT62 Pumpgel	1
506018	Loctite 480 Flacon 20 gr	1
506017	Loctite 638 Flacon 50 ml	1
506016	Loctite 270 Flacon 50 ml	1
<b>PARTNUMBER</b>	<b>PARTNAME</b>	<b>QT</b>



## MAG welding wire

- for hard facing cutting blades
- 48-52 HRc
- Standards;
  - AWS A 5.21: no standard
  - EN ISO 14700: ~S Fe14
  - DIN: W.Nr. 1.8425
  - DIN 8555: MSG 2-GZ-500

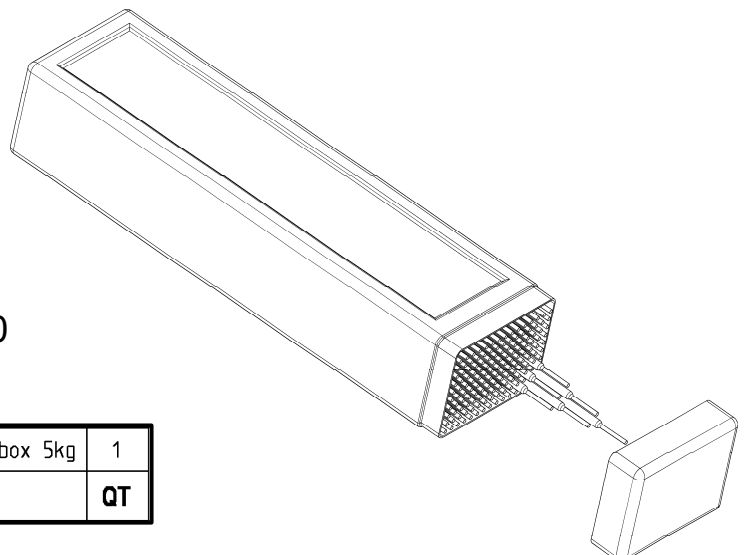
501237	Welding wire MAG; 1.8425. coil 15kg	1
<b>PARTNUMBER</b>	<b>PARTNAME</b>	<b>QT</b>



## Welding electrodes

- for hard facing cutting blades
- 48-52 HRc
- Standards;
  - AWS A 5.21: no standard
  - EN ISO 14700: ~S Fe14
  - DIN: W.Nr. 1.8425
  - DIN 8555: MSG 2-GZ-500

501238	Weld. electr.:1.8425, Ø 2,5mm, box 5kg	1
<b>PARTNUMBER</b>	<b>PARTNAME</b>	<b>QT</b>



<b>Concrete Crusher</b>	Page	<b>36</b>	of	<b>36</b>
	Date	<b>March 2021</b>		
	Product type	<b>DCC-40-A</b>		
<b>Instructions</b>	Number	<b>n.a.</b>		

## Mounting instructions for Cyberbound TT 62

This instruction shall guarantee that all hydraulic fittings and cartridges will be mounted and glued in correctly.

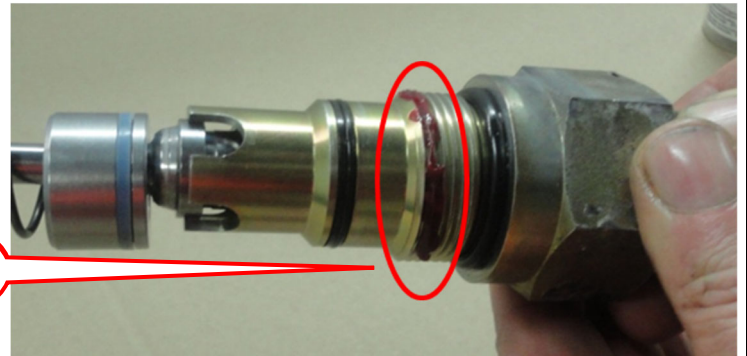
### Procedure:

Clean and degrease thoroughly all components with a special cleaner for anaerobic adhesives (e.g. Loctite cleaner 7063) or acetone.

Apply on the outside thread only a bead of Cyberbond TT62 pump gel to approx. 2/3 of the girth of the second thread for fittings up to a diameter of 20mm or to the entire girth for fittings with a diameter larger than 20mm.



Cyberbound  
TT 62



Clean from adhesive residues pressed out from the bore hole after fitting.

**ATTENTION. The sealings shall be free of adhesive residues!**

Tighten fittings with given fastening torques.

## Standard torque values for bolts

(when not indicated)

Thread size	Torque (Nm) for quality		
	<b>8.8</b>	<b>10.9</b>	<b>12.9</b>
<b>M8</b>	22,5	32,4	38,7
<b>M10</b>	45,0	63,0	75,6
<b>M12</b>	77,4	109,0	131,0
<b>M16</b>	194,0	270,0	324,0
<b>M20</b>	369,0	522,0	630,0
<b>M24</b>	639,0	900,0	1080,0
<b>M27</b>	945,0	1305,0	1575,0
<b>M30</b>	1260,0	1800,0	2160,0



## DEMAREC AND KINSHOFER WORLDWIDE

---

### Netherlands:

#### **Demarec**

Demolition and Recycling Equipment BV

De Hork 32

5431 NS Cuijk

Netherlands

TEL. +31 (0) 485 442300

FAX +31 (0) 485 442120

Email:

[info@demarec.com](mailto:info@demarec.com)

### United Kingdom:

**Kinshofer UK Ltd.**

4 Milton Industrial Court,

Horsfield Way, Bredbury

Stockport, Cheshire, SK6 2TA

United Kingdom

TEL. +44 (0) 161 - 406 7046

FAX +44 (0) 161 - 406 7014

Email:

[sales@kinshofer.co.uk](mailto:sales@kinshofer.co.uk)

### France:

**Kinshofer France S.A.R.L.**

B.P. 20100

67213 Obernai Cedex

France

TEL. +33 (0) 388 39 55 00

FAX +33 (0) 388 79 06 75

Email:

[info@kinshofer.fr](mailto:info@kinshofer.fr)

### Czech Republic:

**Kinshofer CZ s.r.o.**

Cs. Legii 568

37810 Ceske Velenice

Czech Republic

TEL. +420 384 - 795 110

FAX +420 384 - 795 120

### Headquarters:

#### Germany:

**Kinshofer GmbH**

Hauptstrasse 76

83666 Waakirchen

Germany

TEL. +49 (0) 8021 - 88 99 0

FAX +49 (0) 8021 - 88 99 37

Email:

[info@kinshofer.com](mailto:info@kinshofer.com)

#### North America:

**Kinshofer North America**

5040 Mainway Drive, Unit 11

Burlington, ON L7L 7G5

Canada

TEL. +1 (905) 335 2856

FAX +1 (905) 335 4529

Toll Free in Canada and USA:

TEL. 1-800-268-9525

Email:

[sales-northamerica@kinshofer.com](mailto:sales-northamerica@kinshofer.com)

#### Finland:

**Kinshofer Aponox Oy**

Terminaalitie 10

13430 Hämeenlinna

Finland

TEL. +358 (0)75 7540 200

FAX +358 (0)75 7540 210

#### Beijing:

**Darda Kinshofer**

**Construction Machinery Co. Ltd.**

Unit #306, Landmark Tower 2

8 Dongsanhuan Road

Beijing 100004

China

TEL. +86 (10) 6590 6422

FAX +86 (10) 6590 6423

Email:

[info@darda.com.cn](mailto:info@darda.com.cn)