

# Parts book

Product type
DLC-30 Serie 1



Den Hoek 10  
5845 EL St. Anthonis  
the Netherlands  
Telephone +31 (0)485 442300  
Fax +31 (0)485 442120

[info@demarec.com](mailto:info@demarec.com)  
[www.demarec.com](http://www.demarec.com)

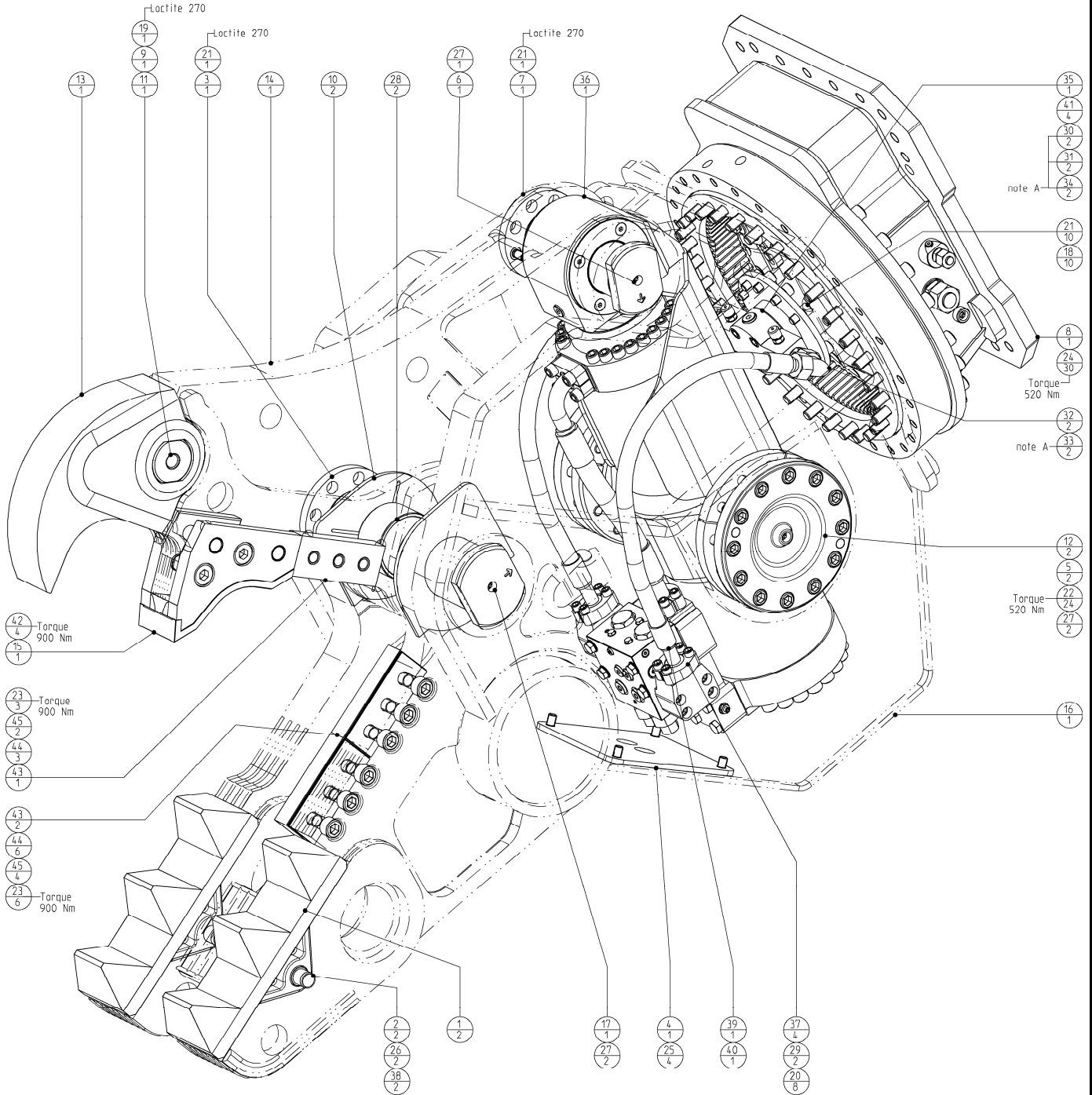


*Copyright Demolition and Recycling Equipment BV  
All rights strictly reserved.  
Reproductions to third parties in any form whatever is not permitted  
without written authority from the proprietor*

# Rotatable Combi Shear

## Housing GP

Page	1	of	17
Date	June 2010		
Product type	DLC-30		
Number	DLC30L075AAA5 404320-02		



Parts marked with a letter in column "Set" can be ordered as a set with Itemnumber

Set	Wearpartset	Itemnumber
a	tripod shroud set	402820
b	Cuttingedges set	402825
c	Piercing-tip / shroud set	403652
d	Ripper-tooth set (excl. pin)	402842

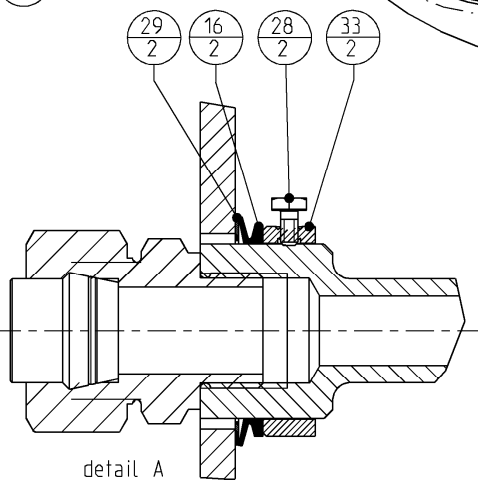
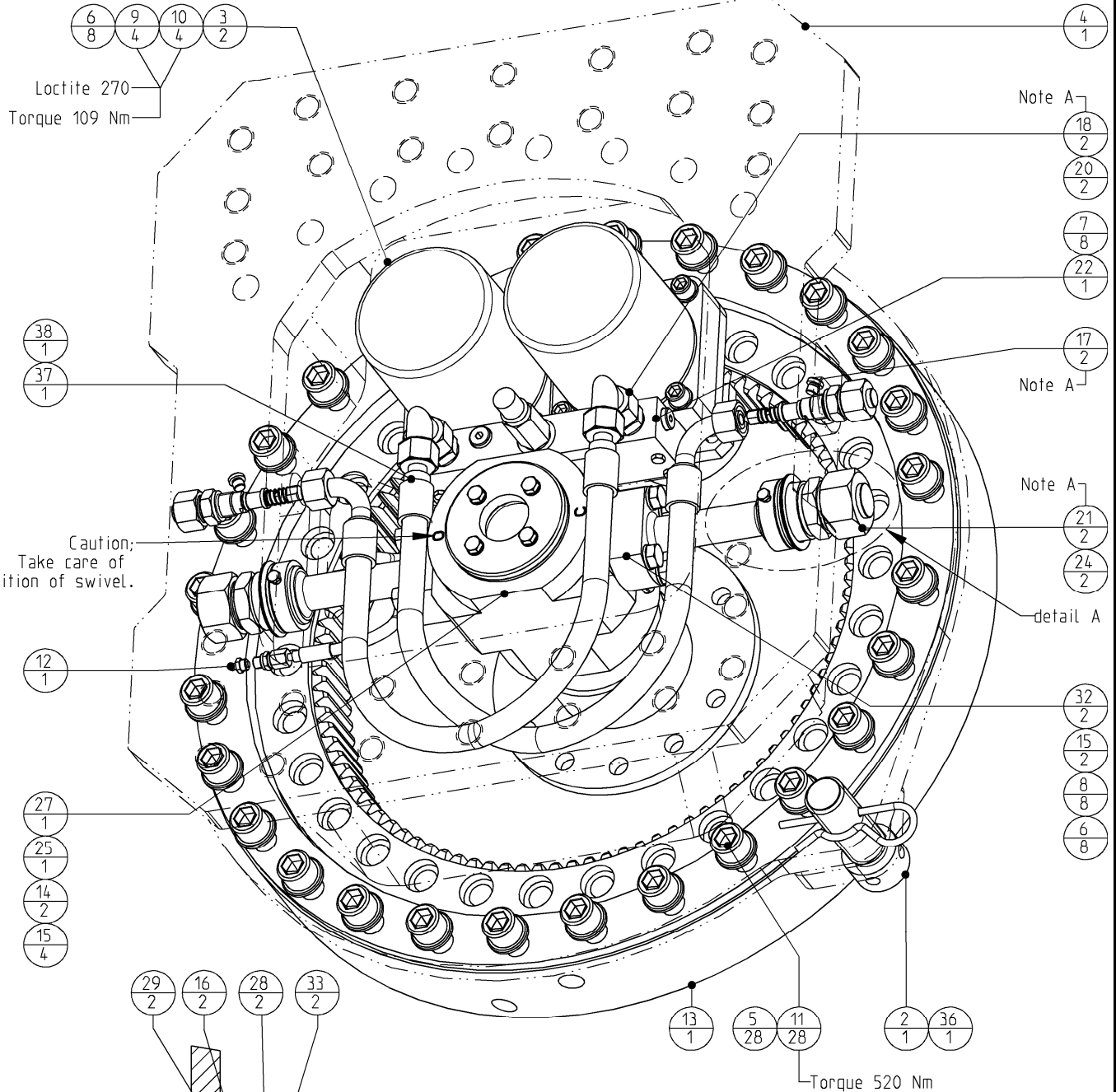
note A  
 # Degrease threads with brake cleaner.  
 # Rub in- and outside threads in with Cyberbound TT62 by using a brush.  
 # Clean seal from plug during screwing in.  
 # A drying time from the glue of at least 1 hour needs to be respected before it has any contact with oil.



# Rotatable Combi Shear

Page	<b>3</b>	of	<b>17</b>
Date	<b>June 2010</b>		
Product type	<b>DLC-30</b>		
Number	<b>401766-10</b>		

## Rotatorhead GP



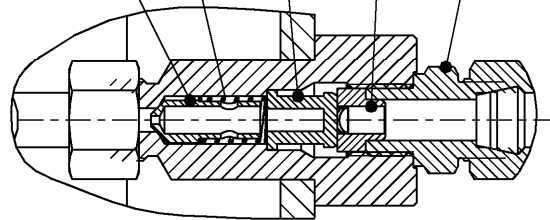
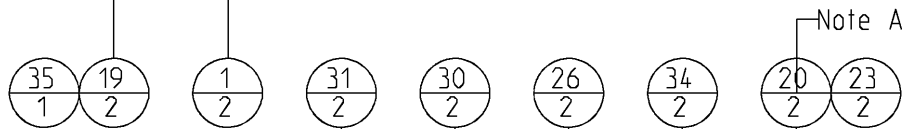
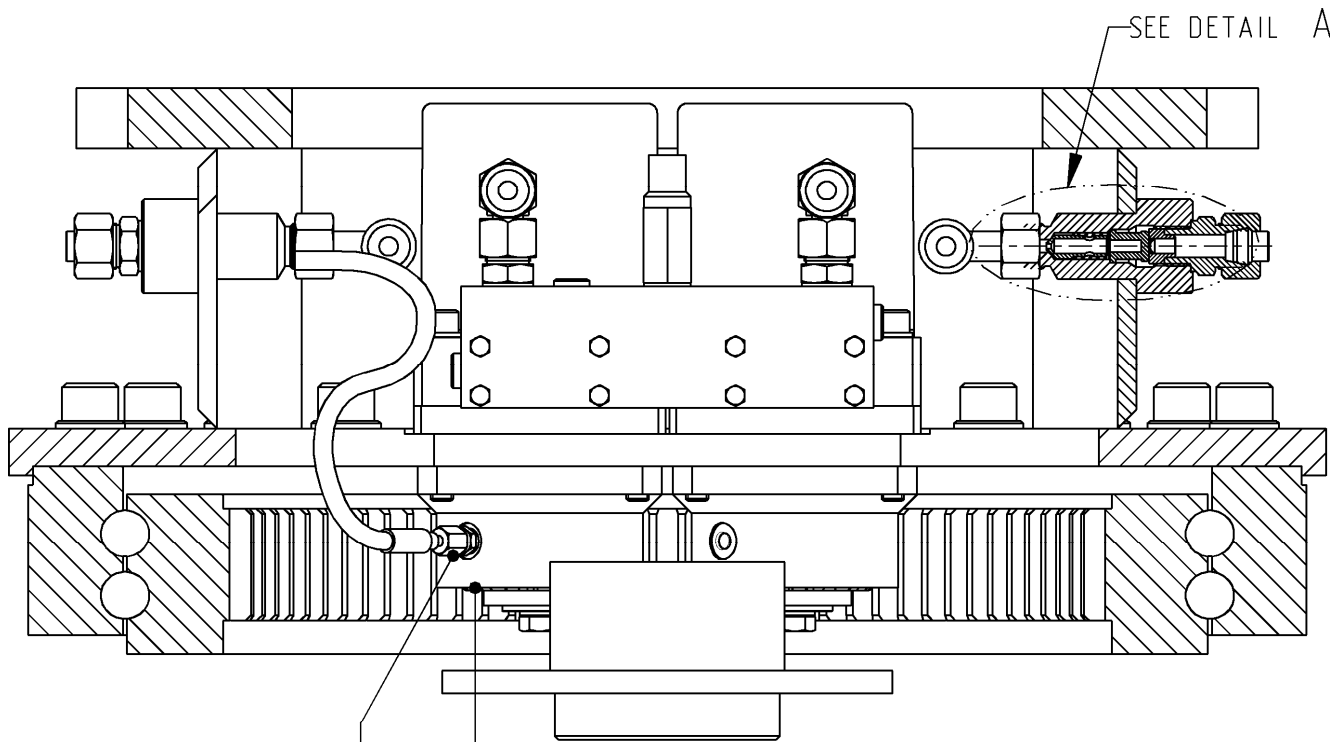
Note A

- # Degrease threads with brake cleaner.
- # Rub in- and outside threads in with Cyberbound TT62 by using a brush.
- # Clean seal from plug during screwing in.
- # A drying time from the glue of at least 1 hour needs to be respected before it has any contact with oil.

# Rotatable Combi Shear

Page	<b>4</b>	of	<b>17</b>
Date	<b>June 2010</b>		
Product type	<b>DLC-30</b>		
Number	<b>401766-10</b>		

## Rotatorhead GP



DETAIL **A**

### Note A

- # Degrease threads with brake cleaner.
- # Rub in- and outside threads in with Cyberbound TT62 by using a brush.
- # Clean seal from plug during screwing in.
- # A drying time from the glue of at least 1 hour needs to be respected before it has any contact with oil.

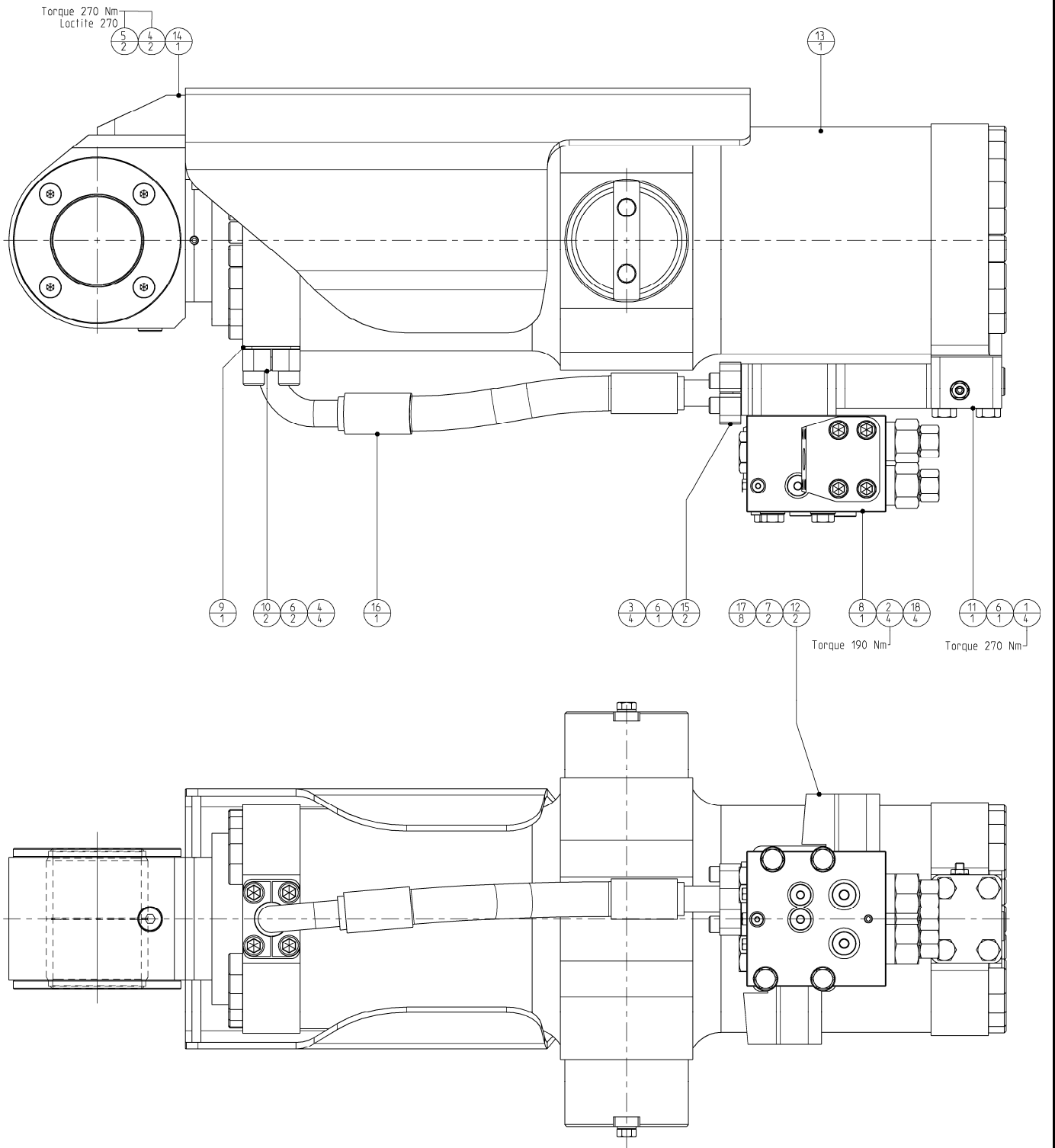
<b>Rotatable Combi Shear</b>	<i>Page</i>	<b>5</b>	<i>of</i>	<b>17</b>
	<i>Date</i>	<b>June 2010</b>		
	<i>Product type</i>	<b>DLC-30</b>		
<b>Rotatorhead GP</b>	<i>Number</i>	<b>401766-10</b>		

38	500840_VG02	Hydr. hose asm. 1/2" SAE 100 R2AT	1	19	500690	Male stud coupling	2
37	500840_VG01	Hydr. hose asm. 1/2" SAE 100 R2AT	1	18	500673	Adjustable male stud elbow	2
36	500504-3	Locking pin (hair-pin)	1	17	500649	Blanking end	2
35	296012429_VG01	Hydr. hose asm. 3/16" SAE 100R1AT	1	16	500621	Seal	2
34	773058645	Drossel - ring	2	15	500601	O-ring	6
33	773057512	Ring - adjusting	2	14	500600	O-ring	2
32	773056990	Hydraulic flange - pipe	2	13	500591	Stewing Ring; Internal Gear	1
31	273058601	Cone - valve + restriction	2	12	500560	Grease - nipple	1
30	165050749	Spring	2	11	500302	Hex. socket head cap screw	28
29	122010270	Ring - shim	2	10	500255	Hex. socket head cap screw	4
28	120014016	Bolts Hexagon	2	9	500253	Hex. socket head cap screw	4
27	502286	Swivel GP	1	8	500135	Bolts Hexagon	8
26	502000	Filter	2	7	500099	Bolts Hexagon	8
25	501074	Swivel - Flange Intermed.	1	6	500068	Washer spring	16
24	500948	Blanking plug	2	5	500055	Washer HV	28
23	500945	Blanking plug	2	4	401356	Rotatorhead asm. machined	1
22	500758	Valve GP	1	3	401201	Motor GP	2
21	500698	Male stud coupling	2	2	400066	Lock - pin	1
20	500693	Male stud coupling	4	1	400063	Cap - Pinion	2
				<b>POS</b>	<b>PARTNUMBER</b>	<b>PARTNAME</b>	<b>QT</b>

# Rotatable Combi Shear

Page	6	of	17
Date	June 2010		
Product type	DLC-30		
Number	502705-00		

## Cylinder & Valve GP



<b>Rotatable Combi Shear</b>	<i>Page</i>	<b>7</b>	<i>of</i>	<b>17</b>
	<i>Date</i>	<b>June 2010</b>		
	<i>Product type</i>	<b>DLC-30</b>		
<b>Cylinder &amp; Valve GP</b>	<i>Number</i>	<b>502705-00</b>		

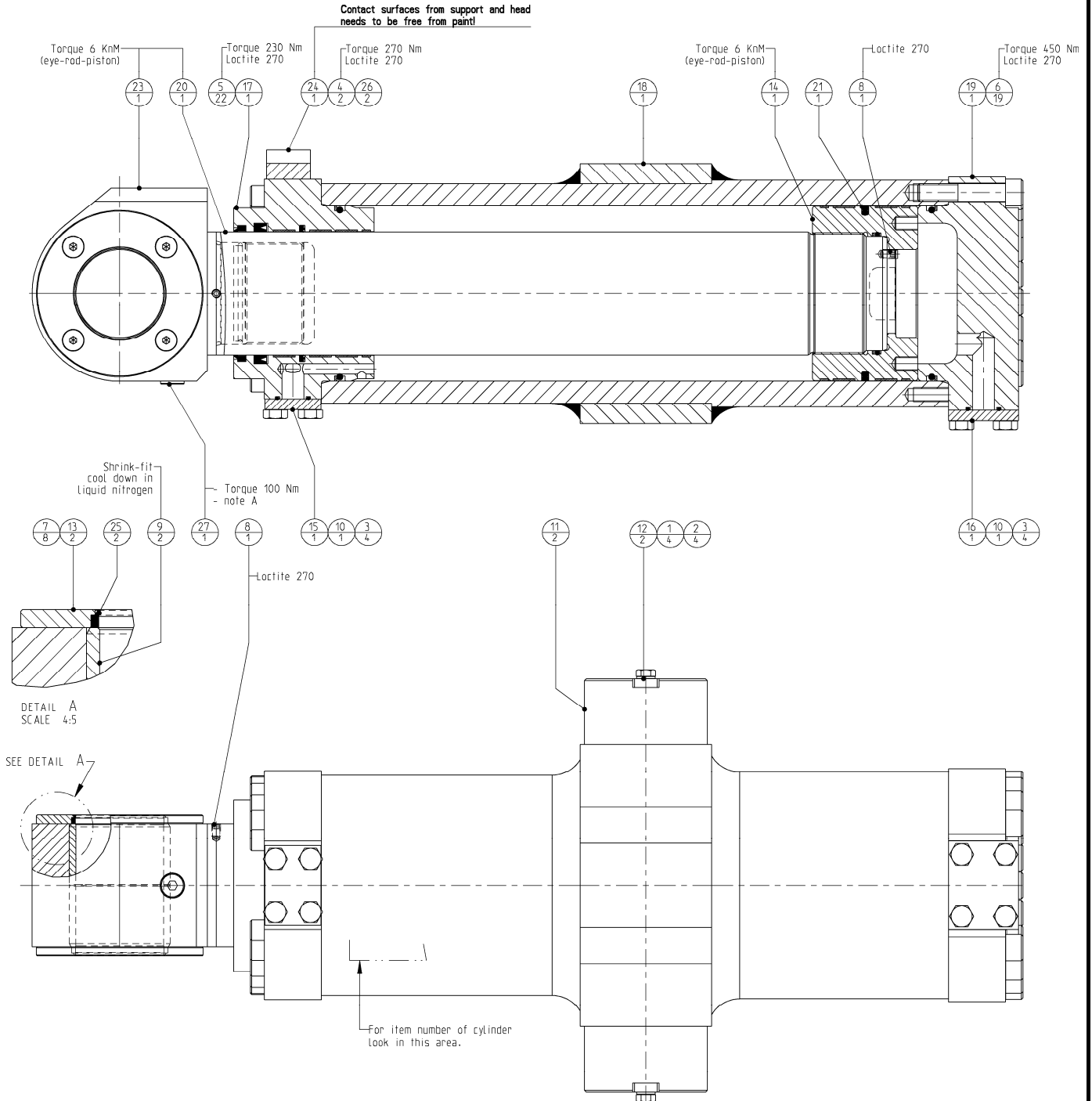
18	122000163	Washer normal	4
17	120060526	Hex. socket head cap screw	8
16	505083_RM502705	Hydr. hose asm. 1" SAE 100R13	1
15	503503	SAE split - flange	2
14	502708	Protection cap asm.	1
13	502706	Hydraulic Cylinder GP	1
12	502561	Flange 95°	2
11	502559	Flange - bottom GP	1
10	502497	Split - flange spec.	2
9	502496	Flange - intermed.	1
8	500755	Overcentre valve	1
7	500603	O-ring	2
6	500601	O-ring	4
5	500265	Hex. socket head cap screw	2
4	500262	Hex. socket head cap screw	6
3	500250	Hex. socket head cap screw	4
2	500200	Bolts Hexagon	4
1	500149	Bolts Hexagon	4
<b>POS</b>	<b>PARTNUMBER</b>	<b>PARTNAME</b>	<b>QT</b>



# Rotatable Combi Shear

Page	8	of	17
Date	June 2010		
Product type	DLC-30		
Number	502706-00		

## Cylinder GP



**note A**

- # Degrease threads with brake cleaner.
- # Rub in- and outside threads in with Cyberbound TT62 by using a brush.
- # Clean seal from plug during screwing in.
- # A drying time from the glue of at least 1 hour needs to be respected before if has any contact with oil.

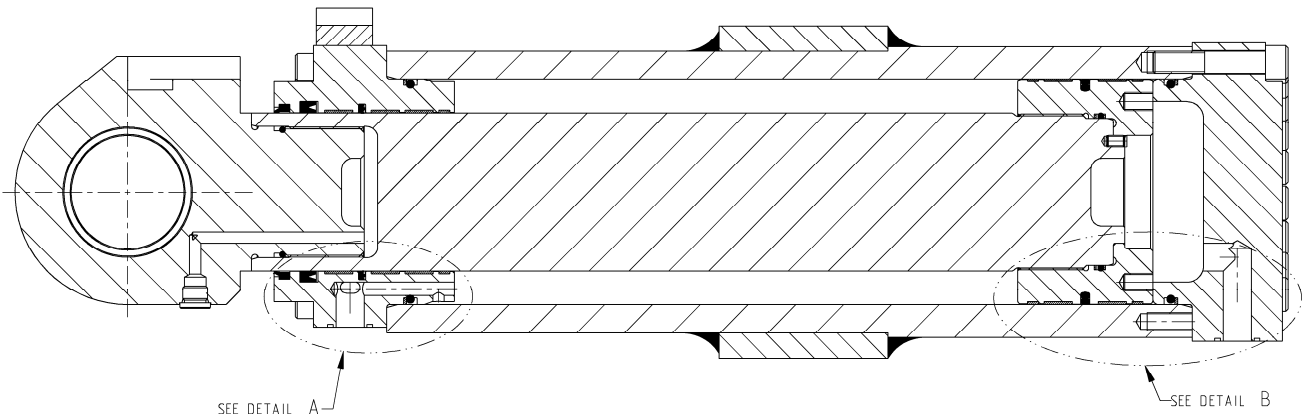
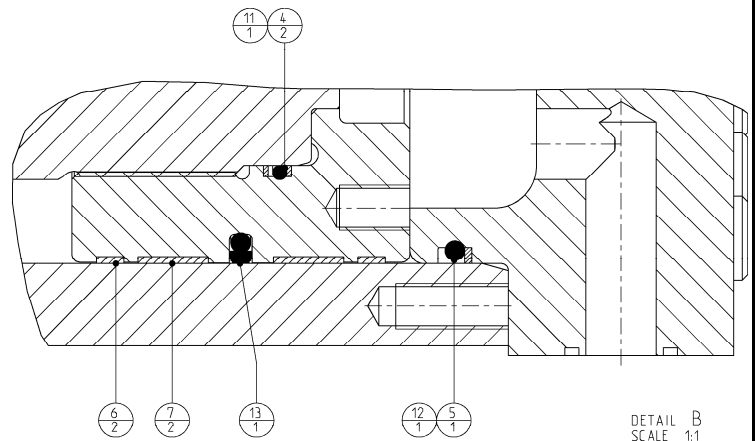
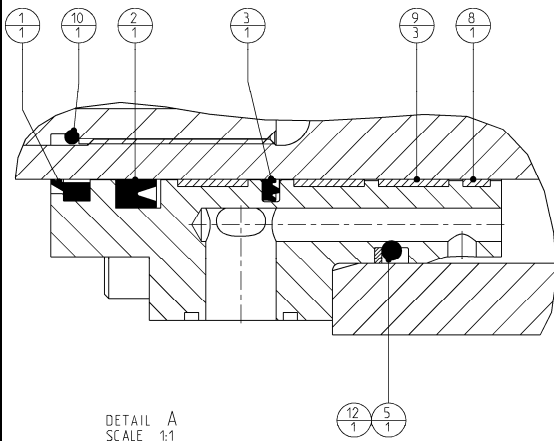
<b>Rotatable Combi Shear</b>	<i>Page</i>	<b>9</b>	<i>of</i>	<b>17</b>
	<i>Date</i>	<b>June 2010</b>		
	<i>Product type</i>	<b>DLC-30</b>		
<b>Cylinder GP</b>	<i>Number</i>	<b>502706-00</b>		

27	290058184	Blanking end ISO 6149	1
26	506033	Lockwasher - Schnorr	2
25	504021	Scraper	2
24	502713	Support - protection cap	1
23	502707	Rod - eye	1
22	502706	Hydraulic Cylinder GP	1
21	502565_RM_502706	Seal - set	1
20	502556	Rod	1
19	502554	Cylinder - bottom	1
18	502552	Cylinder - house asm.	1
17	502333	Cylinder - head	1
16	502259	Blanking cover	1
15	502251	Blanking cover	1
14	502213	Piston	1
13	502127	Spacer	2
12	502050	Lockplate	2
11	502049	Bearing	2
10	500601	O-ring	2
9	500571	Bushing	2
8	500417	Hex. socket set screw	2
7	500347	Flat countersunk head cap screws	8
6	500277	Hex. socket head cap screw	19
5	500267	Hex. socket head cap screw	22
4	500260	Hex. socket head cap screw	2
3	500144	Bolts Hexagon	8
2	500133	Bolts Hexagon	4
1	500068	Washer spring	4
<b>POS</b>	<b>PARTNUMBER</b>	<b>PARTNAME</b>	<b>QT</b>

# Rotatable Combi Shear

Page	<b>10</b>	Of	<b>17</b>
Date	<b>June 2010</b>		
Product type	<b>DLC-30</b>		
Number	<b>502565-00</b>		

## Sealset



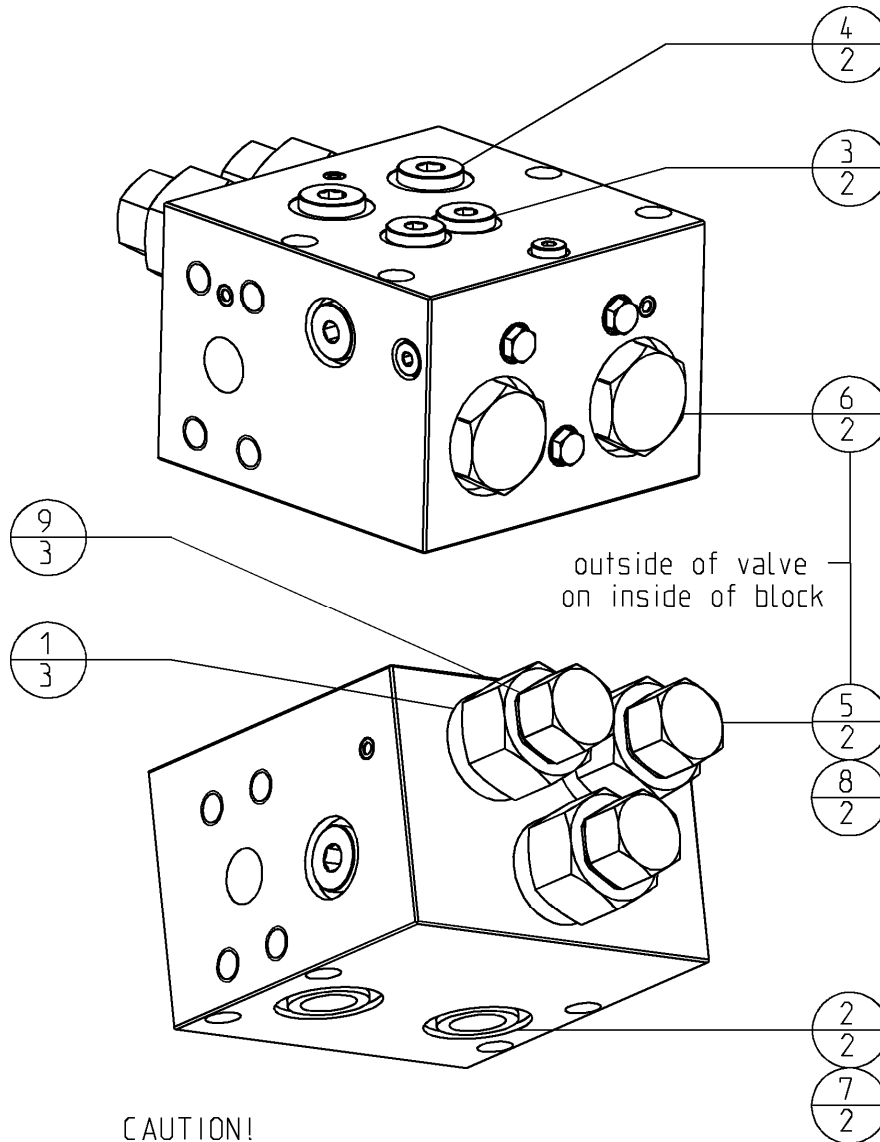
<b>Rotatable Combi Shear</b>	<i>Page</i>	<b>11</b>	<i>of</i>	<b>17</b>
	<i>Date</i>	<b>June 2010</b>		
	<i>Product type</i>	<b>DLC-30</b>		
<b>Sealset</b>	<i>Number</i>	<b>502565-00</b>		

27	290058184	Blanking end ISO 6149	1
26	506033	Lockwasher - Schnorr	2
25	504021	Scraper	2
24	502713	Support - protection cap	1
23	502707	Rod - eye	1
22	502706	Hydraulic Cylinder GP	1
21	502565_RM_502706	Seal - set	1
20	502556	Rod	1
19	502554	Cylinder - bottom	1
18	502552	Cylinder - house asm.	1
17	502333	Cylinder - head	1
16	502259	Blanking cover	1
15	502251	Blanking cover	1
14	502213	Piston	1
13	502127	Spacer	2
12	502050	Lockplate	2
11	502049	Bearing	2
10	500601	O-ring	2
9	500571	Bushing	2
8	500417	Hex. socket set screw	2
7	500347	Flat countersunk head cap screws	8
6	500277	Hex. socket head cap screw	19
5	500267	Hex. socket head cap screw	22
4	500260	Hex. socket head cap screw	2
3	500144	Bolts Hexagon	8
2	500133	Bolts Hexagon	4
1	500068	Washer spring	4
<b>POS</b>	<b>PARTNUMBER</b>	<b>PARTNAME</b>	<b>QT</b>

# Rotatable Combi Shear

Page	<b>12</b>	of	<b>17</b>
Date	<b>June 2010</b>		
Product type	<b>DLC-30</b>		
Number	<b>500755-03</b>		

## Overcentre valve



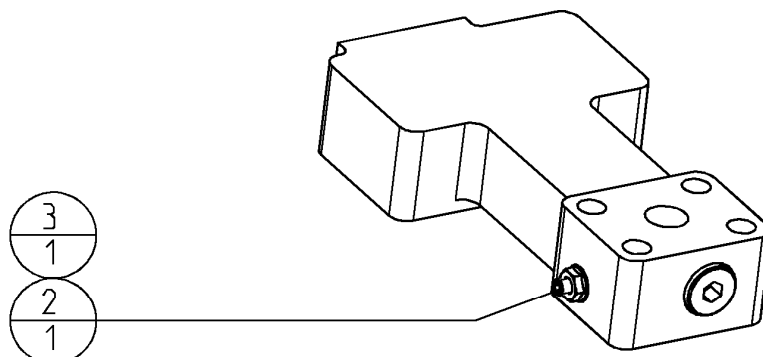
### CAUTION!

Valve is equipped with high quality seals.  
All valves and blanking ends are  
mounted according special instructions.

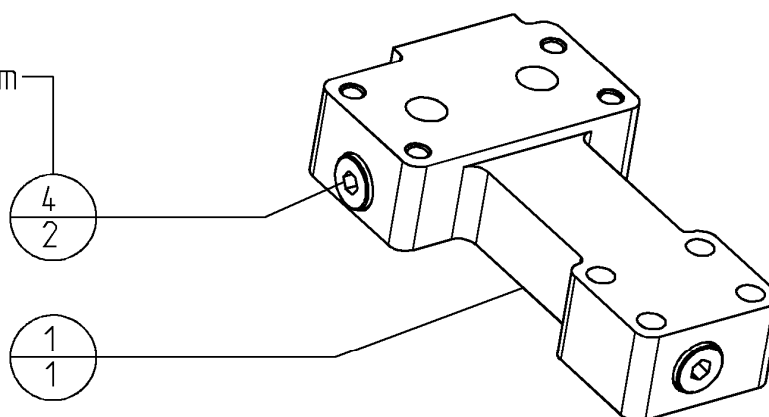
For further information contact your dealer.

9	504034	Bonded seal	3
8	n.a.	Back-up ring	2
7	504026	Back-up ring	2
6	n.a.	O-ring	2
5	n.a.	O-ring	2
4	504083	O-ring	2
3	504082	O-ring	2
2	504017	O-ring	2
1	500601	O-ring	3
<b>POS</b>	<b>PARTNUMBER</b>	<b>PARTNAME</b>	<b>QT</b>
<b>sealset 504080-01</b>			

<b>Rotatable Combi Shear</b>	Page	<b>13</b>	of	<b>17</b>
	Date	<b>June 2010</b>		
	Product type	<b>DLC-30</b>		
<b>Flange GP bottom</b>	Number	<b>502559-00</b>		



- Torque 150 Nm  
- note A



note A

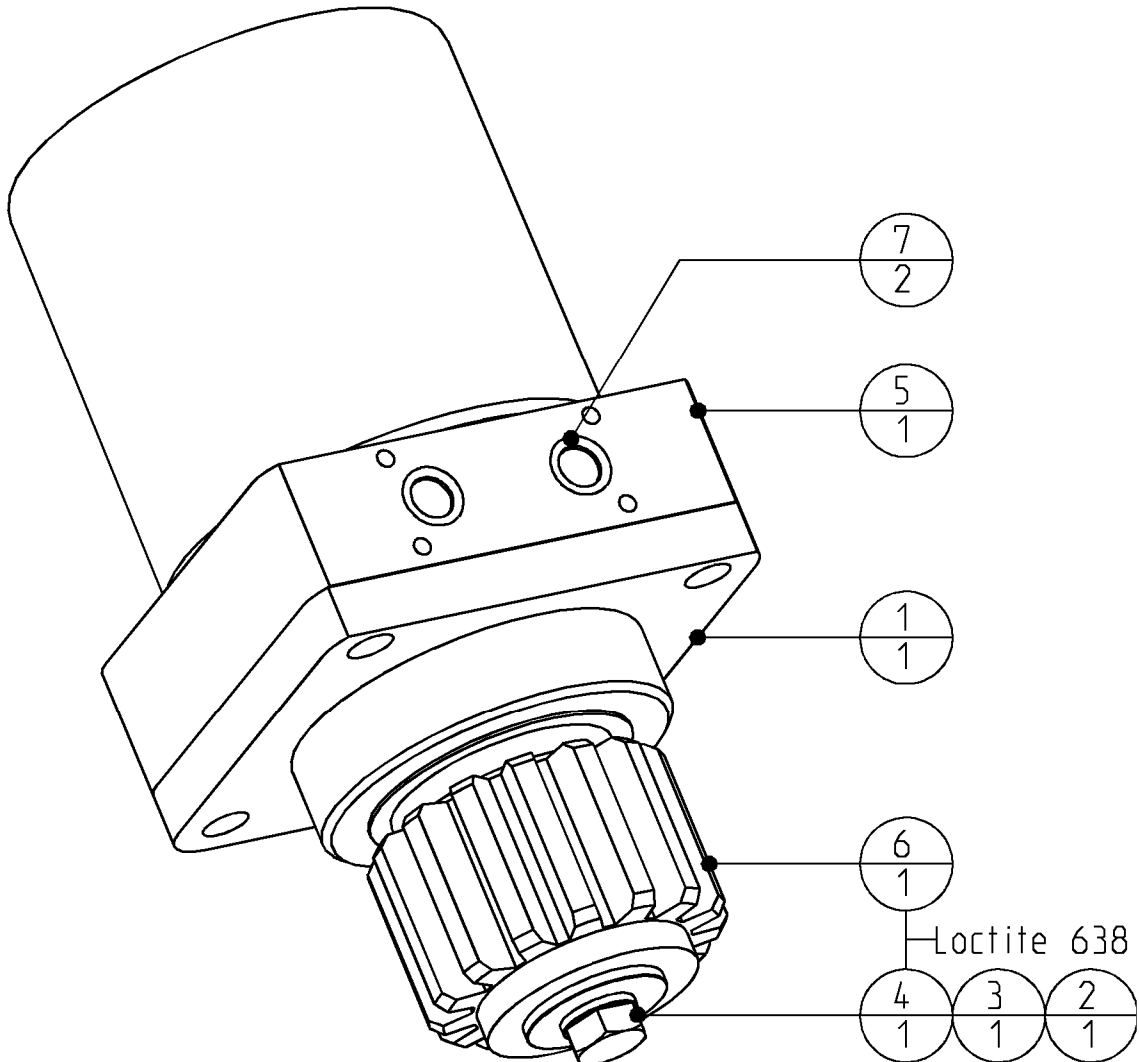
- # Degrease threads with brake cleaner.
- # Rub in- and outside threads in with Cyberbound TT62 by using a brush.
- # Clean seal from plug during screwing in.
- # A drying time from the glue of at least 1 hour needs to be respected before it has any contact with oil.

4	290058185	Blanking end ISO 6149	2
3	121060762	Nut Hexagon sealing	1
2	502562	Bleeding screw	1
1	502560	Flange - bottom	1
<b>POS</b>	<b>PARTNUMBER</b>	<b>PARTNAME</b>	<b>QT</b>

# Rotatable Combi Shear

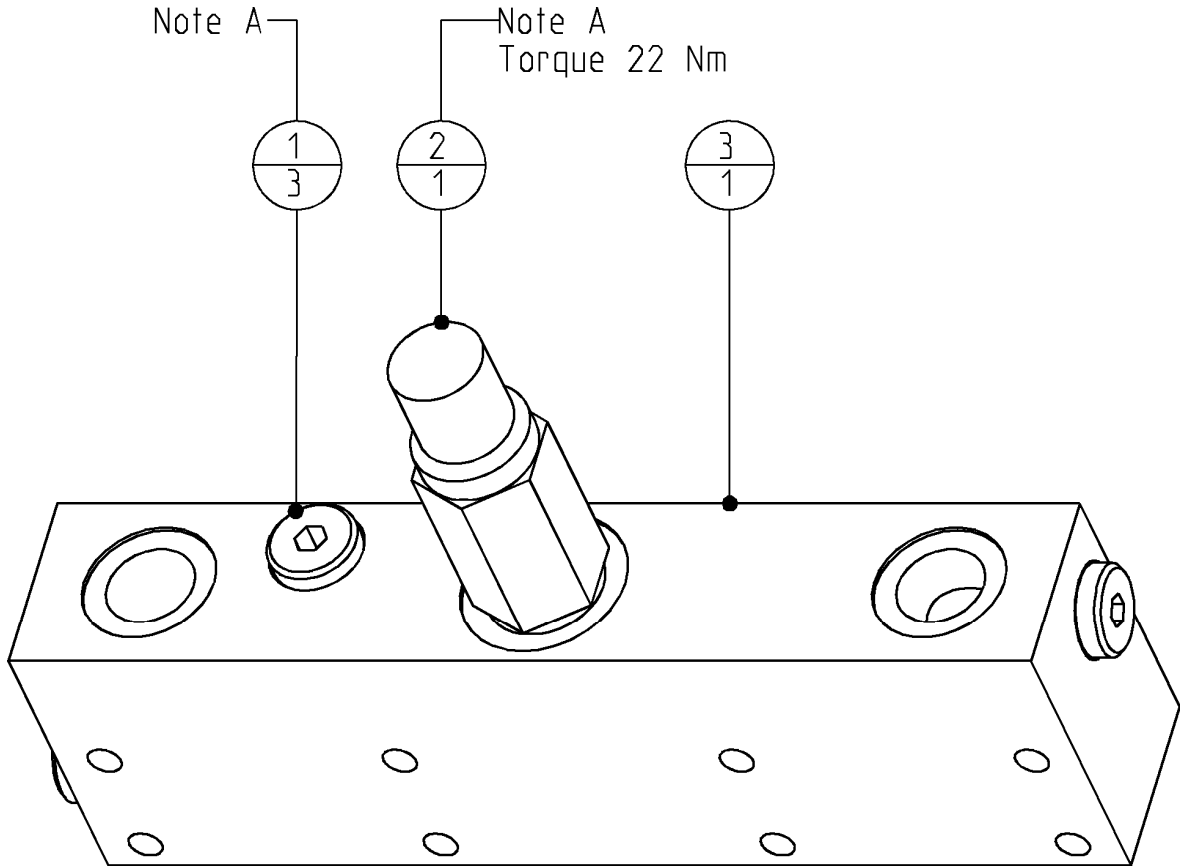
Page	<b>14</b>	of	<b>17</b>
Date	<b>June 2010</b>		
Product type	<b>DLC-30</b>		
Number	<b>401201-00</b>		

## Hydraulic motor GP



7	504070	O-ring	2
6	500851	Pinion	1
5	500763	Hydro-motor	1
4	500131	Bolts Hexagon	1
3	500068	Washer spring	1
2	500062	Washer car	1
1	400593	Motor-flange	1
<b>POS</b>	<b>PARTNUMBER</b>	<b>PARTNAME</b>	<b>QT</b>

<b>Rotatable Combi Shear</b>	Page	<b>15</b>	of	<b>17</b>
	Date	<b>June 2010</b>		
	Product type	<b>DLC-30</b>		
<b>Valve GP</b>	Number	<b>500758-03</b>		



**Note A**

- # Degrease threads with brake cleaner.
- # Rub in- and outside threads in with Cyberbound TT62 by using a brush.
- # Clean seal from plug during screwing in.
- # A drying time from the glue of at least 1 hour needs to be respected before it has any contact with oil.

3	500759	Baseplate	1
2	500757	cross-over relieve valve	1
1	500650	Blanking end	3
<b>POS</b>	<b>PARTNUMBER</b>	<b>PARTNAME</b>	<b>QT</b>



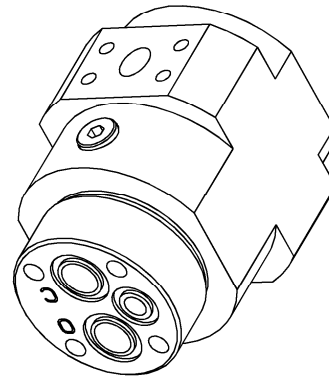
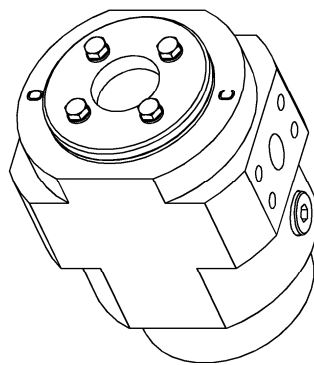
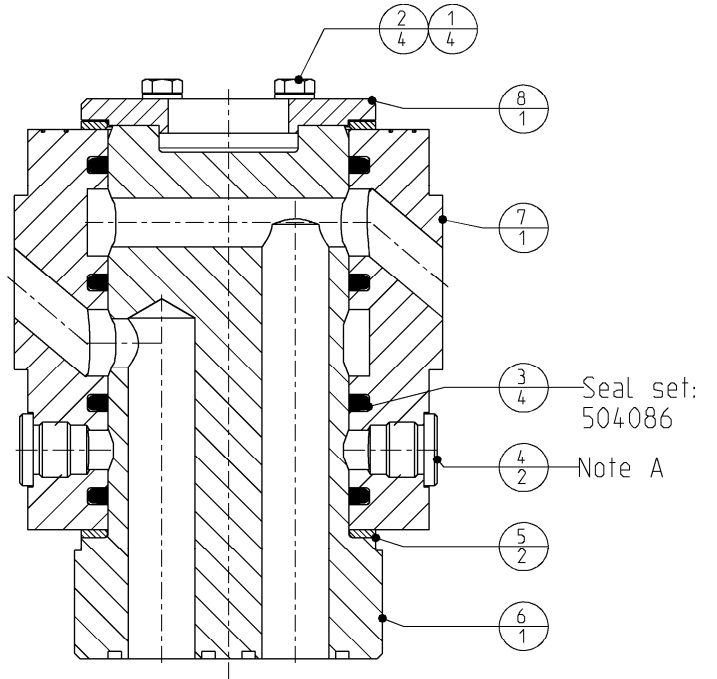
# Rotatable Combi Shear

Page	<b>16</b>	of	<b>17</b>
Date	<b>June 2010</b>		
Product type	<b>DLC-30</b>		
Number	<b>502286-02</b>		

## Swivel GP

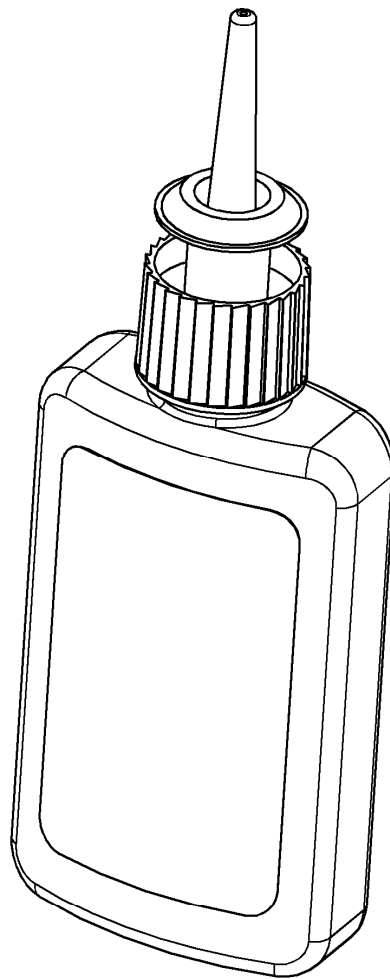
note A

- # Degrease threads with brake cleaner.
- # Rub in- and outside threads in with Cyberbound TT62 by using a brush.
- # Clean seal from plug during screwing in.
- # A drying time from the glue of at least 1 hour needs to be respected before if has any contact with oil.



8	502289	Cover	1
7	502288	Housing	1
6	502287	Stator	1
5	500832	Axial ring	2
4	500652	Blanking end	2
3	500630	Seal	4
2	500105	Bolts Hexagon	4
1	500066	Washer spring	4
<b>POS</b>	<b>PARTNUMBER</b>	<b>PARTNAME</b>	<b>QT</b>

<b>Rotatable Combi Shear</b>	<i>Page</i>	<b>17</b>	<i>of</i>	<b>17</b>
	<i>Date</i>	<b>June 2010</b>		
	<i>Product type</i>	<b>DLC-30</b>		
<b>Chemical lock</b>	<i>Number</i>	<b>n.a.</b>		



195050158	Cyberbond TT62 Pumpgel	1
506017	Loctite 638 Flacon 50 ml	1
506016	Loctite 270 Flacon 50 ml	1
<b>PARTNUMBER</b>	<b>PARTNAME</b>	<b>QT</b>