



Partsbook
for
Concrete Crusher
DCC-50-A

Product	Part Number	Ref.
DCC-50-A Serie 1	DCC050A155AAB6	



Partsbook_dcc050a155aab6-e_2021-09-21.docx

September 2021

Demarec Demolition and Recycling Equipment BV

De Hork 32, 5431 NS Cuijk, Netherlands

TEL.
FAX

+31 (0) 485 442300
+31 (0) 485 442120

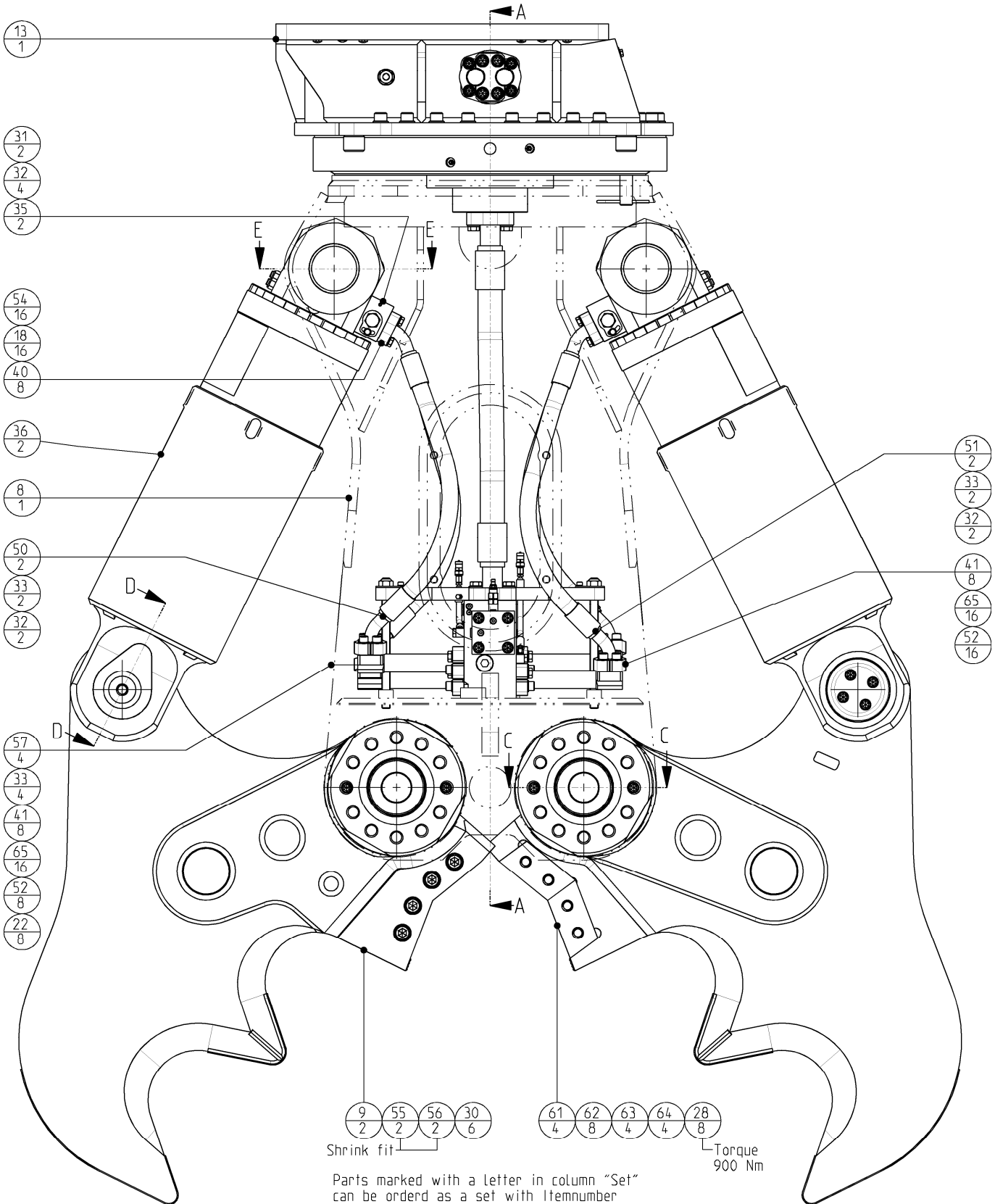
INTERNET
E-MAIL

www.demarec.com
info@demarec.com

Concrete Crusher

Page	1	of	38
Date	September 2021		
Product type	DCC-50-A		
Number	DCC050A155AAB6-E		

Housing GP



Remark:
For the order of (dis)assembling and adjusting jaw and blades see user manual.

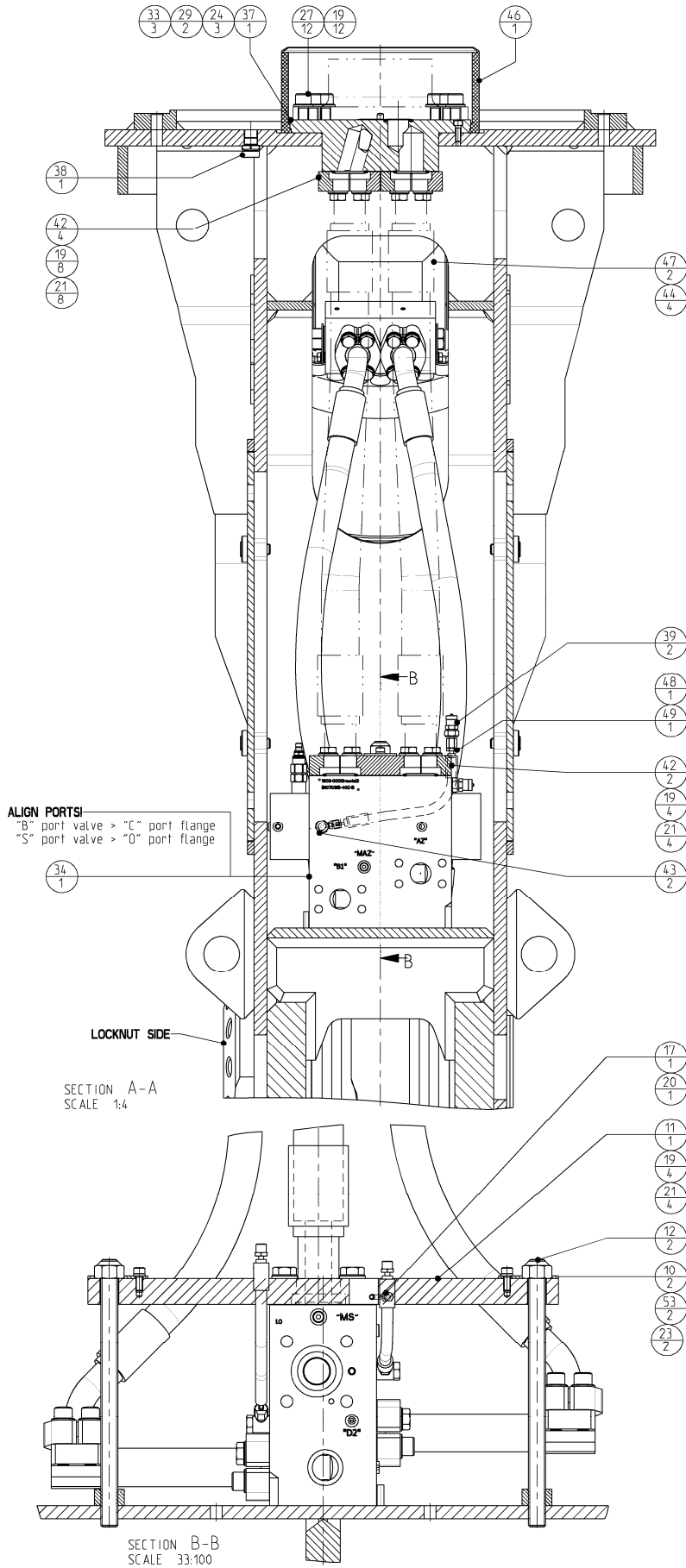
Parts marked with a letter in column "Set" can be ordered as a set with Itemnumber

Set	Description	Itemnumber
a	Shearblade set	407989
-	Service kit	408659
-	Tip (repair)	408666
-	Open/Close connection kit	507230
-	N.A. fitting kit (JIC)	406403

Concrete Crusher

Page	2	of	38
Date	September 2021		
Product type	DCC-50-A		
Number	DCC050A155AAB6-E		

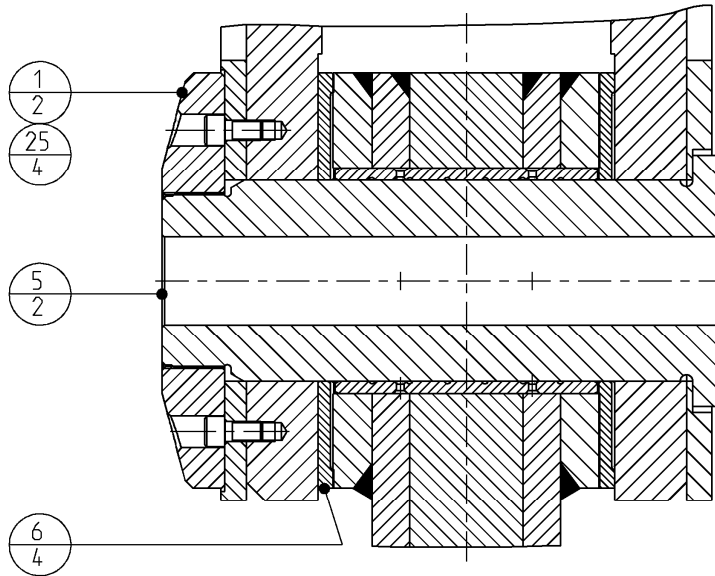
Housing GP



Concrete Crusher

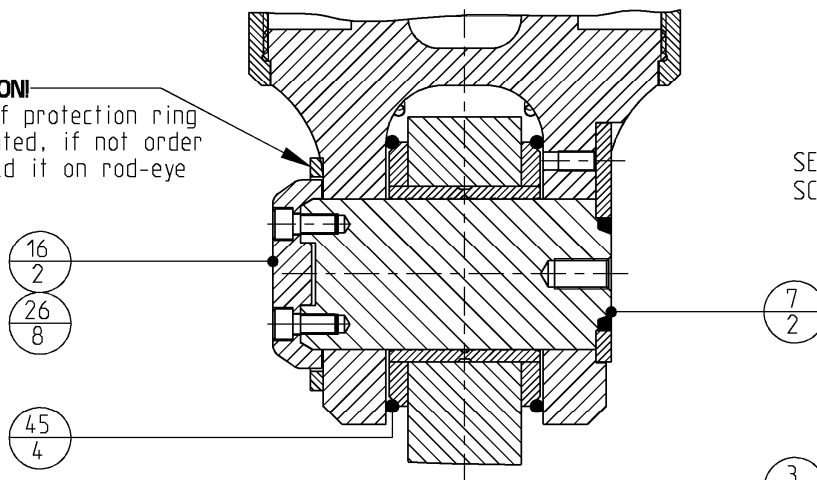
Page	3	of	38
Date	September 2021		
Product type	DCC-50-A		
Number	DCC050A155AAB6-E		

Housing GP

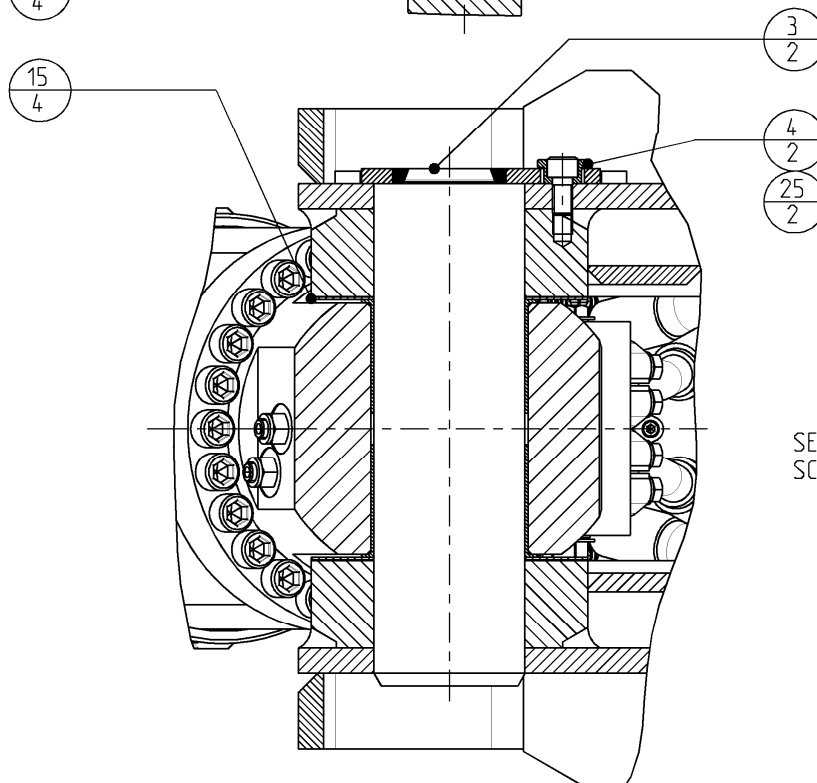


SECTION C-C
SCALE 1:4

ATTENTION!
check if protection ring
is mounted, if not order
and weld it on rod-eye

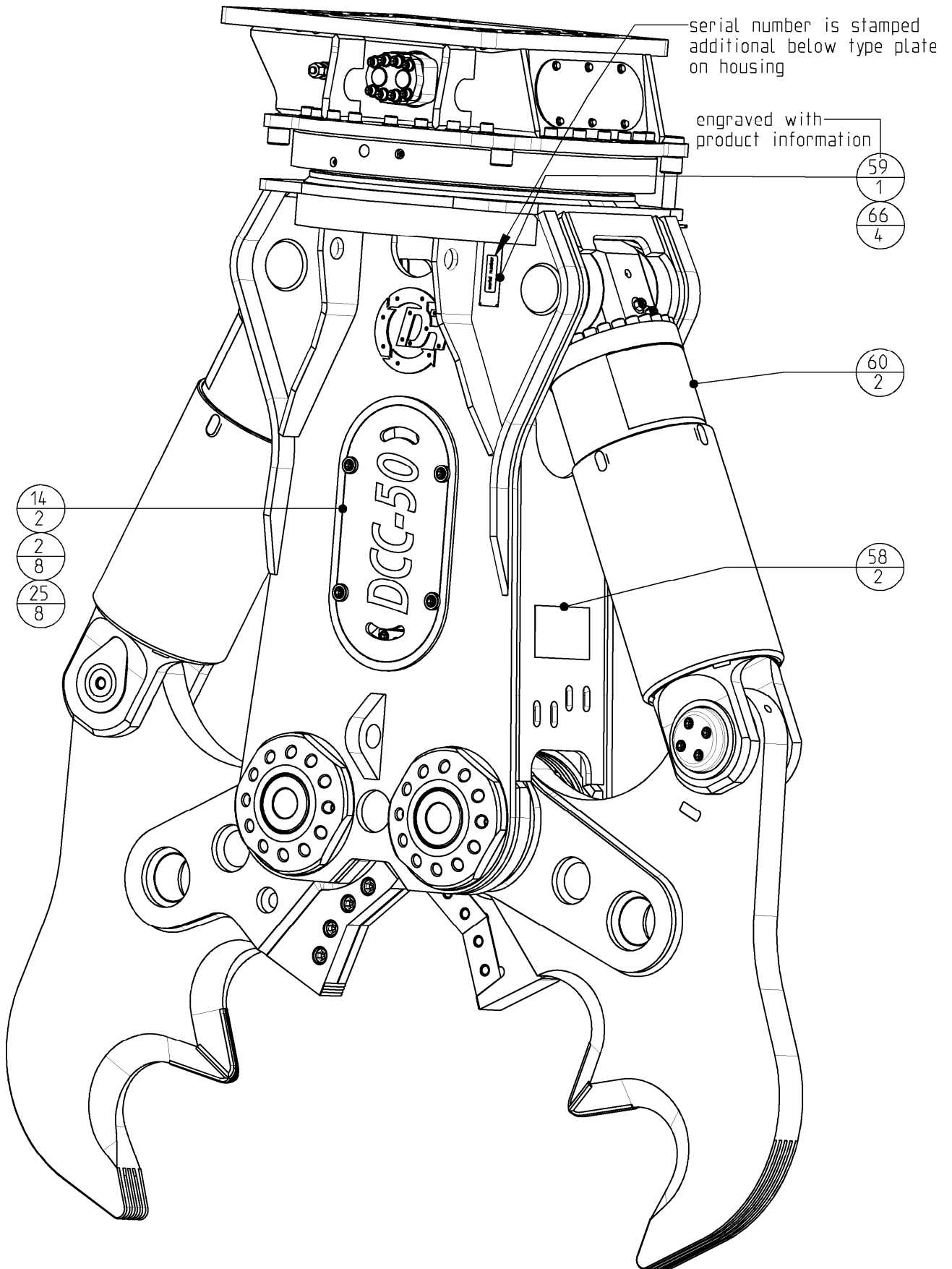


SECTION D-D
SCALE 1:4



SECTION E-E
SCALE 1:4

Concrete Crusher	Page	4	of	38
	Date	September 2021		
	Product type	DCC-50-A		
Housing GP	Number	DCC050A155AAB6-E		



Concrete Crusher

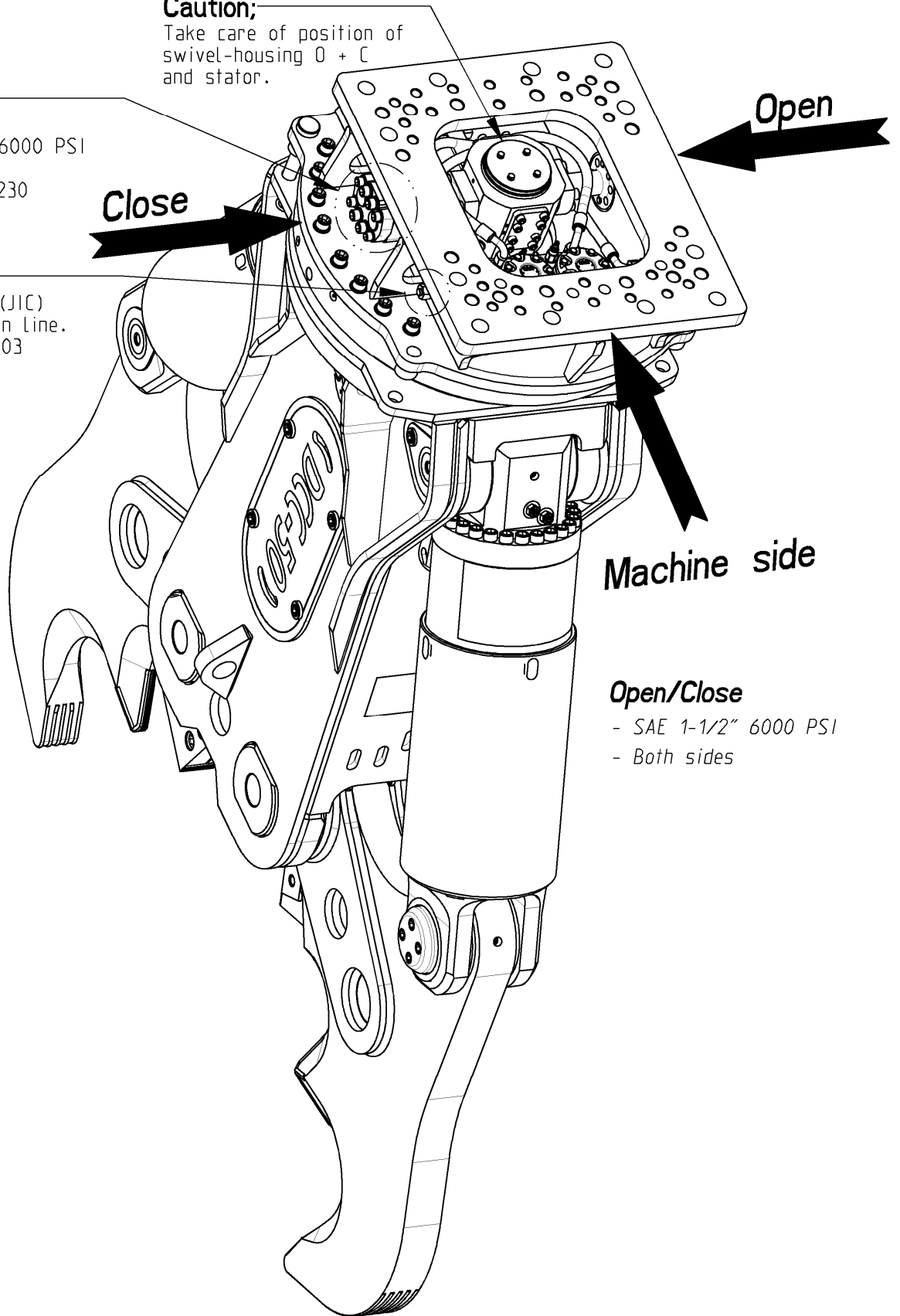
Page	5	of	38
Date	September 2021		
Product type	DCC-50-A		
Number	DCC050A155AAB6-E		

Housing GP

Caution;
Take care of position of swivel-housing O + C and stator.

Optional;
Connection kit
2x SAE 1-1/4" 6000 PSI
for open close.
Flange kit: 507230

Optional;
N.A. fitting kit (JIC)
for rotation/drain line.
Fitting kit: 406403



Machine side

Open/Close
- SAE 1-1/2" 6000 PSI
- Both sides

Concrete Crusher	<i>Page</i>	6	<i>of</i>	38
	<i>Date</i>	September 2021		
	<i>Product type</i>	DCC-50-A		
Housing GP	<i>Number</i>	DCC050A155AAB6-E		

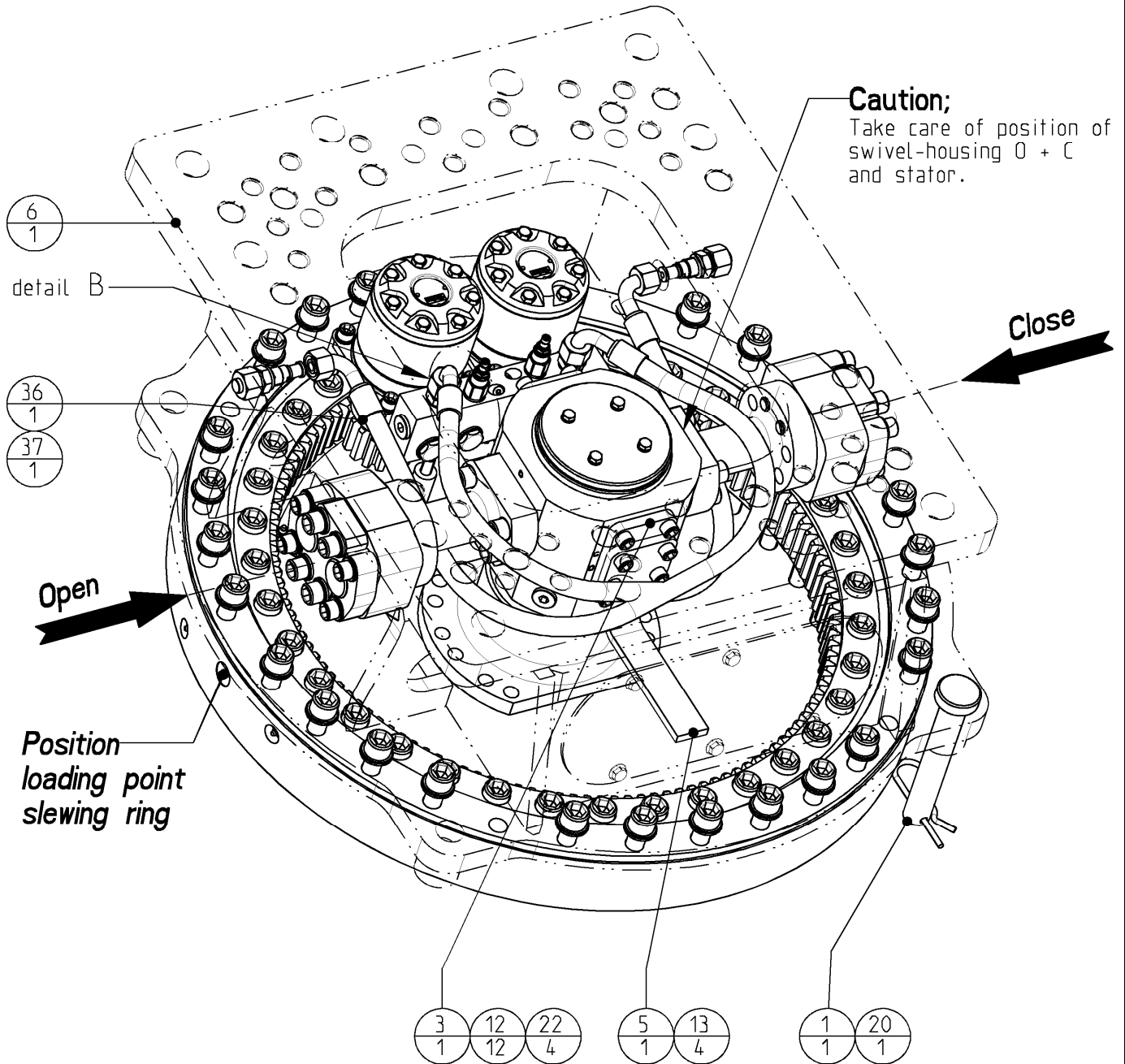
--	--	--	--	--	--	--	--	--

Set	POS	PARTNUMBER	PARTNAME	QT
	66	130059276	Screw - drive	4
	65	122000163	Washer normal	32
a	64	508205	Shim - diamond	4
a	63	508204	Shim - diamond	4
a	62	508203	Shim - diamond	8
a	61	508202	Shearblade - diamond	4
	60	508162_R160	Sticker	2
	59	508115	Type plate	1
	58	508113	Sticker	2
	57	507482	Flange pipe 1-1/4" 6000 PSI	4
	56	507052	Bushing	2
	55	507005	Bushing	2
	54	506084	Bolts Hexagon	16
	53	506073	Lockwasher - Nordlock	2
	52	506005	Hex. socket head cap screw	24
	51	505287_RM_DCC50	Hydr.Hose asm. 1" SAE 100R15	2
	50	505286_RM_DCC50	Hydr.Hose asm. 1" SAE 100R15	2
	49	505236_DCC50-2	Hydr. hose asm. 1/4" SAE 100R2AT	1
	48	505236_DCC50-1	Hydr. hose asm. 3/16" SAE 100R2AT	1
	47	505217_RM_DCC50	Hydr. hose asm. 1/2" SAE 100R15	2
	46	504217	Tube + V-ring	1
	45	504186	O-ring	4
	44	504097	Seal - flange	4
	43	503612	Banjo Coupling	2
	42	503505	SAE split flange	6
	41	503504	SAE split flange	16
	40	503503	SAE split flange	8
	39	501936	Test-point	2
	38	501935	Plug - breather	1
	37	501913	Base flange - DCC	1
	36	501880	Hydraulic Cylinder GP	2
	35	501795	Valve GP	2
	34	501781	Speed valve GP	1
	33	500603	Seal - flange	11
	32	500601	Seal - flange	8
	31	500600	Seal - flange	2
	30	500560	Grease - nipple	6
	29	500540	Springtype straight pin	2
a	28	500281	Hex. socket head cap screw	8
	27	500263	Hex. socket head cap screw	12
	26	500259	Hex. socket head cap screw	8
	25	500258	Hex. socket head cap screw	14
	24	500223	Hex. socket head cap screw	3
	23	500222	Hex. socket head cap screw	2
	22	500205	Bolts Hexagon	8
	21	500147	Bolts Hexagon	16
	20	500100	Bolts Hexagon	1
	19	500054	Washer HV	28
	18	500053	Washer HV	16
	17	500001	Nut Hexagon	1
	16	409672	Endcap - pin Ø120 spec.	2
	15	408702	Shim	4
	14	408671	Cover Large DCC	2
	13	408500	Rotatorhead GP	1
	12	408485	Bolt asm.	2
	11	408484	Lockplate - valve	1
	10	408483	Lockplate	2
	9	408010	Jaw machined	2
	8	407990	Housing machined	1
	7	407819	Pin asm.	2
	6	407799	Spacer	4
	5	407793	Pin	2
	4	407787	Lock bushing	2
	3	407777	Pin asm.	2
	2	405104	Lock bushing	8
	1	404896	Locknut	2

Concrete Crusher

Page	7	of	38
Date	September 2021		
Product type	DCC-50-A		
Number	408500-03		

Rotatorhead GP



Note A
Mount with Cyberbound TT62 according instruction at the end of this partsbook.

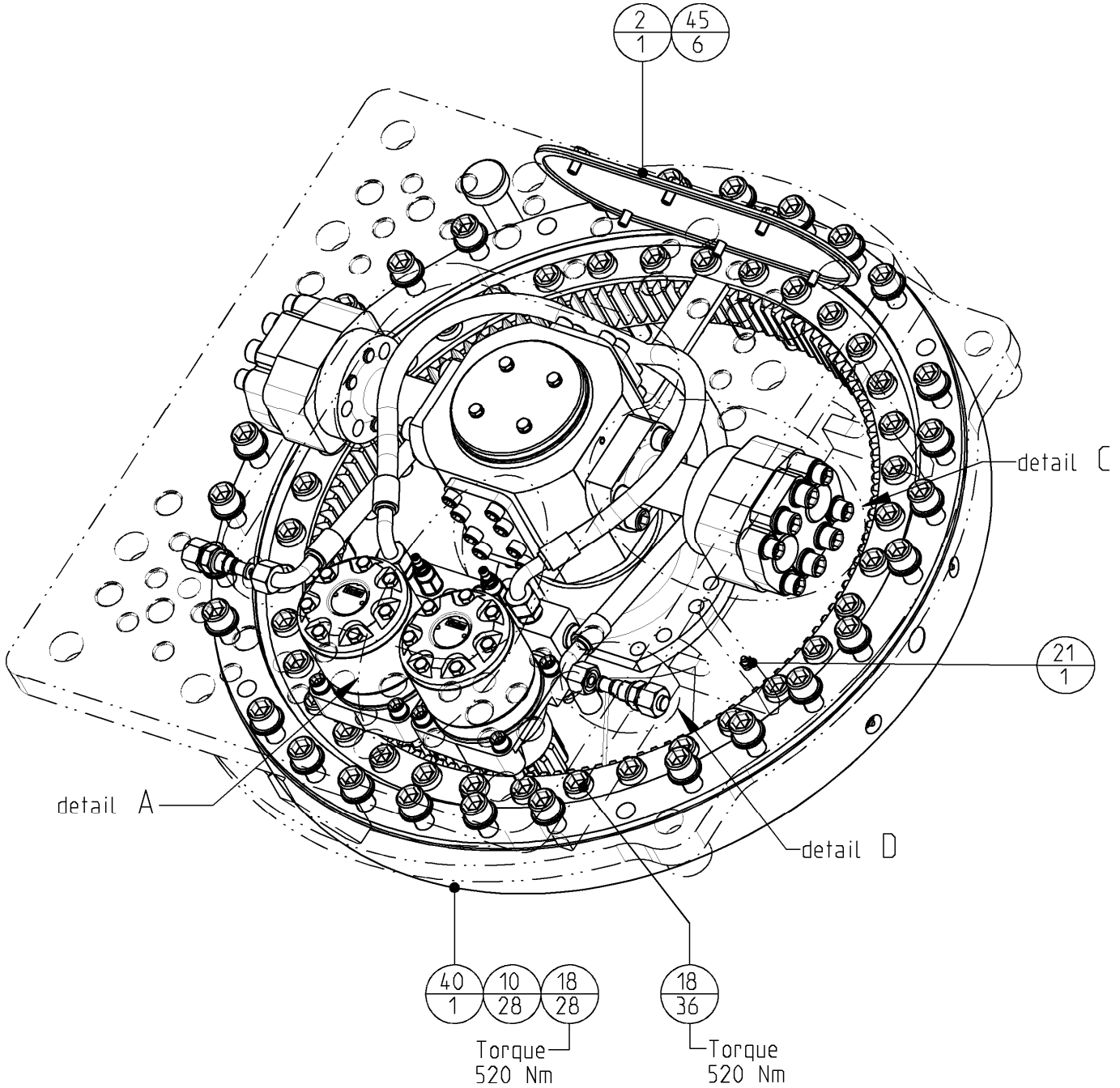
Note B
Optional open/close connection kit
Flange kit: 507230

Note C
Optional N.A. fitting kit (JIC)
Fitting kit: 406403

Concrete Crusher

Page	8	of	38
Date	September 2021		
Product type	DCC-50-A		
Number	408500-03		

Rotatorhead GP

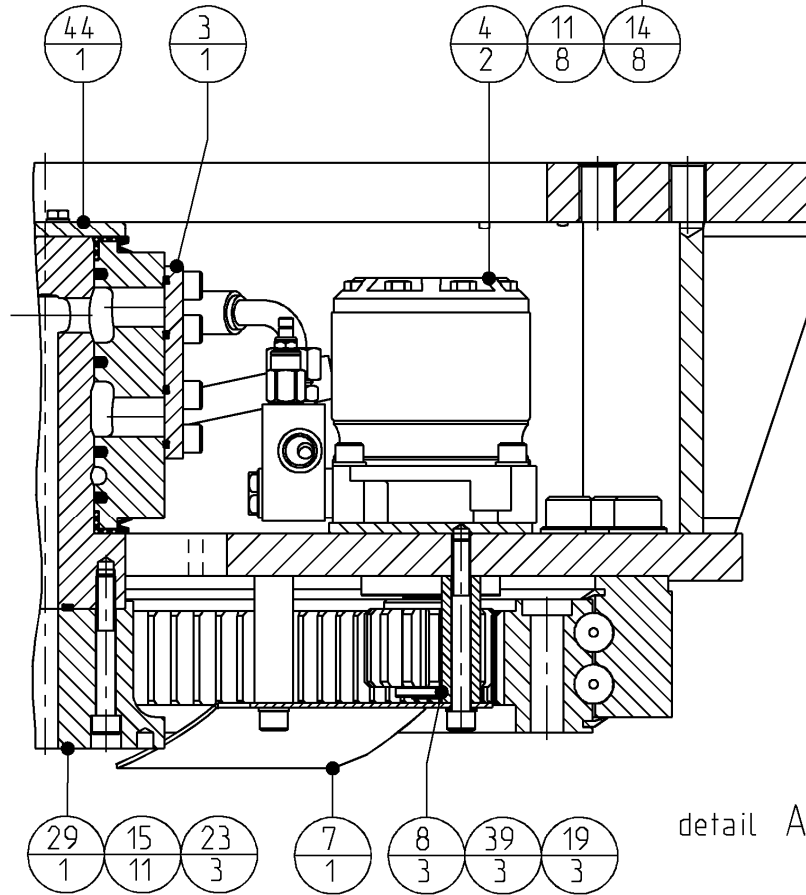


Concrete Crusher

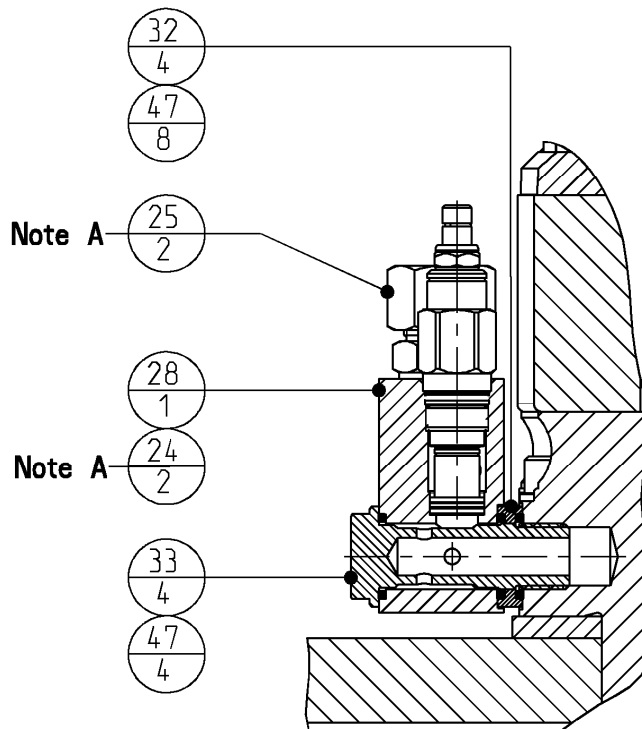
Page	9	of	38
Date	September 2021		
Product type	DCC-50-A		
Number	408500-03		

Rotatorhead GP

- Torque 109 Nm
- Loctite 270



detail A

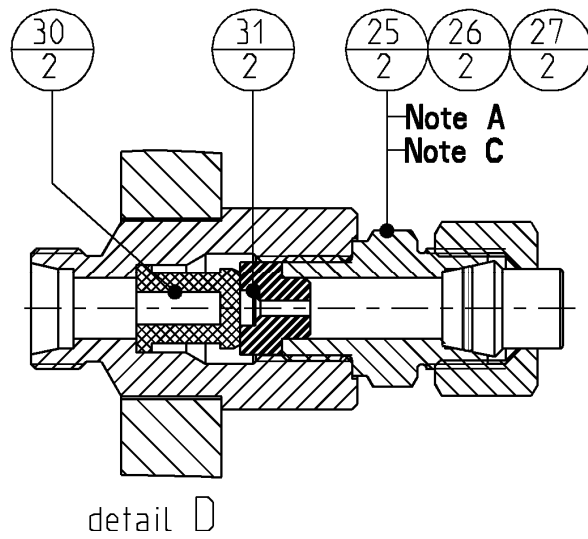
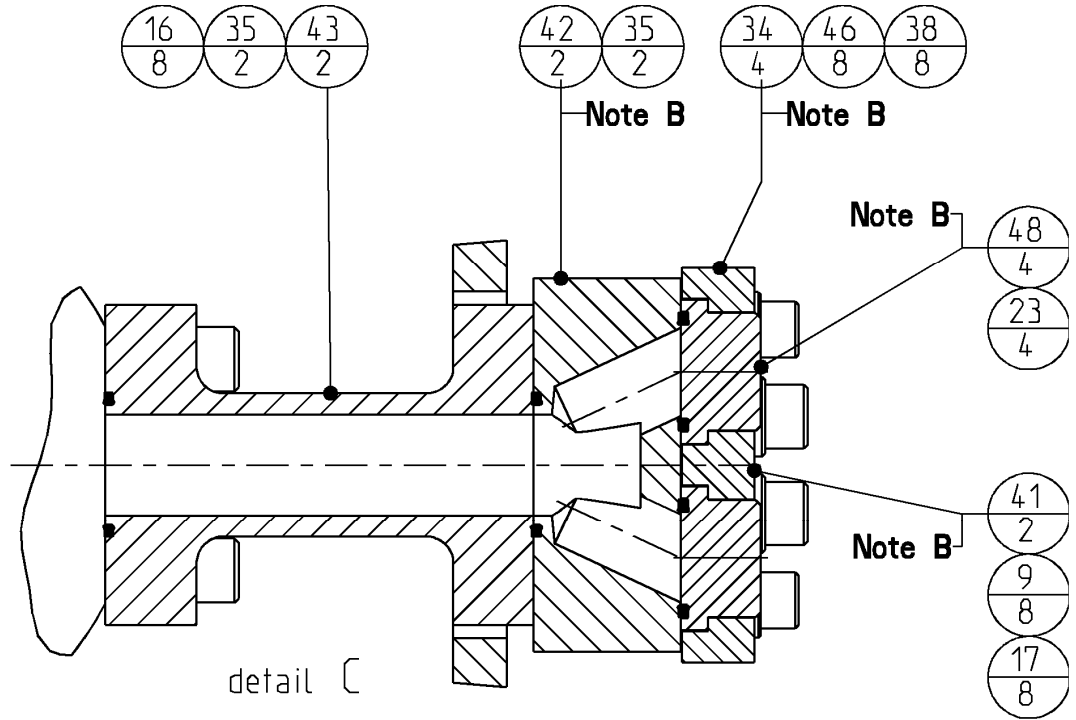


detail B

Concrete Crusher

Page	10	of	38
Date	September 2021		
Product type	DCC-50-A		
Number	408500-03		

Rotatorhead GP



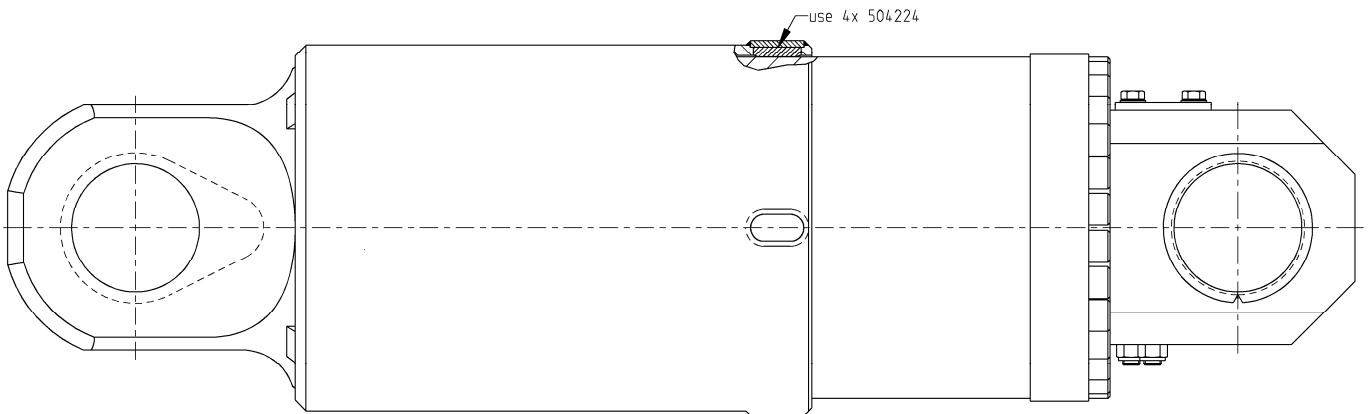
Concrete Crusher	Page	11	of	38
	Date	September 2021		
	Product type	DCC-50-A		
Rotatorhead GP	Number	408500-03		

POS	PARTNUMBER	PARTNAME	QT
25	500693	Male stud coupling	4
24	500652	Blanking end	2
23	500603	Seal - flange	7
22	500601	Seal - flange	4
21	500560	Grease - nipple	1
20	500504-2	Locking pin (hair-pin)	1
19	500303	Hex. socket head cap screw	3
18	500278	Hex. socket head cap screw	64
17	500268	Hex. socket head cap screw	8
16	500263	Hex. socket head cap screw	8
15	500255	Hex. socket head cap screw	11
14	500252	Hex. socket head cap screw	8
13	500250	Hex. socket head cap screw	4
12	500248	Hex. socket head cap screw	12
11	500068	Washer spring	8
10	500055	Washer HV	28
9	500054	Washer HV	8
8	408519	Spacer sleeve	3
7	408518	Blade - greasing	1
6	408501	Rotatorhead asm. machined	1
5	408057	Plate - Lock	1
4	407855	Motor GP	2
3	407706	SAE blind flange	2
2	406332	Cover asm.	1
1	405866	Lockpin	1
48	291065241	SAE stop	4
47	257066194	Kantseal	12
46	122000163	Washer normal	8
45	120013828	Bolts Hexagon - self locking	6
44	507260	Swivel GP	1
43	507202	Flange pipe 1-1/2" 6000 PSI	2
42	507201	Double flange 1-1/4" 6000 PSI	2
41	507200	SAE split flange - double	2
40	507000	Slewing Ring; Internal Gear	1
39	506055	Lockwasher - Nordlock	3
38	506005	Hex. socket head cap screw	8
37	505183_V65_1	Hydr. hose asm. 1/2" SAE 100 R2AT	1
36	505182_V65_1	Hydr. hose asm. 1/2" SAE 100 R2AT	1
35	504097	Seal - flange	4
34	503504	SAE split flange	4
33	502907	Banjo bolt	4
32	502903	Spacer	4
31	502001	Drossel - ring	2
30	502000	Filter	2
29	501911	Intermediate flange	1
28	501733	Valve GP	1
27	500945	Blanking plug	2
26	500940	Nut coupling	2

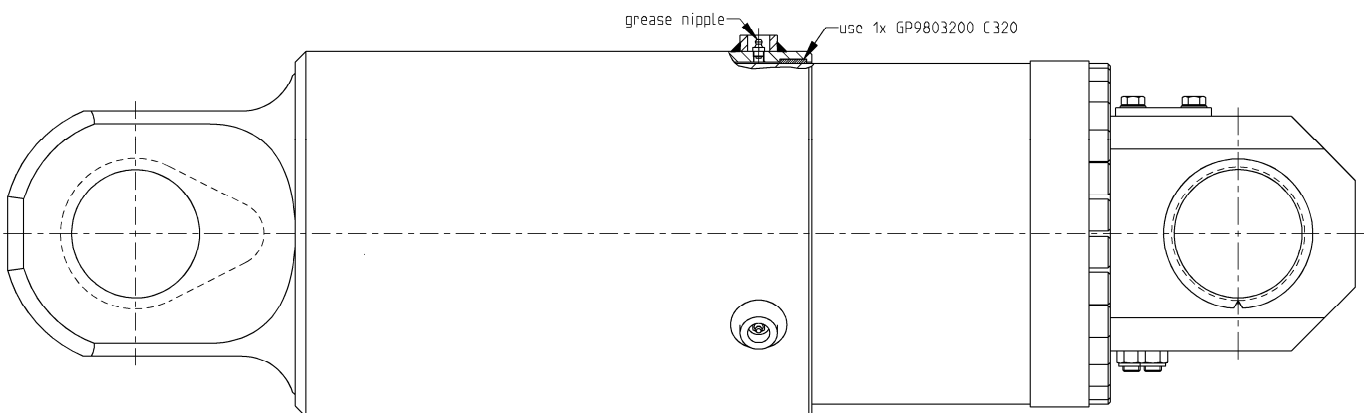
Concrete Crusher	Page	12	of	38
	Date	September 2021		
	Product type	DCC-50-A		
Cylinder GP	Number	501880		

To order the right wear parts check which cylinder is used

Current version
Without grease nipple



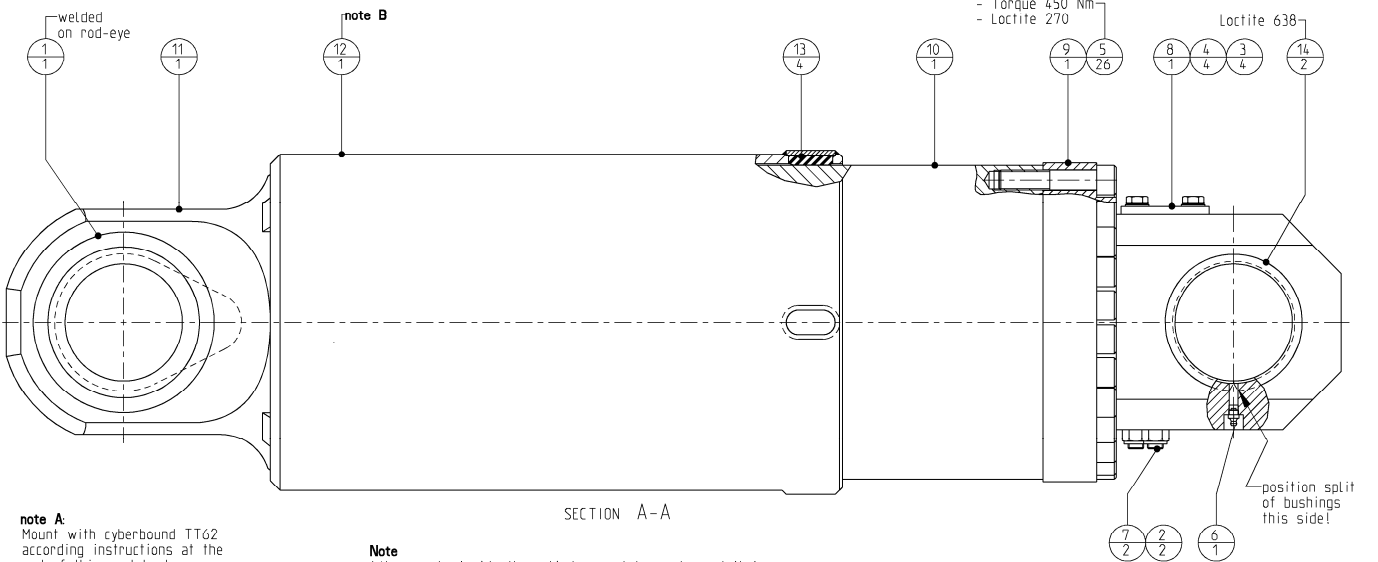
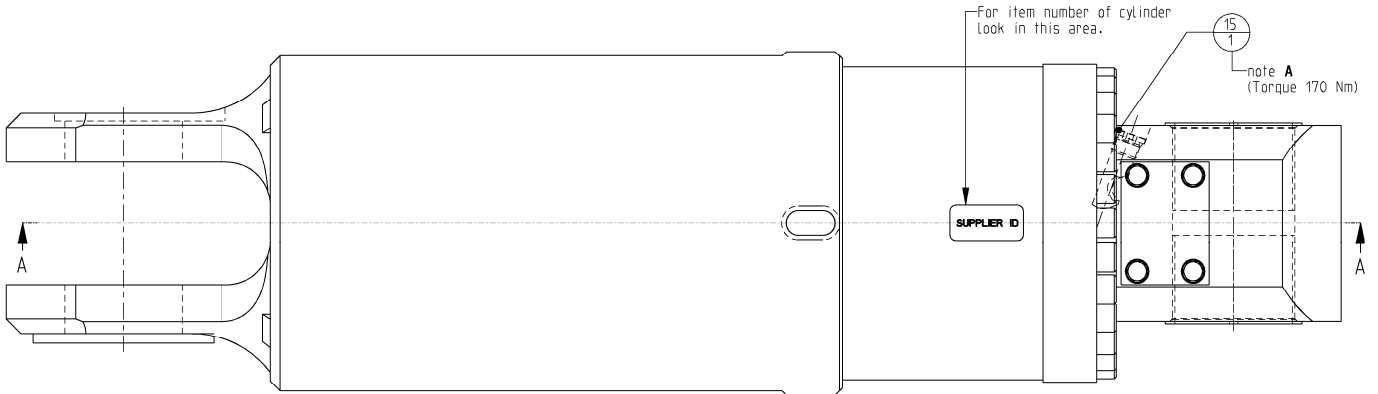
Former version
with grease nipple



Concrete Crusher

Page	13	of	38
Date	September 2021		
Product type	DCC-50-A		
Number	501880-08		

Cylinder GP



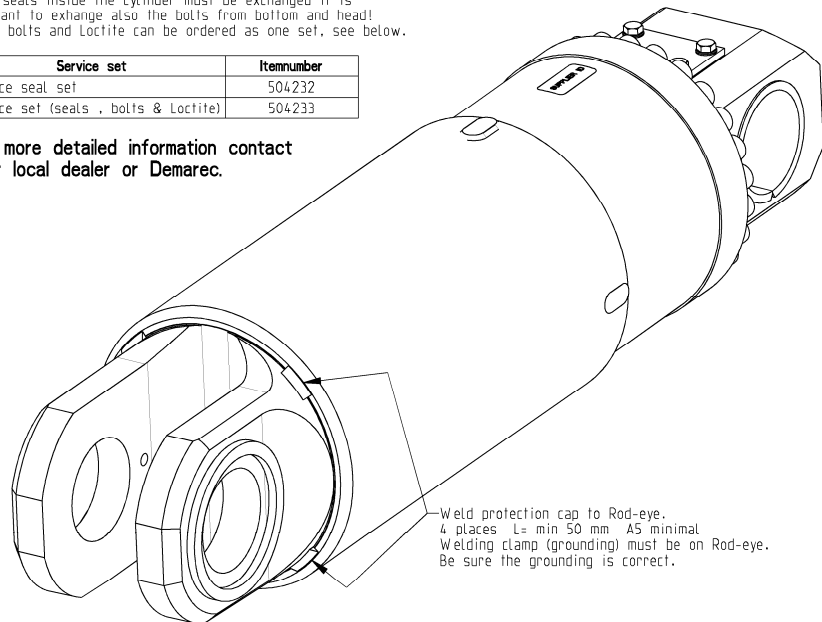
note A:
Mount with cyberbound TT62 according instructions at the end of this partsbook.

note B:
mounting order protection cap:
- Lubricate thread with Loctite LB 8150.
- Turn cap on the head of cylinder fully to the end, use cams to tighten.

Note
When seals inside the cylinder must be exchanged it is important to exchange also the bolts from bottom and head! Seals, bolts and Loctite can be ordered as one set, see below.

Service set	Itemnumber
Service seal set	504232
Service set (seals , bolts & Loctite)	504233

For more detailed information contact your local dealer or Demarec.



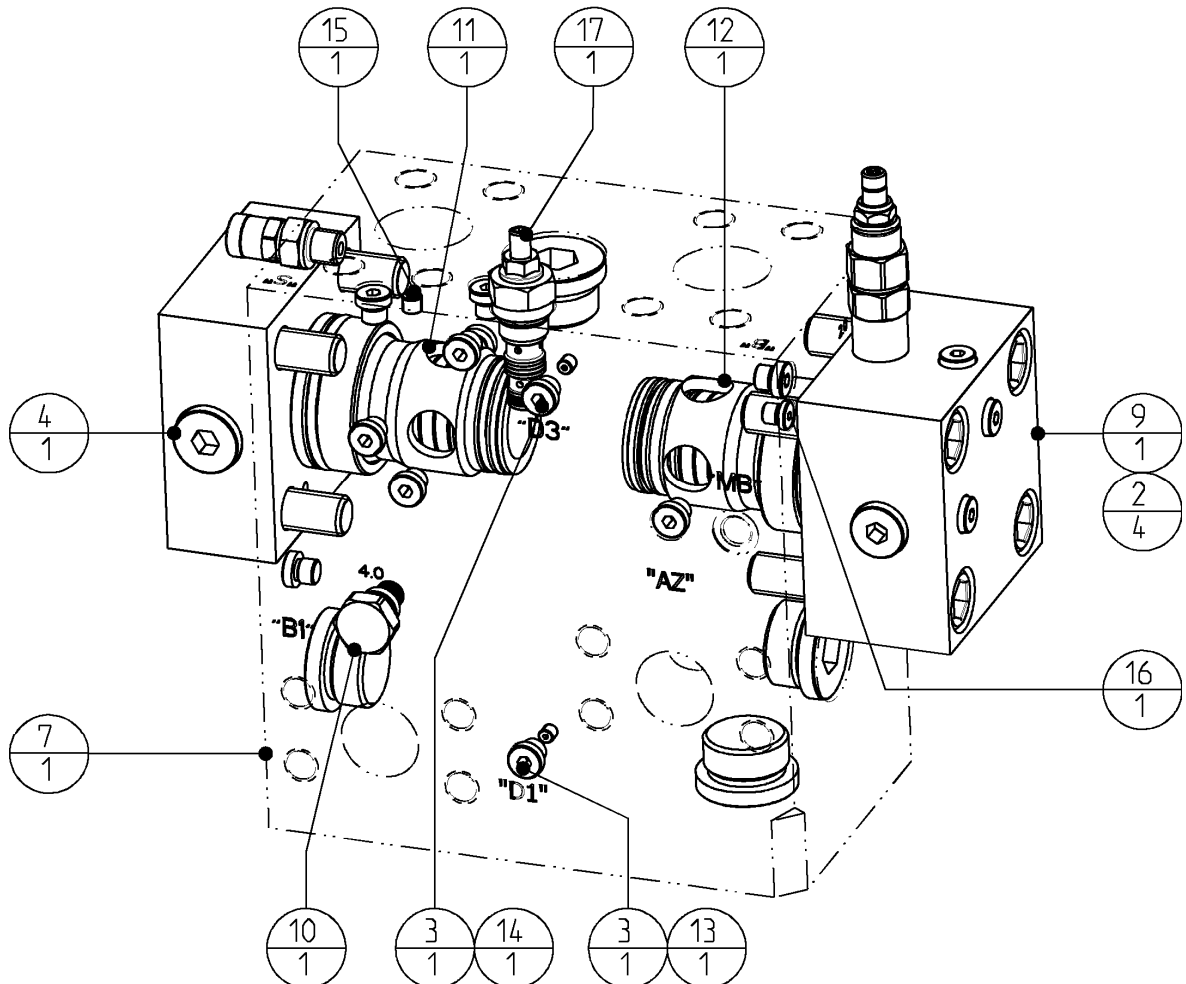
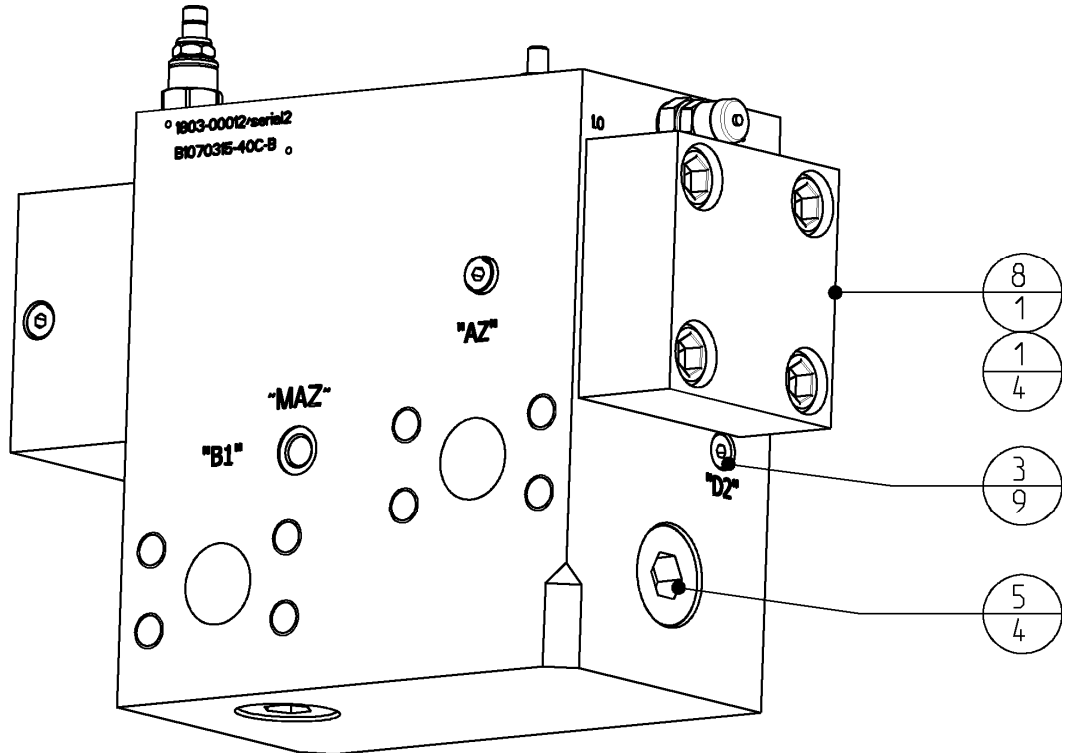
Concrete Crusher	<i>Page</i>	14	<i>of</i>	38
	<i>Date</i>	September 2021		
	<i>Product type</i>	DCC-50-A		
Cylinder GP	<i>Number</i>	501880-08		

15	290058185	Blanking end ISO 6149	1
14	507051	Bushing - collar	2
13	504224	Slide pad	4
12	501886	Protecion Cap asm.	1
11	501882	Rod GP	1
10	501881	Tube - housing	1
9	501862	Cylinder - bottom	1
8	501844	Blanking cover	1
7	501408	Bleeding screw GP	2
6	500560	Grease - nipple	1
5	500277	Hex. socket head cap screw	52
4	500131	Bolts Hexagon	4
3	500043	Washer normal	4
2	500031	Nut Hexagon self-locking	2
1	409664	Ring - protection	1
POS	PARTNUMBER	PARTNAME	QT

Concrete Crusher

Page	15	of	38
Date	September 2021		
Product type	DCC-50-A		
Number	501781-04		

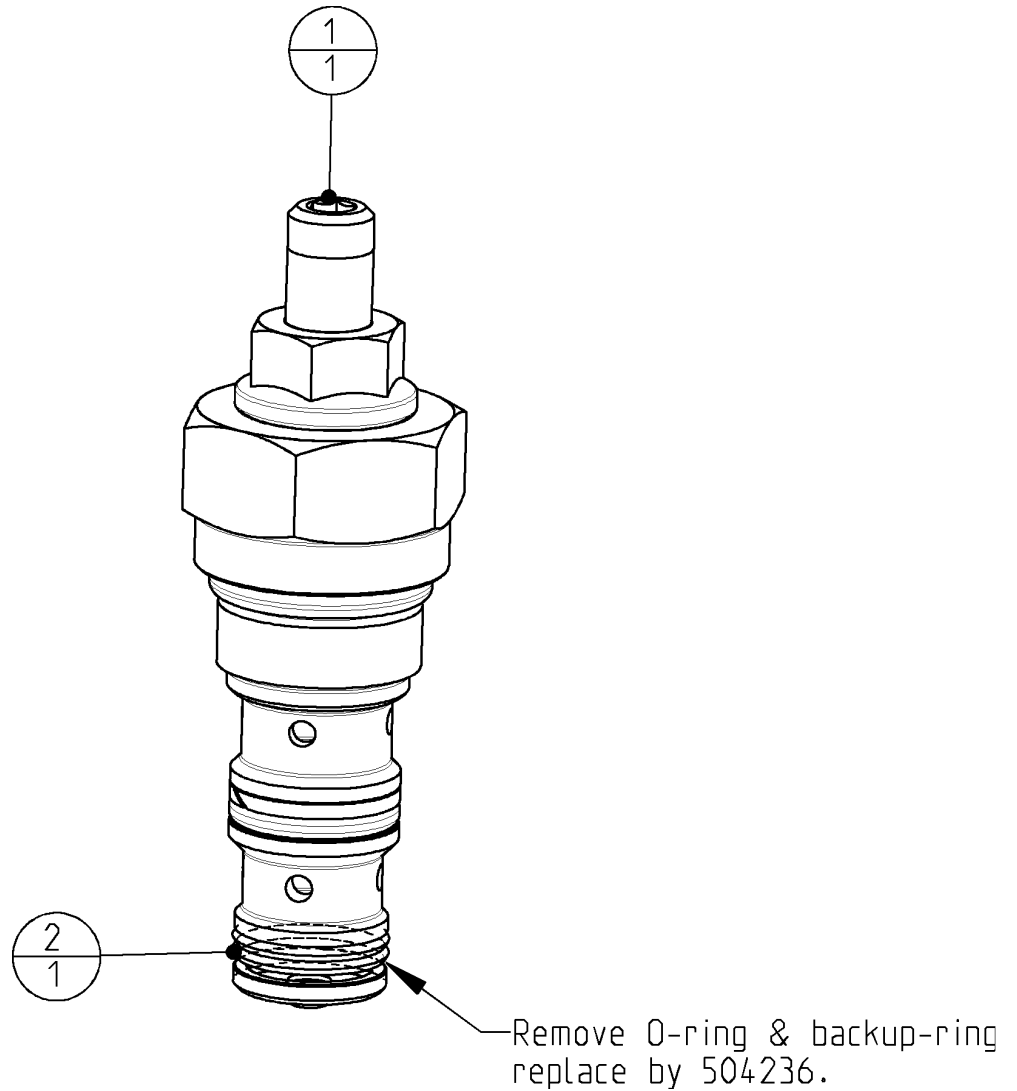
Valve GP



Concrete Crusher	<i>Page</i>	16	<i>of</i>	38
	<i>Date</i>	September 2021		
	<i>Product type</i>	DCC-50-A		
Valve GP	<i>Number</i>	501781-04		

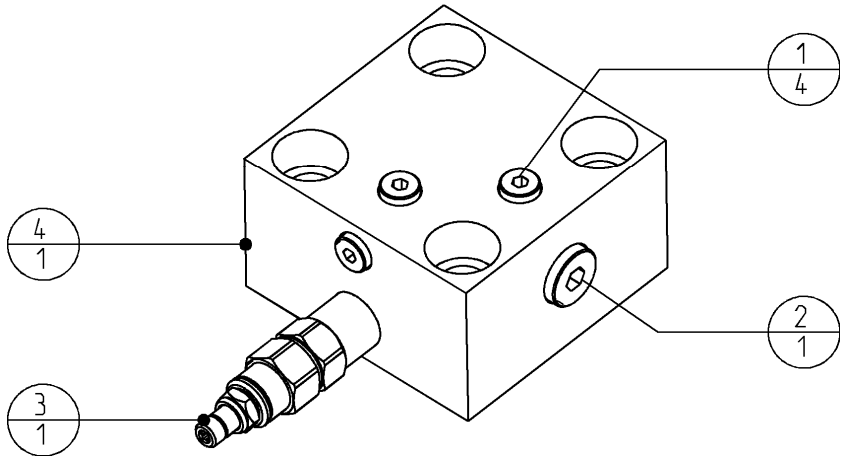
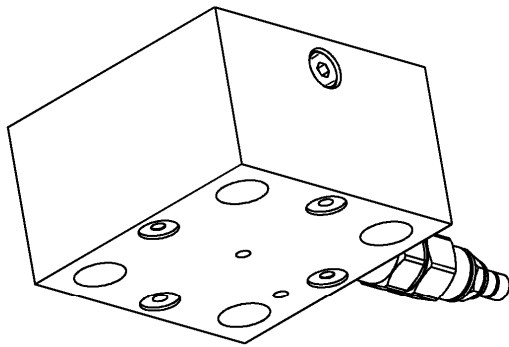
17	507391	Priority cartridge valve	1
16	503904	Blanking end SAE J514	1
15	502132	Hex.socket plug-tappered	1
14	501929	Restrictor - plug	1
13	501928	Restrictor - plug	1
12	501789	Cartridge slip-in NG32	1
11	501788	Cartridge slip-in NG32	1
10	501787	Valve - check	1
9	501784	Cover GP NG32	1
8	501783	Cover NG32	1
7	501782	Housing	1
6	500740	Test-point	1
5	500654	Blanking end	4
4	500652	Blanking end	1
3	500649	Blanking end	11
2	500264	Hex. socket head cap screw	4
1	500262	Hex. socket head cap screw	4
POS	PARTNUMBER	PARTNAME	QT

Concrete Crusher	Page	17	of	38
	Date	September 2021		
	Product type	DCC-50-A		
Cartridge – priority valve	Number	507391-00		



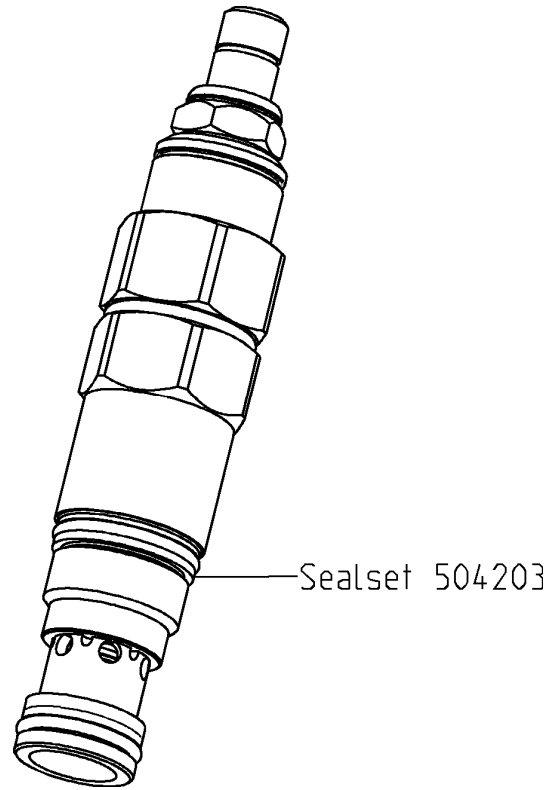
2	504236	Static seal	1
1	501538_REBUILD	Priority cartridge valve	1
POS	PARTNUMBER	PARTNAME	QT

Concrete Crusher	Page	18	of	38
	Date	September 2021		
	Product type	DCC-50-A		
Cover GP	Number	501784-00		

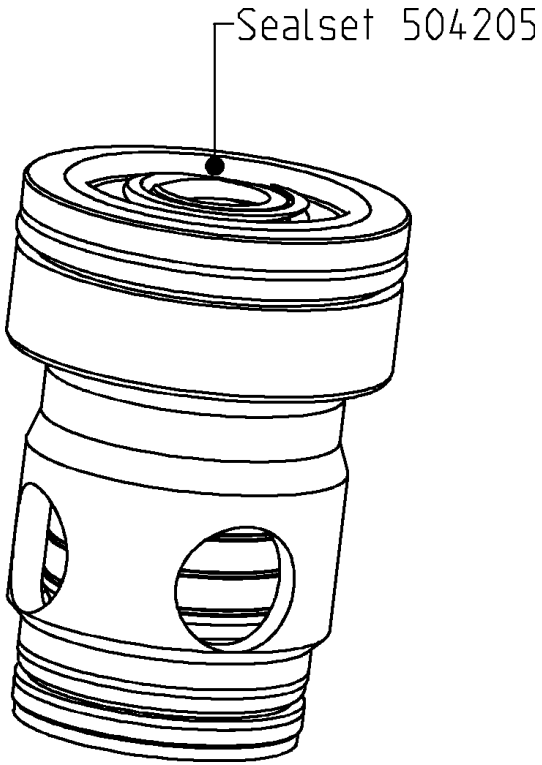


4	501785	Cover NG32 (modified)	1
3	501537	Cartridge - sequence valve	1
2	500651	Blanking end	1
1	500649	Blanking end	4
POS	PARTNUMBER	PARTNAME	QT

Concrete Crusher	<i>Page</i>	19	<i>of</i>	38
	<i>Date</i>	September 2021		
	<i>Product type</i>	DCC-50-A		
Cartridge - sequence valve	<i>Number</i>	501537-00		



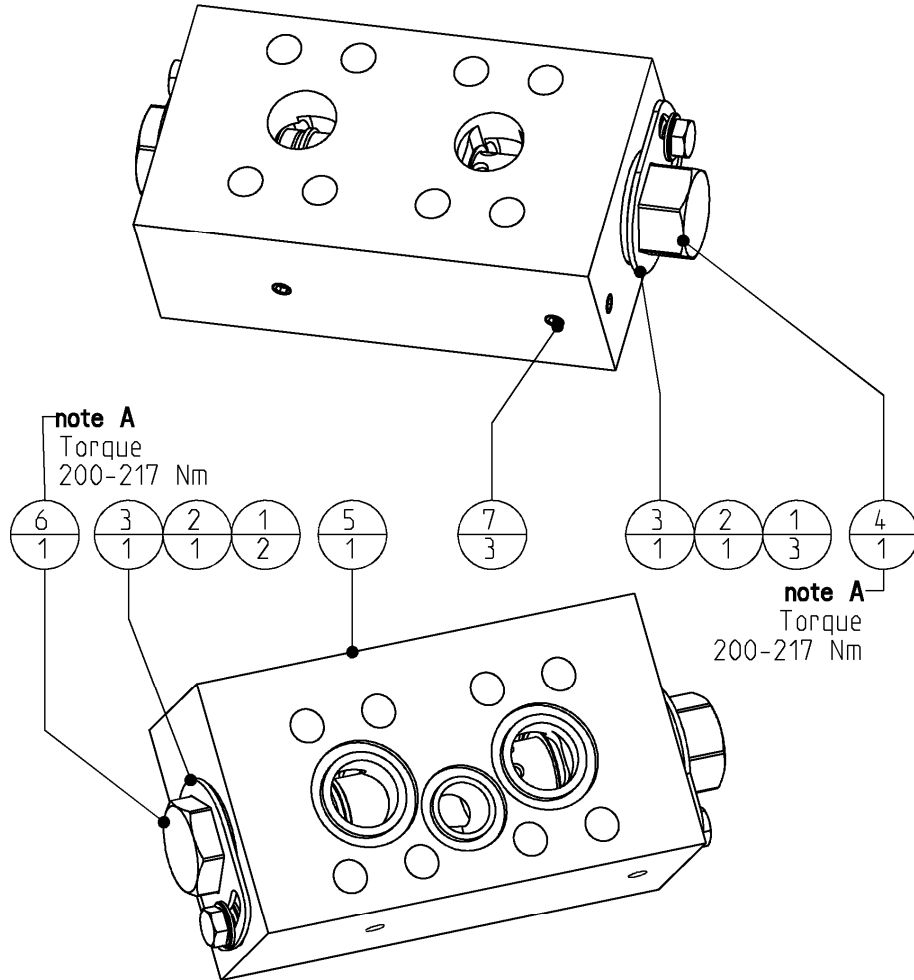
Concrete Crusher	<i>Page</i>	20	<i>of</i>	38
	<i>Date</i>	September 2021		
	<i>Product type</i>	DCC-50-A		
Cartridge - slip-in valve	<i>Number</i>	501788-00		



Concrete Crusher	Page	21	of	38
	Date	September 2021		
	Product type	DCC-50-A		
Cartridge - slip-in valve	Number	501789-00		



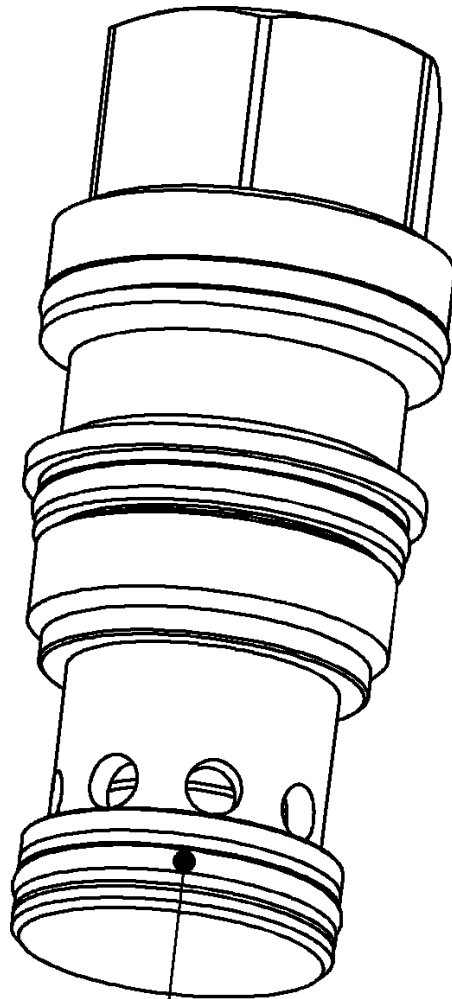
Concrete Crusher	Page	22	of	38
	Date	September 2021		
	Product type	DCC-50-A		
DemaPower valve GP	Number	501795-01		



note A:
Mount with cyberbound TT62 according instruction at the end of the partsbbok.

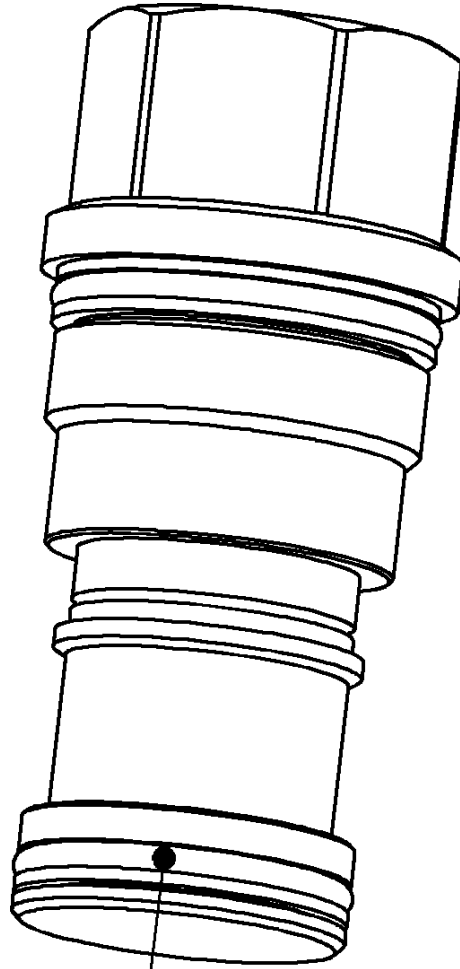
7	502132	Hex.socket plug-tappered	3
6	502117	Cartridge - check valve	1
5	501796	Valve - housing	1
4	501378	Cartridge - check valve	1
3	501347	Lockplate Key 32	2
2	500103	Bolts Hexagon	2
1	500041	Washer normal	5
POS	PARTNUMBER	PARTNAME	QT

Concrete Crusher	<i>Page</i>	23	<i>of</i>	38
	<i>Date</i>	September 2021		
	<i>Product type</i>	DCC-50-A		
Cartridge – check valve	<i>Number</i>	501378-02		



Sealset 504024

Concrete Crusher	<i>Page</i>	24	<i>of</i>	38
	<i>Date</i>	September 2021		
	<i>Product type</i>	DCC-50-A		
Cartridge – check valve	<i>Number</i>	502117-02		

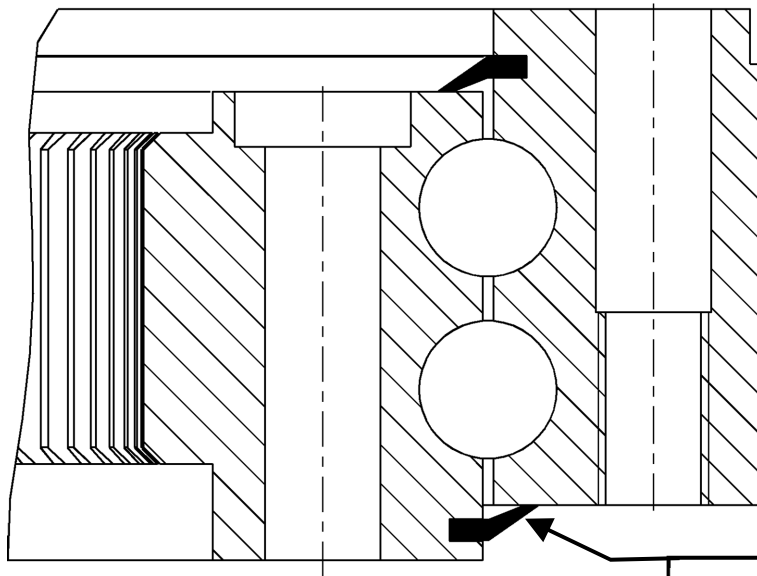
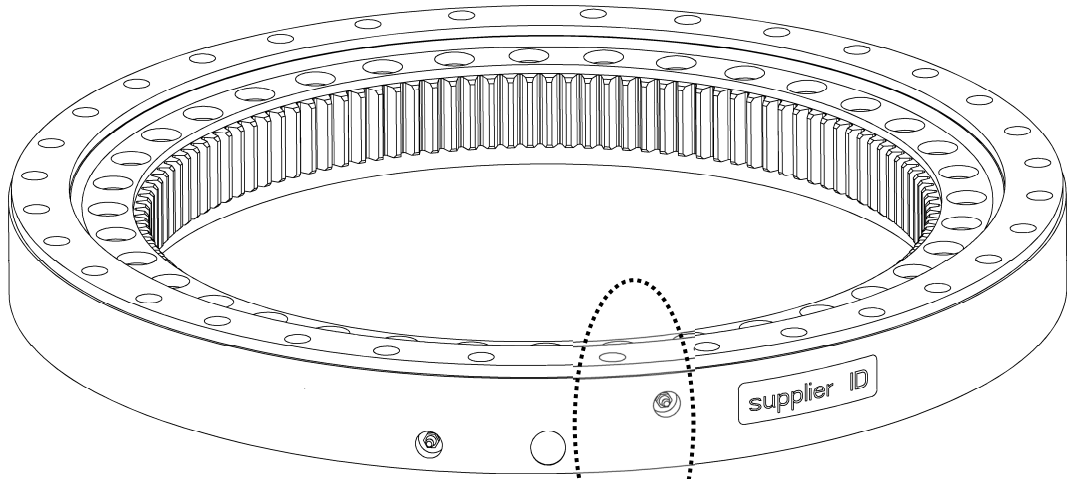


Sealset 504024

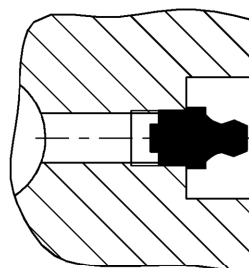
Concrete Crusher

Page	25	of	38
Date	September 2021		
Product type	DCC-50-A		
Number	507000-01		

Slewing ring

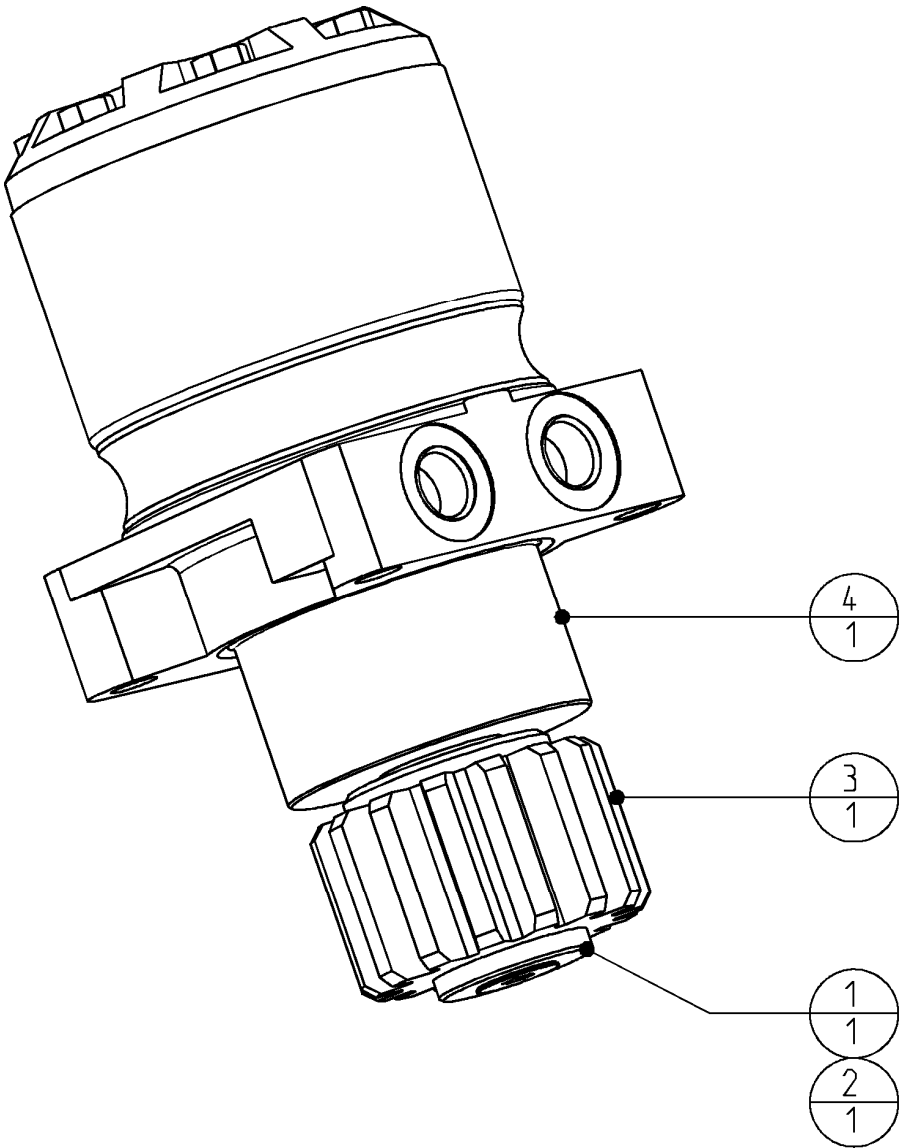


**2x seal 256060902
mount with Loctite 480**



**2x grease nipple
500560**

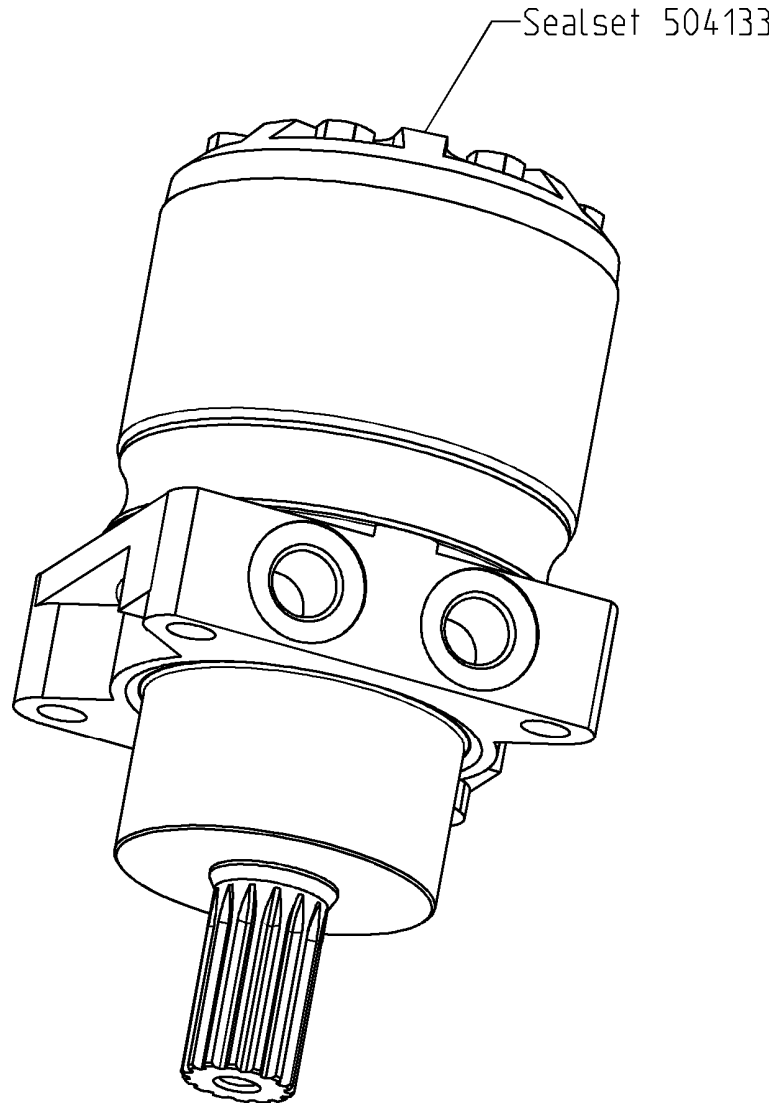
Concrete Crusher	Page	26	of	38
	Date	September 2021		
	Product type	DCC-50-A		
Hydraulic motor GP	Number	407855-02		



Loctite 638

4	501801	Hydraulic motor	1
3	501099	Pinion	1
2	500347	Flat countersunk head cap screws	1
1	407692	Washer	1
POS	PARTNUMBER	PARTNAME	QT

Concrete Crusher	Page	27	of	38
	Date	September 2021		
	Product type	DCC-50-A		
Hydraulic motor	Number	501801-00		



Concrete Crusher

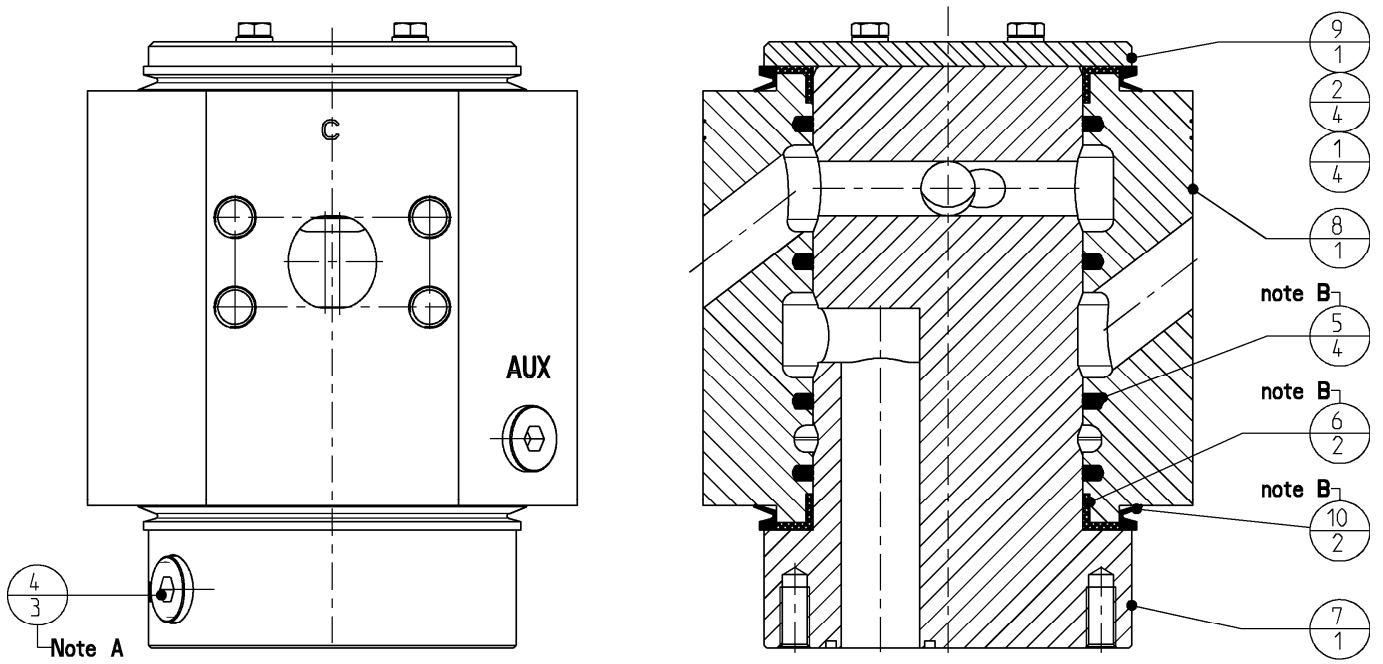
Page **28** of **38**

Date **September 2021**

Product type **DCC-50-A**

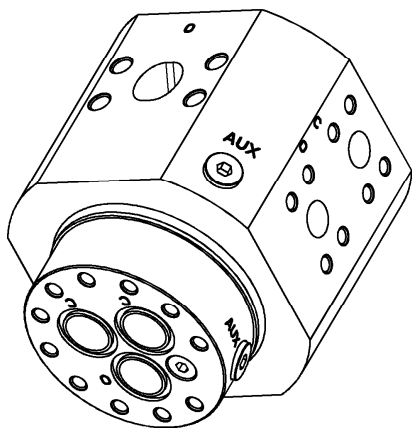
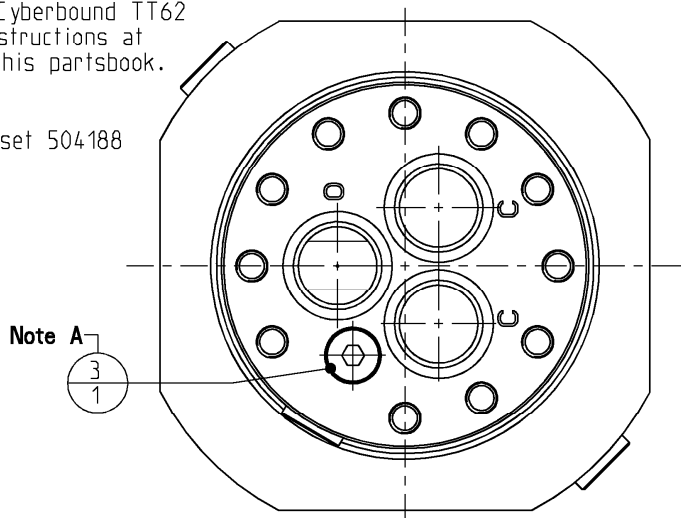
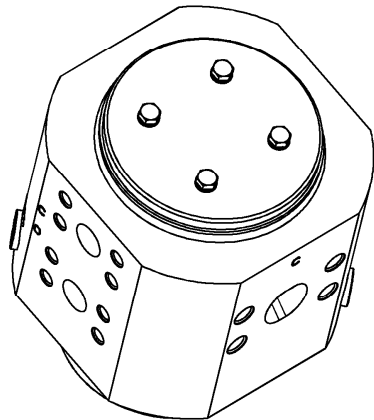
Swivel GP

Number **507260-00**



note A
Mount with Cyberbound TT62 according instructions at the end of this partsbook.

note B
Part of sealset 504188

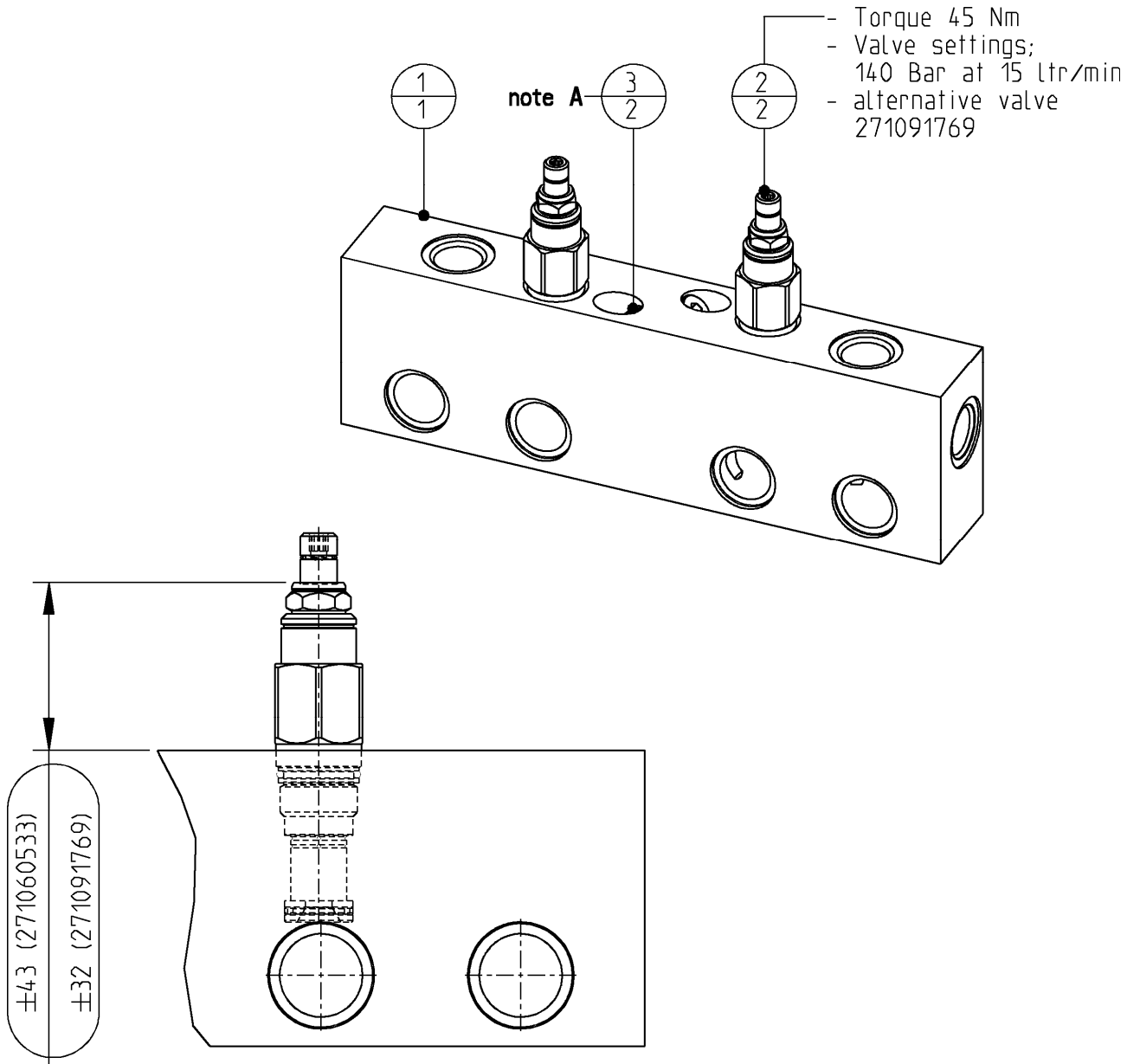


10	504054_VG_D140	Seal	2
9	507263	Cover	1
8	507262	Housing	1
7	507261	Stator	1
6	504222	Axial ring	2
5	504206	Roto seal	4
4	500652	Blanking end	3
3	500651	Blanking end	1
2	500105	Bolts Hexagon	4
1	500066	Washer spring	4
POS	PARTNUMBER	PARTNAME	QT

Concrete Crusher

Page	29	of	38
Date	September 2021		
Product type	DCC-50-A		
Number	501733-01		

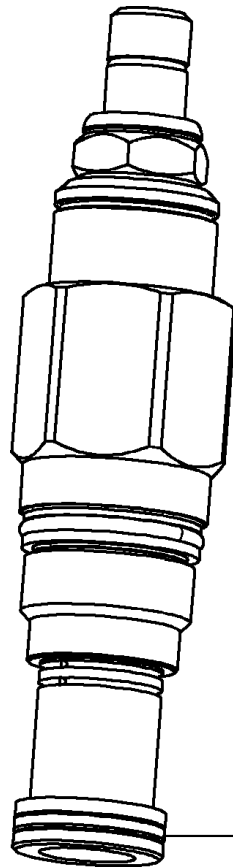
Valve GP



Note A:
 Mount with Cyberbound TT62
 according instructions at the end
 of this partsbook.

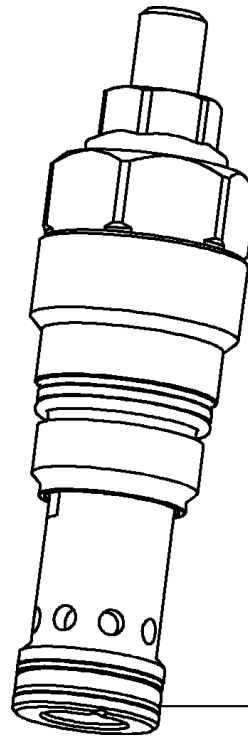
3	290066544	Blanking end ISO 6149	2
2	271060533	Cartridge- relief valve	2
1	501734	Baseplate	1
POS	PARTNUMBER	PARTNAME	QT

Concrete Crusher	<i>Page</i>	30	<i>of</i>	38
	<i>Date</i>	September 2021		
	<i>Product type</i>	DCC-50-A		
Cartridge – relief valve	<i>Number</i>	271060533-C		



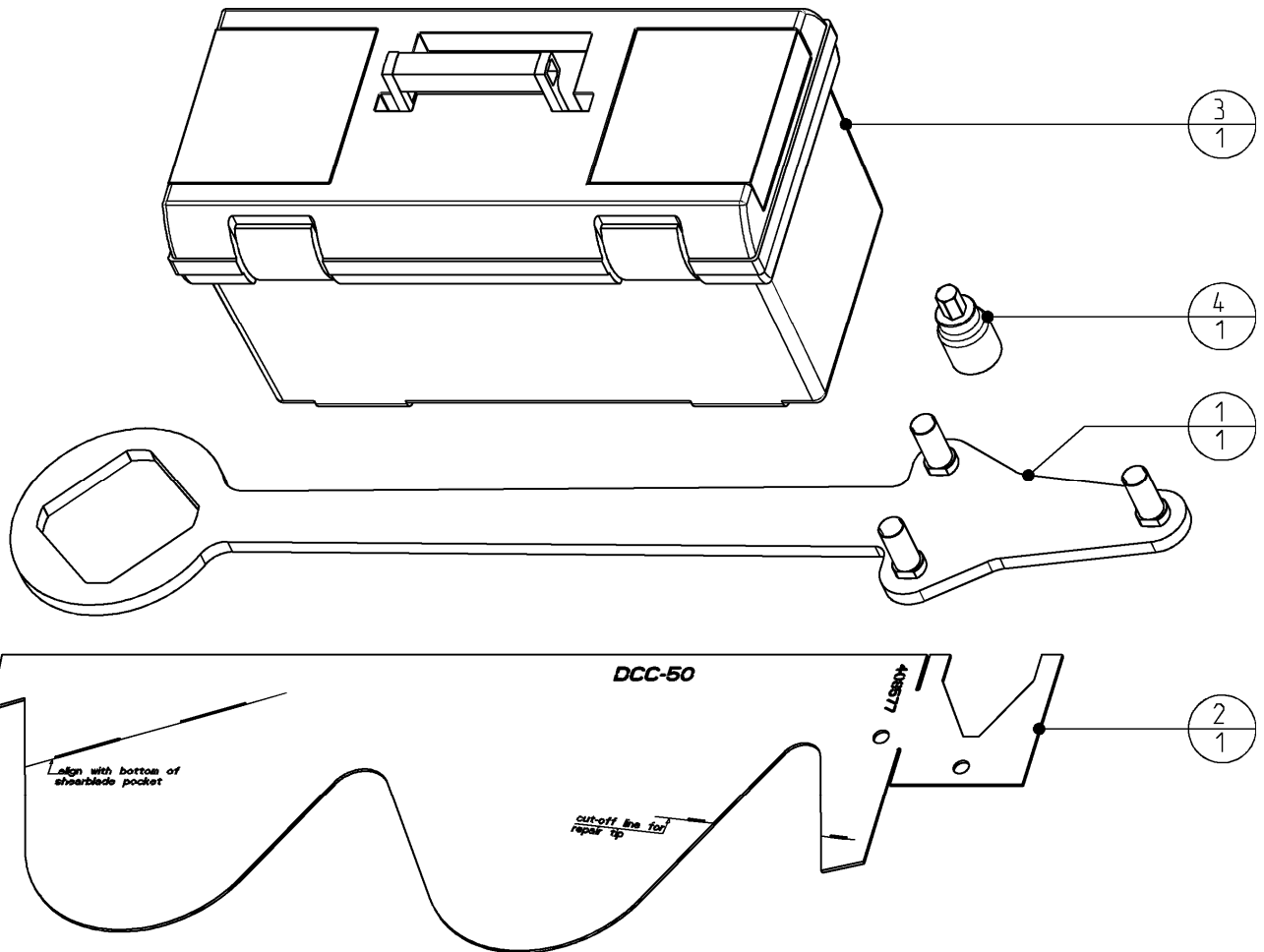
Sealset 504203

Concrete Crusher	<i>Page</i>	31	<i>of</i>	38
	<i>Date</i>	September 2021		
	<i>Product type</i>	DCC-50-A		
Cartridge – relief valve	<i>Number</i>	271091769-A		



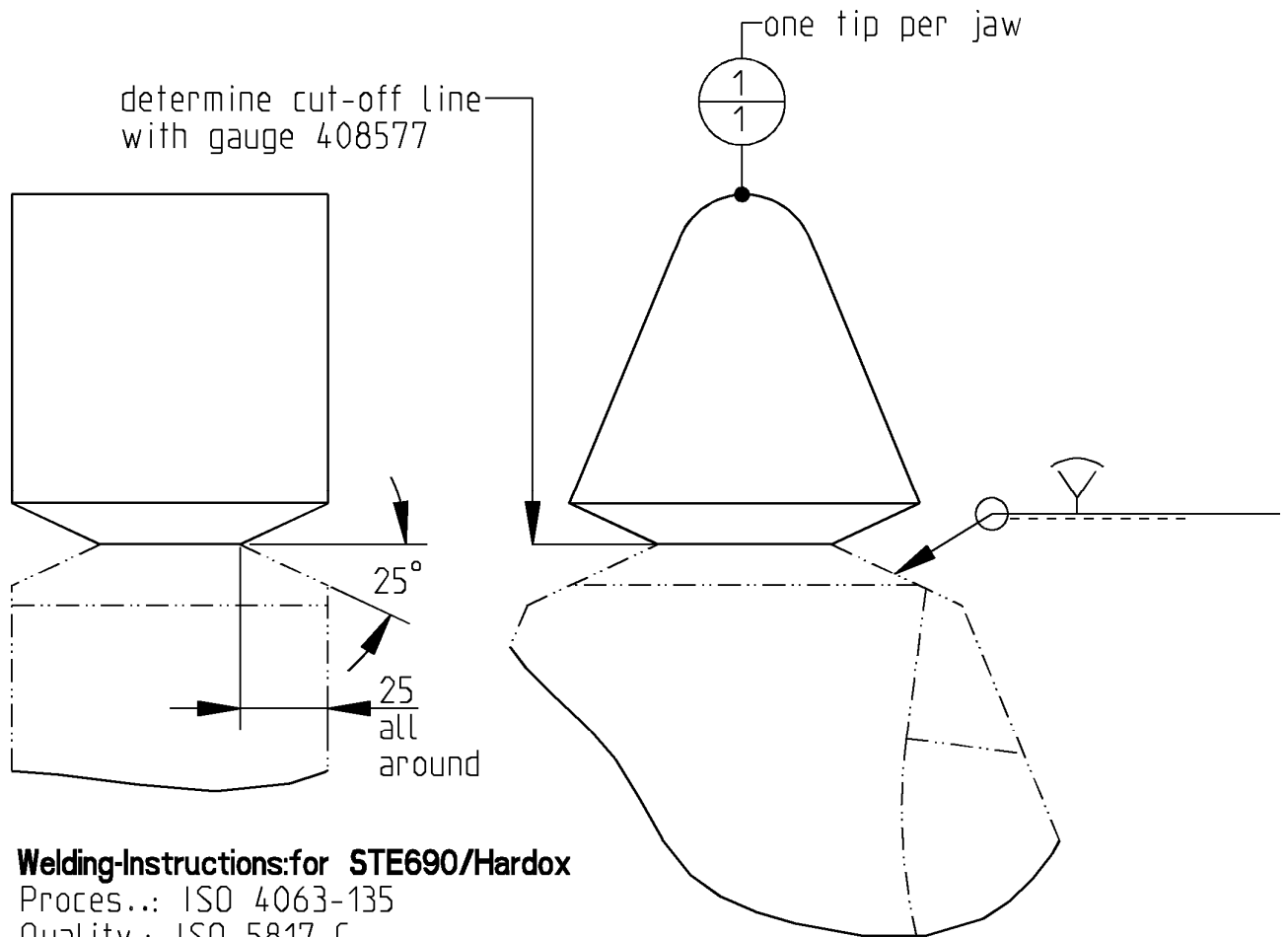
Sealset 504213

Concrete Crusher	Page	32	of	38
	Date	September 2021		
	Product type	DCC-50-A		
Service kit (optional)	Number	408659-00		



4	192072798	Screwdriver bit socket	1
3	508136	Toolbox GP	1
2	408577	Gauge DCC-50 jaw	1
1	404984	Key GP	1
POS	PARTNUMBER	PARTNAME	QT

Concrete Crusher	Page	33	of	38
	Date	September 2021		
	Product type	DCC-50-A		
Tip repair (optional)	Number	408666-00		



Welding-Instructions:for STE690/Hardox

Proces.: ISO 4063-135
 Quality.: ISO 5817-C
 Position: ISO 6947-PA/PB
 Material: Lastek 10015
 AWS A5.28: ER100 S-1

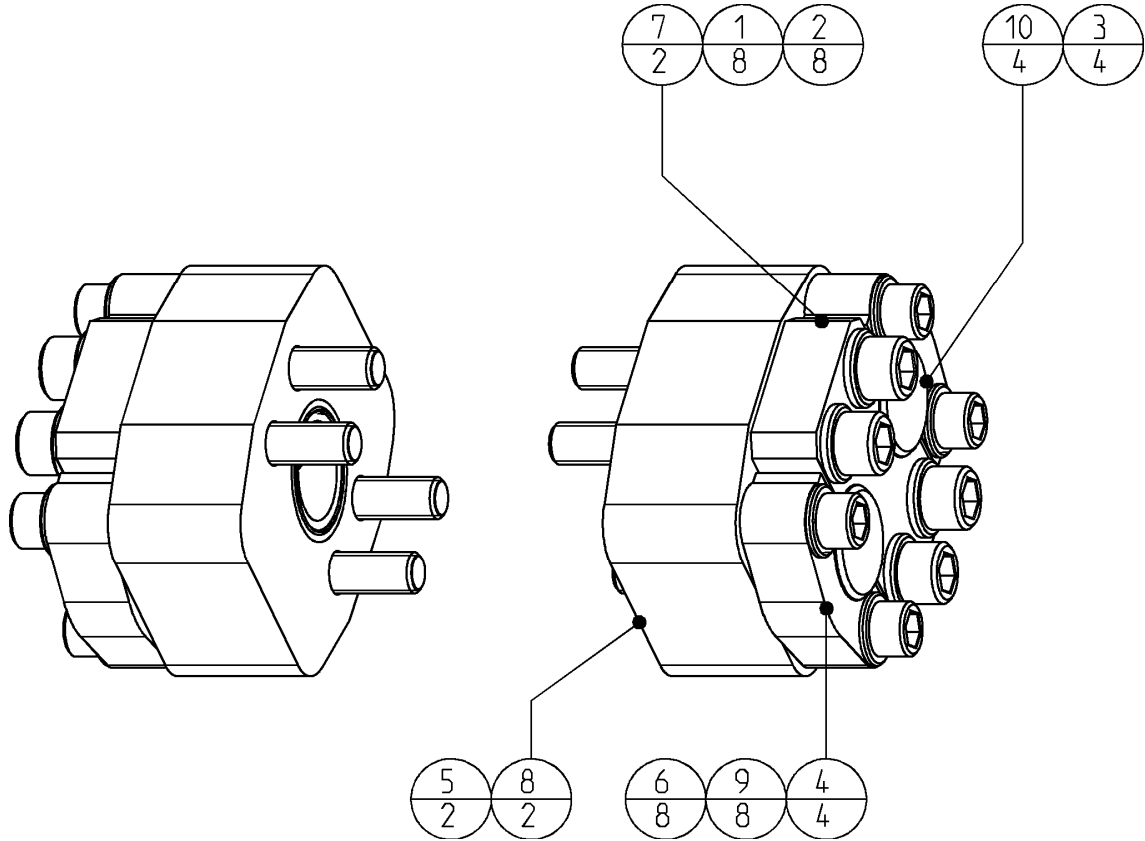
- Pre-heat welding seams 100-150°C
- All welds not specified: a6
- After welding, gradually cooling down

1	408666	DCC-50 tip-repair	1
POS	PARTNUMBER	PARTNAME	QT

Concrete Crusher

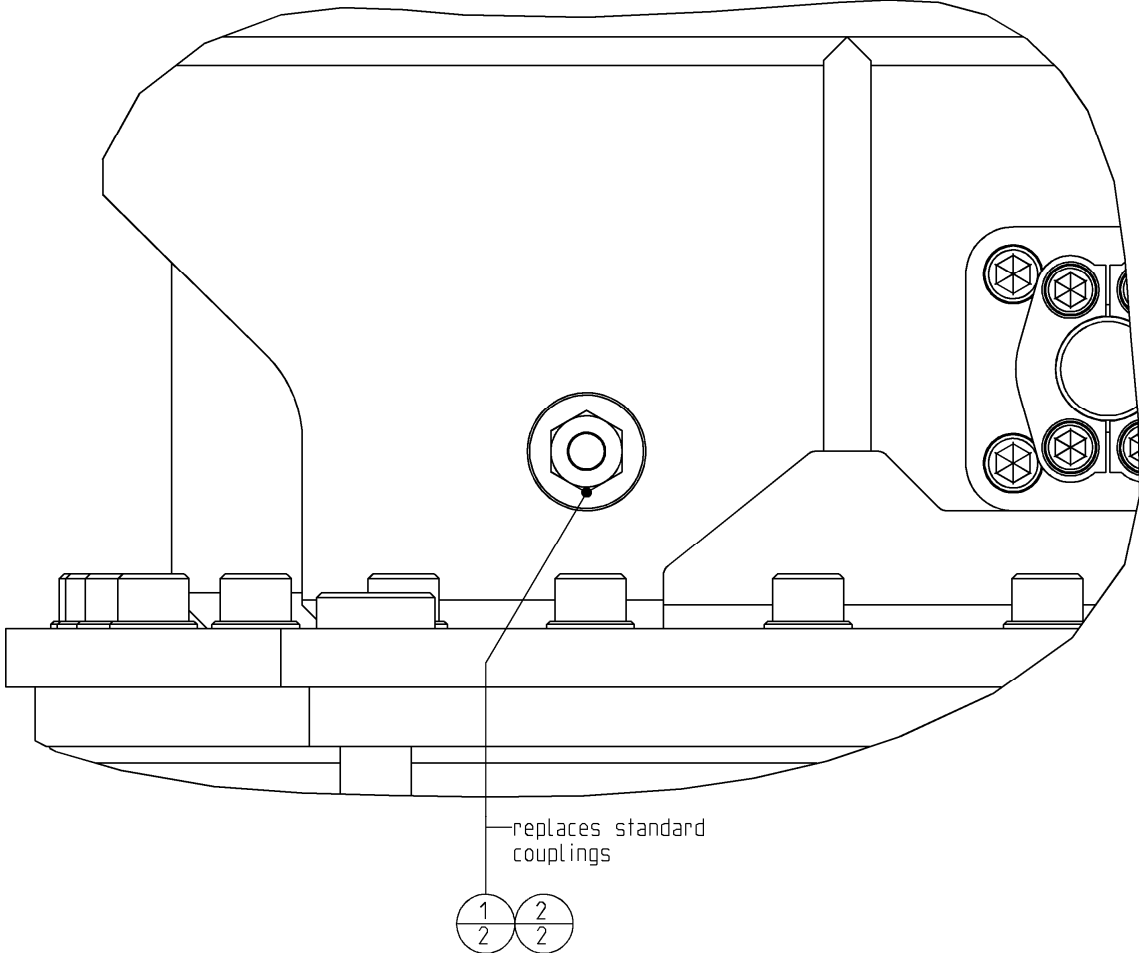
Page	34	of	38
Date	September 2021		
Product type	DCC-50-A		
Number	507230-02		

Flange kit (optional)



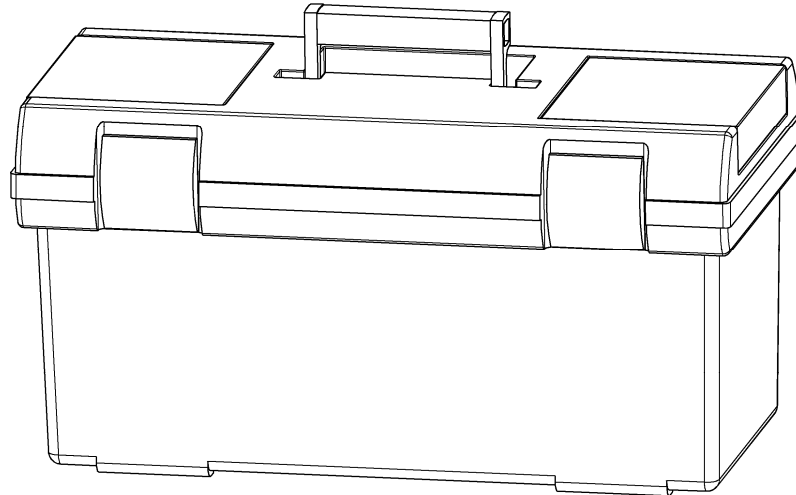
10	291065241	SAE stop	4
9	122000163	Washer normal	8
8	507201	Double flange 1 1/4" 6000 PSI	2
7	507200	SAE split flange - double	2
6	506005	Hex. socket head cap screw	8
5	504097	Seal - flange	2
4	503504	SAE split flange	4
3	500603	Seal - flange	4
2	500268	Hex. socket head cap screw	8
1	500054	Washer HV	8
POS	PARTNUMBER	PARTNAME	QT

Concrete Crusher	Page	35	of	38
	Date	September 2021		
	Product type	DCC-50-A		
Fitting kit JIC (optional)	Number	406403-00		



2	503662	Blanking cap	2
1	503650	Male stud coupling	2
POS	PARTNUMBER	PARTNAME	QT

Concrete Crusher	Page	36	of	38
	Date	September 2021		
	Product type	DCC-50-A		
Toolbox	Number	508136-02		



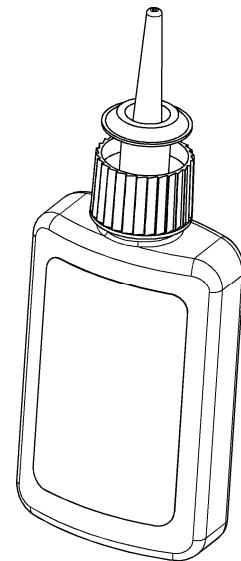
**Content of toolbox,
completed with shims, partsbook and manual of the shear**

				25	257013302	Kantseal 15,54 x 2,51	2
				24	121060762	Locknut M10 SEAL LOCK	2
				16	504009	O-ring 44,04x 3,53	3
				17	504017	O-ring 36,09x 3,53	2
				18	504048	O-ring 25,3 x 2,4	3
				19	504047	O-ring 20,3 x 2,4	3
				20	504046	O-ring 16,3 x 2,4	3
				21	504070	O-ring 12,37x 2,62	3
				22	504045	O-ring 12,0 x 2,0	3
				23	504043	O-ring 6,0 x 1,5	3
				15	504041	Seal 1-1/4" 38,8x45,8x2	2
				14	504040	Seal 1" 29,7x35,7x2	2
				13	504039	Seal 3/4" 23,9x29,2x1,5	2
				12	504036	Seal 1/4" 11,6x16,5x1,5	2
				11	504038	Seal 1/2" 18,5x23,9x1,5	2
				10	504097	Seal Flange 1-1/2"	3
				9	500603	Seal Flange 1-1/4"	3
				8	500601	Seal Flange 1"	3
				7	500600	Seal Flange 3/4"	3
				6	189069365	Sticker "Free to tank"	2
				5	508152	Sticker "Maintenance"	4
				4	508113	Sticker "Safety"	4
				3	503638	Testpoint 7/16"UNF	2
				2	500740	Testpoint G1/4"	2
				1	508137	Toolbox 580x290x300	1
				POS	PARTNUMBER	PARTNAME	QT
45	251065237	Back-up ring 50,0x 44,6x1,4	2				
44	504026	Back-up ring 44,5x42,5x2,9	2				
43	290058186	Blanking end M33x2 OR	1				
42	290058185	Blanking end M27x2 OR	1				
41	290058184	Blanking end M22x1,5 OR	1				
40	290066544	Blanking end M10x1,0 OR	1				
39	500654	Blanking end 1" -WD	1				
38	500653	Blanking end 3/4"-WD	1				
37	500652	Blanking end 1/2"-WD	1				
36	500651	Blanking end 3/8"-WD	1				
35	500650	Blanking end 1/4"-WD	1				
34	500649	Blanking end 1/8"-WD	1				
33	502562	Bleedingscrew M10 L=58,5	2				
32	120075770	Blanking screw M8x1,0	4				
31	502000	Filter line built-in	2				
30	506046	Glue Loctite 2701 5ml	1				
29	195050158	Glue TT62 pump gel	1				
28	508139	Grease cartridge	1				
27	508138	Grease pistol	1				
26	500560	Grease-nipple, straight M10x1	10				

Concrete Crusher	Page	37	of	38
	Date	September 2021		
	Product type	DCC-50-A		
Additional parts	Number	n.a.		

Chemical lock

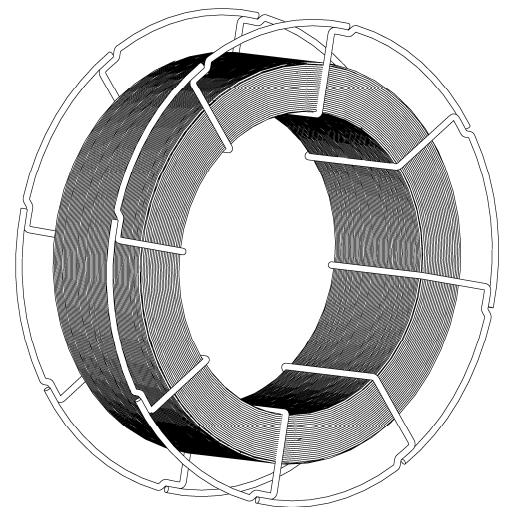
195050158	Cyberbond TT62 Pumpgel	1
506018	Loctite 480 Flacon 20 gr	1
506017	Loctite 638 Flacon 50 ml	1
506016	Loctite 270 Flacon 50 ml	1
PARTNUMBER	PARTNAME	QT



MAG welding wire

- for hard facing cutting blades
- 48-52 HRc
- Standards;
 - AWS A 5.21: no standard
 - EN ISO 14700: ~S Fe14
 - DIN: W.Nr. 1.8425
 - DIN 8555: MSG 2-GZ-500

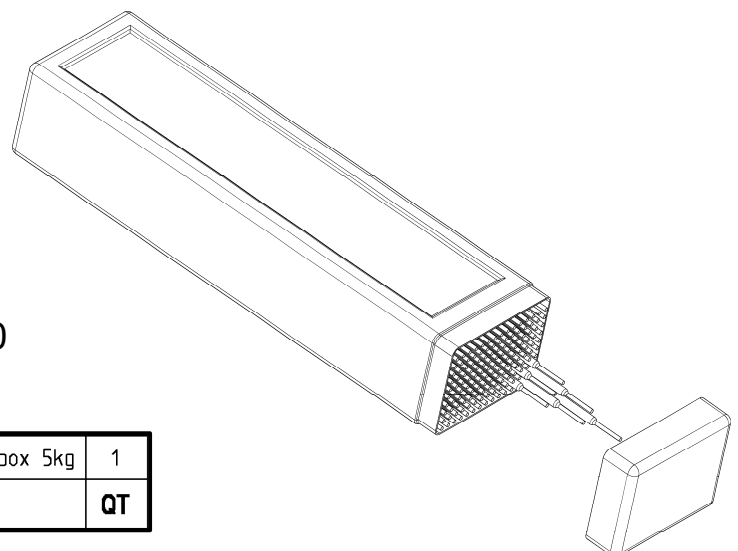
501237	Welding wire MAG; 1.8425, coil 15kg	1
PARTNUMBER	PARTNAME	QT



Welding electrodes

- for hard facing cutting blades
- 48-52 HRc
- Standards;
 - AWS A 5.21: no standard
 - EN ISO 14700: ~S Fe14
 - DIN: W.Nr. 1.8425
 - DIN 8555: MSG 2-GZ-500

501238	Weld. electr.:1.8425, Ø 2,5mm, box 5kg	1
PARTNUMBER	PARTNAME	QT



Concrete Crusher	Page	38	of	38
	Date	September 2021		
	Product type	DCC-50-A		
Instructions	Number	n.a.		

Mounting instructions for Cyberbound TT 62

This instruction shall guarantee that all hydraulic fittings and cartridges will be mounted and glued in correctly.

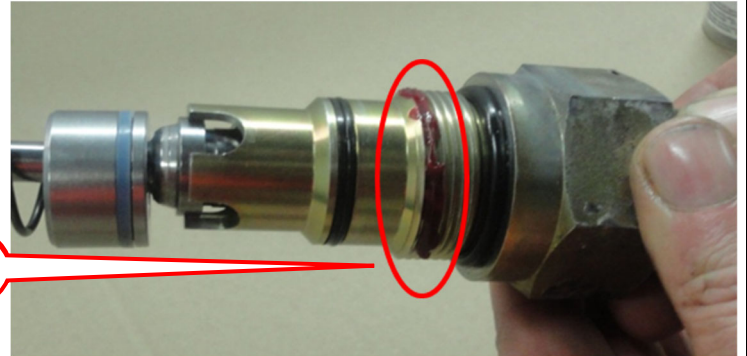
Procedure:

Clean and degrease thoroughly all components with a special cleaner for anaerobic adhesives (e.g. Loctite cleaner 7063) or acetone.

Apply on the outside thread only a bead of Cyberbond TT62 pump gel to approx. 2/3 of the girth of the second thread for fittings up to a diameter of 20mm or to the entire girth for fittings with a diameter larger than 20mm.



Cyberbound
TT 62



Clean from adhesive residues pressed out from the bore hole after fitting.

ATTENTION. The sealings shall be free of adhesive residues!

Tighten fittings with given fastening torques.

Standard torque values for bolts

(when not indicated)

Thread size	Torque (Nm) for quality		
	8.8	10.9	12.9
M8	22,5	32,4	38,7
M10	45,0	63,0	75,6
M12	77,4	109,0	131,0
M16	194,0	270,0	324,0
M20	369,0	522,0	630,0
M24	639,0	900,0	1080,0
M27	945,0	1305,0	1575,0
M30	1260,0	1800,0	2160,0



DEMAREC AND KINSHOFER WORLDWIDE

Netherlands:

Demarec

Demolition and Recycling Equipment BV

De Hork 32

5431 NS Cuijk

Netherlands

TEL. +31 (0) 485 442300

FAX +31 (0) 485 442120

Email:

info@demarec.com

United Kingdom:

Kinshofer UK Ltd.

4 Milton Industrial Court,

Horsfield Way, Bredbury

Stockport, Cheshire, SK6 2TA

United Kingdom

TEL. +44 (0) 161 - 406 7046

FAX +44 (0) 161 - 406 7014

Email:

sales@kinshofer.co.uk

France:

Kinshofer France S.A.R.L.

B.P. 20100

67213 Obernai Cedex

France

TEL. +33 (0) 388 39 55 00

FAX +33 (0) 388 79 06 75

Email:

info@kinshofer.fr

Czech Republic:

Kinshofer CZ s.r.o.

Cs. Legii 568

37810 Ceske Velenice

Czech Republic

TEL. +420 384 - 795 110

FAX +420 384 - 795 120

Headquarters:

Germany:

Kinshofer GmbH

Hauptstrasse 76

83666 Waakirchen

Germany

TEL. +49 (0) 8021 - 88 99 0

FAX +49 (0) 8021 - 88 99 37

Email:

info@kinshofer.com

North America:

Kinshofer North America

5040 Mainway Drive, Unit 11

Burlington, ON L7L 7G5

Canada

TEL. +1 (905) 335 2856

FAX +1 (905) 335 4529

Toll Free in Canada and USA:

TEL. 1-800-268-9525

Email:

sales-northamerica@kinshofer.com

Finland:

Kinshofer Aponox Oy

Terminaalitie 10

13430 Hämeenlinna

Finland

TEL. +358 (0)75 7540 200

FAX +358 (0)75 7540 210

Beijing:

Darda Kinshofer

Construction Machinery Co. Ltd.

Unit #306, Landmark Tower 2

8 Dongsanhuan Road

Beijing 100004

China

TEL. +86 (10) 6590 6422

FAX +86 (10) 6590 6423

Email:

info@darda.com.cn