



Partsbook
for
Concrete Crusher
DCC-30-D

Product	Part Number	Ref.
DCC-30-D Serie 2	DCC030B120DAB6	



Partsbook_dcc030b120dab6-b_2021-03-23.docx

March 2021

Demarec Demolition and Recycling Equipment BV

De Hork 32, 5431 NS Cuijk, Netherlands

TEL.
FAX

+31 (0) 485 442300
+31 (0) 485 442120

INTERNET
E-MAIL

www.demarec.com
info@demarec.com

Concrete Crusher

Page

1

of

35

Date

March 2021

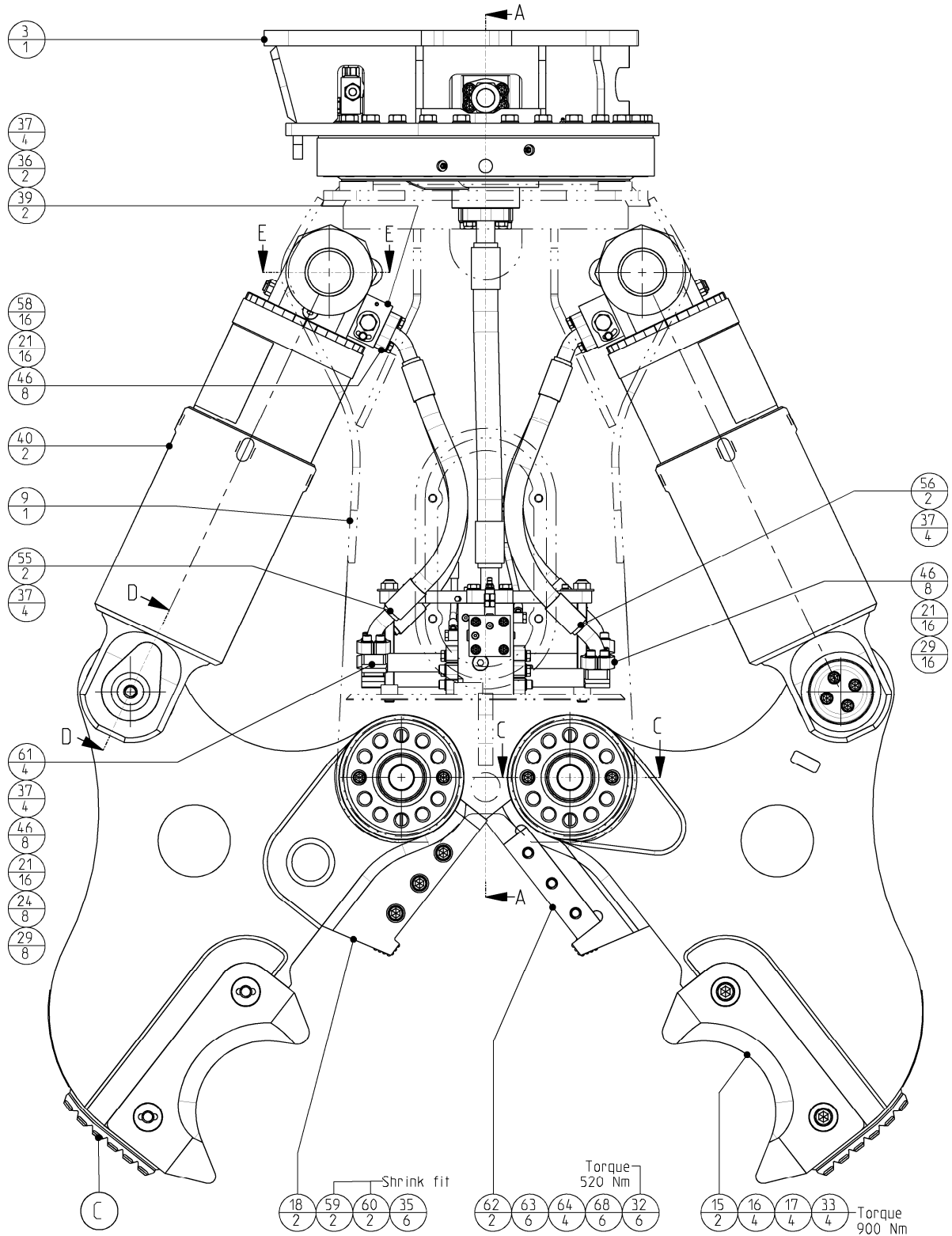
Product type

DCC-30-D

Housing GP

Number

DCC030B120DAB6-B



Parts marked with a letter in column "Set" can be ordered as a set with Itemnumber

Remark:

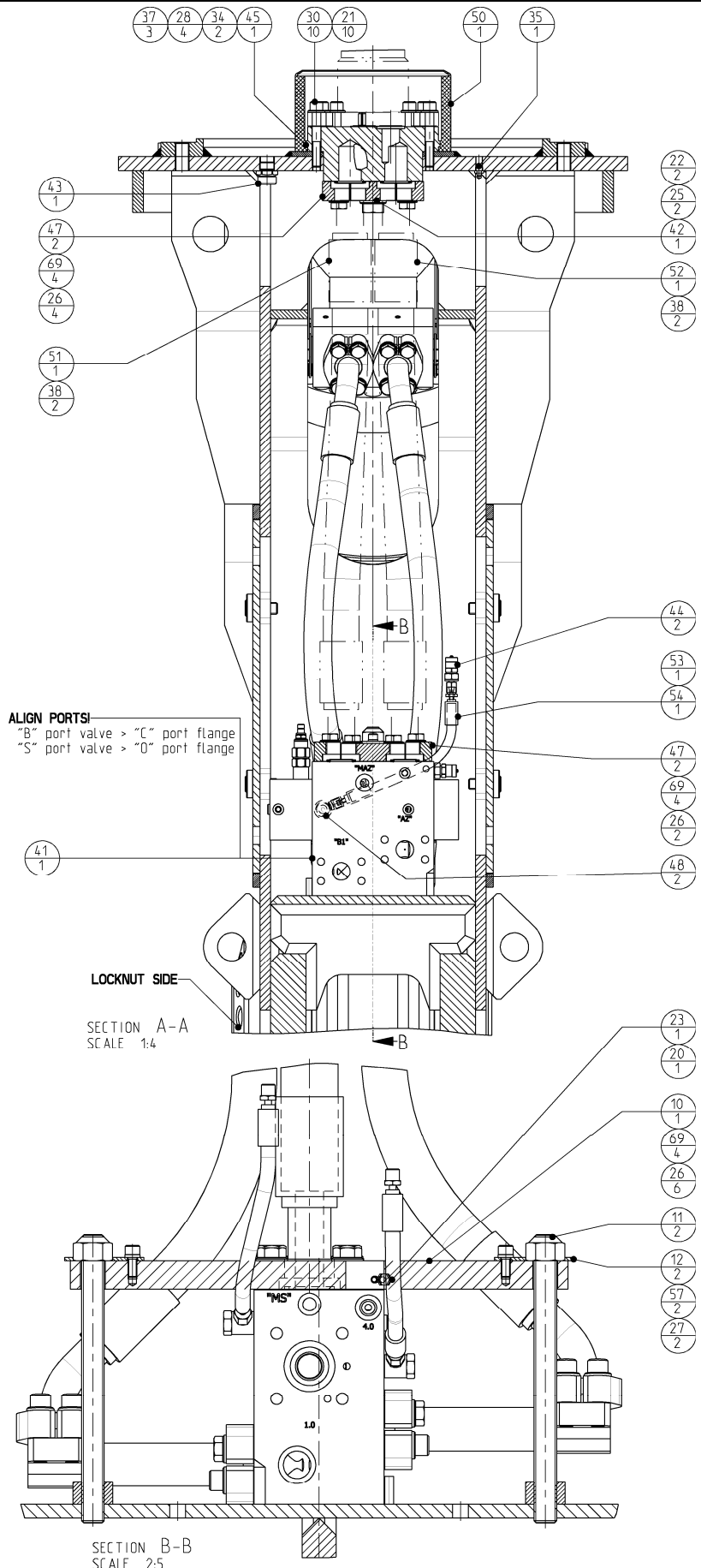
For the order of (dis)assembling and adjusting jaw and blades see user manual.

Set	Description	Itemnumber
a	Shearblade set	408251
b	Shroud set	408989
c	Chocky bar (1 piece)	408939
-	Service kit	408657
-	Connection kit open/close 38S	408496
-	N.A. fitting kit (JIC)	406403

Concrete Crusher

Page	2	of	35
Date	March 2021		
Product type	DCC-30-D		
Number	DCC030B120DAB6-B		

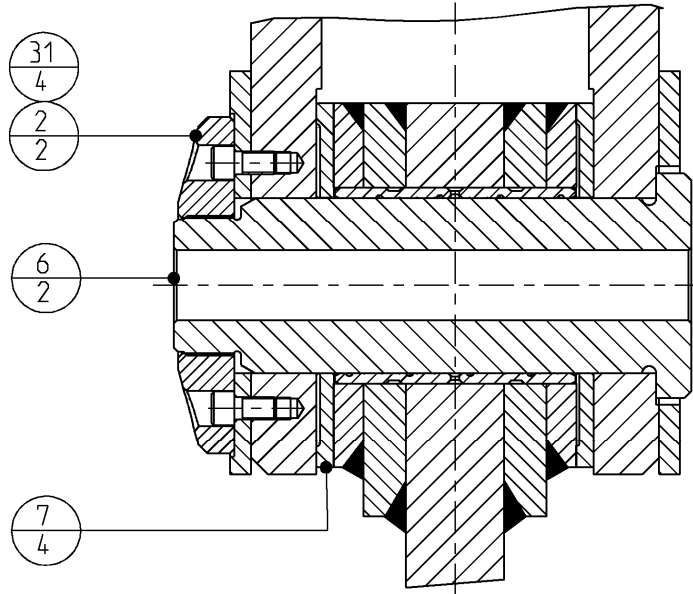
Housing GP



Concrete Crusher

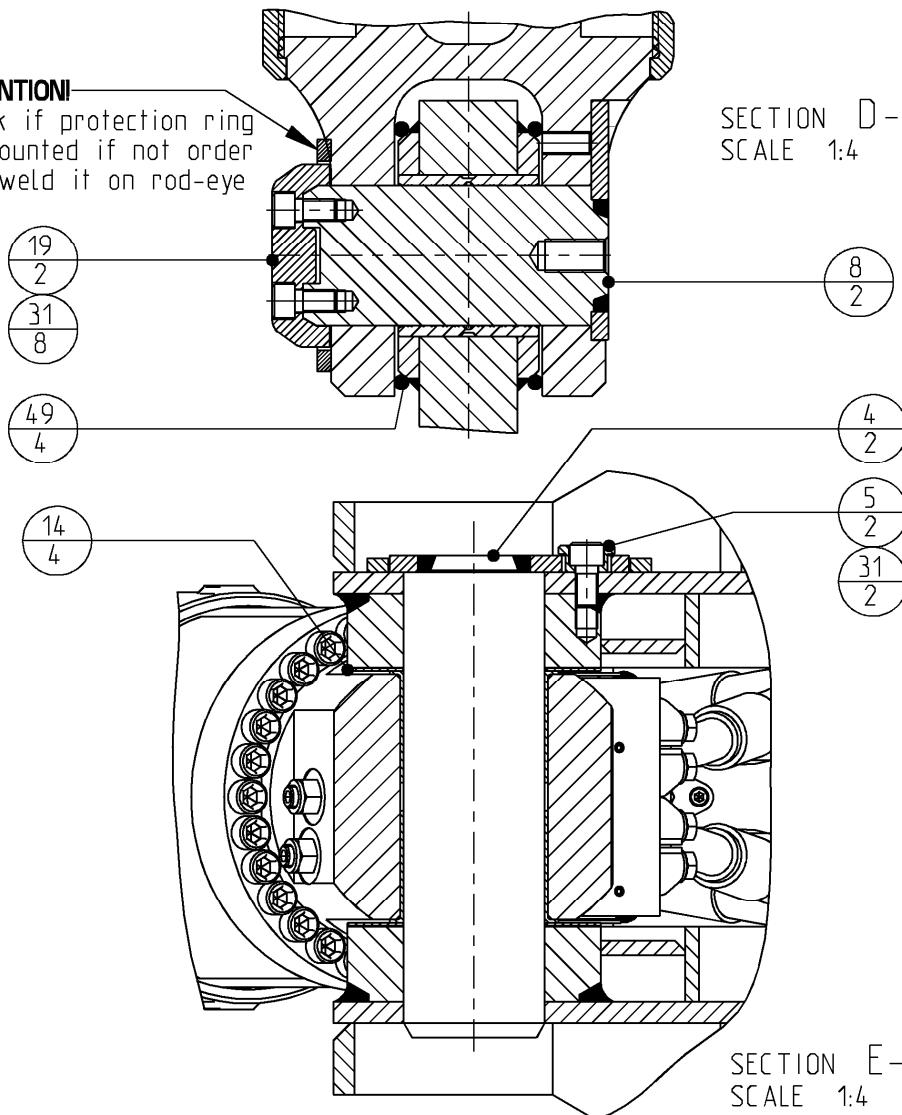
Page	3	of	35
Date	March 2021		
Product type	DCC-30-D		
Number	DCC030B120DAB6-B		

Housing GP



SECTION C-C
SCALE 1:4

ATTENTION!
check if protection ring
is mounted if not order
and weld it on rod-eye



SECTION D-D
SCALE 1:4

SECTION E-E
SCALE 1:4

Concrete Crusher

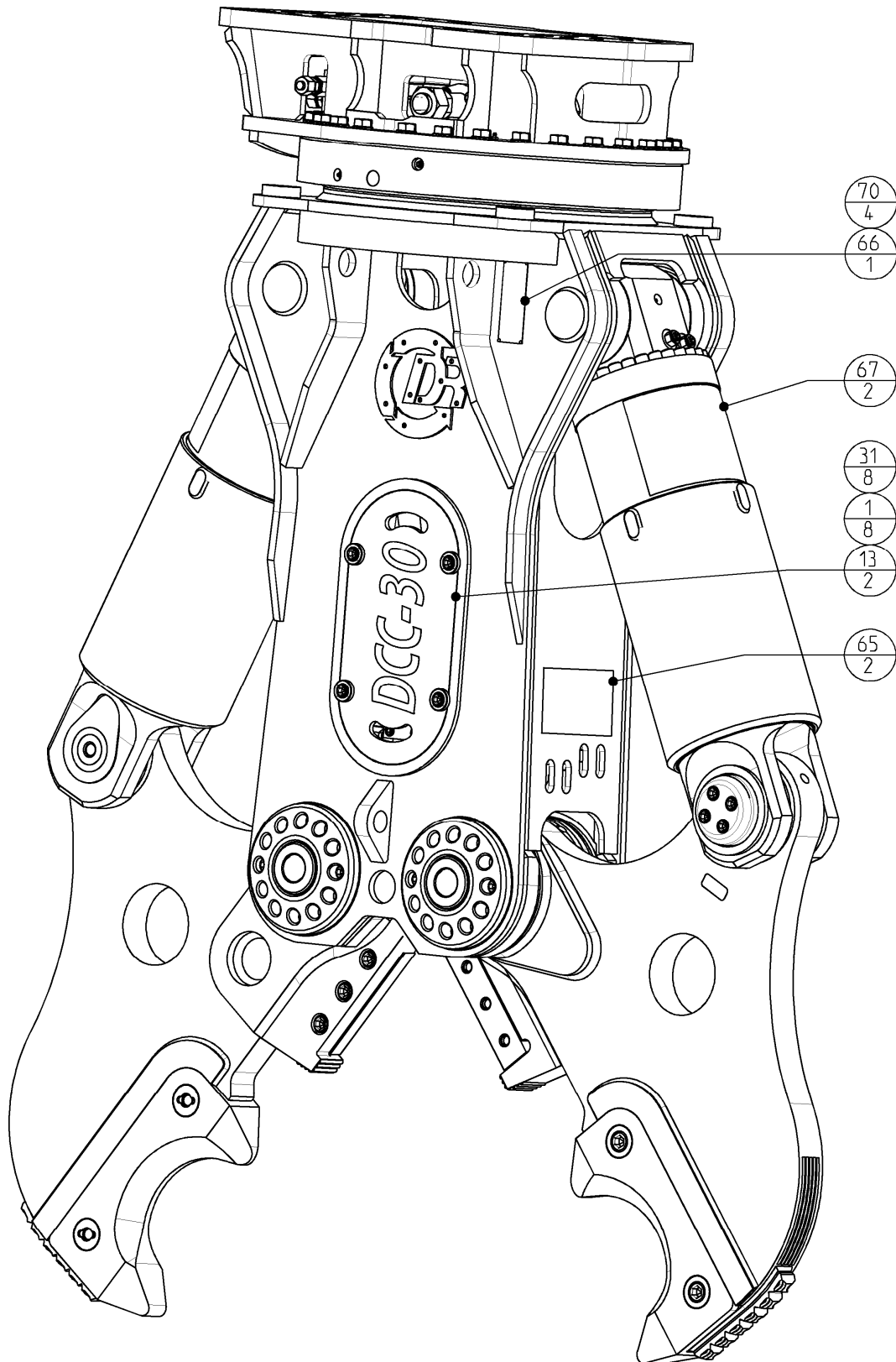
Page **4** of **35**

Date **March 2021**

Product type **DCC-30-D**

Housing GP

Number **DCC030B120DAB6-B**



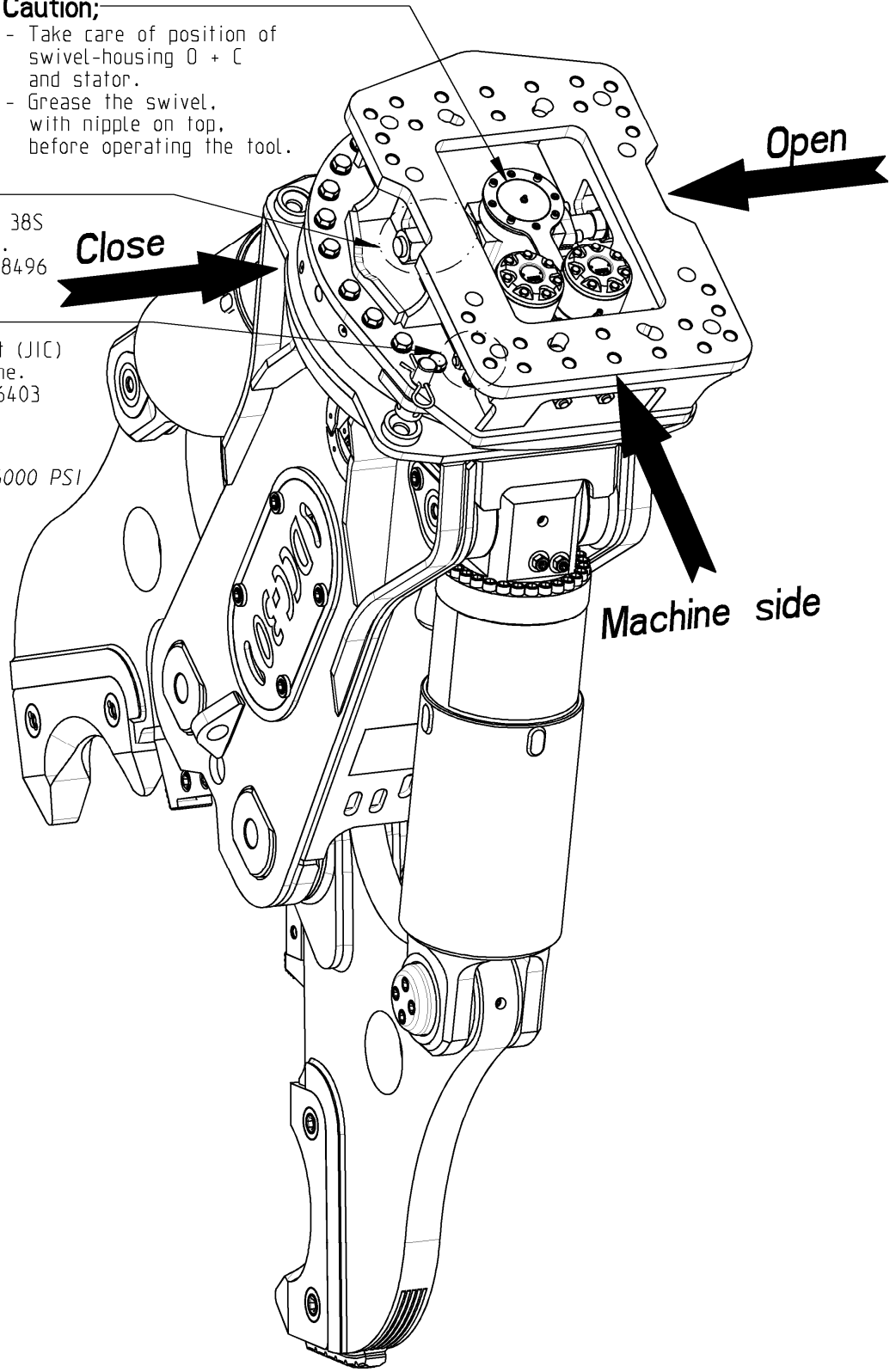
Concrete Crusher	Page	5	of	35
	Date	March 2021		
	Product type	DCC-30-D		
Housing GP	Number	DCC030B120DAB6-B		

Caution;
 - Take care of position of swivel-housing O + C and stator.
 - Grease the swivel, with nipple on top, before operating the tool.

Optional;
 Connection kit 38S for open/close.
 Fitting kit: 408496

Optional;
 N.A. fitting kit (JIC) for rotation line.
 Fitting kit: 406403

Open/Close
 - SAE 1-1/4" 6000 PSI
 - Both sides



Concrete Crusher	<i>Page</i>	6	<i>of</i>	35
	<i>Date</i>	March 2021		
	<i>Product type</i>	DCC-30-D		
Housing GP	<i>Number</i>	DCC030B120DAB6-B		

	70	130059276	Screw - drive	4		35	500560	Grease - nipple	7
	69	122000163	Washer normal	12		34	500540	Springtype straight pin	2
a	68	508218	Shim - straight	6	b	33	500282	Hex. socket head cap screw	4
	67	508162_R135	Sticker	2	a	32	500271	Hex. socket head cap screw	6
	66	508115	Type plate	1		31	500258	Hex. socket head cap screw	22
	65	508113	Sticker	2		30	500254	Hex. socket head cap screw	10
a	64	508003	Shim - straight	4		29	500250	Hex. socket head cap screw	24
a	63	508002	Shim - straight	6		28	500224	Hex. socket head cap screw	4
a	62	508001	Shearblade - straight	2		27	500222	Hex. socket head cap screw	2
	61	507481	Flange pipe 1" 6000 PSI	4		26	500205	Bolts Hexagon	12
	60	507053	Bushing	2		25	500160	Bolts Hexagon	2
	59	507014	Bushing	2		24	500134	Bolts Hexagon	8
	58	506084	Bolts Hexagon	16		23	500097	Bolts Hexagon	1
	57	506073	Lockwasher - Nordlock	2		22	500055	Washer HV	2
	56	505283_RM_DCC30	Hydr.Hose asm. 1" SAE 100R15	2		21	500053	Washer HV	58
	55	505282_RM_DCC30	Hydr. hose asm. 1" SAE 100R15	2		20	500001	Nut Hexagon	1
	54	505236_DCC30-2	Hydr. hose asm. 1/4" SAE 100R2AT	1		19	409657	Endcap - pin Ø100 spec.	2
	53	505236_DCC30-1	Hydr. hose asm. 1/4" SAE 100R2AT	1		18	409246	Jaw machined	2
	52	505224_RM_DCC30-2	Hydr.hose asm. 1 1/4" SAE100R15	1	b	17	408979	Lock - nut	4
	51	505224_RM_DCC30-1	Hydr.hose asm. 1 1/4" SAE100R15	1	b	16	408978	Lock - bushing	4
	50	504216	Tube + V-ring	1	b	15	408976	Shroud DCC-25/30	2
	49	504190	O-ring	4		14	408701	Shim	4
	48	503612	Banjo Coupling	2		13	408670	Cover Small DCC	2
	47	503504	SAE split flange	4		12	408483	Lockplate	2
	46	503503	SAE split flange	24		11	408481	Bolt asm.	2
	45	501997	Base flange - DCC/DXS	1		10	408480	Lockplate - valve	1
	44	501936	Test-point	2		9	407934	Housing machined	1
	43	501935	Plug - breather	1		8	407817	Pin asm.	2
	42	501927	SAE split flange - double	1		7	407797	Spacer	4
	41	501890	Speed valve GP	1		6	407791	Pin	2
	40	501825	Hydraulic Cylinder GP	2		5	407787	Lock bushing	2
	39	501795	Valve GP	2		4	407771	Pin asm.	2
	38	500603	Seal - flange	4		3	407650	Rotatorhead GP	1
	37	500601	Seal - flange	19		2	405573	Locknut	2
	36	500600	Seal - flange	2		1	405104	Lock bushing	8
					Set	POS	PARTNUMBER	PARTNAME	QT

Concrete Crusher

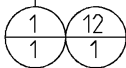
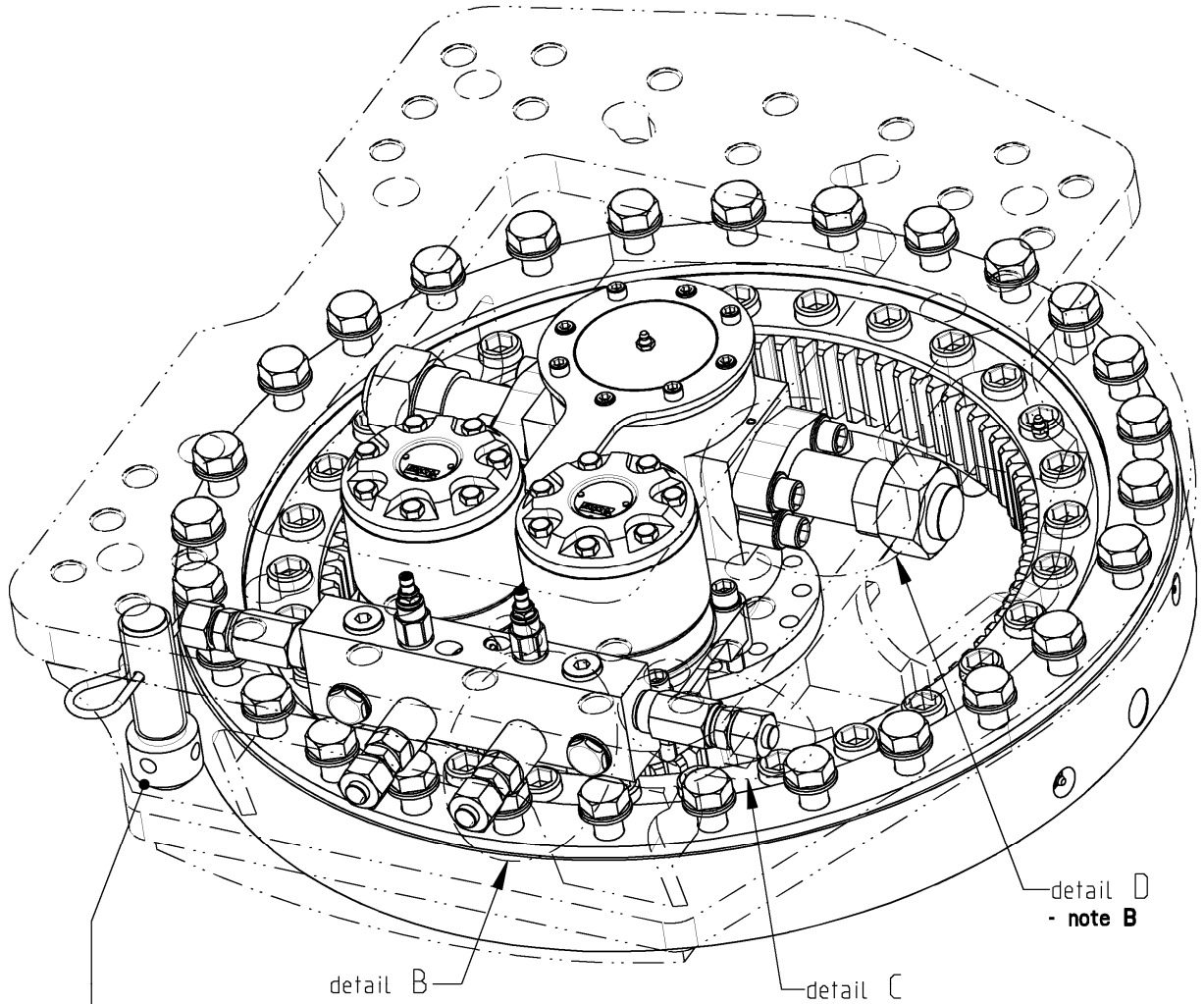
Page **7** of **35**

Date **March 2021**

Product type **DCC-30-D**

Rotatorhead GP

Number **407650-03**



Note A
Mount with Cyberbound TT62
according instruction at the
end of this partsbook.

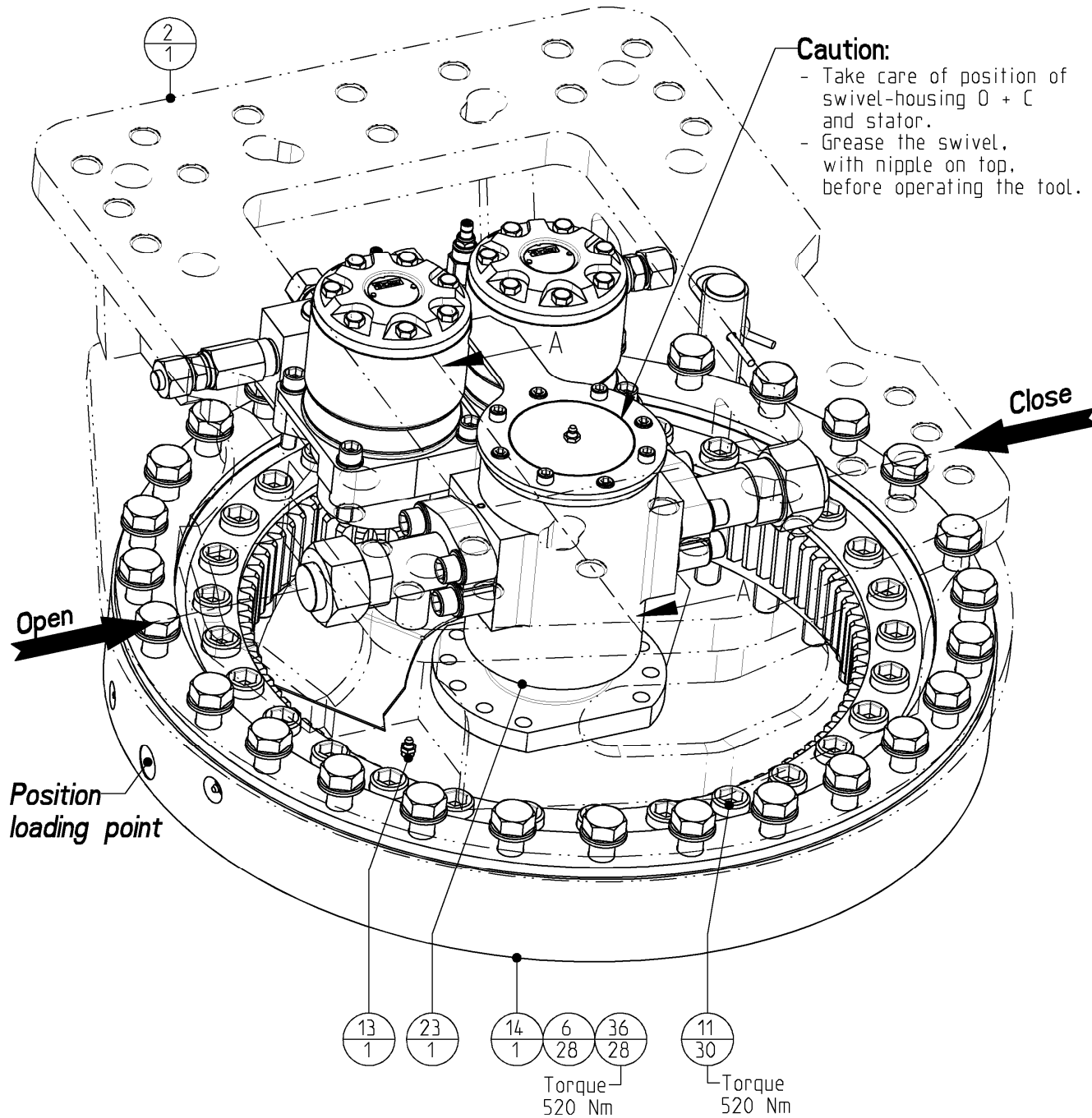
Note B
Optional 38S kit, for open/close.
Fitting kit: 408496

Note C
Optional N.A. fitting kit (JIC)
Fitting kit: 406403

Concrete Crusher

Page	8	of	35
Date	March 2021		
Product type	DCC-30-D		
Number	407650-03		

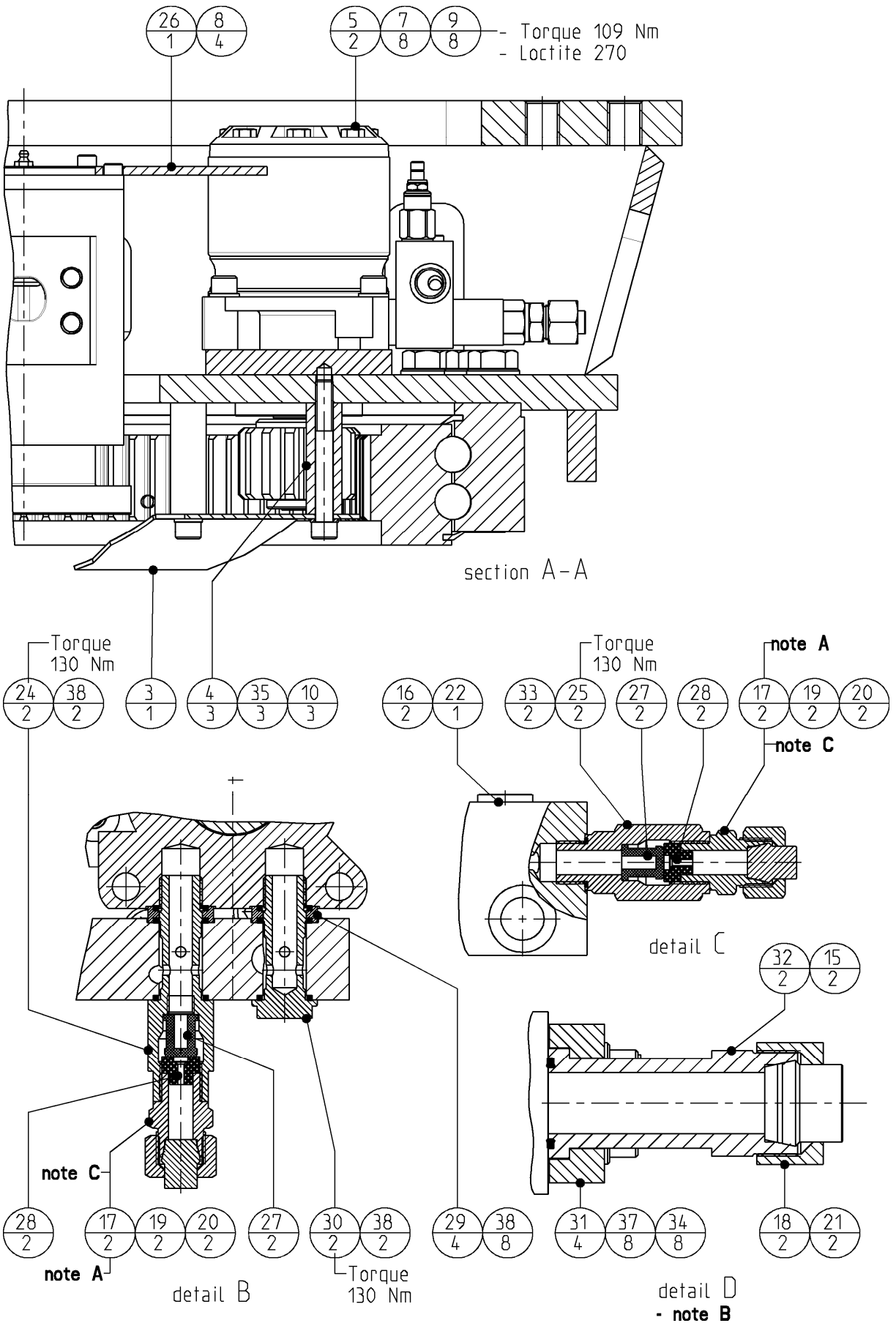
Rotatorhead GP



Concrete Crusher

Page	9	of	35
Date	March 2021		
Product type	DCC-30-D		
Number	407650-03		

Rotatorhead GP



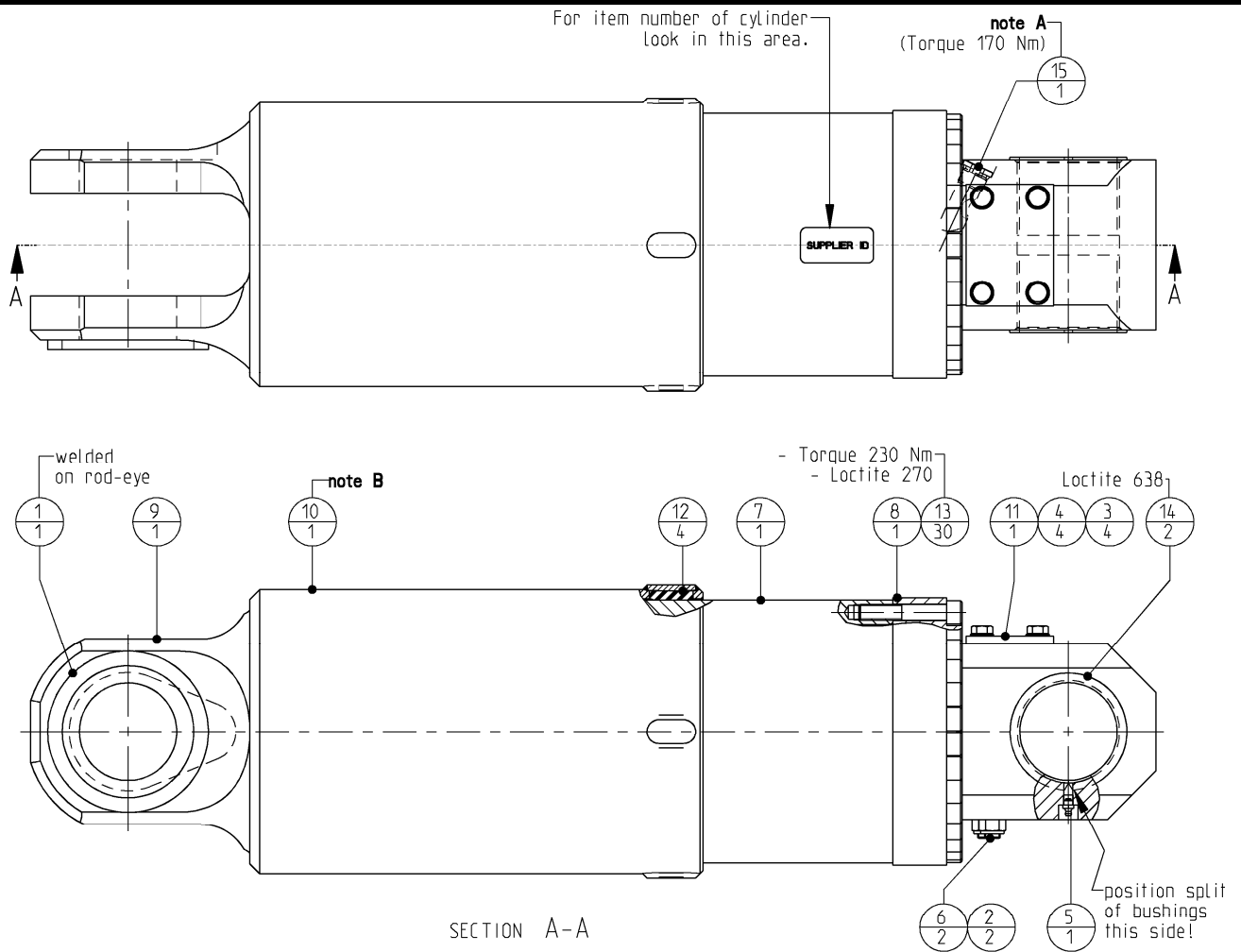
Concrete Crusher	Page	10	of	35
	Date	March 2021		
	Product type	DCC-30-D		
Rotatorhead GP	Number	407650-03		

POS	PARTNUMBER	PARTNAME	QT
20	500945	Blanking plug	4
19	500940	Nut coupling	4
18	500930	Nut coupling	2
17	500693	Male stud coupling	4
16	500652	Blanking end	2
15	500603	Seal - flange	2
14	500591	Slewing Ring; Internal Gear	1
13	500560	Grease - nipple	1
12	500504-2	Locking pin (hair-pin)	1
11	500302	Hex. socket head cap screw	30
10	500256	Hex. socket head cap screw	3
9	500252	Hex. socket head cap screw	8
8	500224	Hex. socket head cap screw	4
7	500068	Washer spring	8
6	500055	Washer HV	28
5	407855	Motor GP	2
4	407666	Spacer sleeve	3
3	407665	Blade - greasing	1
2	407651	Rotatorhead asm. machined	1
1	400066	Lock - pin	1
38	257066194	Kantseal	12
37	122000163	Washer normal	8
36	120064293	Bolts Hexagon	28
35	506055	Lockwasher - Nordlock	3
34	506005	Hex. socket head cap screw	8
33	504038	Seal G1/2'	2
32	503912	SAE flange adapter XLong	2
31	503504	SAE split flange	4
30	502907	Banjo bolt	2
29	502903	Spacer	4
28	502001	Drossel - ring	4
27	502000	Filter	4
26	501938	Lock key - swivel	1
25	501923	Sleeve G1/2"-G1/2" + Filter	2
24	501922	Banjo bolt - filter	2
23	501900	Swivel GP	1
22	501733	Valve GP	1
21	500949	Blanking plug	2

Concrete Crusher

Page	11	of	35
Date	March 2021		
Product type	DCC-30-D		
Number	501825-09		

Cylinder GP



SECTION A-A

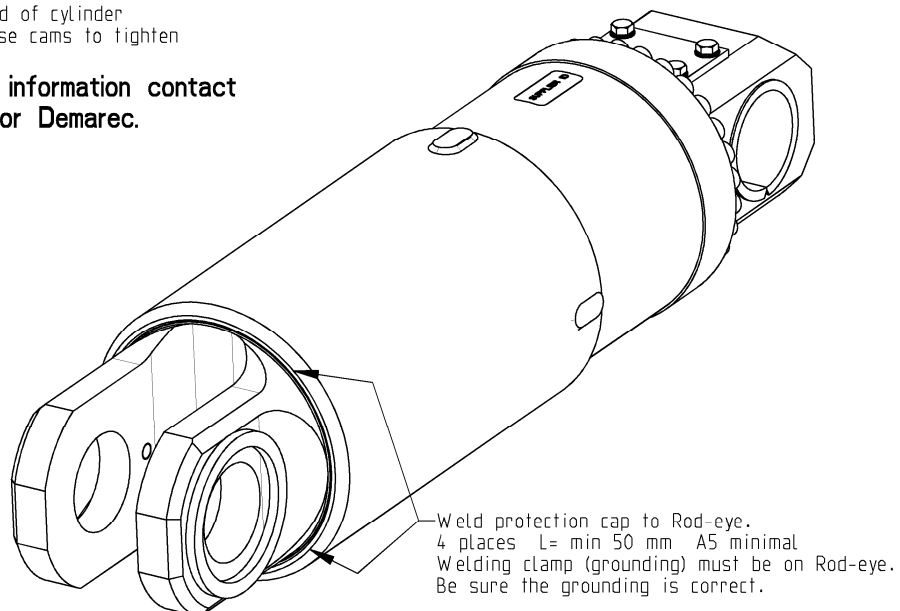
note A:
Mount with cyberbound TT62 according instructions at the end of this partsbook.

note B:
mounting order protection cap:
- lubricate thread with Loctite LB 8150
- turn cap on the head of cylinder fully to the end, use cams to tighten

Note
When seals inside the cylinder must be exchanged it is important to exchange also the bolts from bottom and head! Seals, bolts and Loctite can be ordered as one set, see below.

Service set	Itemnumber
Service seal set	504230
Service set (seals , bolts & Loctite)	504231

For more detailed information contact your local dealer or Demarec.



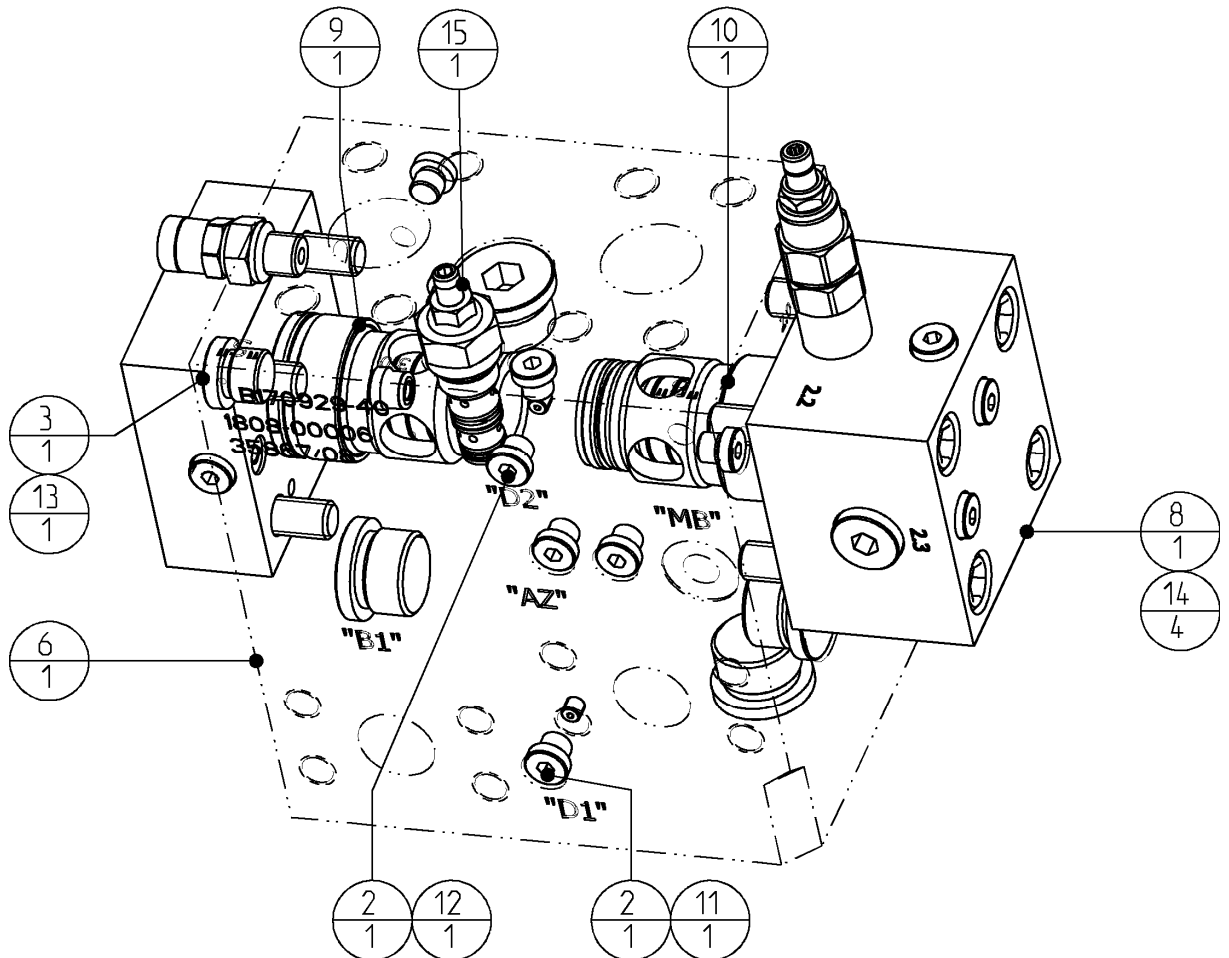
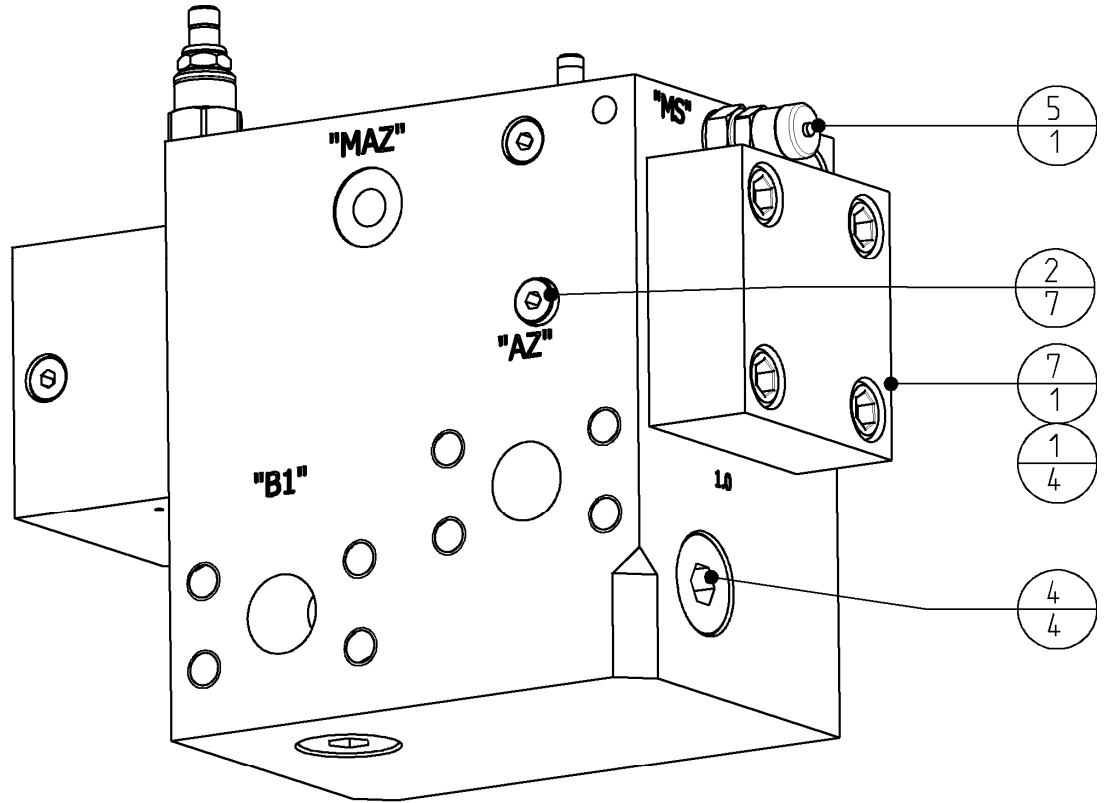
Concrete Crusher	<i>Page</i>	12	<i>of</i>	35
	<i>Date</i>	March 2021		
	<i>Product type</i>	DCC-30-D		
Cylinder GP	<i>Number</i>	501825-09		

15	290058185	Blanking end ISO 6149	1
14	507050	Bushing - collar	2
13	506079	Hex. socket head cap screw	60
12	504224	Slide pad	4
11	501844	Blanking cover	1
10	501837	Protecion Cap asm.	1
9	501828	Rod GP	1
8	501827	Cylinder - bottom	1
7	501826	Tube - housing	1
6	501408	Bleeding screw GP	2
5	500560	Grease - nipple	1
4	500131	Bolts Hexagon	4
3	500043	Washer normal	4
2	500031	Nut Hexagon self-locking	2
1	409665	Ring - protection	1
POS	PARTNUMBER	PARTNAME	QT

Concrete Crusher

Page	13	of	35
Date	March 2021		
Product type	DCC-30-D		
Number	501890-02		

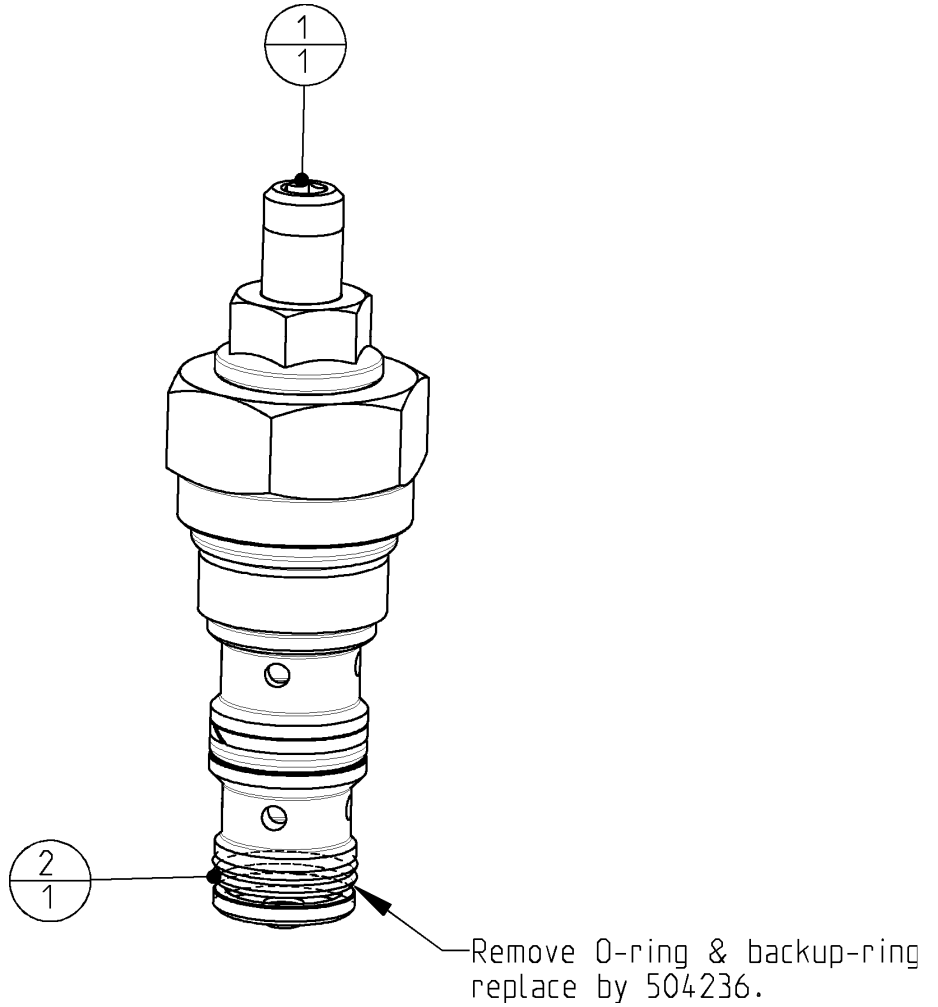
Valve GP



Concrete Crusher	<i>Page</i>	14	<i>of</i>	35
	<i>Date</i>	March 2021		
	<i>Product type</i>	DCC-30-D		
Valve GP	<i>Number</i>	501890-02		

15	507391	Priority cartridge valve	1
14	506090	Hex. socket head cap screw	4
13	501934	Valve - non return	1
12	501929	Restrictor - plug	1
11	501928	Restrictor - plug	1
10	501897	Cartridge slip-in NG25	1
9	501896	Cartridge slip-in NG25	1
8	501894	Cover GP	1
7	501892	Cover GP	1
6	501891	Valve - housing	1
5	500740	Test-point	1
4	500653	Blanking end	4
3	500651	Blanking end	1
2	500649	Blanking end	9
1	500249	Hex. socket head cap screw	4
POS	PARTNUMBER	PARTNAME	QT

Concrete Crusher	Page	15	of	35
	Date	March 2021		
	Product type	DCC-30-D		
Cartridge – priority valve	Number	507391-00		



2	504236	Static seal	1
1	501538_REBUILD	Priority cartridge valve	1
POS	PARTNUMBER	PARTNAME	QT

Concrete Crusher

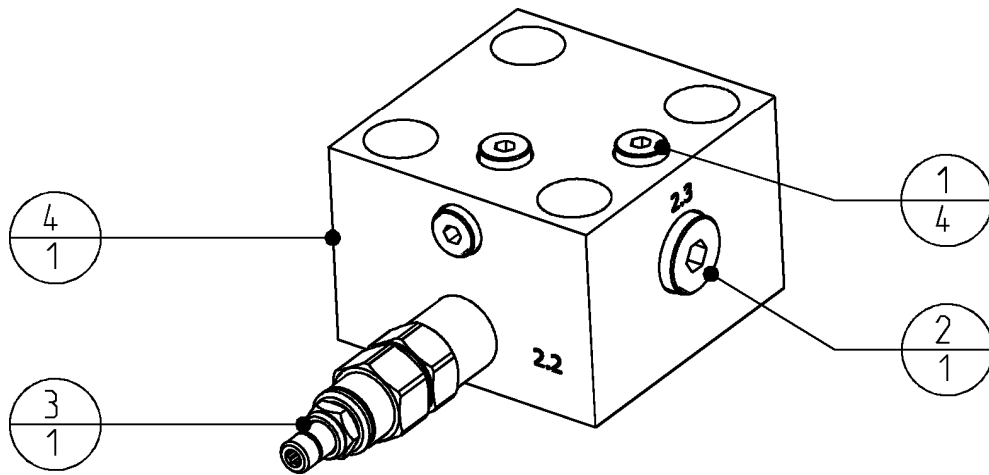
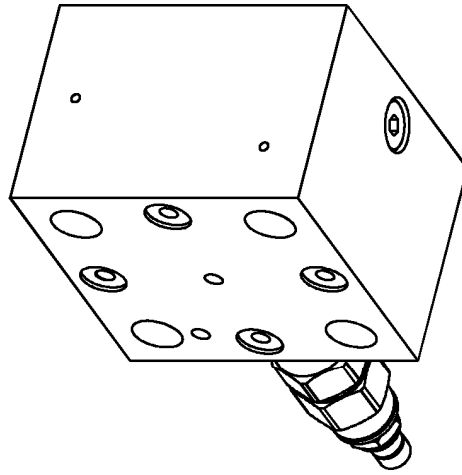
Page **16** of **35**

Date **March 2021**

Product type **DCC-30-D**

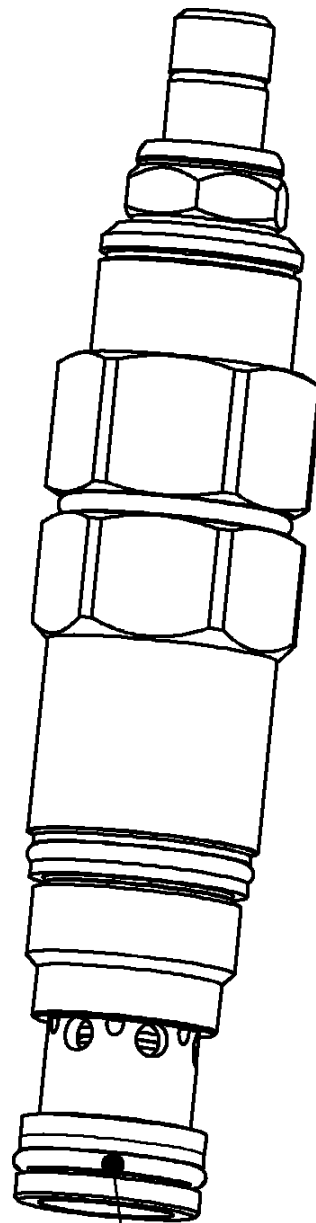
Cover GP

Number **501894-00**



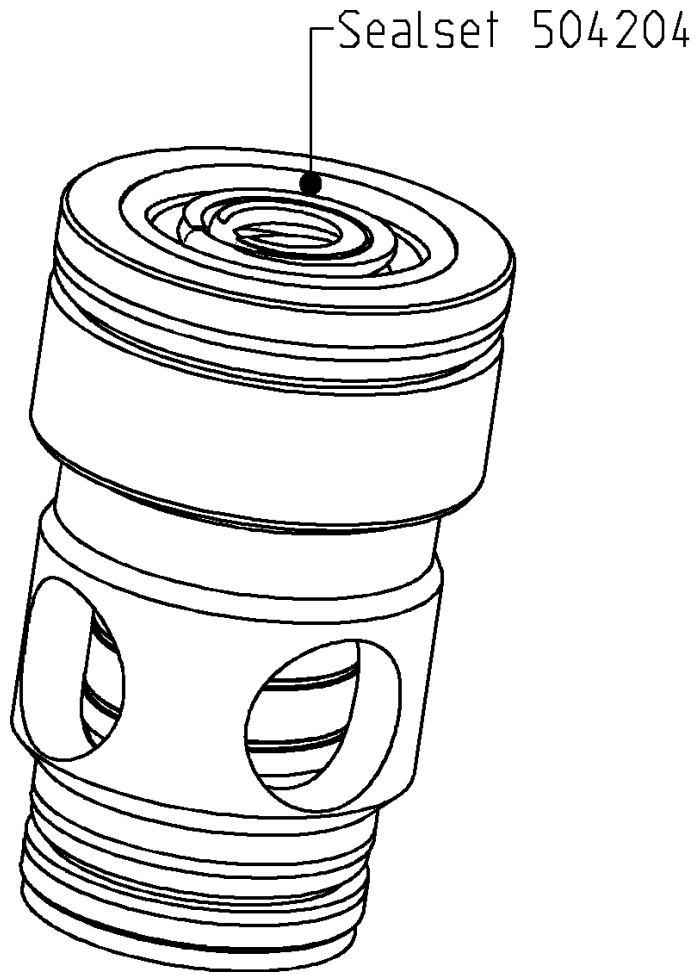
4	501895	Cover	1
3	501537	Cartridge - sequence valve	1
2	500651	Blanking end	1
1	500649	Blanking end	4
POS	PARTNUMBER	PARTNAME	QT

Concrete Crusher	<i>Page</i>	17	<i>of</i>	35
	<i>Date</i>	March 2021		
	<i>Product type</i>	DCC-30-D		
Cartridge - sequence valve	<i>Number</i>	501537-00		

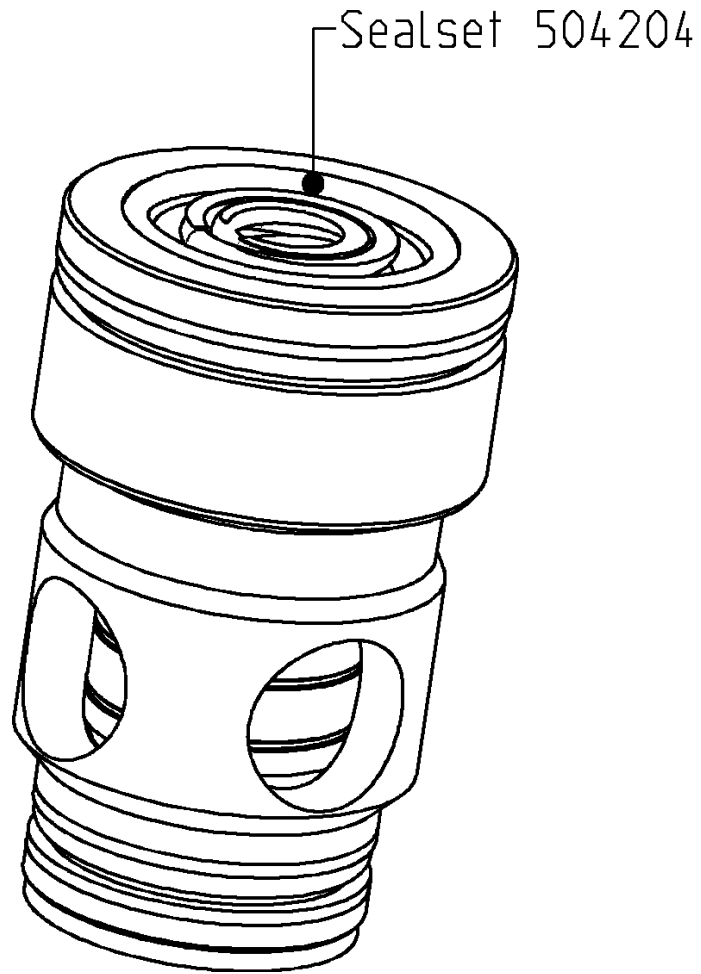


Sealset 504203

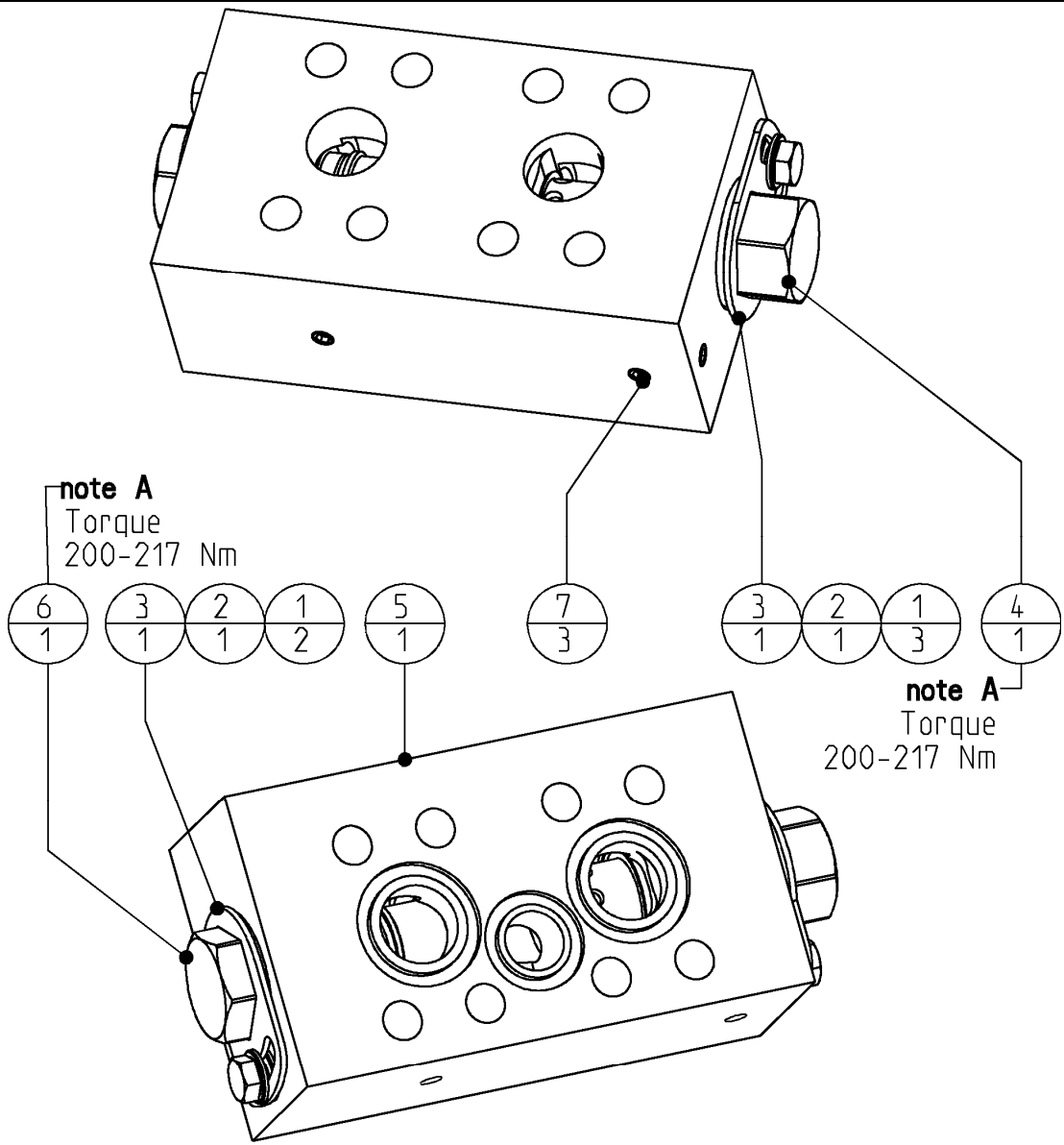
Concrete Crusher	<i>Page</i>	18	<i>of</i>	35
	<i>Date</i>	March 2021		
	<i>Product type</i>	DCC-30-D		
Cartridge - slip-in valve	<i>Number</i>	501896-00		



Concrete Crusher	<i>Page</i>	19	<i>of</i>	35
	<i>Date</i>	March 2021		
	<i>Product type</i>	DCC-30-D		
Cartridge - slip-in valve	<i>Number</i>	501897-00		



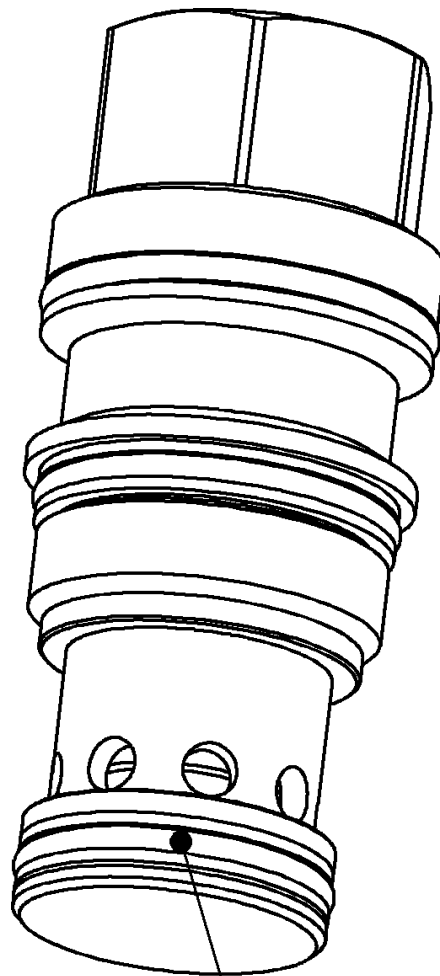
Concrete Crusher	Page	20	of	35
	Date	March 2021		
	Product type	DCC-30-D		
DemaPower valve GP	Number	501795-01		



note A:
Mount with cyberbound TT62 according instruction at the end of the partsbook.

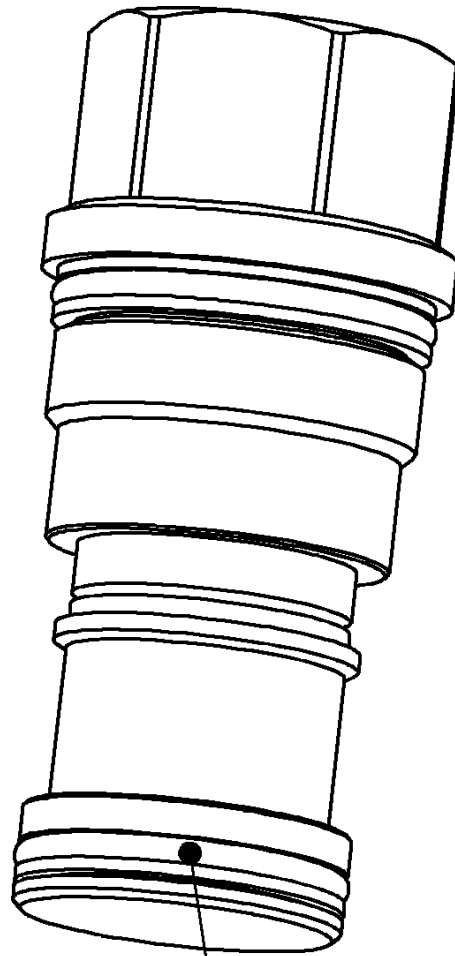
7	502132	Hex.socket plug-tappered	3
6	502117	Cartridge - check valve	1
5	501796	Valve - housing	1
4	501378	Cartridge - check valve	1
3	501347	Lockplate Key 32	2
2	500103	Bolts Hexagon	2
1	500041	Washer normal	5
POS	PARTNUMBER	PARTNAME	QT

Concrete Crusher	<i>Page</i>	21	<i>of</i>	35
	<i>Date</i>	March 2021		
	<i>Product type</i>	DCC-30-D		
Cartridge – check valve	<i>Number</i>	501378-00		



Sealset 504024

Concrete Crusher	<i>Page</i>	22	<i>of</i>	35
	<i>Date</i>	March 2021		
	<i>Product type</i>	DCC-30-D		
Cartridge – check valve	<i>Number</i>	502117-02		



Sealset 504024

Concrete Crusher

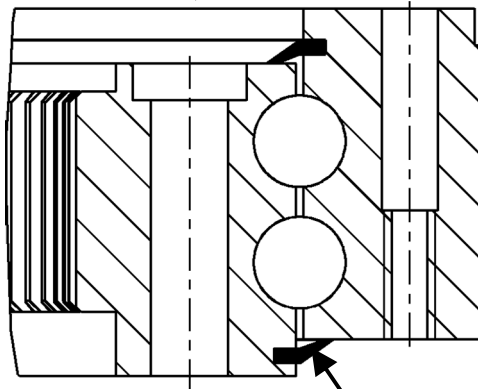
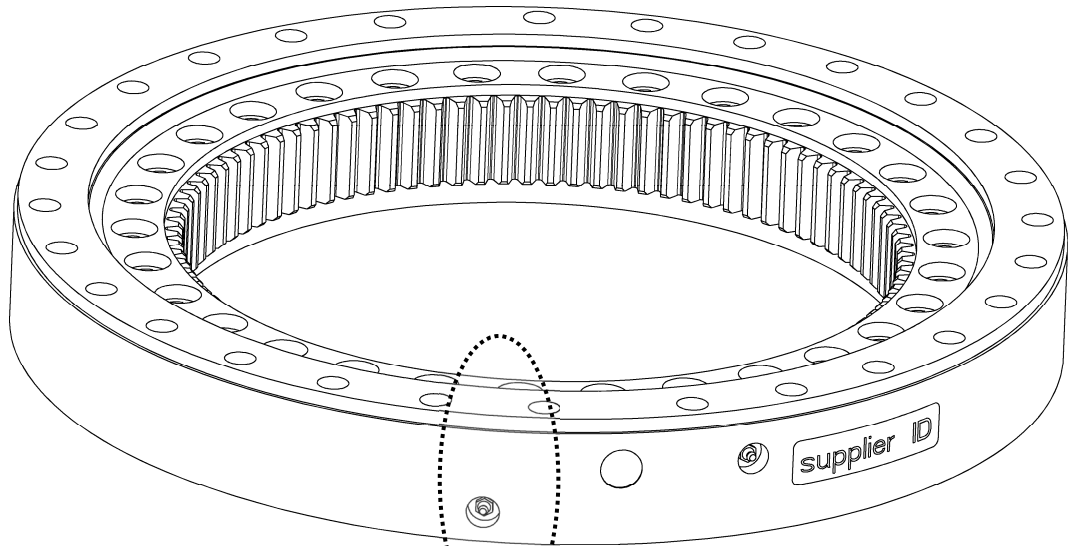
Page **23** of **35**

Date **March 2021**

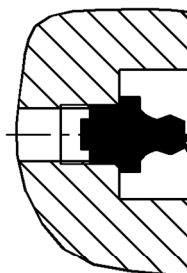
Product type **DCC-30-D**

Slewing ring

Number **500591-01**

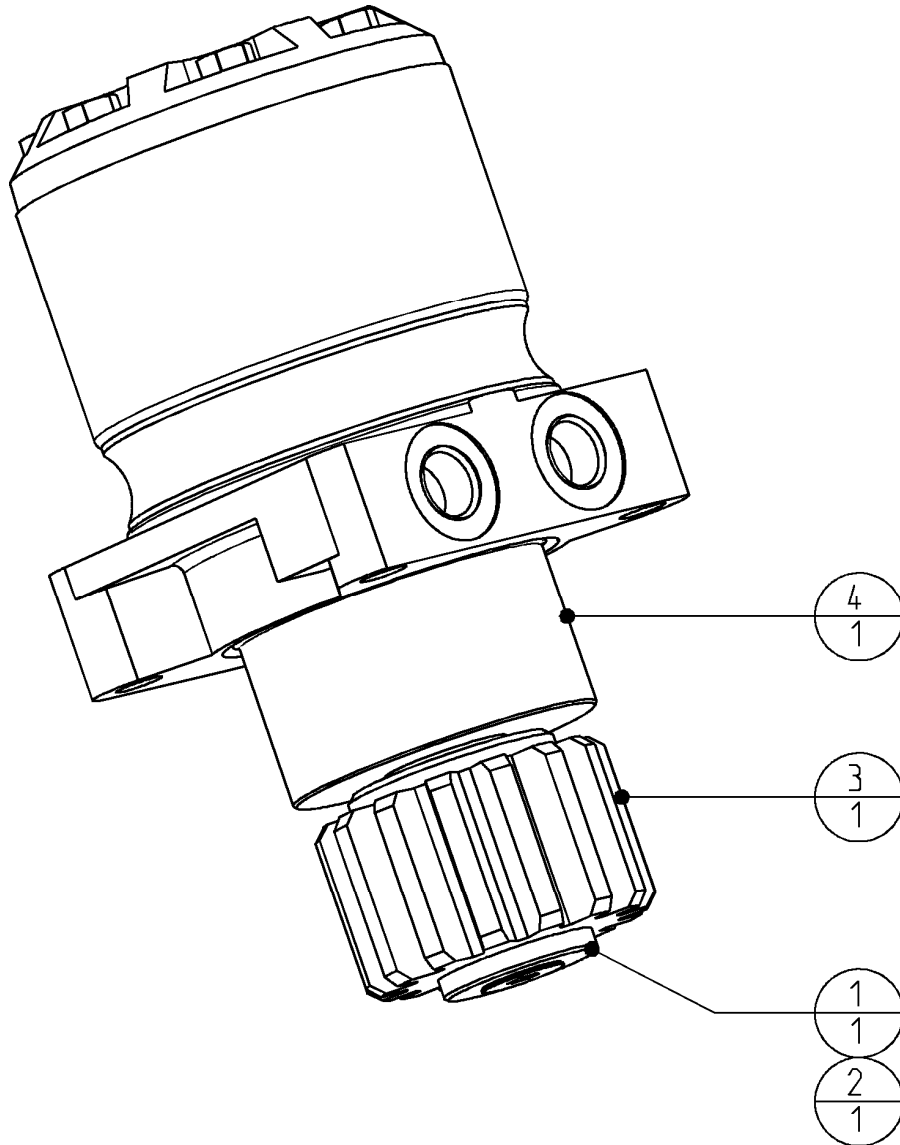


**2x seal 256060900
mount with Loctite 480**



**2x grease nipple
500560**

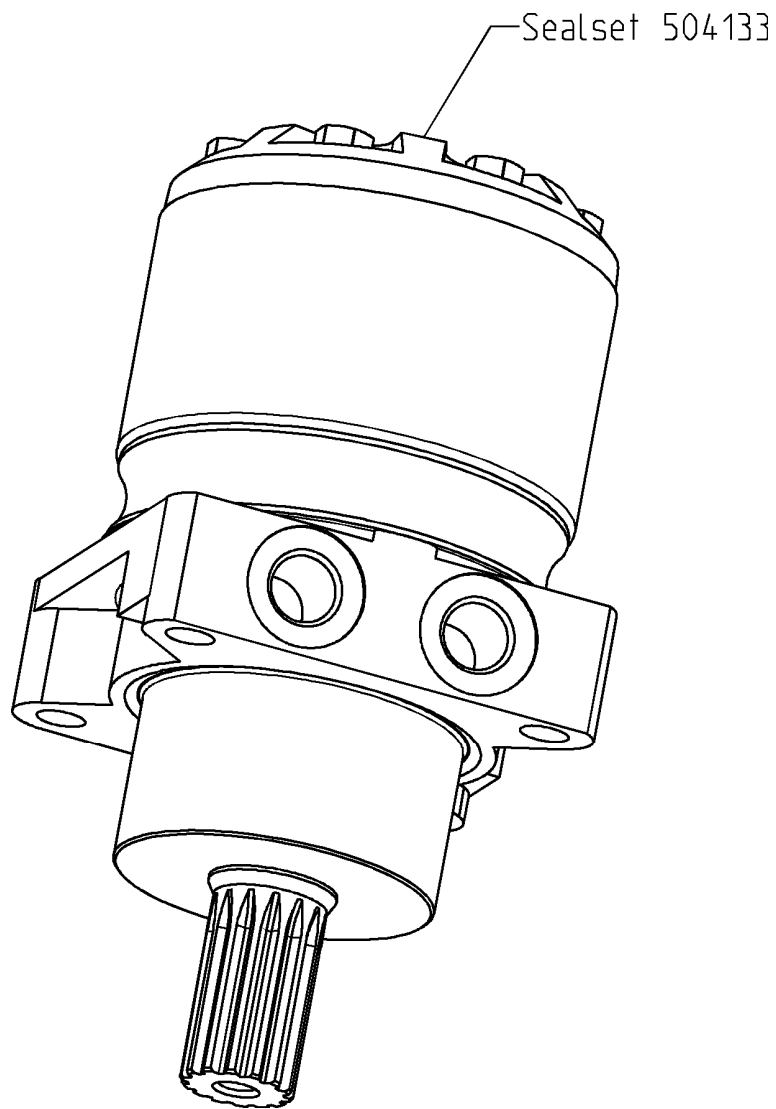
Concrete Crusher	Page	24	of	35
	Date	March 2021		
	Product type	DCC-30-D		
Hydraulic motor GP	Number	407855-02		



Loctite 638

4	501801	Hydraulic motor	1
3	501099	Pinion	1
2	500347	Flat countersunk head cap screws	1
1	407692	Washer	1
POS	PARTNUMBER	PARTNAME	QT

Concrete Crusher	<i>Page</i>	25	<i>of</i>	35
	<i>Date</i>	March 2021		
	<i>Product type</i>	DCC-30-D		
Hydraulic motor	<i>Number</i>	501801-00		



Concrete Crusher

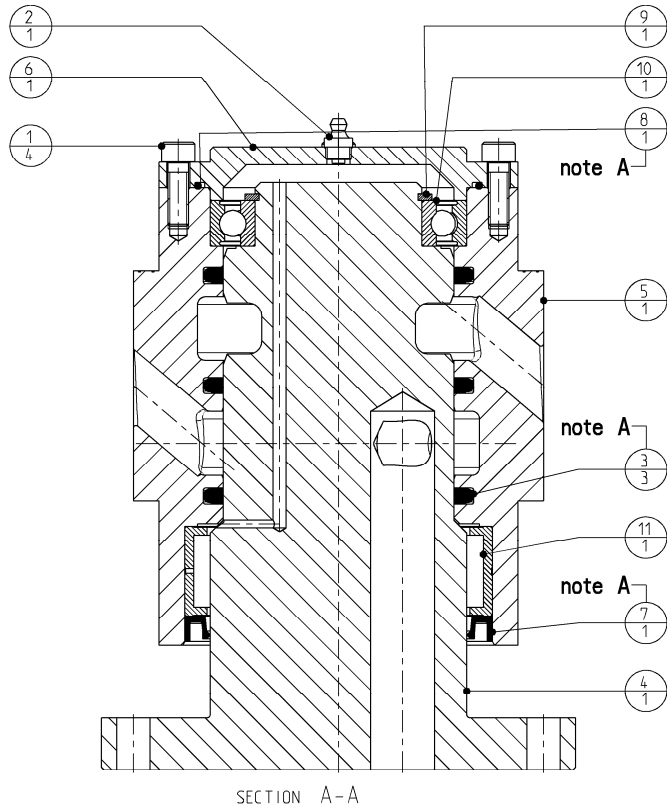
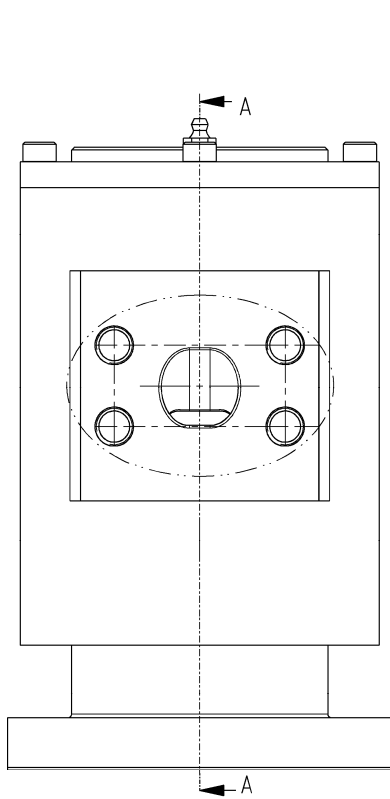
Page **26** of **35**

Date **March 2021**

Product type **DCC-30-D**

Swivel GP

Number **501900-02**

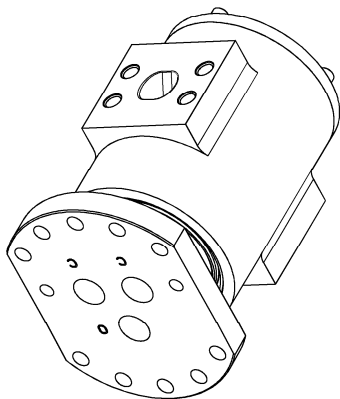
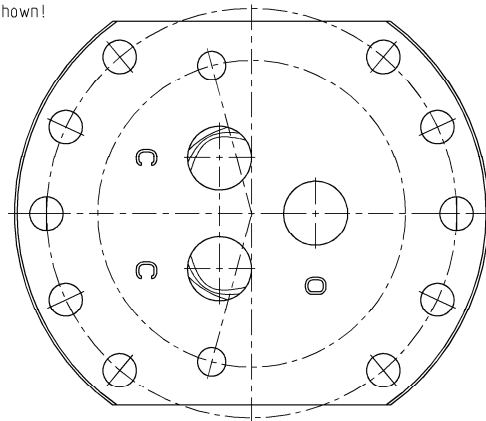
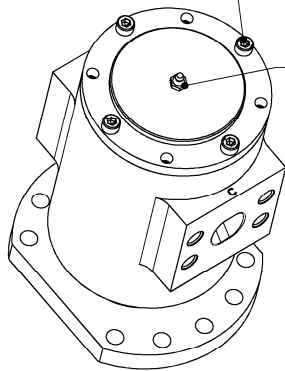


Note A:

Part of sealset 504199

Mount bolts on positions as shown!

Grease complete swivel after assembling!

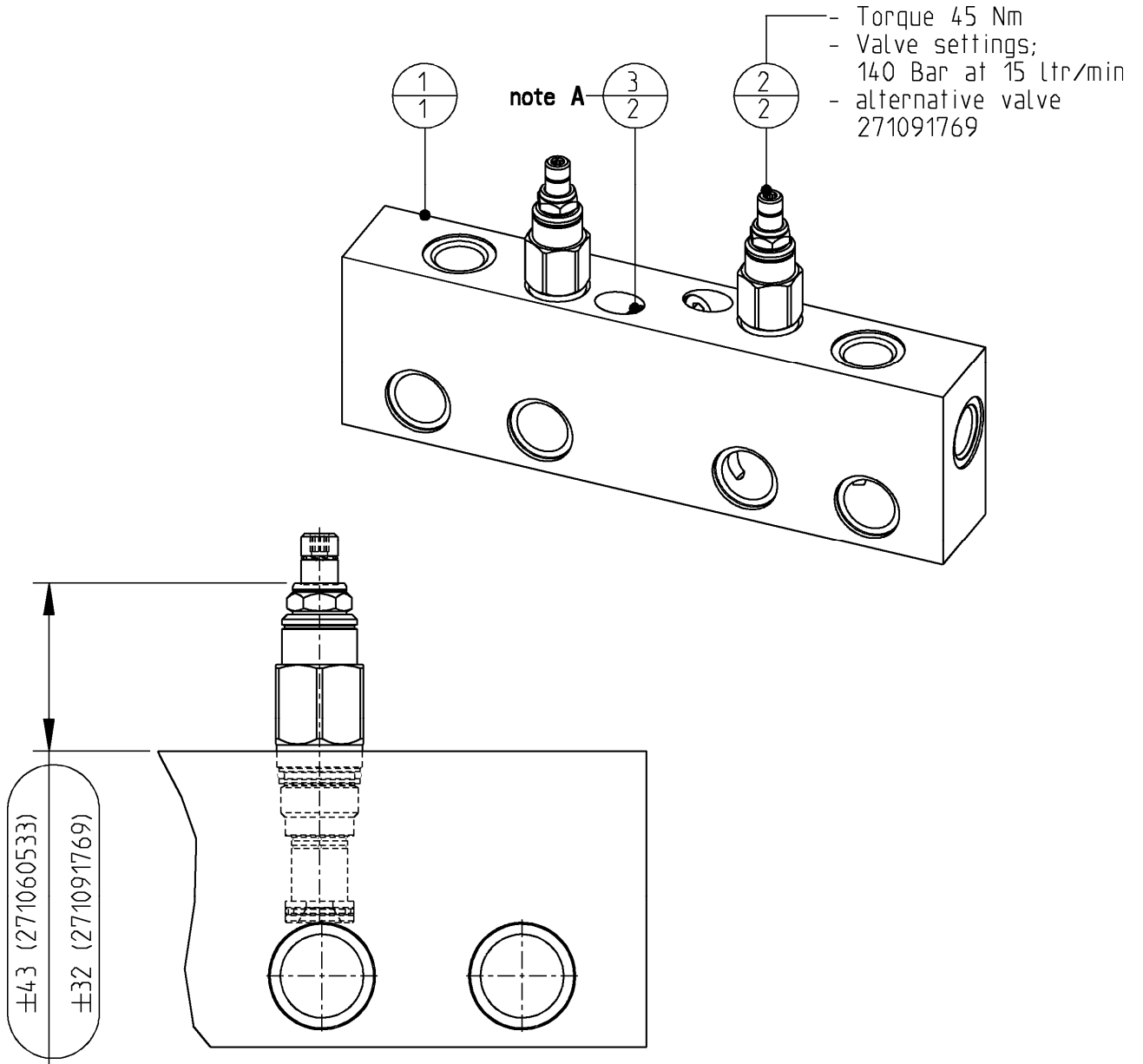


11	507055	Bearing needle	1
10	507054	Ball bearing	1
9	506085	Retainingring	1
8	504192	O-ring	1
7	504191	Radial Oil Seal	1
6	501903	Cover	1
5	501902	Housing	1
4	501901	Stator	1
3	500630	Roto seal Ø90xØ105,5x6,3	3
2	500560	Grease - nipple	1
1	500223	Hex. socket head cap screw	4
POS	PARTNUMBER	PARTNAME	QT

Concrete Crusher

Page	27	of	35
Date	March 2021		
Product type	DCC-30-D		
Number	501733-01		

Valve GP

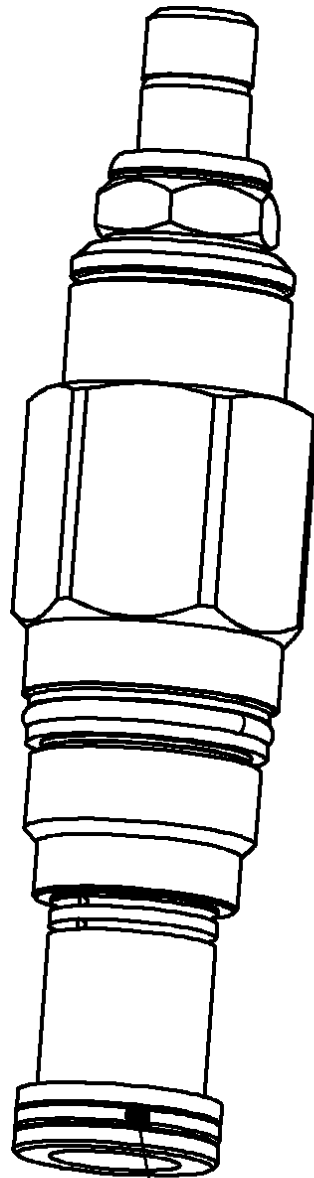


Note A:

Mount with Cyberbound TT62 according instructions at the end of this partsbook.

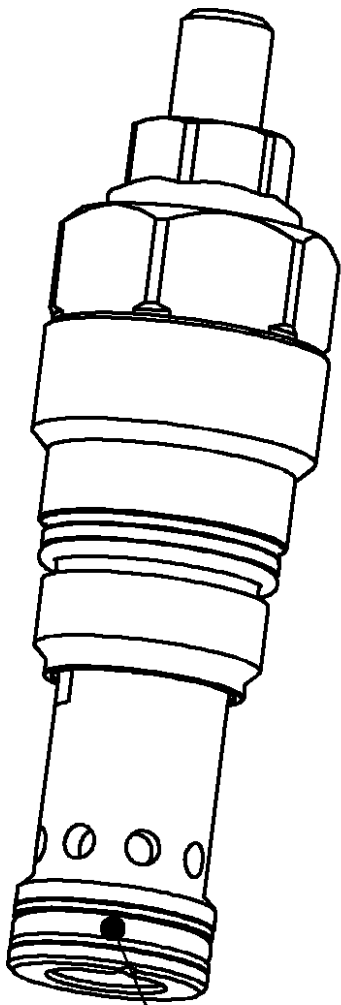
3	290066544	Blanking end ISO 6149	2
2	271060533	Cartridge- relief valve	2
1	501734	Baseplate	1
POS	PARTNUMBER	PARTNAME	QT

Concrete Crusher	<i>Page</i>	28	<i>of</i>	35
	<i>Date</i>	March 2021		
	<i>Product type</i>	DCC-30-D		
Cartridge – relief valve	<i>Number</i>	271060533-C		



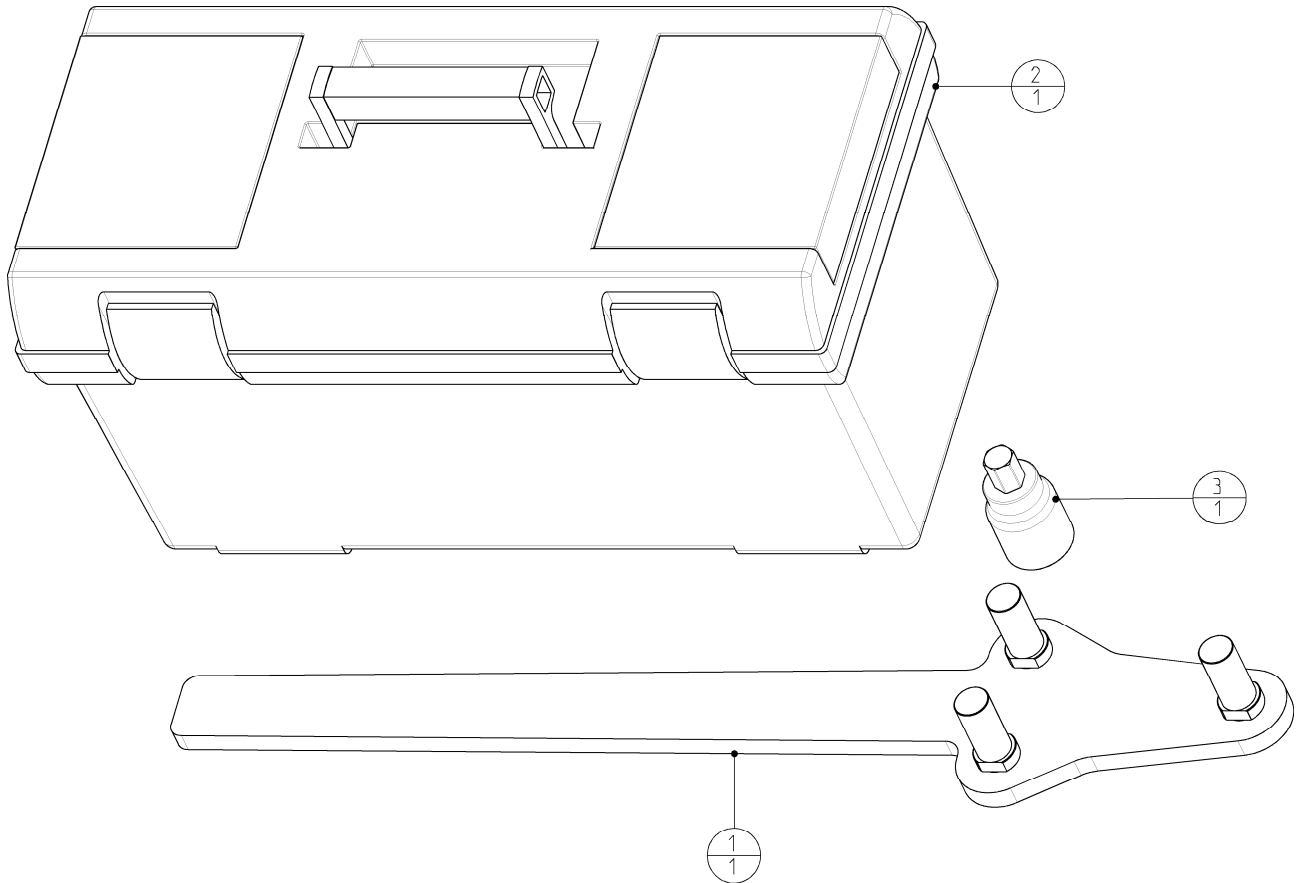
— Sealset 504203

Concrete Crusher	<i>Page</i>	29	<i>of</i>	35
	<i>Date</i>	March 2021		
	<i>Product type</i>	DCC-30-D		
Cartridge – relief valve	<i>Number</i>	271091769-A		



Sealset 504213

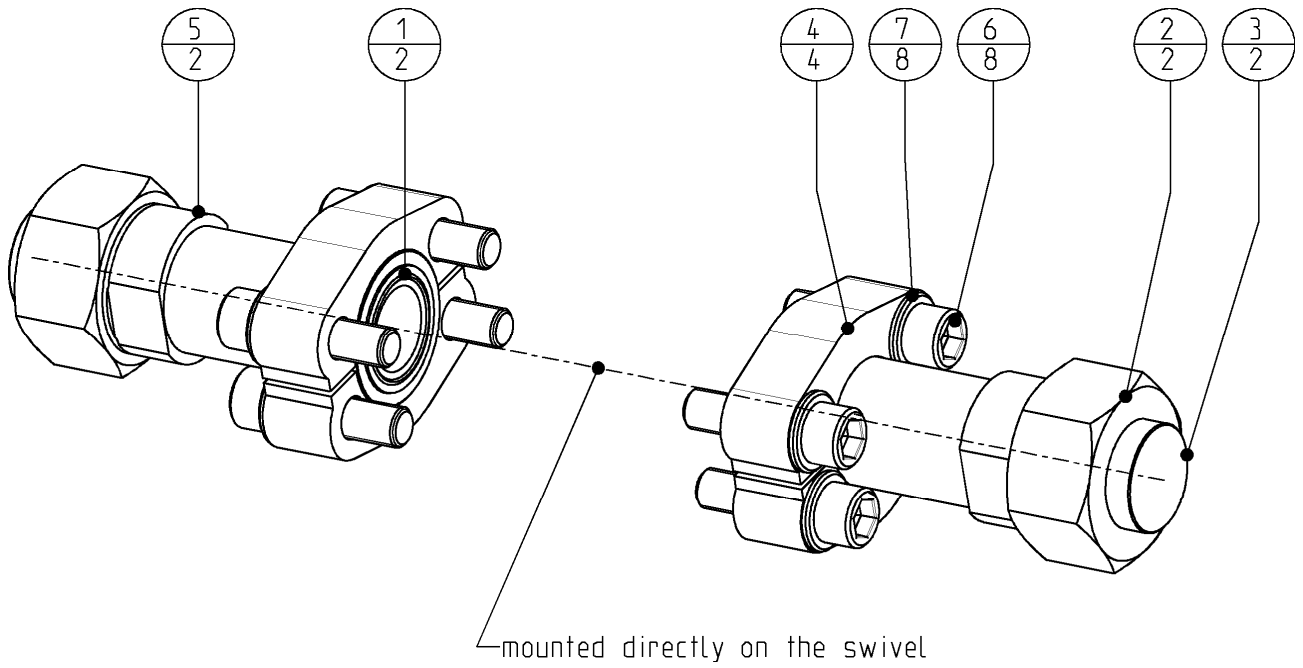
Concrete Crusher	Page	30	of	35
	Date	March 2021		
	Product type	DCC-30-D		
Service kit (optional)	Number	408988-00		



3	192072798	Screwdriver bit socket	1
2	508136	Toolbox GP	1
1	404990	Key GP	1
POS	PARTNUMBER	PARTNAME	QT

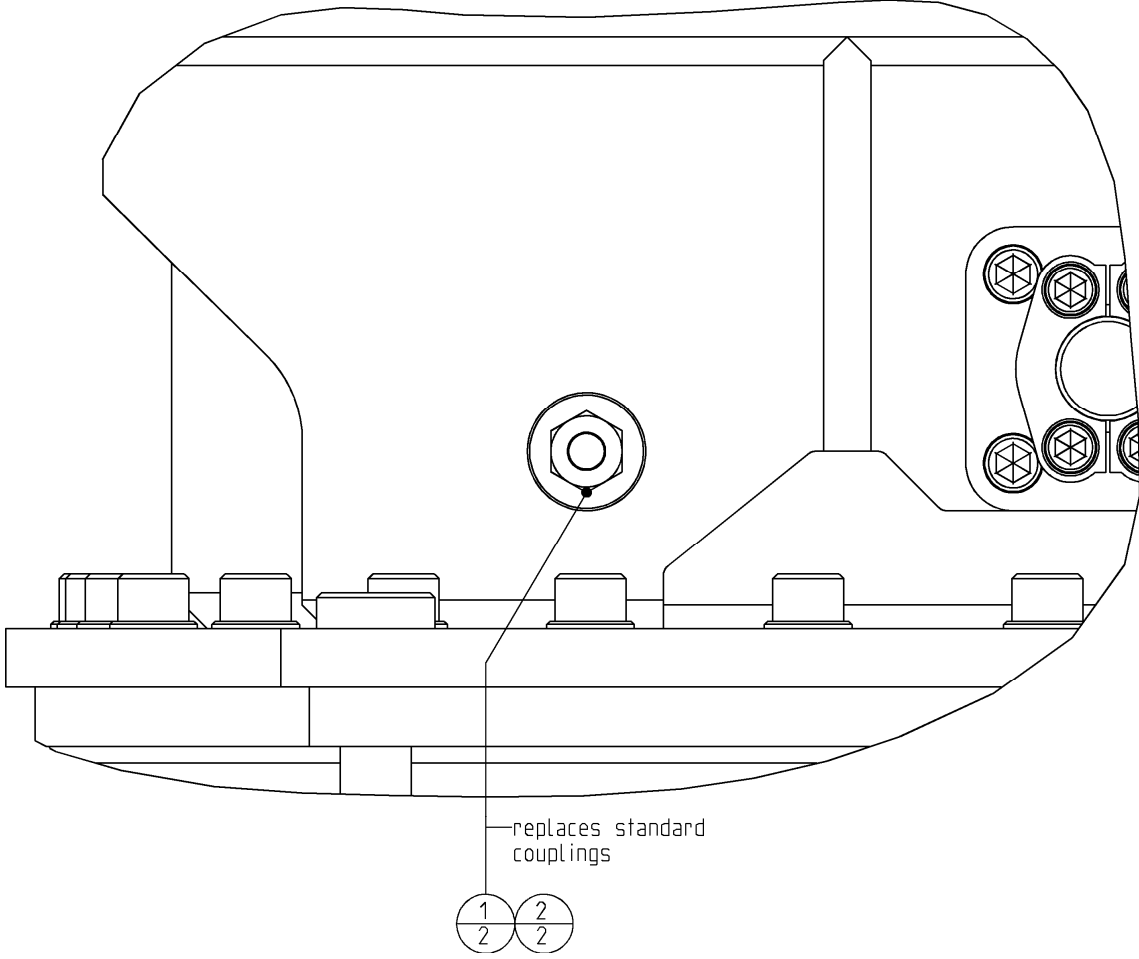
Concrete Crusher

Page	31	of	35
Date	March 2021		
Product type	DCC-30-D		
Fitting kit 38S (optional)	Number	408496-01	



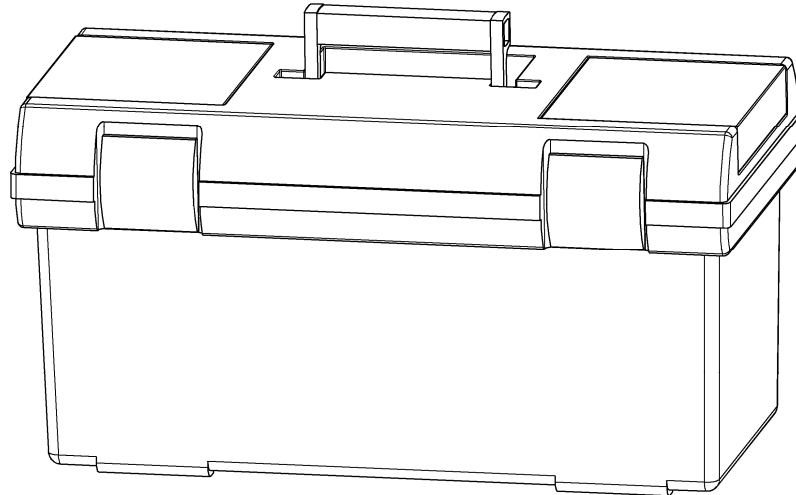
7	122000163	Washer normal	8
6	506005	Hex. socket head cap screw	8
5	503912	SAE flange adapter XLong	2
4	503504	SAE split flange	4
3	500949	Blanking plug	2
2	500930	Nut coupling	2
1	500603	Seal - flange	2
POS	PARTNUMBER	PARTNAME	QT

Concrete Crusher	Page	32	of	35
	Date	March 2021		
	Product type	DCC-30-D		
Fitting kit JIC (optional)	Number	406403-00		



2	503662	Blanking cap	2
1	503650	Male stud coupling	2
POS	PARTNUMBER	PARTNAME	QT

Concrete Crusher	Page	33	of	35
	Date	March 2021		
	Product type	DCC-30-D		
Toolbox	Number	508136-02		



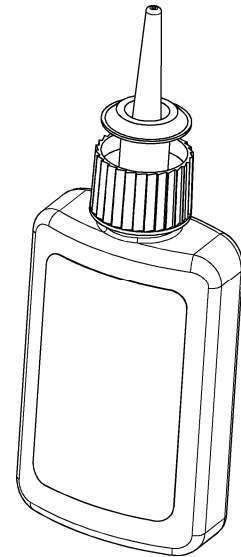
**Content of toolbox,
completed with shims, partsbook and manual of the shear**

				25	257013302	Kantseal 15,54 x 2,51	2
				24	121060762	Locknut M10 SEAL LOCK	2
				16	504009	O-ring 44,04x 3,53	3
				17	504017	O-ring 36,09x 3,53	2
				18	504048	O-ring 25,3 x 2,4	3
				19	504047	O-ring 20,3 x 2,4	3
				20	504046	O-ring 16,3 x 2,4	3
				21	504070	O-ring 12,37x 2,62	3
				22	504045	O-ring 12,0 x 2,0	3
				23	504043	O-ring 6,0 x 1,5	3
				15	504041	Seal 1-1/4" 38,8x45,8x2	2
				14	504040	Seal 1" 29,7x35,7x2	2
				13	504039	Seal 3/4" 23,9x29,2x1,5	2
				12	504036	Seal 1/4" 11,6x16,5x1,5	2
				11	504038	Seal 1/2" 18,5x23,9x1,5	2
				10	504097	Seal Flange 1-1/2"	3
				9	500603	Seal Flange 1-1/4"	3
				8	500601	Seal Flange 1"	3
				7	500600	Seal Flange 3/4"	3
				6	189069365	Sticker "Free to tank"	2
				5	508152	Sticker "Maintenance"	4
				4	508113	Sticker "Safety"	4
				3	503638	Testpoint 7/16"UNF	2
				2	500740	Testpoint G1/4"	2
				1	508137	Toolbox 580x290x300	1
				POS	PARTNUMBER	PARTNAME	QT
45	251065237	Back-up ring 50,0x 44,6x1,4	2				
44	504026	Back-up ring 44,5x42,5x2,9	2				
43	290058186	Blanking end M33x2 OR	1				
42	290058185	Blanking end M27x2 OR	1				
41	290058184	Blanking end M22x1,5 OR	1				
40	290066544	Blanking end M10x1,0 OR	1				
39	500654	Blanking end 1" -WD	1				
38	500653	Blanking end 3/4"-WD	1				
37	500652	Blanking end 1/2"-WD	1				
36	500651	Blanking end 3/8"-WD	1				
35	500650	Blanking end 1/4"-WD	1				
34	500649	Blanking end 1/8"-WD	1				
33	502562	Bleedingscrew M10 L=58,5	2				
32	120075770	Blanking screw M8x1,0	4				
31	502000	Filter line built-in	2				
30	506046	Glue Loctite 2701 5ml	1				
29	195050158	Glue TT62 pump gel	1				
28	508139	Grease cartridge	1				
27	508138	Grease pistol	1				
26	500560	Grease-nipple, straight M10x1	10				

Concrete Crusher	Page	34	of	35
	Date	March 2021		
	Product type	DCC-30-D		
Additional parts	Number	n.a.		

Chemical lock

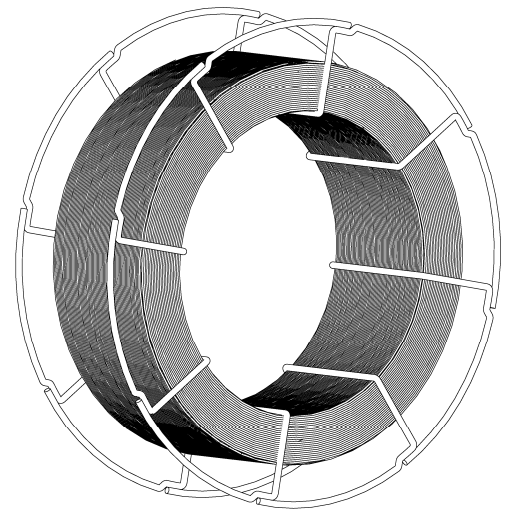
195050158	Cyberbond TT62 Pumpgel	1
506018	Loctite 480 Flacon 20 gr	1
506017	Loctite 638 Flacon 50 ml	1
506016	Loctite 270 Flacon 50 ml	1
PARTNUMBER	PARTNAME	QT



MAG welding wire

- for hard facing cutting blades
- 48-52 HRc
- Standards;
 - AWS A 5.21: no standard
 - EN ISO 14700: ~S Fe14
 - DIN: W.Nr. 1.8425
 - DIN 8555: MSG 2-GZ-500

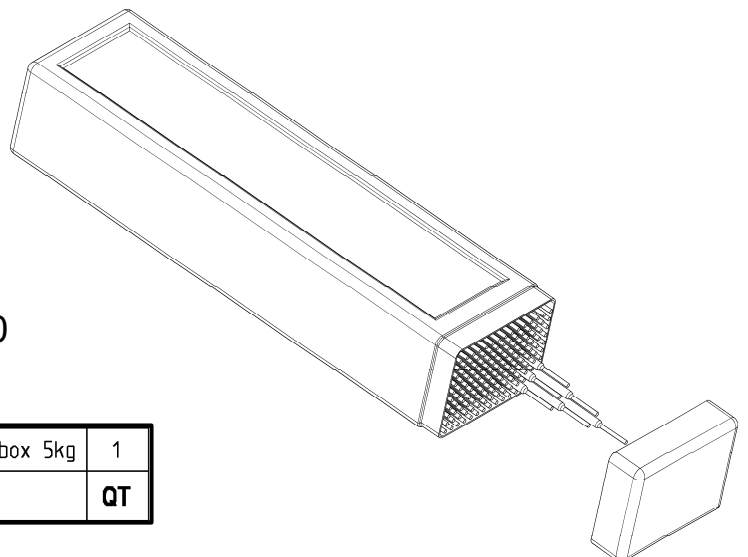
501237	Welding wire MAG; 1.8425. coil 15kg	1
PARTNUMBER	PARTNAME	QT



Welding electrodes

- for hard facing cutting blades
- 48-52 HRc
- Standards;
 - AWS A 5.21: no standard
 - EN ISO 14700: ~S Fe14
 - DIN: W.Nr. 1.8425
 - DIN 8555: MSG 2-GZ-500

501238	Weld. electr.:1.8425, Ø 2,5mm, box 5kg	1
PARTNUMBER	PARTNAME	QT



Concrete Crusher	Page	35	of	35
	Date	March 2021		
	Product type	DCC-30-D		
Instructions	Number	n.a.		

Mounting instructions for Cyberbound TT 62

This instruction shall guarantee that all hydraulic fittings and cartridges will be mounted and glued in correctly.

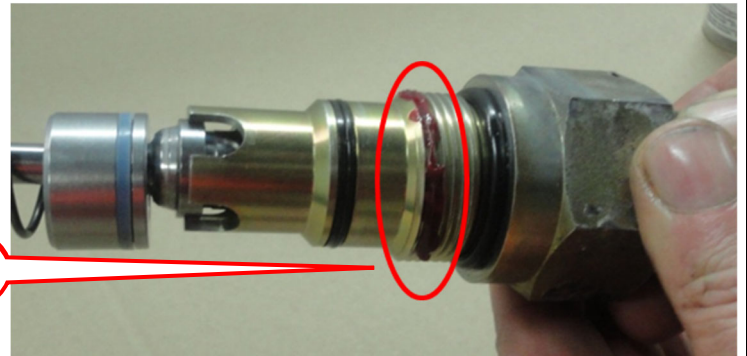
Procedure:

Clean and degrease thoroughly all components with a special cleaner for anaerobic adhesives (e.g. Loctite cleaner 7063) or acetone.

Apply on the outside thread only a bead of Cyberbond TT62 pump gel to approx. 2/3 of the girth of the second thread for fittings up to a diameter of 20mm or to the entire girth for fittings with a diameter larger than 20mm.



Cyberbound
TT 62



Clean from adhesive residues pressed out from the bore hole after fitting.

ATTENTION. The sealings shall be free of adhesive residues!

Tighten fittings with given fastening torques.

Standard torque values for bolts

(when not indicated)

Thread size	Torque (Nm) for quality		
	8.8	10.9	12.9
M8	22,5	32,4	38,7
M10	45,0	63,0	75,6
M12	77,4	109,0	131,0
M16	194,0	270,0	324,0
M20	369,0	522,0	630,0
M24	639,0	900,0	1080,0
M27	945,0	1305,0	1575,0
M30	1260,0	1800,0	2160,0



DEMAREC AND KINSHOFER WORLDWIDE

Netherlands:

Demarec

Demolition and Recycling Equipment BV

De Hork 32

5431 NS Cuijk

Netherlands

TEL. +31 (0) 485 442300

FAX +31 (0) 485 442120

Email:

info@demarec.com

United Kingdom:

Kinshofer UK Ltd.

4 Milton Industrial Court,

Horsfield Way, Bredbury

Stockport, Cheshire, SK6 2TA

United Kingdom

TEL. +44 (0) 161 - 406 7046

FAX +44 (0) 161 - 406 7014

Email:

sales@kinshofer.co.uk

France:

Kinshofer France S.A.R.L.

B.P. 20100

67213 Obernai Cedex

France

TEL. +33 (0) 388 39 55 00

FAX +33 (0) 388 79 06 75

Email:

info@kinshofer.fr

Czech Republic:

Kinshofer CZ s.r.o.

Cs. Legii 568

37810 Ceske Velenice

Czech Republic

TEL. +420 384 - 795 110

FAX +420 384 - 795 120

Headquarters:

Germany:

Kinshofer GmbH

Hauptstrasse 76

83666 Waakirchen

Germany

TEL. +49 (0) 8021 - 88 99 0

FAX +49 (0) 8021 - 88 99 37

Email:

info@kinshofer.com

North America:

Kinshofer North America

5040 Mainway Drive, Unit 11

Burlington, ON L7L 7G5

Canada

TEL. +1 (905) 335 2856

FAX +1 (905) 335 4529

Toll Free in Canada and USA:

TEL. 1-800-268-9525

Email:

sales-northamerica@kinshofer.com

Finland:

Kinshofer Aponox Oy

Terminaalitie 10

13430 Hämeenlinna

Finland

TEL. +358 (0)75 7540 200

FAX +358 (0)75 7540 210

Beijing:

Darda Kinshofer

Construction Machinery Co. Ltd.

Unit #306, Landmark Tower 2

8 Dongsanhuan Road

Beijing 100004

China

TEL. +86 (10) 6590 6422

FAX +86 (10) 6590 6423

Email:

info@darda.com.cn