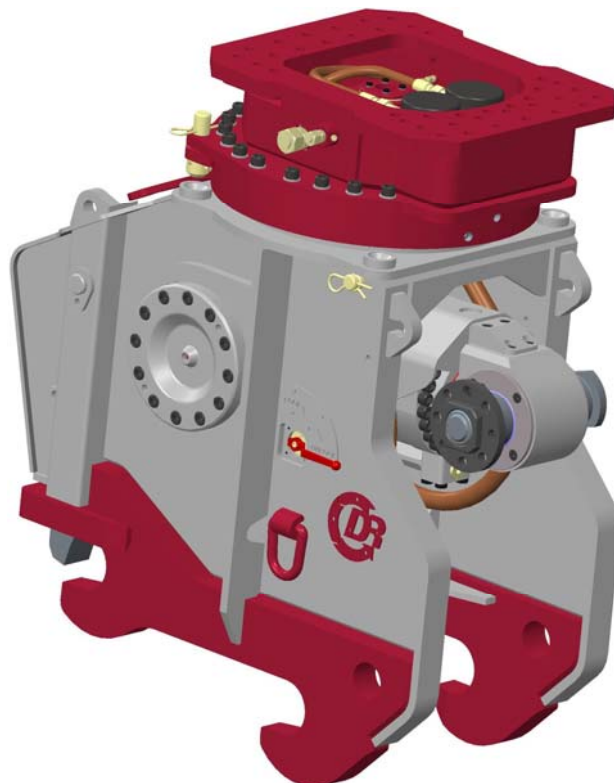




Partsbook
for
Multi Quick Processor
MQP-45-Y

Product	Part Number	Ref.
MQP-45-Y Serie 2	MQP45H000BAA5	



Partsbook_mqp45h000baa5-a.docx

August 2014

Demarec Demolition and Recycling Equipment BV

Den Hoek 10, 5845 EL St. Anthonis, Netherlands

TEL.
FAX

+31 (0) 485 442300
+31 (0) 485 442120

INTERNET
E-MAIL

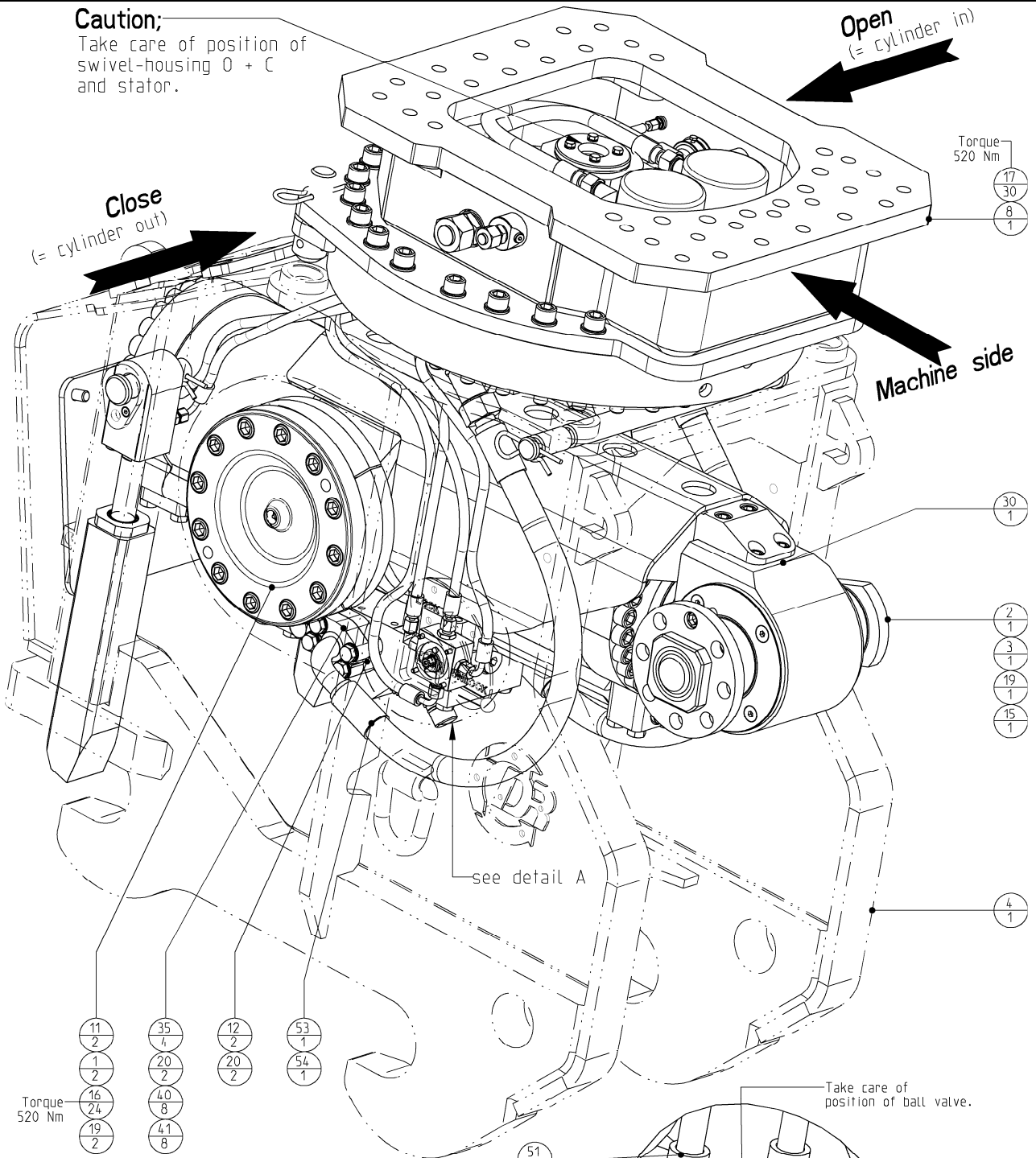
www.demarec.com
info@demarec.com

Multi Quick Processor

Housing GP

Page	1	of	24
Date	August 2014		
Product type	MQP-45-Y		
Number	MQP45H000BAA5-A		

Caution;
Take care of position of swivel-housing O + C and stator.

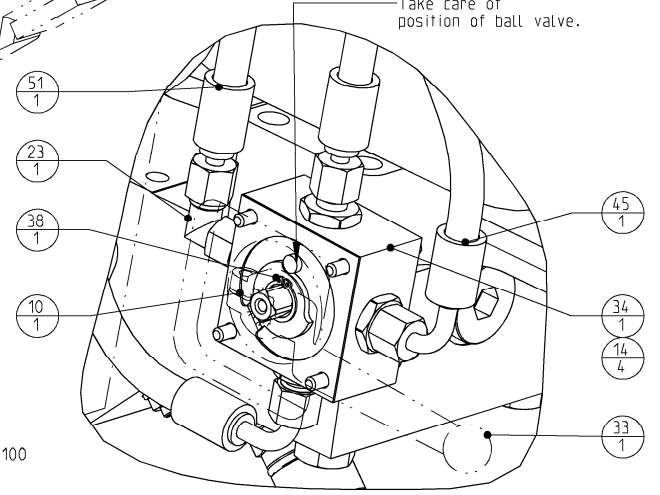


Torque 520 Nm

- 16/24/19
- 35/4
- 20/2
- 40/8
- 41/8

note A
Mount according instructions WI-010.

Take care of position of ball valve.

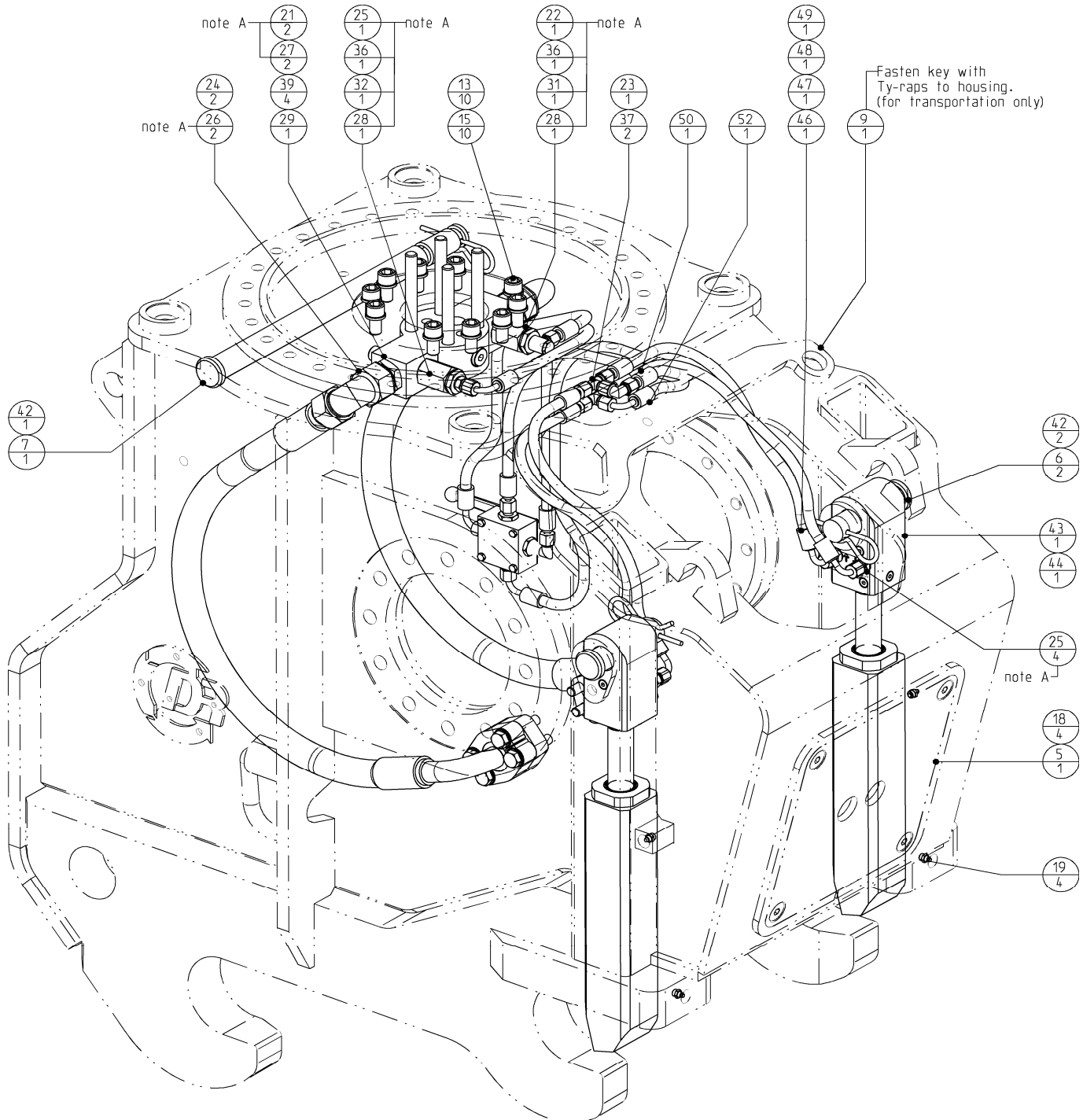


Detail A
SCALE 67:100

Multi Quick Processor

Page	2	of	24
Date	August 2014		
Product type	MQP-45-Y		
Number	MQP45H000BAA5-A		

Housing GP



Multi Quick Processor	<i>Page</i>	3	<i>of</i>	24
	<i>Date</i>	August 2014		
	<i>Product type</i>	MQP-45-Y		
Housing GP	<i>Number</i>	MQP45H000BAA5-A		

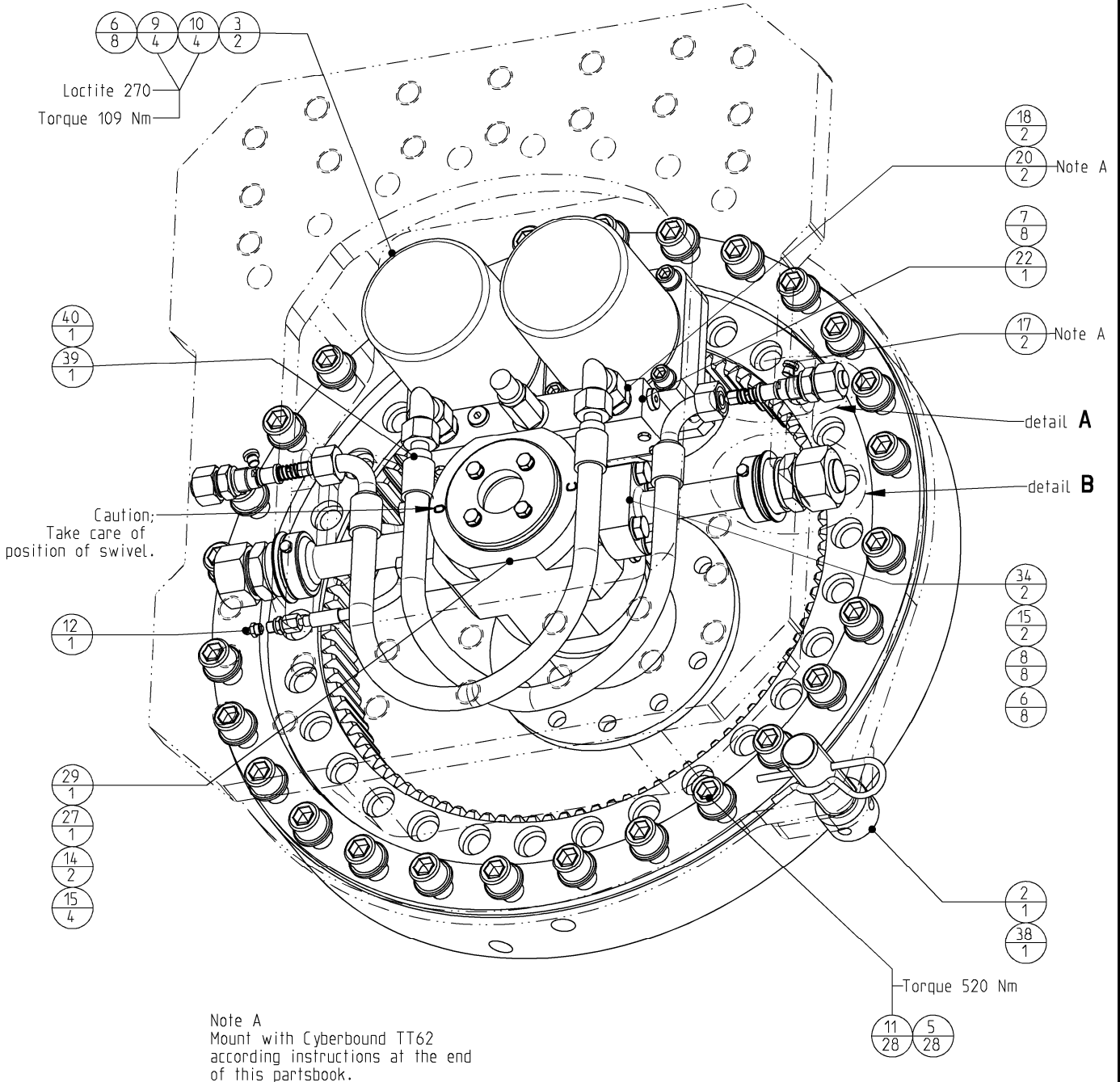
--	--	--	--	--	--	--	--	--	--

					28	500741	Sleeve		2
					27	500740	Test-point		2
54	505154_RH_RM-MQP45	Hydr. hose asm. 1" SAE 100R13	1		26	500698	Male stud coupling		2
53	505154_LH_RM-MQP45	Hydr. hose asm. 1" SAE 100R13	1		25	500691	Male stud coupling		5
52	505040_VG03	Hydr. hose asm. 1/4" SAE 100R2AT	1		24	500676	Adjustable male stud elbow		2
51	505040_VG02	Hydr. hose asm. 1/4" SAE 100R2AT	1		23	500671	Adjustable male stud elbow		2
50	505013_VG03	Hydr. hose asm. 1/4" SAE 100R2AT	1		22	500661	Banjo Coupling		1
49	505012_VG09	Hydr. hose asm. 1/4" SAE 100R2AT	1		21	500652	Blanking end		2
48	505012_VG08	Hydr. hose asm. 1/4" SAE 100R2AT	1		20	500603	O-ring		4
47	505012_VG07	Hydr. hose asm. 1/4" SAE 100R2AT	1		19	500560	Grease - nipple		7
46	505012_VG06	Hydr. hose asm. 1/4" SAE 100R2AT	1		18	500358	Flat countersunk head cap screws		4
45	505007_VG03	Hydr. hose asm. 1/4" SAE 100R2AT	1		17	500302	Hex. socket head cap screw		30
44	502755_RH	Cylinder GP	1		16	500276	Hex. socket head cap screw		24
43	502755_LH	Cylinder GP	1		15	500258	Hex. socket head cap screw		11
42	500504-2	Locking pin (hair-pin)	3		14	500099	Bolts Hexagon		4
41	122000163	Washer normal	8		13	500069	Washer spring		10
40	506050	Bolts Hexagon	8		12	406073	Flange - intermed. SAE 1 1/4"		2
39	506021	Hex. socket head cap screw	4		11	402918	Bearing housing		2
38	506020	Retainingring	1		10	402016	Lockplate		1
37	503556	Equal tee coupling	2		9	401982	Key 100 square + eye		1
36	503510	Reducing adapter BSPP	2		8	401766	Rotatorhead GP		1
35	503504	SAE split-flange	4		7	401727	Lock - pin		1
34	502191	Ball - valve	1		6	401726	Pin		2
33	502136	Handle - bend	1		5	401723	Cover		1
32	502122	Non-return valve	1		4	401706	Housing asm. machined		1
31	502118	Non-return valve	1		3	401313	Locknut		1
30	501300	Hydraulic Cylinder & Valve GP	1		2	400726	Pin		1
29	501035	Swivel - flange	1		1	400722	Ring		2
					POS	PARTNUMBER	PARTNAME		QT

Multi Quick Processor

Page	4	of	24
Date	August 2014		
Product type	MQP-45-Y		
Number	401766-11		

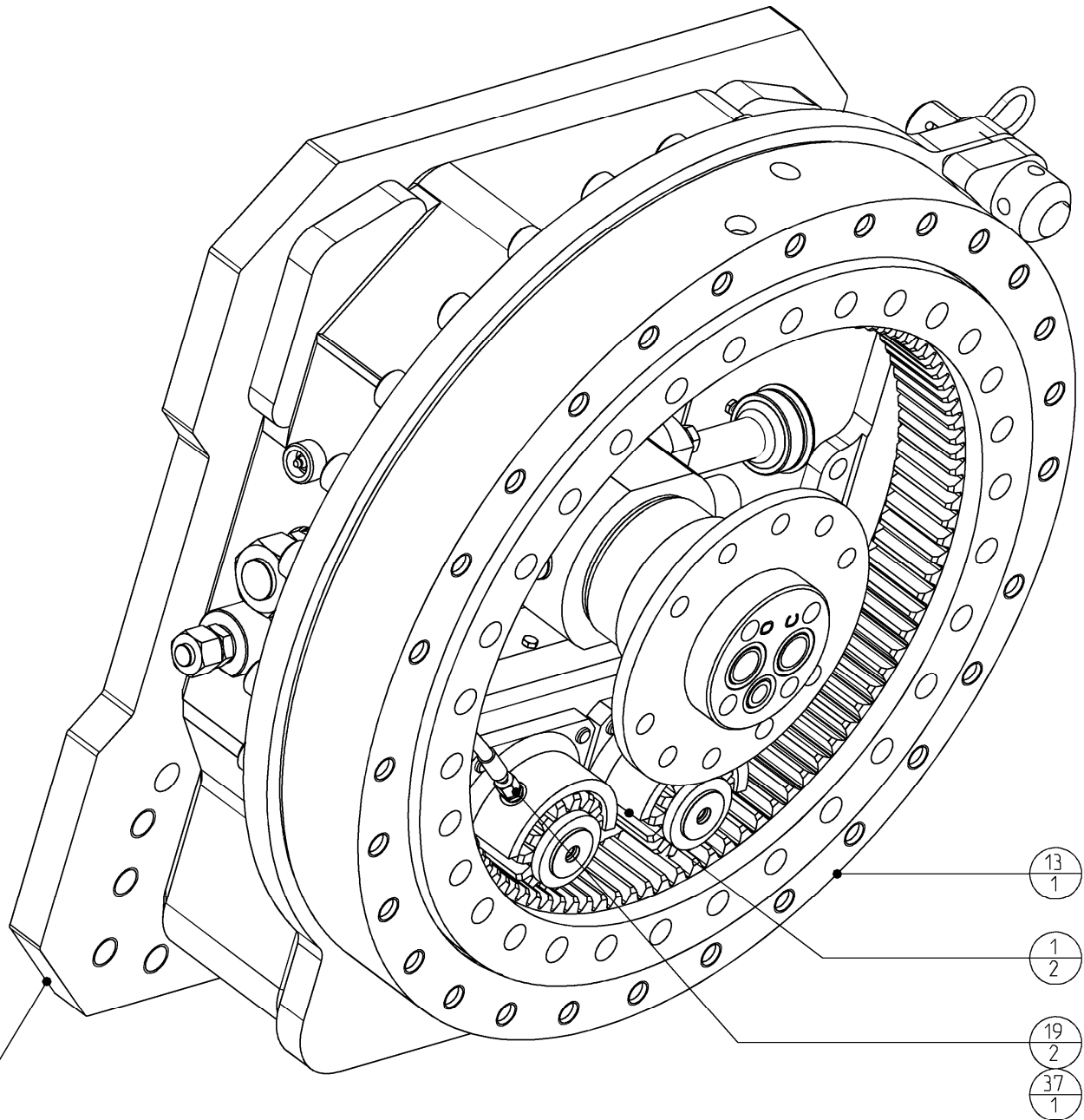
Rotatorhead GP



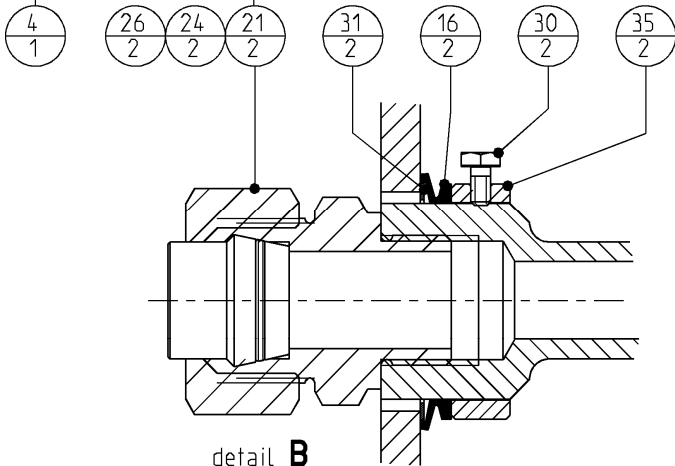
Multi Quick Processor

Page	5	of	24
Date	August 2014		
Product type	MQP-45-Y		
Number	401766-11		

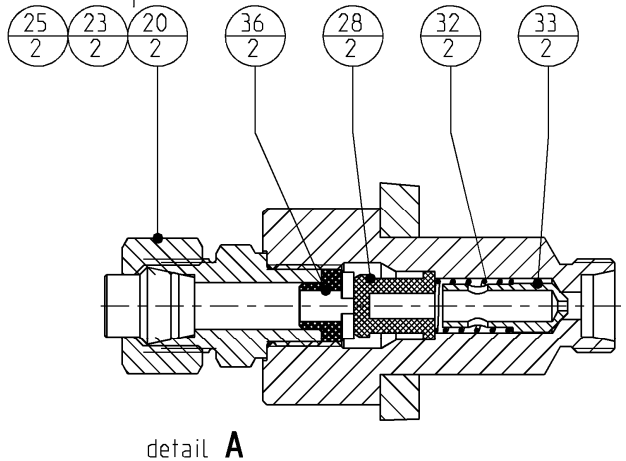
Rotatorhead GP



Note A



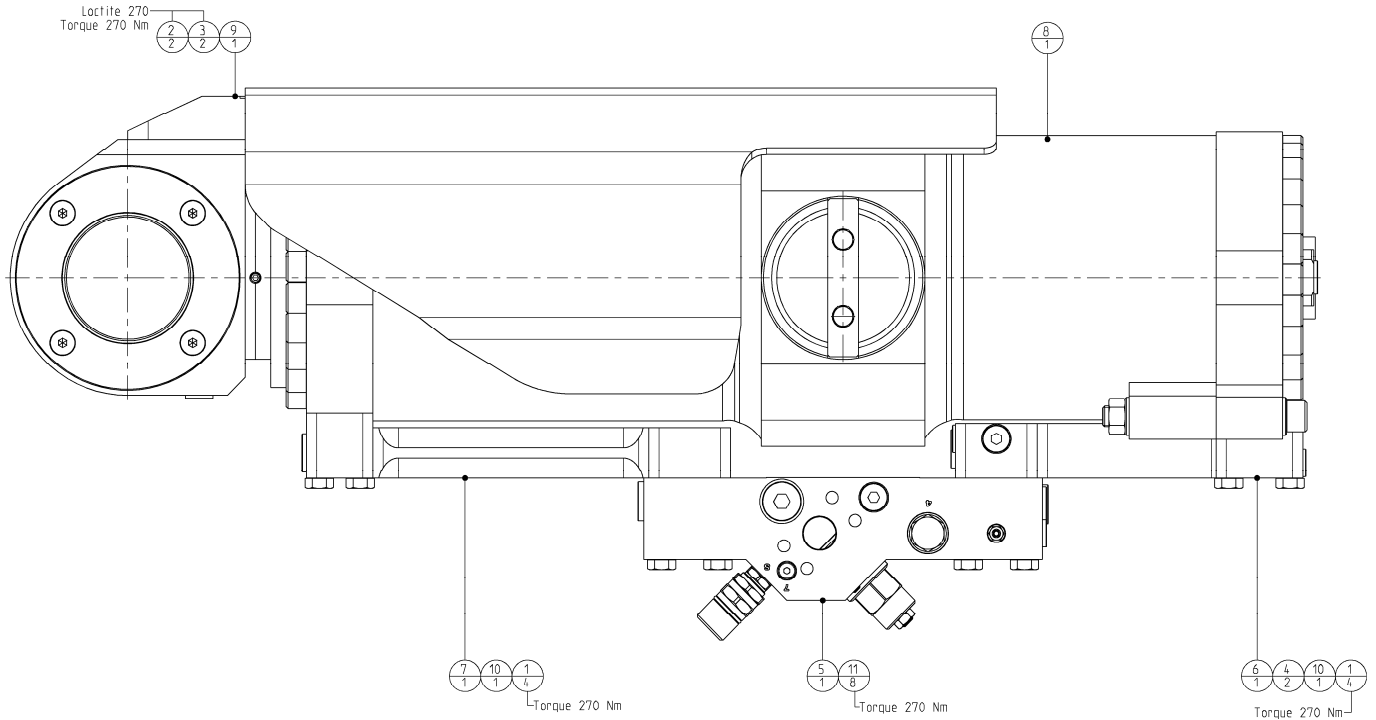
Note A



Multi Quick Processor

Page	7	of	24
Date	August 2014		
Product type	MQP-45-Y		
Number	501300-00		

Cylinder & Valve GP

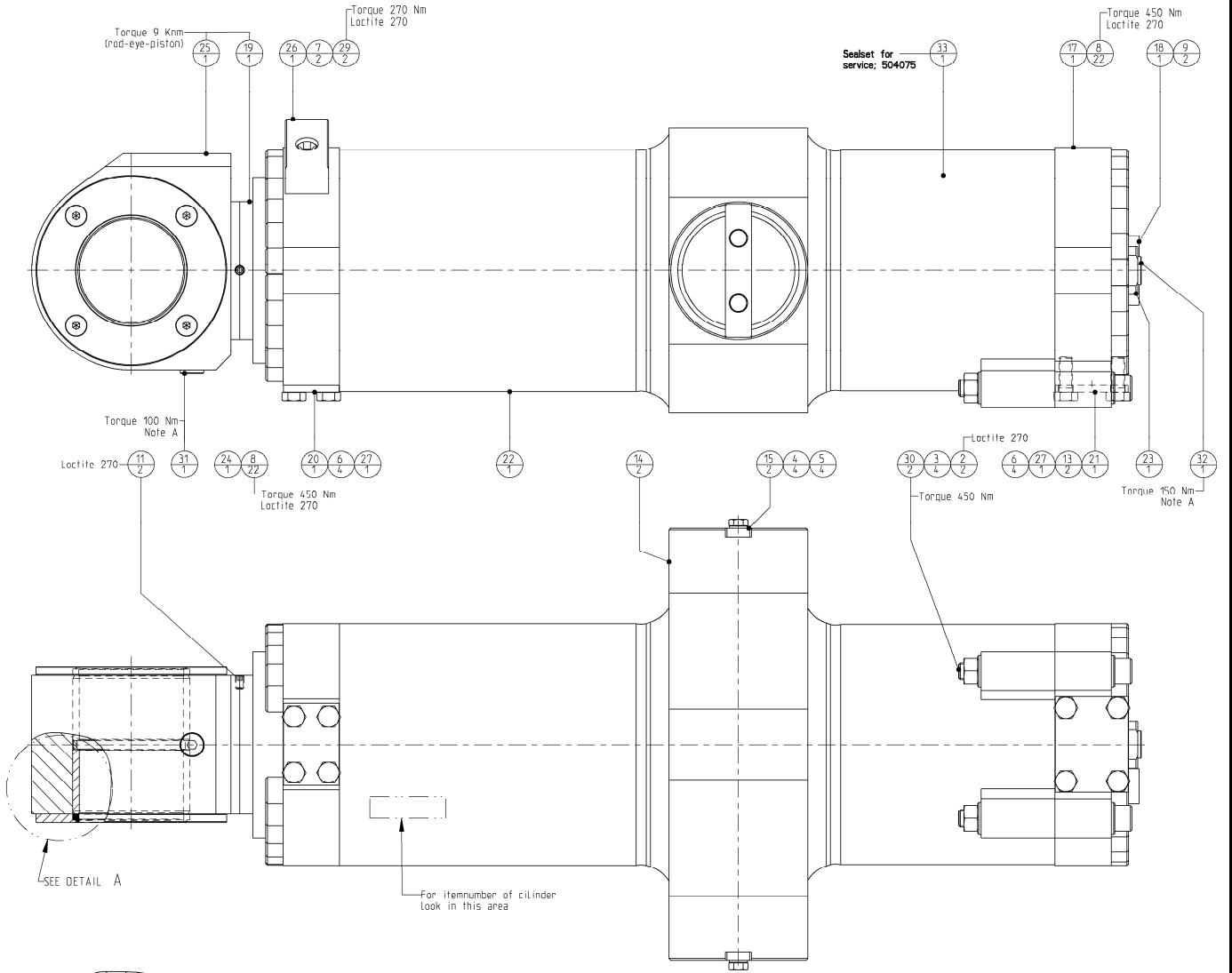


11	120013886	Bolts Hexagon	8
10	504009	O-ring	2
9	502723	Protection cap asm.	1
8	502696	Hydraulic cylinder GP	1
7	502413	Flange - rod GP	1
6	502412	Flange - bottom GP	1
5	501240	Valve GP DemaPower 2.0	1
4	500600	O-ring	2
3	500265	Hex. socket head cap screw	2
2	500262	Hex. socket head cap screw	2
1	500150	Bolts Hexagon	8
POS	PARTNUMBER	PARTNAME	QT

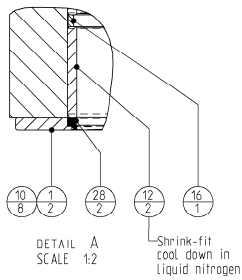
Multi Quick Processor

Page	8	of	24
Date	August 2014		
Product type	MQP-45-Y		
Number	502696-02		

Cylinder GP



SEE DETAIL A



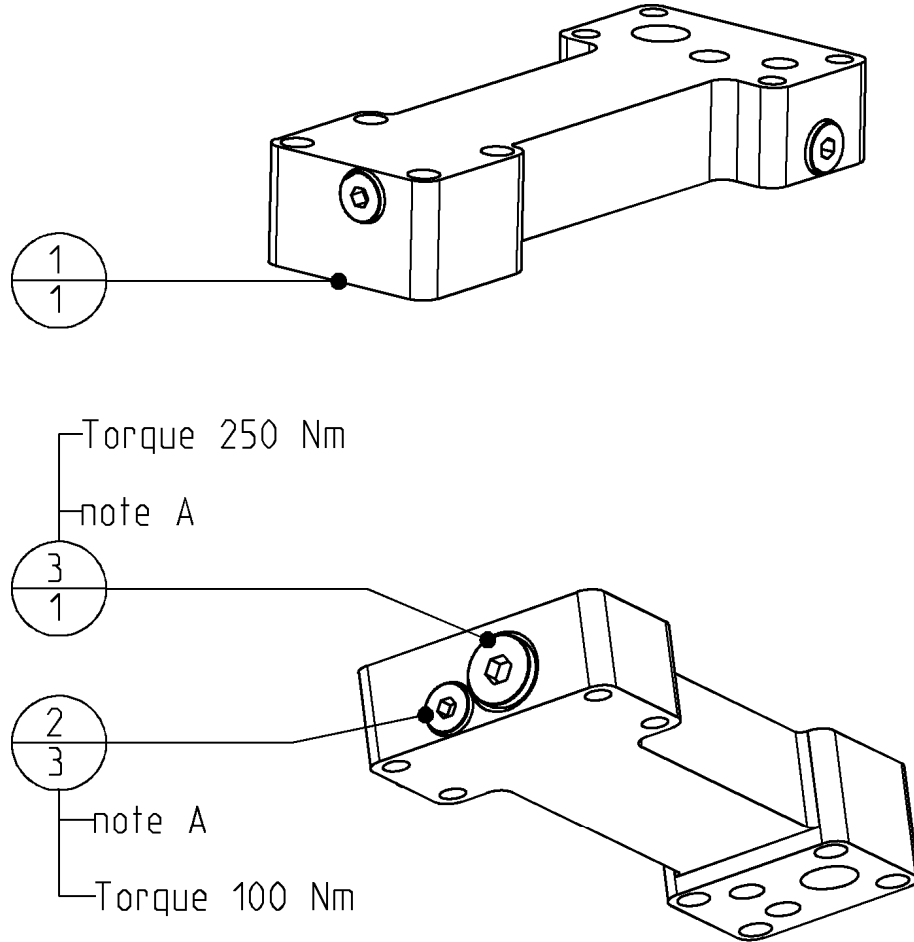
note A
Mount with Lyberbound 1162 according instructions at the end of this partsbook.

Multi Quick Processor	Page	9	of	24
	Date	August 2014		
	Product type	MQP-45-Y		
Cylinder GP	Number	502696-02		

33	502363_RM502511	Seal - set	1
32	290058185	Blanking end ISO 6149	1
31	290058184	Blanking end ISO 6149	1
30	506048	Hex. socket head cap screw	2
29	506033	Lockwasher - Schnorr	2
28	504020	Scraper	2
27	504009	O-ring	2
26	502728	Support - protection cap	1
25	502722	Rod - eye	1
24	502399	Cylinder - head	1
23	502398	Bolt - banjo asm.	1
22	502392	Cylinder - house asm.	1
21	502254	Blanking cover	1
20	502253	Blanking cover	1
19	502195	Rod - tube	1
18	502112	Lockplate	1
17	501301	Bottom asm.	1
16	501021	Spacer	1
15	501016	Lockplate	2
14	501015	Bearing	2
13	500600	O-ring	2
12	500572	Bushing	2
11	500417	Hex. socket set screw	2
10	500347	Flat countersunk head cap screws	8
9	500333	Flat countersunk head cap screws	2
8	500277	Hex. socket head cap screw	44
7	500260	Hex. socket head cap screw	2
6	500144	Bolts Hexagon	8
5	500133	Bolts Hexagon	4
4	500068	Washer spring	4
3	500055	Washer HV	4
2	500006	Nut Hexagon	2
1	401725	Spacer	2
POS	PARTNUMBER	PARTNAME	QT

Multi Quick Processor	Page	10	of	24
	Date	August 2014		
	Product type	MQP-45-Y		
Flange GP bottom	Number	502412-02		

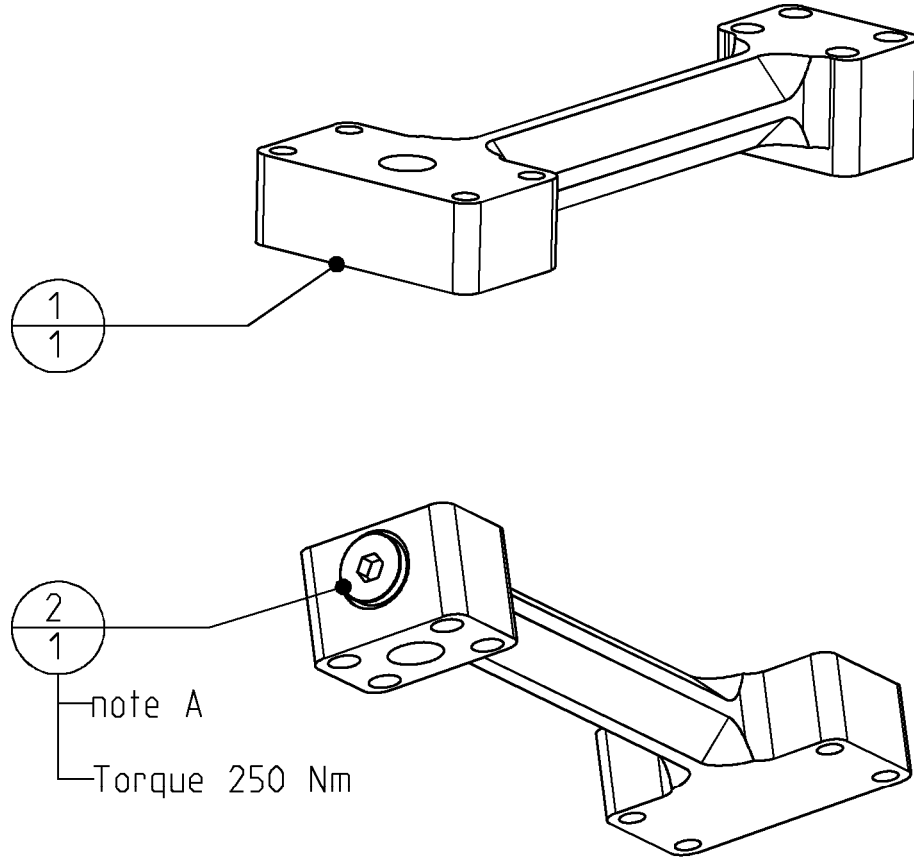
l



note A
Mount with Cyberbound TT62
according instructions at the end
of this partsbook.

3	290058186	Blanking end ISO 6149	1
2	290058184	Blanking end ISO 6149	3
1	502093	Flang - bottom	1
POS	PARTNUMBER	PARTNAME	QT

Multi Quick Processor	Page	11	of	24
	Date	August 2014		
	Product type	MQP-45-Y		
Flange GP rod	Number	502413-02		



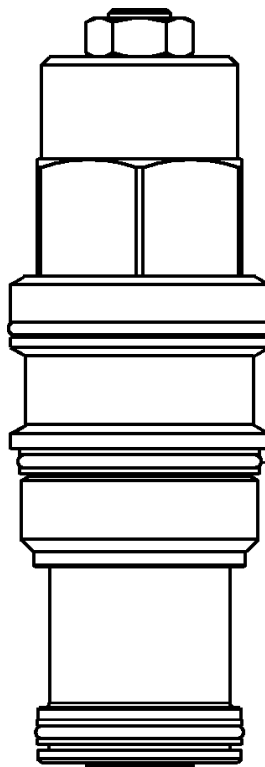
note A
Mount with Cyberbound TT62
according instructions at the end
of this partsbook.

2	290058186	Blanking end ISO 6149	1
1	502094	Flange - rod	1
POS	PARTNUMBER	PARTNAME	QT

Multi Quick Processor	<i>Page</i>	13	<i>of</i>	24
	<i>Date</i>	August 2014		
	<i>Product type</i>	MQP-45-Y		
Valve GP	<i>Number</i>	501240-00		

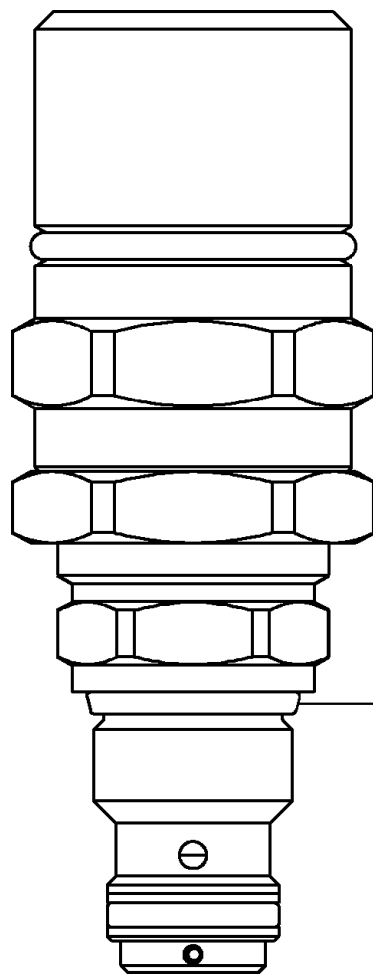
19	290058186	Blanking end ISO 6149	3
18	290058185	Blanking end ISO 6149	1
17	290058184	Blanking end ISO 6149	2
16	121067231	Nut Hexagon sealing	2
15	504009	Quad-ring	2
14	502117	Valve - check	1
13	501378	Valve - check	1
12	501377	Valve - check	1
11	501376	Valve - overload protection	1
10	501246	Blanking end	1
9	501245	Blanking plug	7
8	501244	Bleeding screw	1
7	501243	Orifice Ø0,5	2
6	501242	Valve - check	2
5	501241	Housing	1
4	501235	Valve - counter balance	1
3	500601	Seal - flange	1
2	500600	Seal - flange	1
1	500412	Hex. socket set screw	1
POS	PARTNUMBER	PARTNAME	QT

Multi Quick Processor	<i>Page</i>	14	<i>of</i>	24
	<i>Date</i>	August 2014		
	<i>Product type</i>	MQP-45-Y		
Counter balance valve	<i>Number</i>	501235-00		



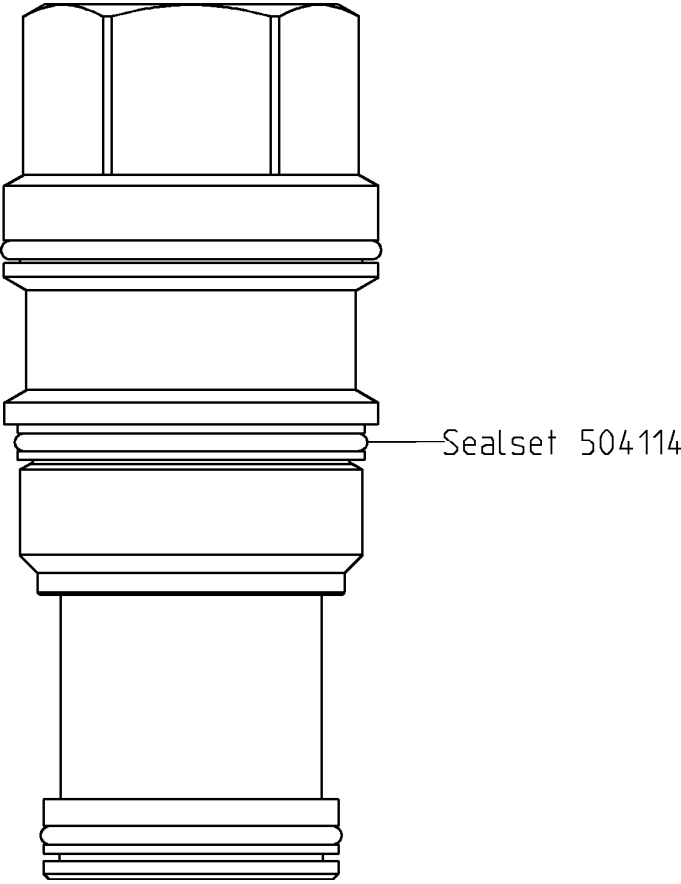
Sealset 504114

Multi Quick Processor	<i>Page</i>	15	<i>of</i>	24
	<i>Date</i>	August 2014		
	<i>Product type</i>	MQP-45-Y		
Overload protection valve	<i>Number</i>	501376-00		

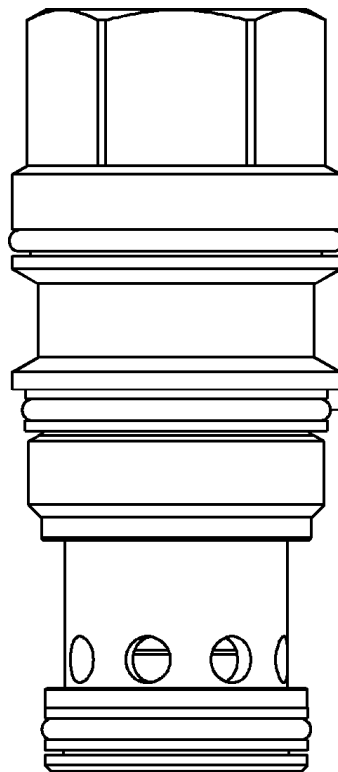


Sealset 504119

Multi Quick Processor	Page	16	of	24
	Date	August 2014		
	Product type	MQP-45-Y		
Check valve	Number	501377-00		

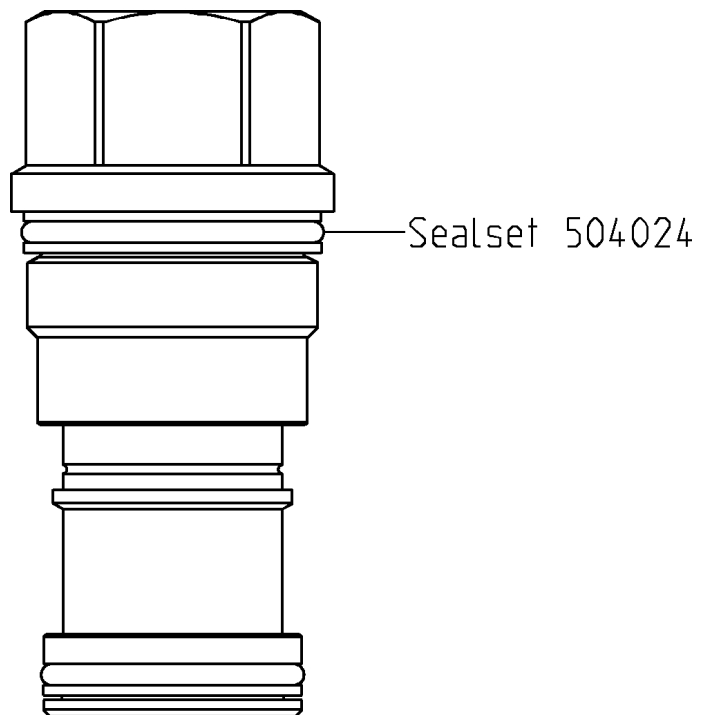


Multi Quick Processor	Page	17	of	24
	Date	August 2014		
	Product type	MQP-45-Y		
Check valve	Number	501378-00		

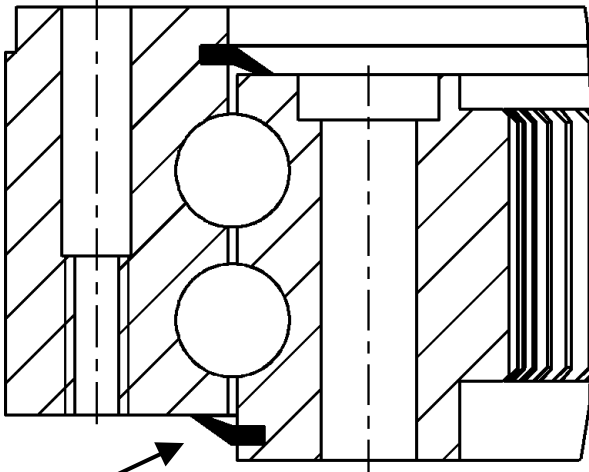
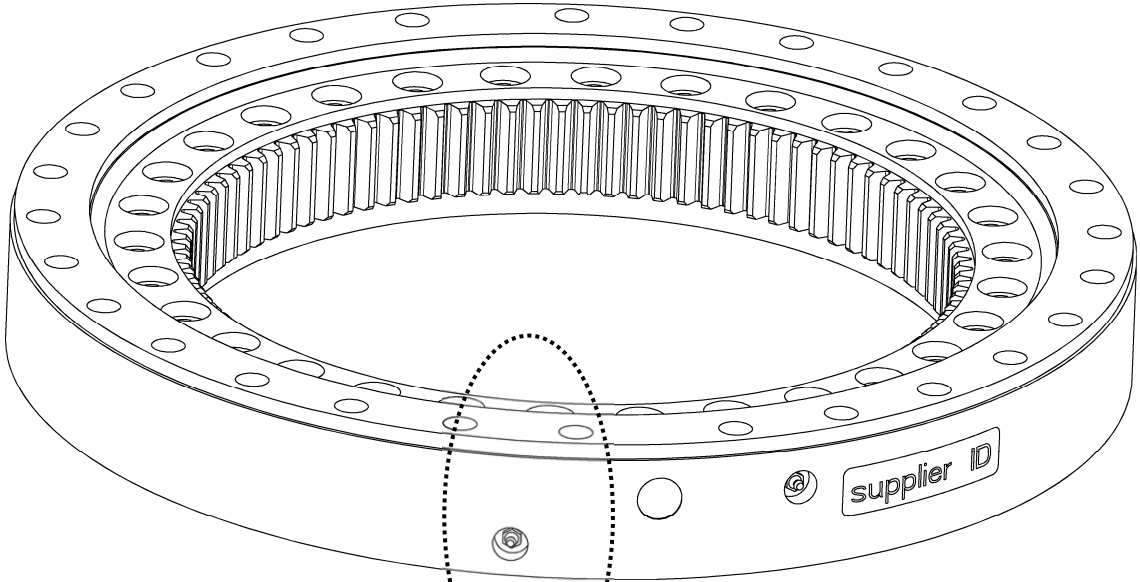


Sealset 504057

Multi Quick Processor	<i>Page</i>	18	<i>of</i>	24
	<i>Date</i>	August 2014		
	<i>Product type</i>	MQP-45-Y		
Check valve	<i>Number</i>	502117-01		

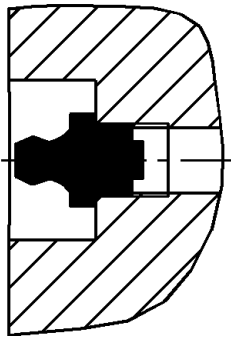


Multi Quick Processor	Page	19	of	24
	Date	August 2014		
	Product type	MQP-45-Y		
Slewing ring	Number	500591-01		

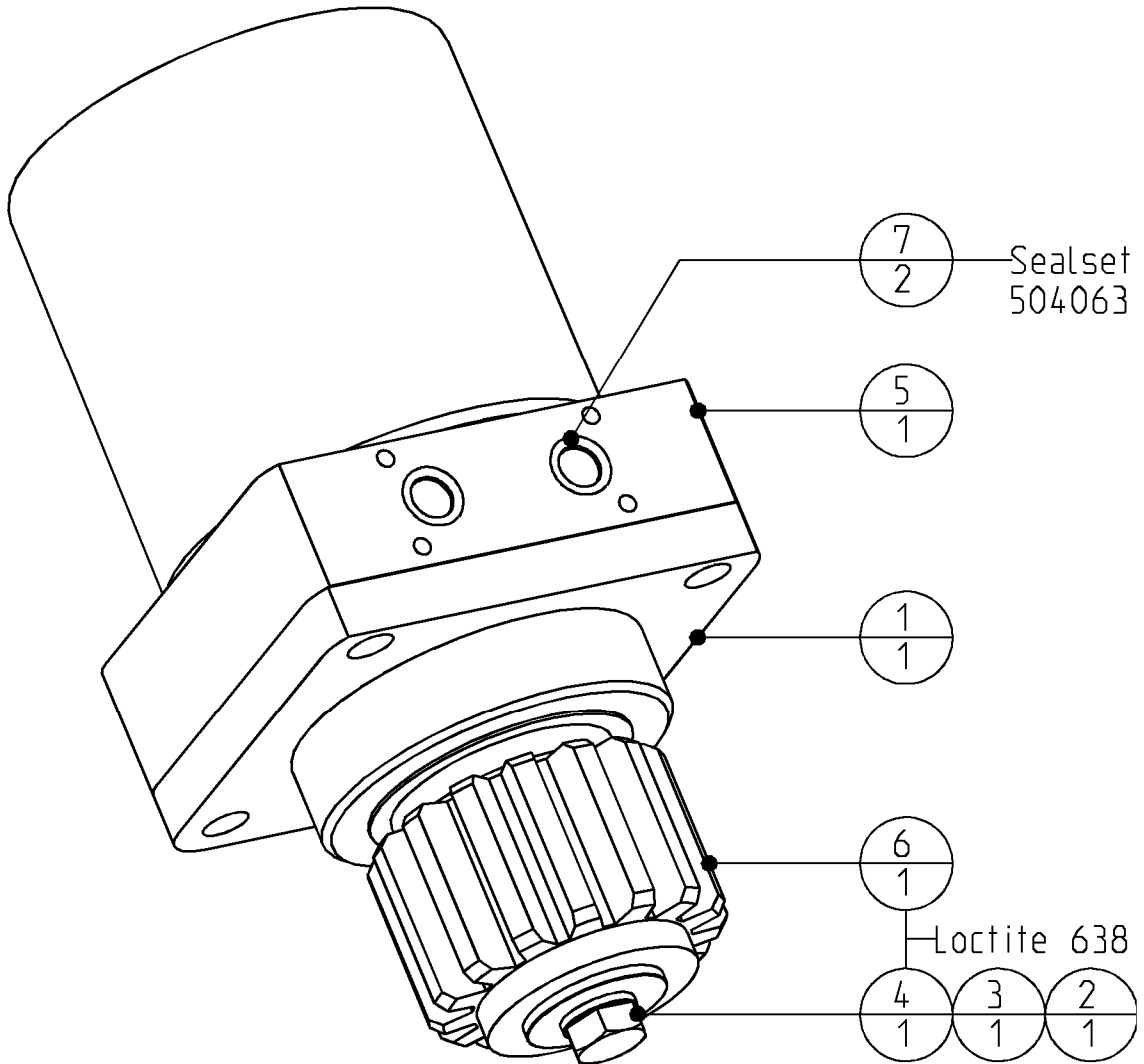


**2x seal 256060900
mount with Loctite 480**

**4x grease nipple
500560**



Multi Quick Processor	Page	20	of	24
	Date	August 2014		
	Product type	MQP-45-Y		
Hydraulic motor GP	Number	401201-01		

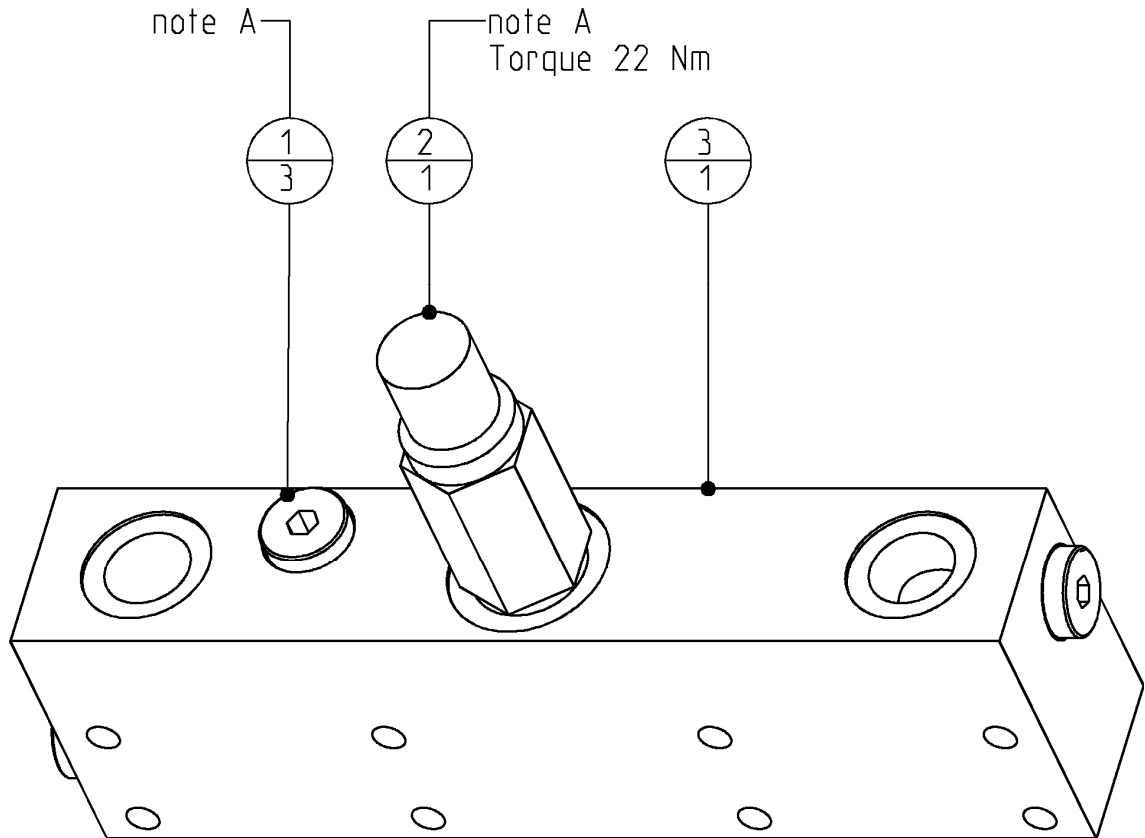


7	504070	O-ring	2
6	500851	Pinion	1
5	500763	Hydro-motor	1
4	500131	Bolts Hexagon	1
3	500068	Washer spring	1
2	500062	Washer car	1
1	400593	Motor-flange	1
POS	PARTNUMBER	PARTNAME	QT

Multi Quick Processor

Page	21	of	24
Date	August 2014		
Product type	MQP-45-Y		
Number	500758-03		

Valve GP



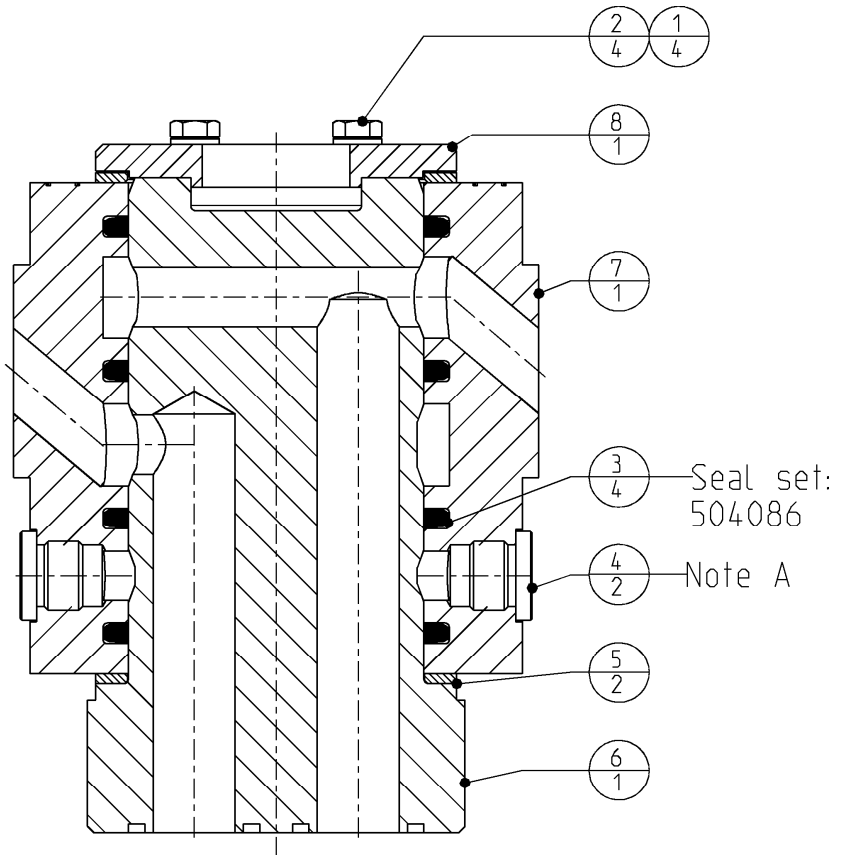
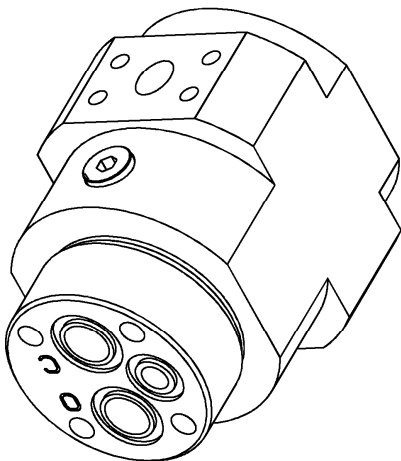
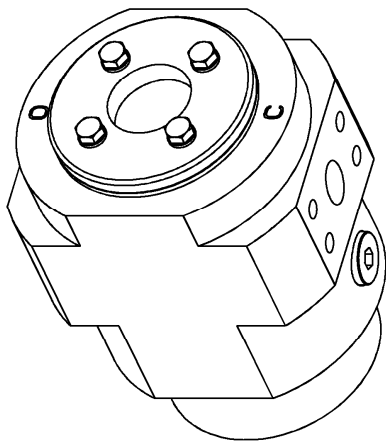
note A
Mount with Cyberbound TT62
according instructions at the end
of this partsbook.

3	500759	Baseplate	1
2	500757	cross-over relieve valve	1
1	500650	Blanking end	3
POS	PARTNUMBER	PARTNAME	QT

Multi Quick Processor

Page	22	of	24
Date	August 2014		
Product type	MQP-45-Y		
Number	502286-05		

Swivel GP



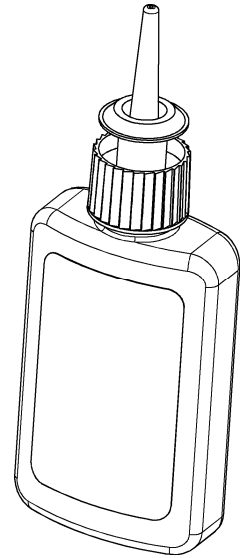
note A
Mount with Cyberbound TT62
according instructions at the end
of this partsbook.

8	502289	Cover	1
7	502288	Housing	1
6	502287	Stator	1
5	500832	Axial ring	2
4	500652	Blanking end	2
3	500630	Seal - Roto Glyd Ring	4
2	500105	Bolts Hexagon	4
1	500066	Washer spring	4
POS	PARTNUMBER	PARTNAME	QT

Multi Quick Processor	Page	23	of	24
	Date	August 2014		
	Product type	MQP-45-Y		
Additional parts	Number	n.a.		

Chemical lock

195050158	Cyberbond TT62 Pumpgel	1
506018	Loctite 480 Flacon 20 gr	1
506017	Loctite 638 Flacon 50 ml	1
506016	Loctite 270 Flacon 50 ml	1
PARTNUMBER	PARTNAME	QT



Multi Quick Processor	Page	24	of	24
	Date	August 2014		
	Product type	MQP-45-Y		
Instructions	Number	n.a.		

Mounting instructions for Cyberbound TT 62

This instruction shall guarantee that all hydraulic fittings and cartridges will be mounted and glued in correctly.

Procedure:

Clean and degrease thoroughly all components with a special cleaner for anaerobic adhesives (e.g. Loctite cleaner 7063) or acetone.

Apply on the outside thread only a bead of Cyberbond TT62 pump gel to approx. 2/3 of the girth of the second thread for fittings up to a diameter of 20mm or to the entire girth for fittings with a diameter larger than 20mm.



Cyberbound
TT 62



Clean from adhesive residues pressed out from the bore hole after fitting.

ATTENTION. The sealings shall be free of adhesive residues!

Tighten fittings with given fastening torques.

Standard torque values for bolts (when not indicated)

Thread size	Torque (Nm) for quality		
	8.8	10.9	12.9
M8	22,5	32,4	38,7
M10	45,0	63,0	75,6
M12	77,4	109,0	131,0
M16	194,0	270,0	324,0
M20	369,0	522,0	630,0
M24	639,0	900,0	1080,0
M27	945,0	1305,0	1575,0
M30	1260,0	1800,0	2160,0



DEMAREC AND KINSHOFER WORLDWIDE

Netherlands:

Demarec

Demolition and Recycling Equipment BV

Den Hoek 10

5845 EL St. Anthonis

Netherlands

TEL. +31 (0) 485 442300

FAX +31 (0) 485 442120

Email:

info@demarec.com

United Kingdom:

Kinshofer UK Ltd.

4 Milton Industrial Court,

Horsfield Way, Bredbury

Stockport, Cheshire, SK6 2TA

United Kingdom

TEL. +44 (0) 161 - 406 7046

FAX +44 (0) 161 - 406 7014

Email:

sales@kinshofer.co.uk

France:

Kinshofer France S.A.R.L.

B.P. 20100

67213 Obernai Cedex

France

TEL. +33 (0) 388 39 55 00

FAX +33 (0) 388 79 06 75

Email:

info@kinshofer.fr

Czech Republic:

Kinshofer CZ s.r.o.

Cs. Legji 568

37810 Ceske Velenice

Czech Republic

TEL. +420 384 – 795 110

FAX +420 384 – 795 120

Headquarters:

Germany:

Kinshofer GmbH

Hauptstrasse 76

83666 Waakirchen

Germany

TEL. +49 (0) 8021 – 88 99 0

FAX +49 (0) 8021 – 88 99 37

Email:

info@kinshofer.com

Finland:

Kinshofer Aponox Oy

Terminaalitie 10

13430 Hämeenlinna

Finland

TEL. +358 (0)75 7540 200

FAX +358 (0)75 7540 210

Beijing:

Darda Kinshofer

Construction Machinery Co. Ltd.

Unit #306, Landmark Tower 2

8 Dongsanhuan Road

Beijing 100004

China

TEL. +86 (10) 6590 6422

FAX +86 (10) 6590 6423

Email:

info@darda.com.cn

sales-northamerica@kinshofer.com